

Эффективность света:

128 Lumen/Watt

Качество света:

CRI: 83,5

Цветовая температура:

4171 K

Поток: 23645 lm

Интенс.: 7840 cd

Мощн.: 185 W

КПД: 0,96

4 PLANES



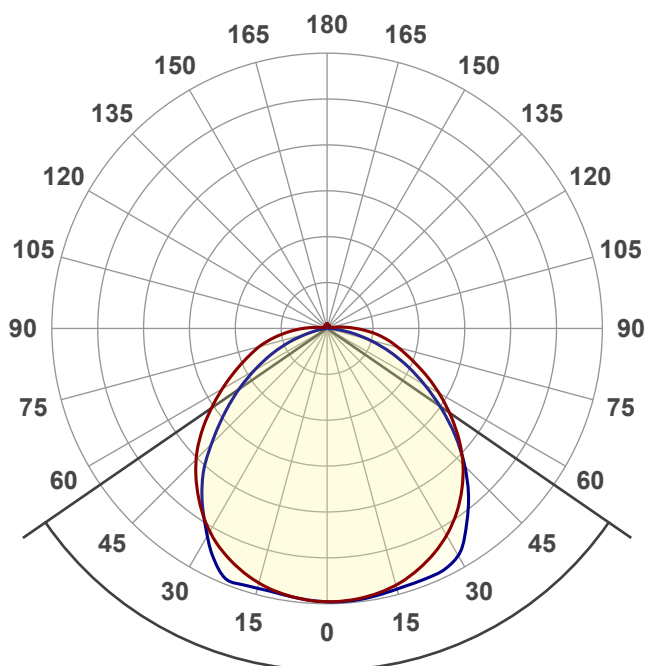
Название продукта:

ViLED CC

T1-Y-H-192-716.100.154-4-0-67

Дата и время:

25.01.2018 13:40:24



Угол пучка

110,9°

Цвет

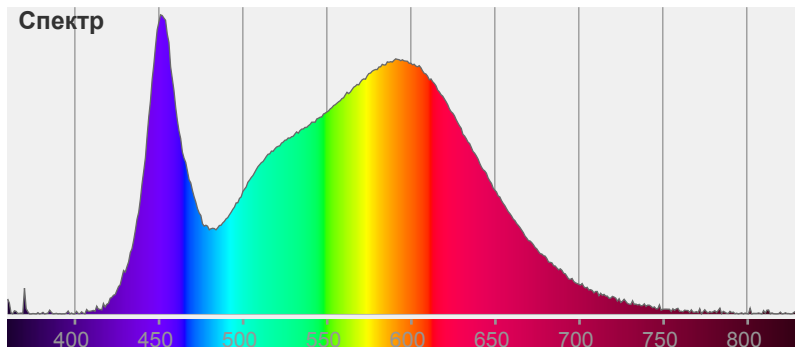


CIE1931

x: 0,372

y: 0,367

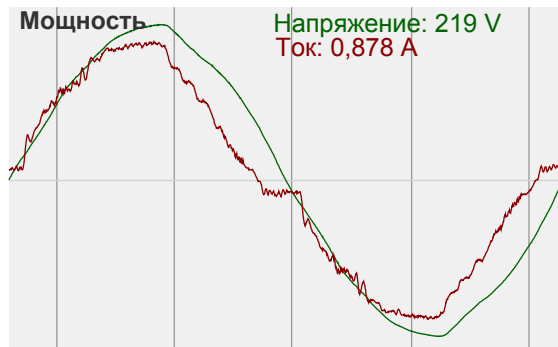
Спектр

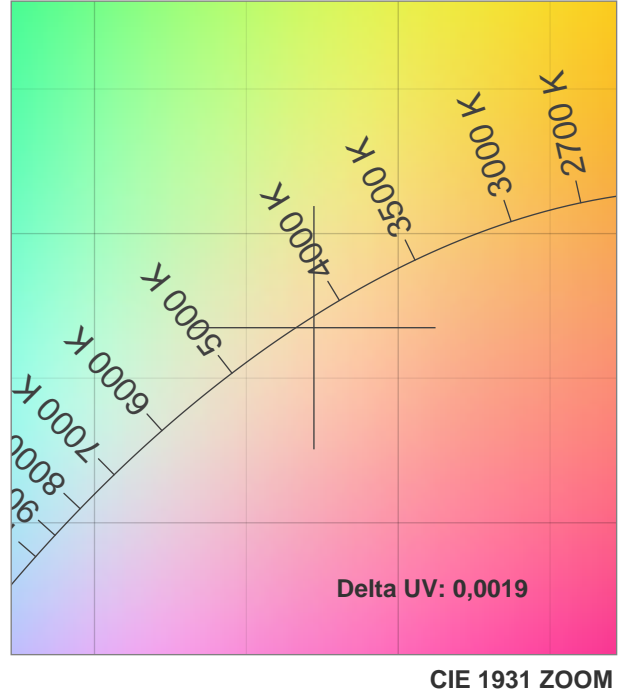
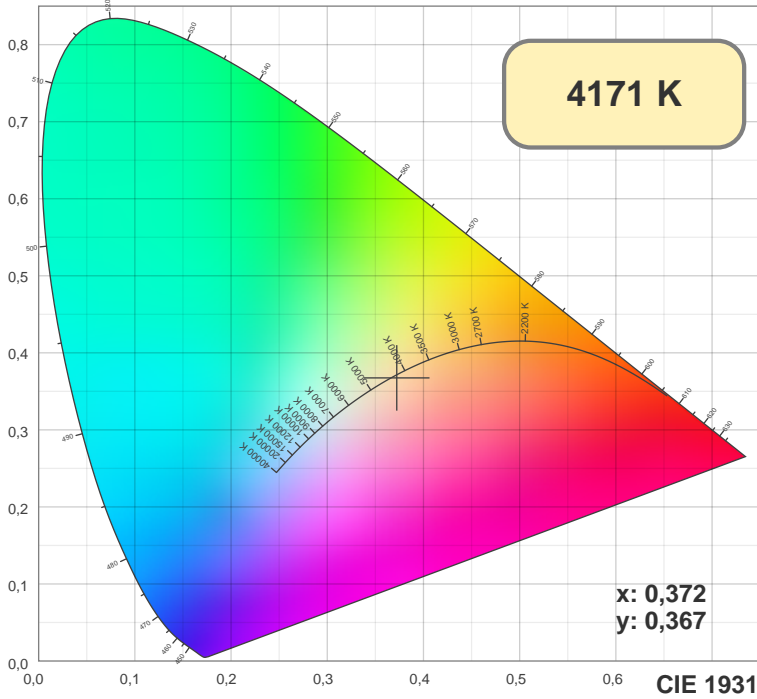


Мощность

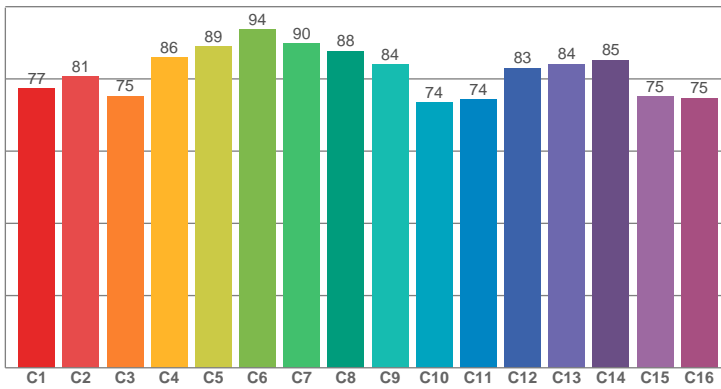
Напряжение: 219 V

Ток: 0,878 A

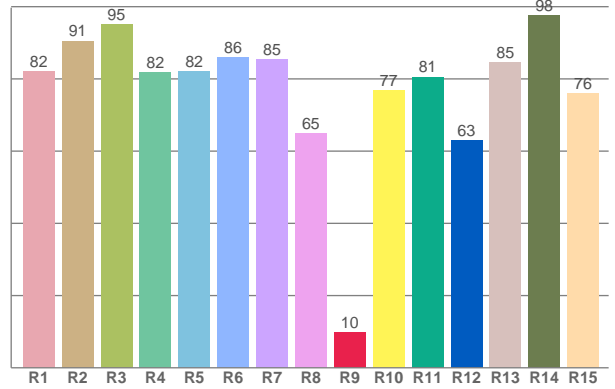




TM30: 81,8



CRI: 83,5 (R1-R8)



CRI R values, only R1-R8 are used to calculate final CRI value

R1	R2	R3	R4	R5	R6	R7	R8	R9	R10	R11	R12	R13	R14	R15
82,14	90,53	95,05	81,77	82,11	85,87	85,40	64,89	9,70	76,77	80,55	62,89	84,53	97,66	76,06

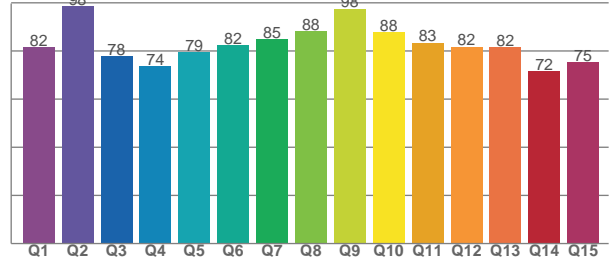
TM30 C values, 16 binned values out of total of 99 C values

C1	C2	C3	C4	C5	C6	C7	C8	C9	C10	C11	C12	C13	C14	C15	C16
77,35	80,78	75,26	85,97	88,92	93,78	89,90	87,77	83,98	73,53	74,24	83,02	84,16	85,25	75,08	74,76

CQS Q values

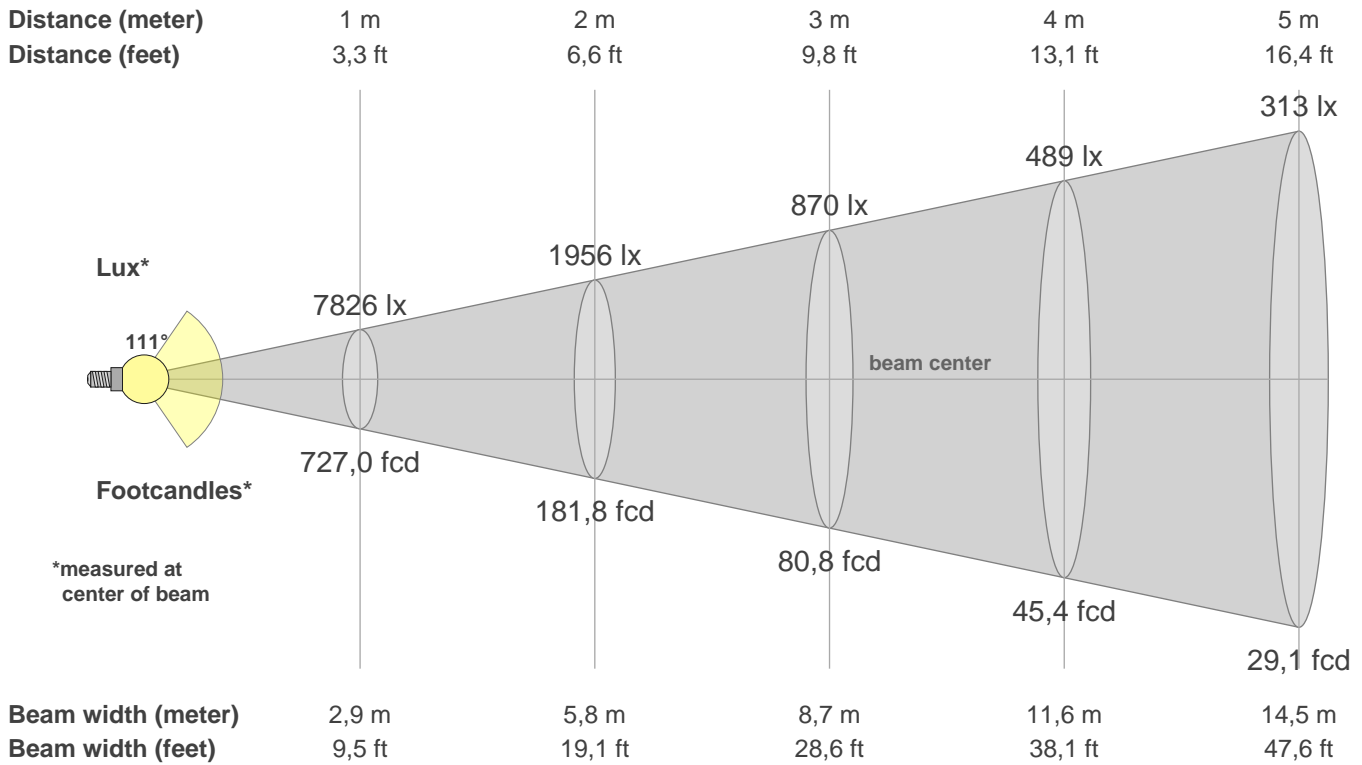
Q1	Q2	Q3	Q4	Q5	Q6	Q7	Q8	Q9	Q10	Q11	Q12	Q13	Q14	Q15
81,58	98,47	77,95	73,71	79,49	82,35	84,89	88,33	97,59	87,96	83,48	81,77	81,58	71,51	75,20

CQS: 81,5



Color parameters

CCT	CRI	CRI R9	TM30 Rf	TM30 Rg	CQS	x	y	u	v	Duv
4171 K	83,5	9,7	81,8	95,2	81,5	0,4	0,4	0,2	0,3	0,0019



Intensities in 0° c-plane

0°	5°	10°	15°	20°	25°	30°	35°	40°	45°	50°	55°	60°	65°	70°	75°	80°	85°	90°	95°
7826	7808	7737	7611	7412	7158	6844	6462	6010	5506	4931	4312	3702	3111	2565	2112	1705	1279	837	464
100%	100%	99%	97%	95%	91%	87%	83%	77%	70%	63%	55%	47%	40%	33%	27%	22%	16%	11%	6%

Intensities in 90° c-plane

0°	5°	10°	15°	20°	25°	30°	35°	40°	45°	50°	55°	60°	65°	70°	75°	80°	85°	90°	95°
7826	7830	7790	7735	7711	7686	7490	6944	6303	5579	4801	3999	3227	2527	1863	1241	692	272	87	62
100%	100%	100%	99%	99%	98%	96%	89%	81%	71%	61%	51%	41%	32%	24%	16%	9%	3%	1%	1%

Intensities in 180° c-plane

0°	5°	10°	15°	20°	25°	30°	35°	40°	45°	50°	55°	60°	65°	70°	75°	80°	85°	90°	95°
7826	7787	7693	7544	7328	7054	6712	6291	5817	5301	4715	4082	3477	2921	2433	2012	1560	1104	696	348
100%	100%	98%	96%	94%	90%	86%	80%	74%	68%	60%	52%	44%	37%	31%	26%	20%	14%	9%	4%

Intensities in 270° c-plane

0°	5°	10°	15°	20°	25°	30°	35°	40°	45°	50°	55°	60°	65°	70°	75°	80°	85°	90°	95°
7826	7786	7729	7713	7732	7458	6864	6219	5529	4695	3880	3132	2418	1775	1170	611	239	91	76	70
100%	99%	99%	99%	99%	95%	88%	79%	71%	60%	50%	40%	31%	23%	15%	8%	3%	1%	1%	1%

Beam angle 50%	Field angle 10%	Cutoff angle 2,5%	Intensity ratio in 120° cone	Intensity ratio in 90° cone
110,9°	165,7°	185,0°	76,5%	52,9%