

# СЕВЕРО-ЗАПАДНАЯ СВЕТОТЕХНИЧЕСКАЯ ЛАБОРАТОРИЯ

Эффективность света:

**90 Lumen/Watt**

Качество света:

**CRI: 87,4**

Цветовая температура:

**4508 K**

Поток: 2826 lm

Интенс.: 285 cd

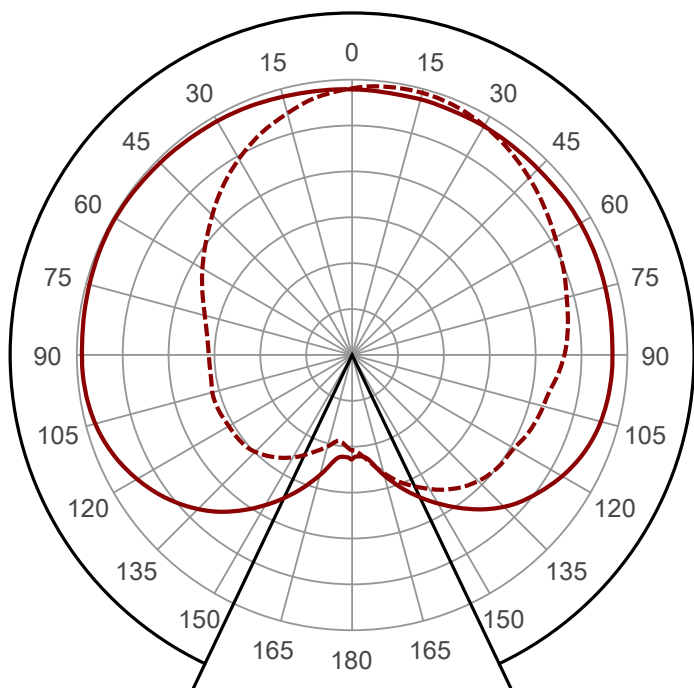
Мощн.: 31,4 W

КПД: 0,90



Угол пучка

**309,1°** (2 C-PLANES)



Название продукта:

СС

07-K-O-32-300.300.300-4-0-54

Дата и время:

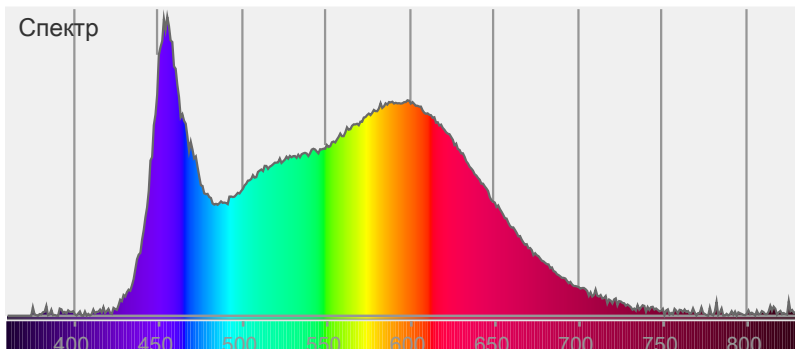
28.03.2016 11:11:03

Цвет



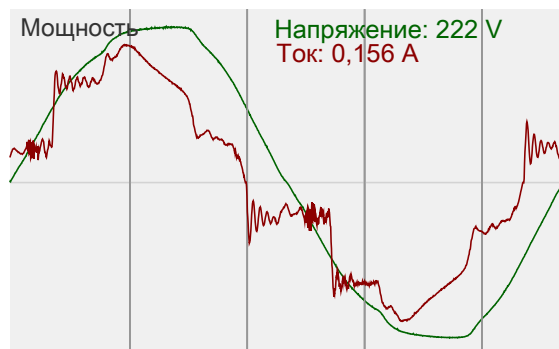
CIE1931  
x: 0,360  
y: 0,360

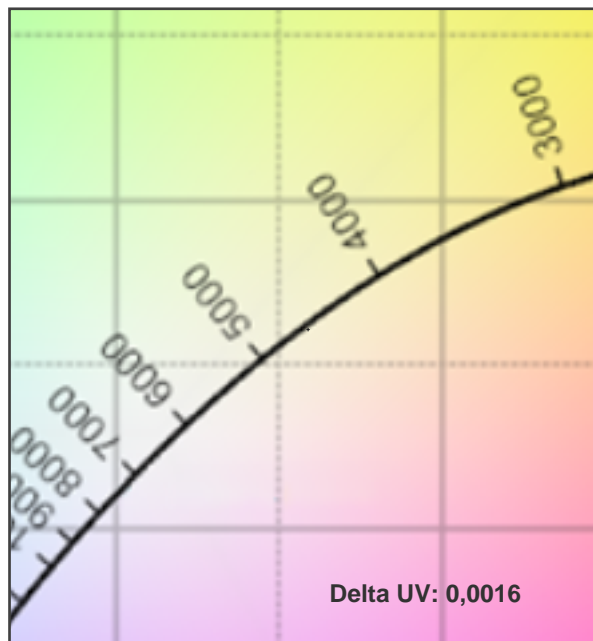
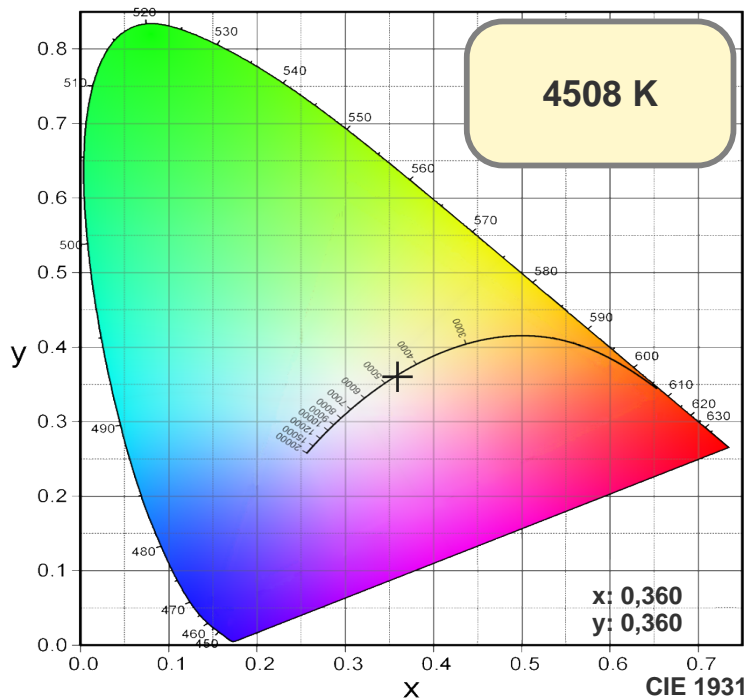
Спектр



Мощность

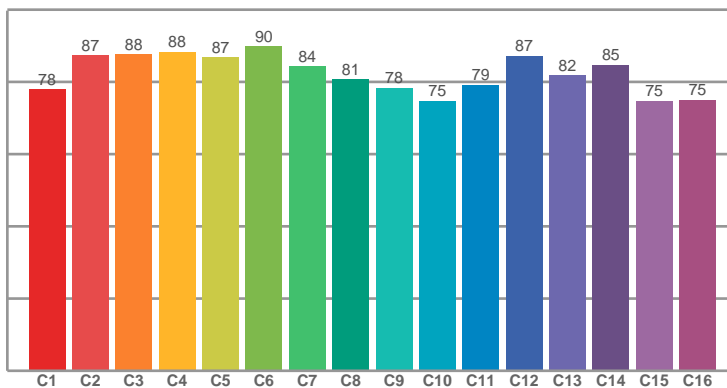
Напряжение: 222 V  
Ток: 0,156 A



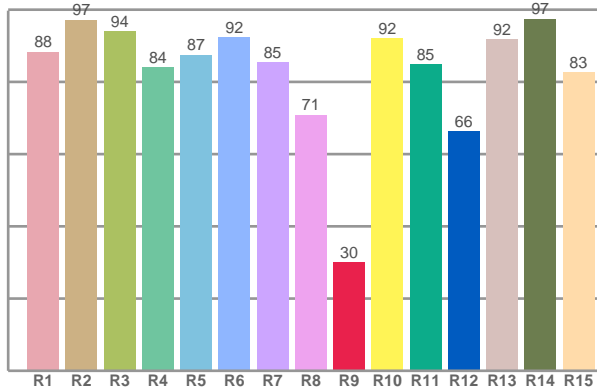


COLOR

TM30: 82,6



CRI: 87,4 (R1-R8)



CRI R values, only R1-R8 are used to calculate final CRI value

R1	R2	R3	R4	R5	R6	R7	R8	R9	R10	R11	R12	R13	R14	R15
88,32	97,15	94,07	83,95	87,43	92,34	85,33	70,85	29,99	92,04	84,89	66,36	91,77	97,45	82,65

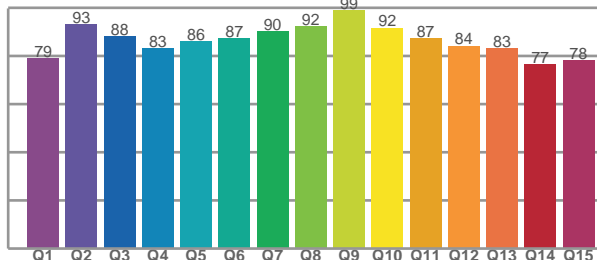
TM30 C values, 16 binned values out of total of 99 C values

C1	C2	C3	C4	C5	C6	C7	C8	C9	C10	C11	C12	C13	C14	C15	C16
77,89	87,31	87,68	88,29	86,87	89,78	84,30	80,74	78,36	74,71	79,16	87,17	81,83	84,68	74,70	75,02

CQS Q values

Q1	Q2	Q3	Q4	Q5	Q6	Q7	Q8	Q9	Q10	Q11	Q12	Q13	Q14	Q15
79,01	93,38	88,24	83,35	86,15	87,36	90,17	92,43	98,92	91,73	87,30	84,26	83,13	76,58	78,14

CQS: 85,4



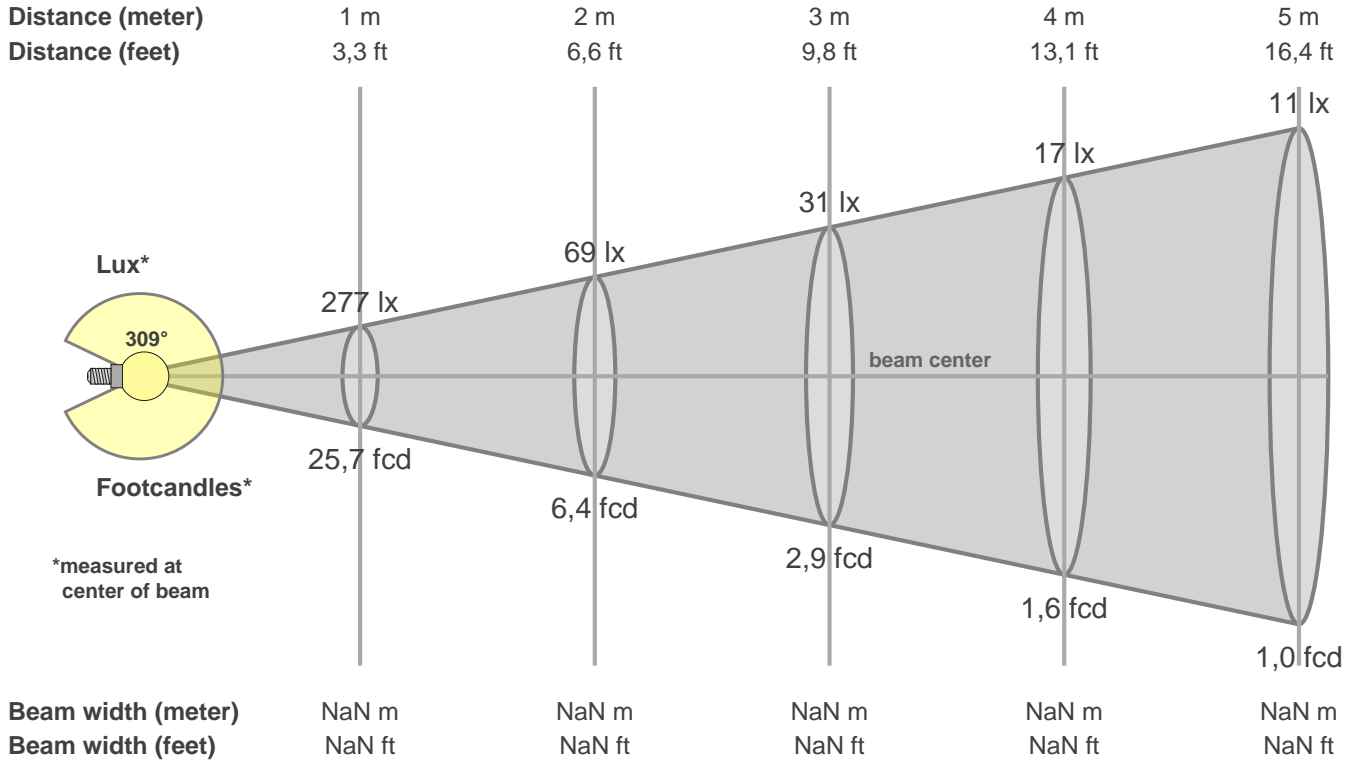
## Color parameters

CCT	CRI	CRI R9	TM30 Rf	TM30 Rg	CQS	x	y	u	v	Duv
4508 K	87,4	30,0	82,6	92,9	85,4	0,4	0,4	0,2	0,3	0,0016

# СЕВЕРО-ЗАПАДНАЯ СВЕТОТЕХНИЧЕСКАЯ ЛАБОРАТОРИЯ

## Beam details

3 of 3



### Intensities in 0° c-plane

0°	9°	18°	27°	36°	45°	54°	63°	72°	81°	90°	99°	108°	117°	126°	135°	144°	153°	162°	171°
277	277	279	281	282	283	284	285	284	282	281	280	274	263	248	227	200	170	140	111
100%	100%	101%	101%	102%	102%	103%	103%	102%	102%	102%	101%	99%	95%	89%	82%	72%	62%	50%	40%

### Intensities in 90° c-plane

0°	9°	18°	27°	36°	45°	54°	63°	72°	81°	90°	99°	108°	117°	126°	135°	144°	153°	162°	171°
277	270	256	241	224	206	190	175	163	153	149	149	151	149	147	142	132	118	103	91
100%	97%	92%	87%	81%	74%	68%	63%	59%	55%	54%	54%	54%	54%	53%	51%	48%	43%	37%	33%

### Intensities in 180° c-plane

0°	9°	18°	27°	36°	45°	54°	63°	72°	81°	90°	99°	108°	117°	126°	135°	144°	153°	162°	171°
277	275	275	275	274	274	275	274	273	272	271	270	266	257	242	223	197	169	140	111
100%	99%	99%	99%	99%	99%	99%	99%	99%	98%	98%	98%	96%	93%	87%	81%	71%	61%	51%	40%

### Intensities in 270° c-plane

0°	9°	18°	27°	36°	45°	54°	63°	72°	81°	90°	99°	108°	117°	126°	135°	144°	153°	162°	171°
277	282	282	278	270	261	251	242	234	228	221	211	205	198	192	186	173	155	135	113
100%	102%	102%	100%	98%	94%	91%	87%	84%	82%	80%	76%	74%	71%	69%	67%	62%	56%	49%	41%

Beam angle 50%	Field angle 10%	Cutoff angle 2,5%	Intensity ratio in 120° cone	Intensity ratio in 90° cone
309,1°	360,0°	360,0°	28,9%	17,3%