

СЕВЕРО-ЗАПАДНАЯ СВЕТОТЕХНИЧЕСКАЯ ЛАБОРАТОРИЯ

Эффективность света:

121 Lumen/Watt

Качество света:

CRI: 82,9

Цветовая температура:

4168 K

Поток: 7718 lm

Интенс.: 2490 cd

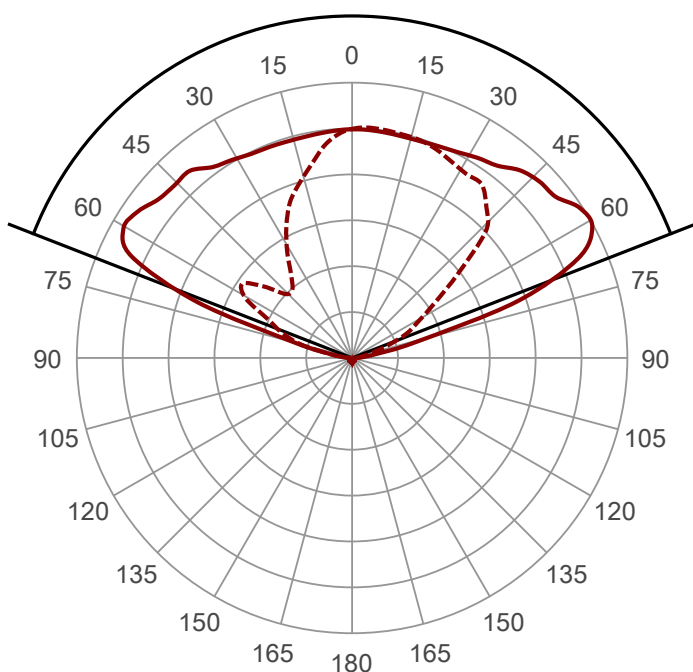
Мощн.: 63,6 W

КПД: 0,97



Угол пучка

137,4° (4 PLANES)
8 C-Planes



Название продукта:

СС

M2-K-H-64-350.100.130-4-0-67

Дата и время:

03.10.2016 10:38:51

Цвет

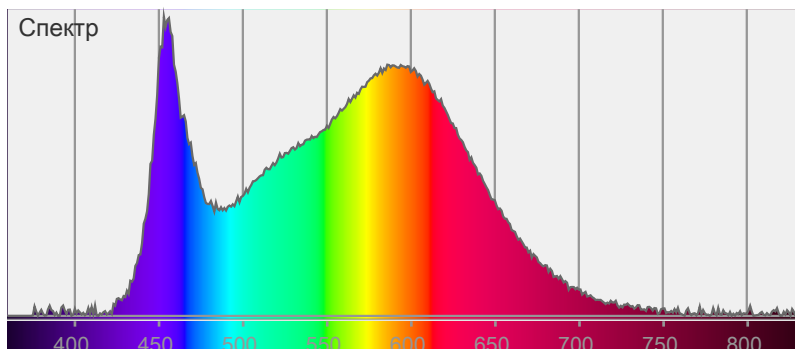


CIE1931

x: 0,373

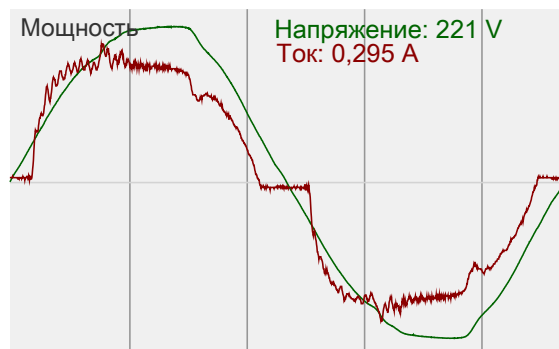
y: 0,369

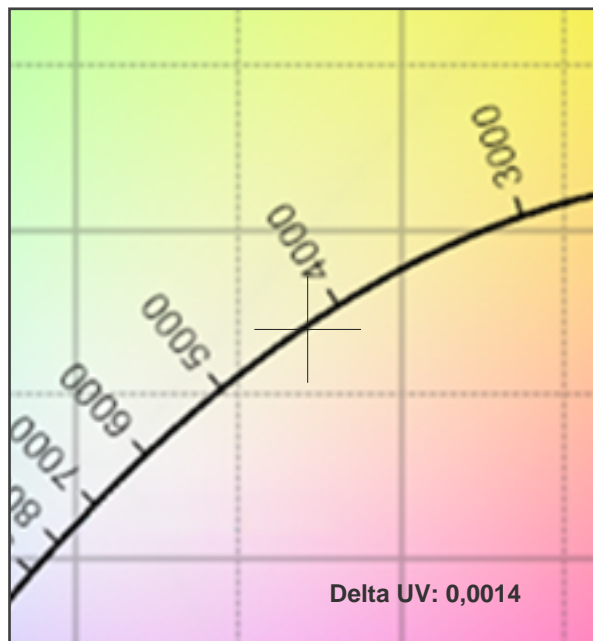
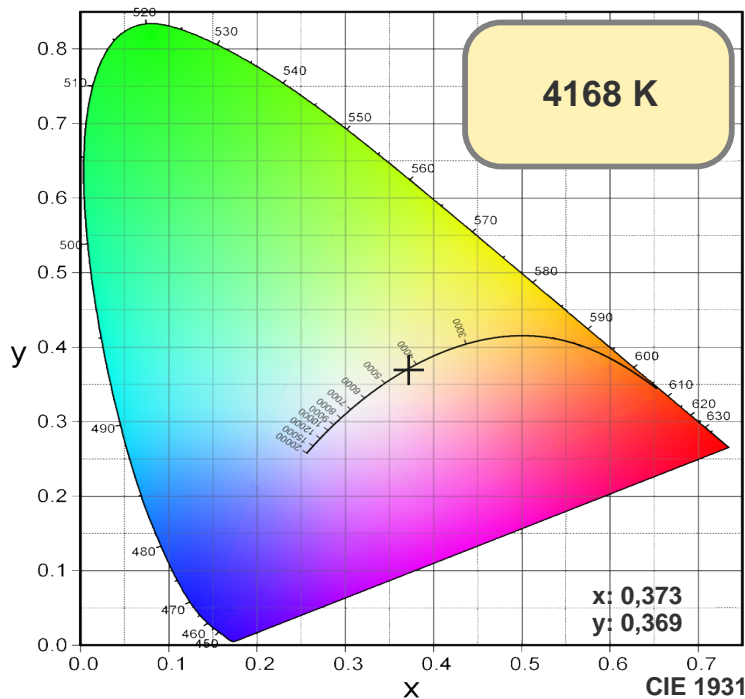
Спектр



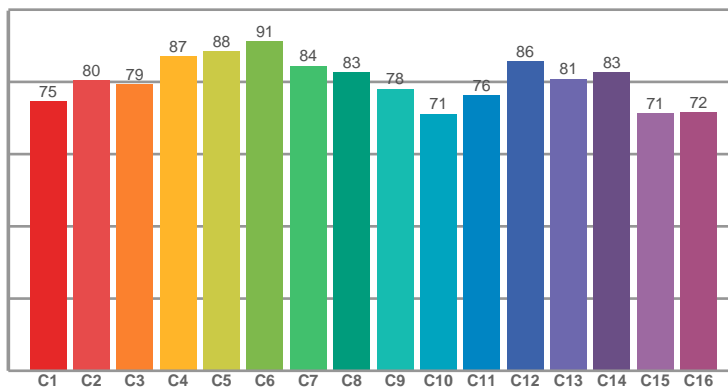
Мощность

Напряжение: 221 V
Ток: 0,295 A

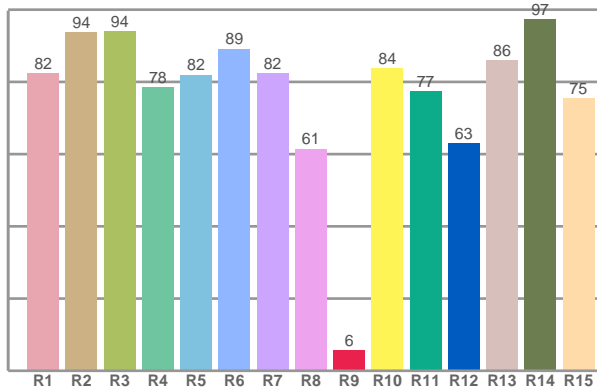




TM30: 80,3



CRI: 82,9 (R1-R8)



CRI R values, only R1-R8 are used to calculate final CRI value

R1	R2	R3	R4	R5	R6	R7	R8	R9	R10	R11	R12	R13	R14	R15
82,26	93,62	93,90	78,50	81,92	89,16	82,39	61,44	5,55	83,73	77,33	62,92	85,93	97,39	75,37

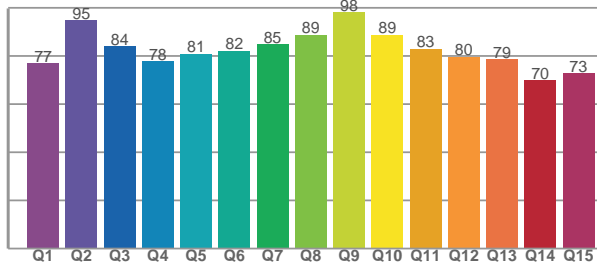
TM30 C values, 16 binned values out of total of 99 C values

C1	C2	C3	C4	C5	C6	C7	C8	C9	C10	C11	C12	C13	C14	C15	C16
74,51	80,36	79,24	87,14	88,49	91,15	84,44	82,66	78,04	71,12	76,17	85,74	80,80	82,58	71,29	71,61

CQS Q values

Q1	Q2	Q3	Q4	Q5	Q6	Q7	Q8	Q9	Q10	Q11	Q12	Q13	Q14	Q15
76,96	95,04	83,98	77,75	80,93	82,21	84,88	88,89	98,12	88,84	83,05	79,73	78,73	69,85	72,98

CQS: 81,3



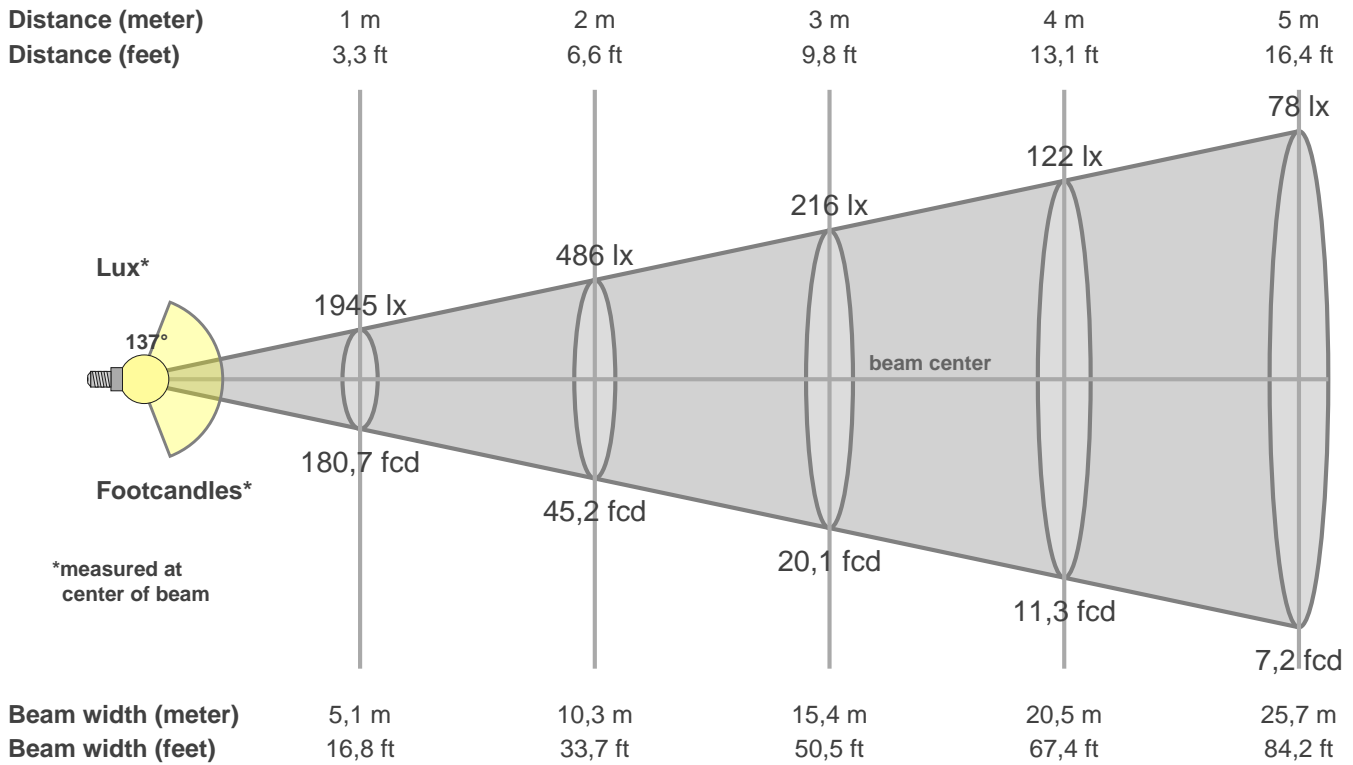
Color parameters

CCT	CRI	CRI R9	TM30 Rf	TM30 Rg	CQS	x	y	u	v	Duv
4168 K	82,9	5,6	80,3	91,9	81,3	0,4	0,4	0,2	0,3	0,0014

СЕВЕРО-ЗАПАДНАЯ СВЕТОТЕХНИЧЕСКАЯ ЛАБОРАТОРИЯ

Beam details

3 of 3



Intensities in 0° c-plane

0°	5°	10°	15°	20°	25°	30°	35°	40°	45°	50°	55°	60°	65°	70°	75°	80°	85°	90°	95°
1945	1938	1928	1924	1927	1935	1963	2002	2090	2108	2128	2199	2235	2074	1421	512	184	75	28	23
100%	100%	99%	99%	99%	99%	101%	103%	107%	108%	109%	113%	115%	107%	73%	26%	9%	4%	1%	1%

Intensities in 90° c-plane

0°	5°	10°	15°	20°	25°	30°	35°	40°	45°	50°	55°	60°	65°	70°	75°	80°	85°	90°	95°
1945	1874	1742	1601	1472	1309	1117	926	799	782	930	1101	1054	809	643	458	198	64	18	20
100%	96%	90%	82%	76%	67%	57%	48%	41%	40%	48%	57%	54%	42%	33%	24%	10%	3%	1%	1%

Intensities in 180° c-plane

0°	5°	10°	15°	20°	25°	30°	35°	40°	45°	50°	55°	60°	65°	70°	75°	80°	85°	90°	95°
1945	1944	1937	1934	1941	1959	1993	2034	2108	2174	2204	2286	2326	2159	1622	748	266	108	46	31
100%	100%	100%	99%	100%	101%	102%	105%	108%	112%	113%	118%	120%	111%	83%	38%	14%	6%	2%	2%

Intensities in 270° c-plane

0°	5°	10°	15°	20°	25°	30°	35°	40°	45°	50°	55°	60°	65°	70°	75°	80°	85°	90°	95°
1945	1963	1957	1947	1927	1890	1855	1844	1763	1617	1278	931	693	534	351	192	101	52	24	19
100%	101%	101%	100%	99%	97%	95%	95%	91%	83%	66%	48%	36%	27%	18%	10%	5%	3%	1%	1%

Beam angle 50%	Field angle 10%	Cutoff angle 2,5%	Intensity ratio in 120° cone	Intensity ratio in 90° cone
137,4°	163,2°	177,5°	68,4%	42,5%