

СЕВЕРО-ЗАПАДНАЯ СВЕТОТЕХНИЧЕСКАЯ ЛАБОРАТОРИЯ

Эффективность света:

118 Lumen/Watt

Качество света:

CRI: 86,4

Цветовая температура:

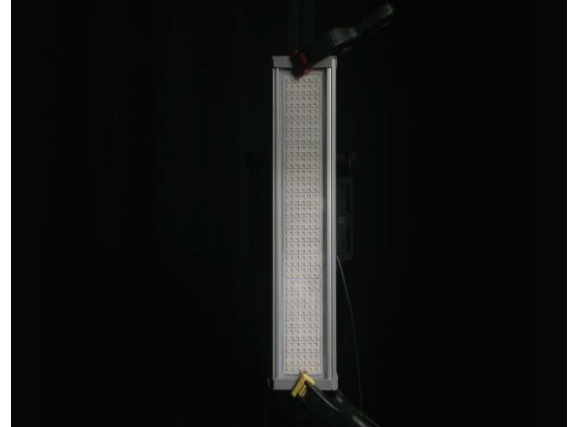
4113 K

Поток: 11570 lm

Интенс.: 4010 cd

Мощн.: 98,2 W

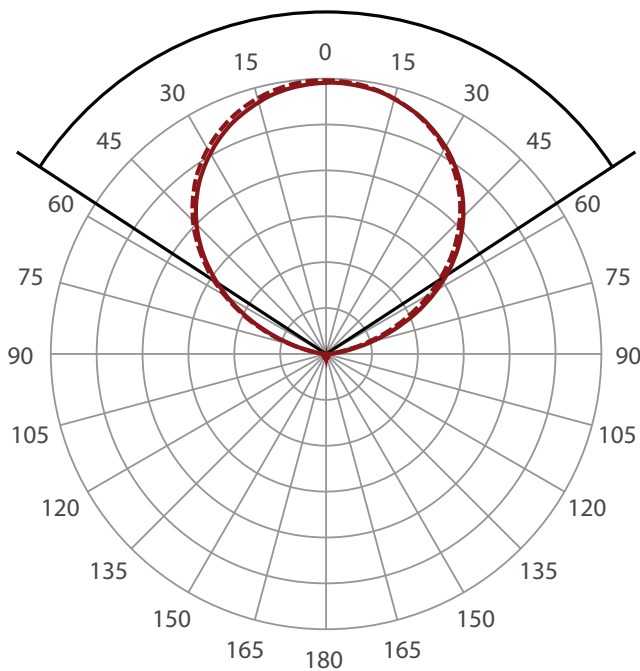
КПД: 0,92



Угол пучка

113,7°

(4 PLANES)
8 C-Planes

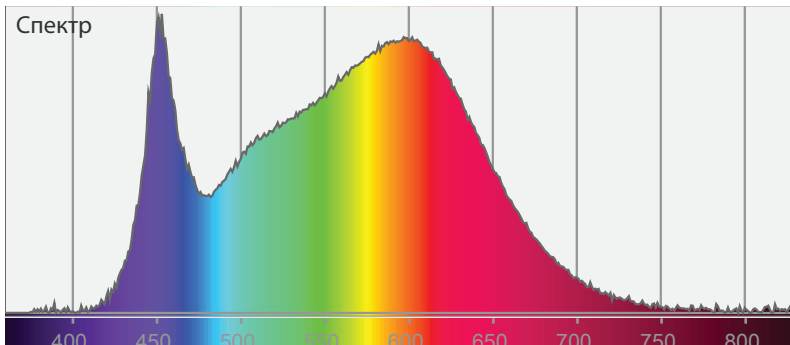


Цвет



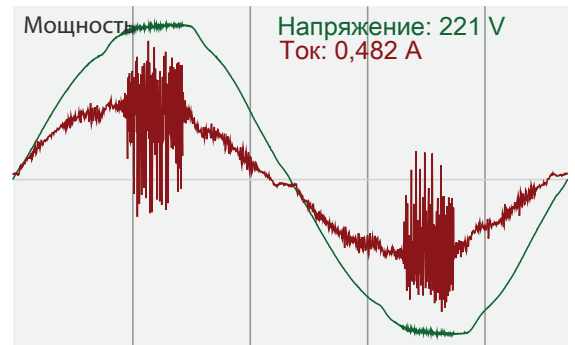
CIE1931
x: 0,376
y: 0,374

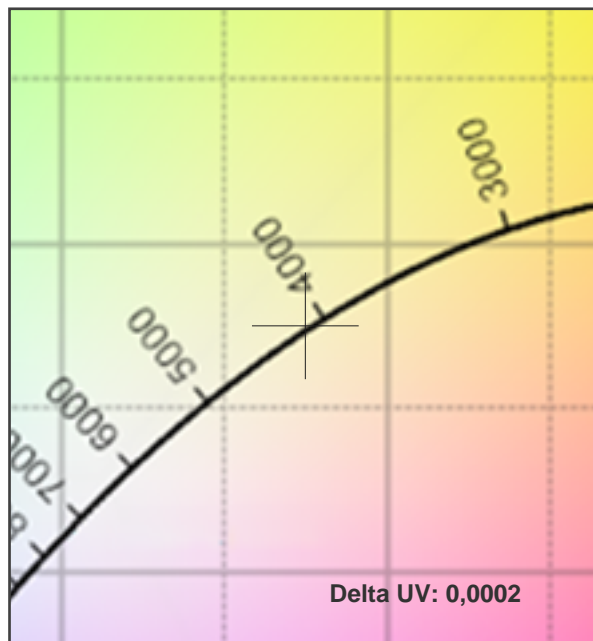
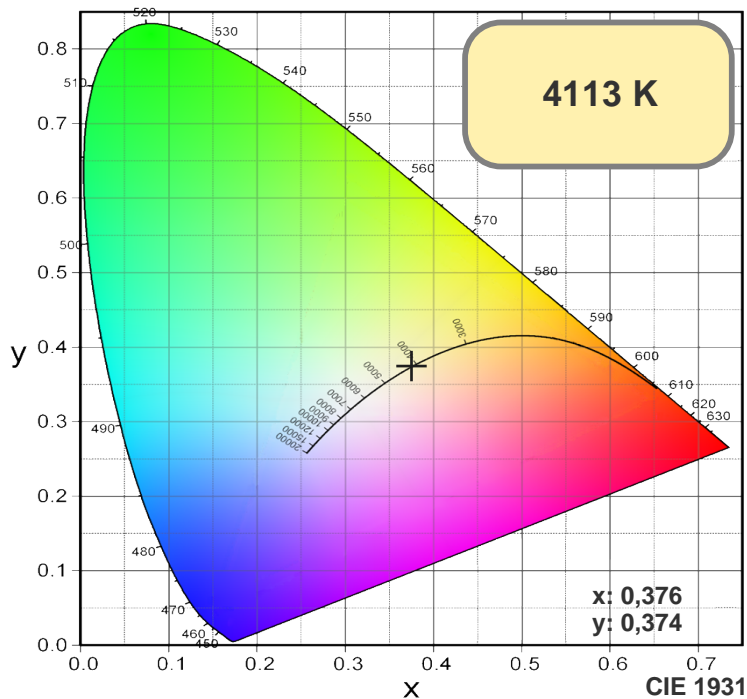
Спектр



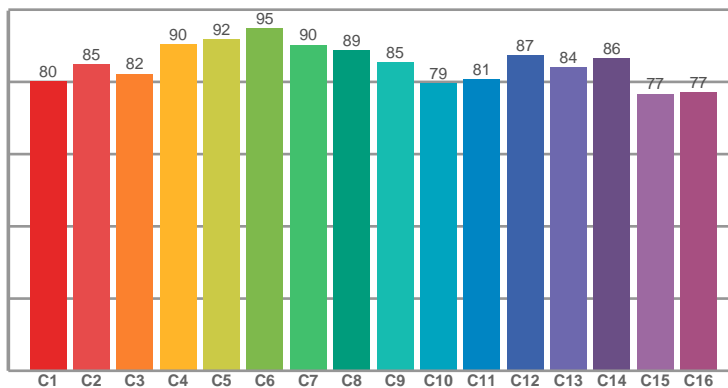
Мощность

Напряжение: 221 V
Ток: 0,482 A

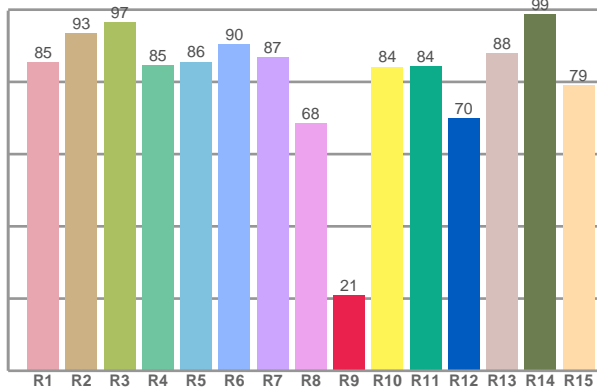




TM30: 84,9



CRI: 86,4 (R1-R8)



CRI R values, only R1-R8 are used to calculate final CRI value

R1	R2	R3	R4	R5	R6	R7	R8	R9	R10	R11	R12	R13	R14	R15
85,37	93,47	96,52	84,57	85,51	90,38	86,71	68,48	20,96	84,12	84,31	69,96	87,79	98,68	79,03

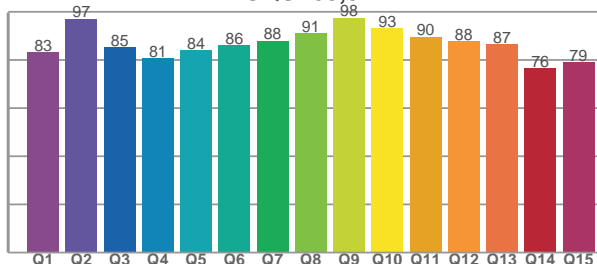
TM30 C values, 16 binned values out of total of 99 C values

C1	C2	C3	C4	C5	C6	C7	C8	C9	C10	C11	C12	C13	C14	C15	C16
80,05	84,83	82,23	90,30	91,72	94,79	90,27	88,80	85,39	79,49	80,74	87,26	84,03	86,44	76,69	77,13

CQS Q values

Q1	Q2	Q3	Q4	Q5	Q6	Q7	Q8	Q9	Q10	Q11	Q12	Q13	Q14	Q15
83,10	97,19	85,25	80,82	84,23	86,02	88,05	91,21	97,61	93,36	89,66	87,71	86,58	76,46	78,99

CQS: 85,8



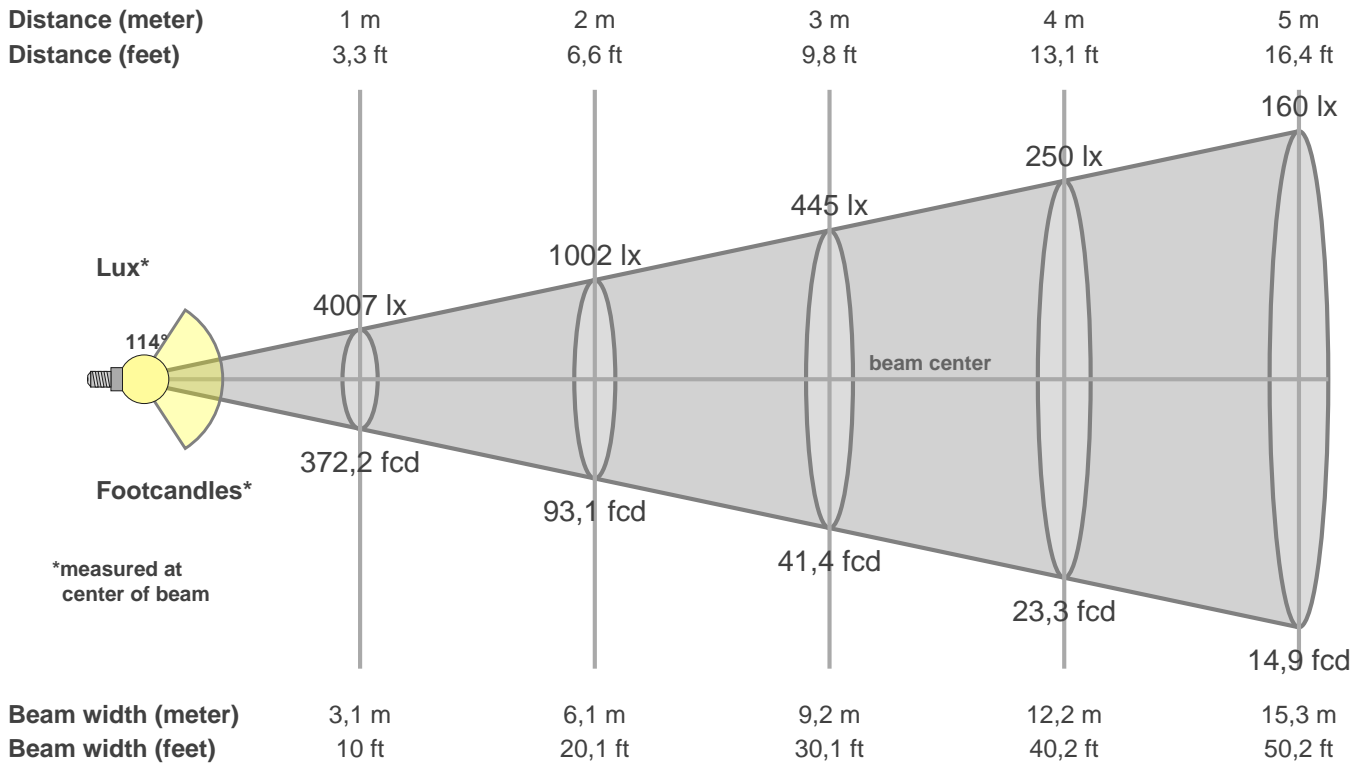
Color parameters

CCT	CRI	CRI R9	TM30 Rf	TM30 Rg	CQS	x	y	u	v	Duv
4113 K	86,4	21,0	84,9	94,8	85,8	0,4	0,4	0,2	0,3	0,0002

СЕВЕРО-ЗАПАДНАЯ СВЕТОТЕХНИЧЕСКАЯ ЛАБОРАТОРИЯ

Beam details

3 of 3



Intensities in 0° c-plane

0°	5°	10°	15°	20°	25°	30°	35°	40°	45°	50°	55°	60°	65°	70°	75°	80°	85°	90°	95°
4007	3983	3934	3849	3736	3594	3419	3216	2978	2706	2397	2054	1682	1287	883	512	220	69	30	35
100%	99%	98%	96%	93%	90%	85%	80%	74%	68%	60%	51%	42%	32%	22%	13%	6%	2%	1%	1%

Intensities in 90° c-plane

0°	5°	10°	15°	20°	25°	30°	35°	40°	45°	50°	55°	60°	65°	70°	75°	80°	85°	90°	95°
4007	3995	3950	3875	3771	3635	3466	3267	3027	2754	2440	2094	1715	1323	917	533	229	61	30	32
100%	100%	99%	97%	94%	91%	87%	82%	76%	69%	61%	52%	43%	33%	23%	13%	6%	2%	1%	1%

Intensities in 180° c-plane

0°	5°	10°	15°	20°	25°	30°	35°	40°	45°	50°	55°	60°	65°	70°	75°	80°	85°	90°	95°
4007	4001	3967	3899	3807	3684	3531	3345	3123	2866	2577	2250	1889	1503	1096	700	356	129	44	36
100%	100%	99%	97%	95%	92%	88%	83%	78%	72%	64%	56%	47%	38%	27%	17%	9%	3%	1%	1%

Intensities in 270° c-plane

0°	5°	10°	15°	20°	25°	30°	35°	40°	45°	50°	55°	60°	65°	70°	75°	80°	85°	90°	95°
4007	3990	3946	3871	3768	3634	3467	3269	3038	2767	2460	2117	1746	1355	963	586	275	96	42	38
100%	100%	98%	97%	94%	91%	87%	82%	76%	69%	61%	53%	44%	34%	24%	15%	7%	2%	1%	1%

Beam angle 50%	Field angle 10%	Cutoff angle 2,5%	Intensity ratio in 120° cone	Intensity ratio in 90° cone
113,7°	155,8°	169,8°	79,4%	53,9%