

СЕВЕРО-ЗАПАДНАЯ СВЕТОТЕХНИЧЕСКАЯ ЛАБОРАТОРИЯ

Эффективность света:

125 Lumen/Watt

Качество света:

CRI: 83,4

Цветовая температура:

4221 K

Поток: 12753 lm

Интенс.: 9446 cd

Мощн.: 102 W

КПД: 0,97



Название продукта:

СС

МЗ-У-Н-96-530.100.150-4-0-67

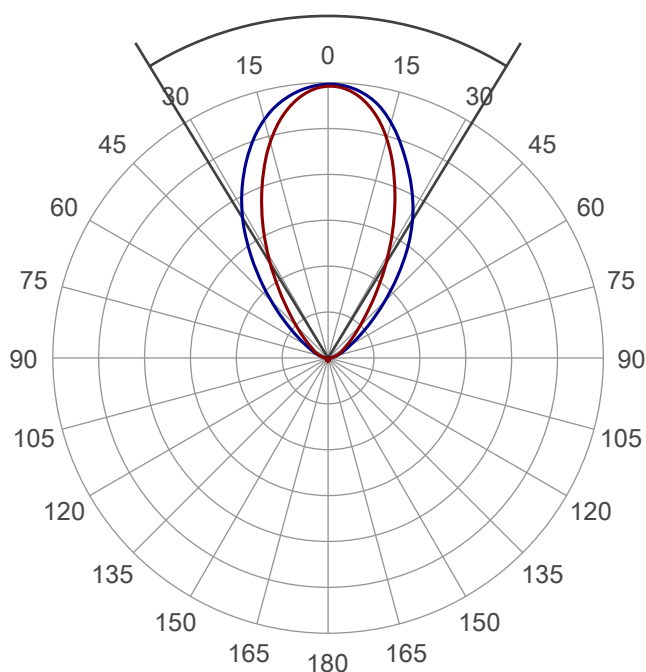
Дата и время:

14.02.2017 16:02:31

Угол пучка

62,9°

4 PLANES



Цвет

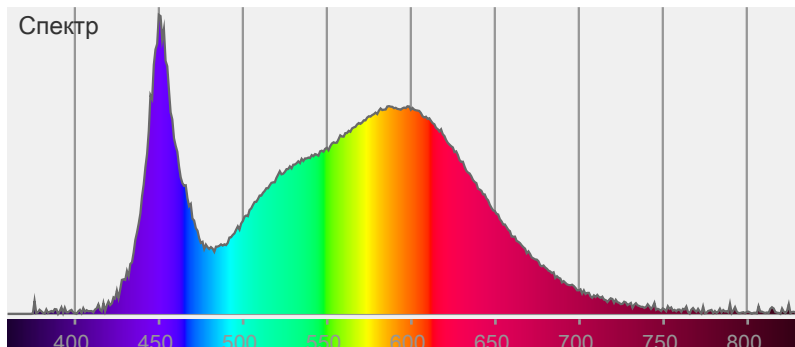


CIE1931

x: 0,369

y: 0,360

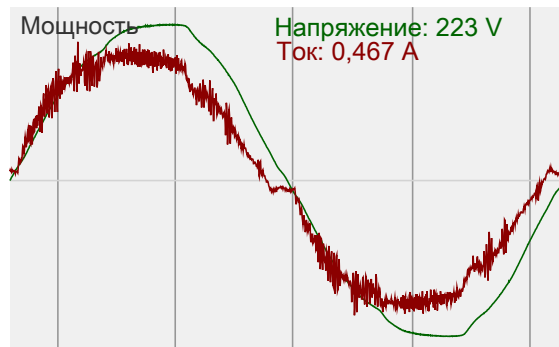
Спектр



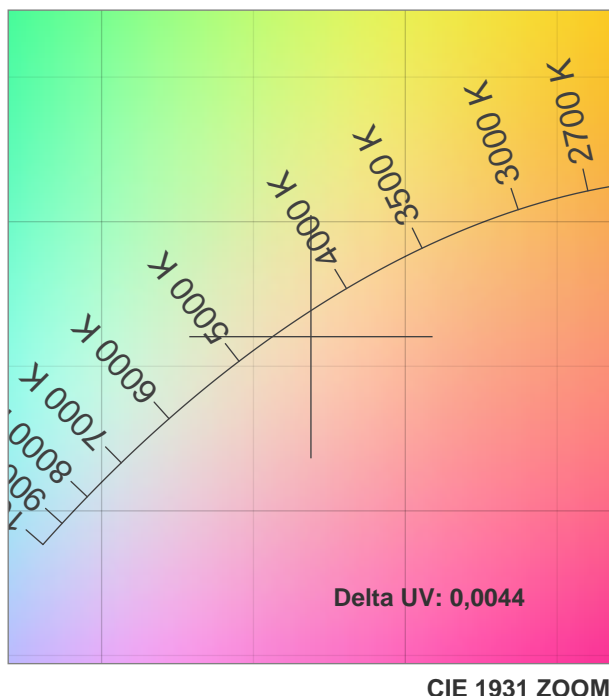
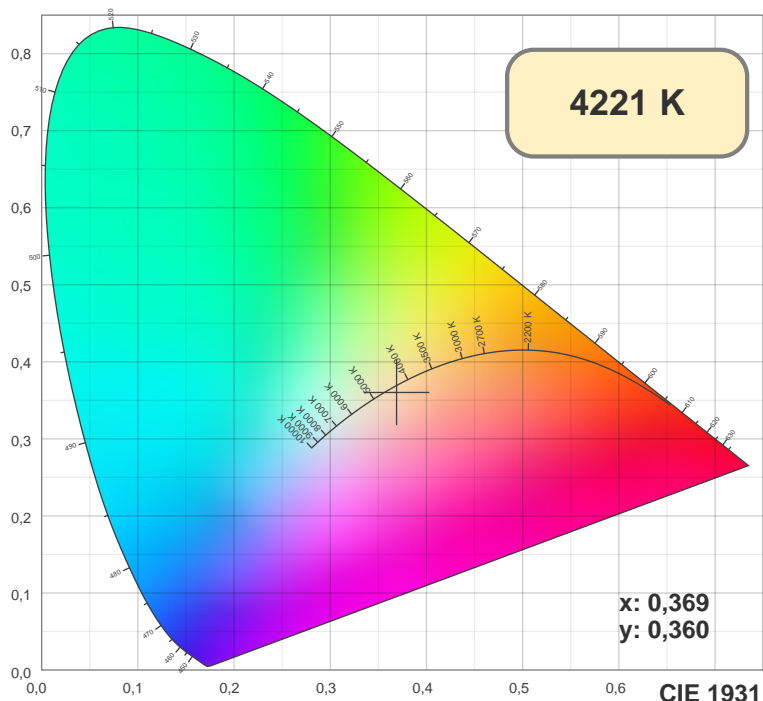
Мощность

Напряжение: 223 V

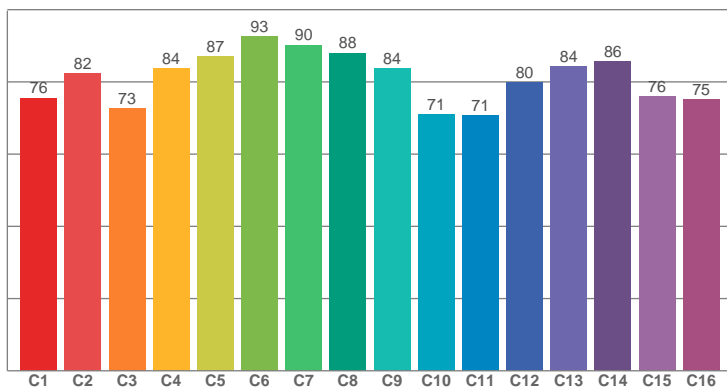
Ток: 0,467 A



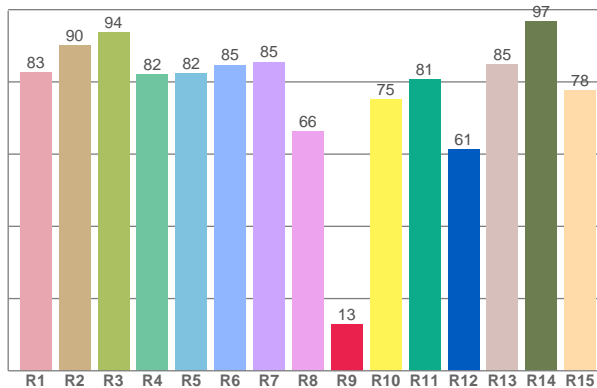
СЕВЕРО-ЗАПАДНАЯ СВЕТОТЕХНИЧЕСКАЯ ЛАБОРАТОРИЯ



TM30: 80,8



CRI: 83,4 (R1-R8)



CRI R values, only R1-R8 are used to calculate final CRI value

R1	R2	R3	R4	R5	R6	R7	R8	R9	R10	R11	R12	R13	R14	R15
82,65	90,10	93,72	82,12	82,40	84,68	85,50	66,29	12,78	75,15	80,59	61,31	84,74	96,70	77,65

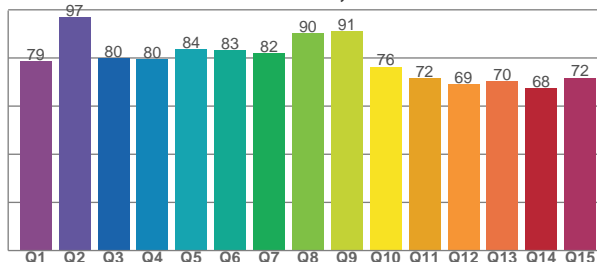
TM30 C values, 16 binned values out of total of 99 C values

C1	C2	C3	C4	C5	C6	C7	C8	C9	C10	C11	C12	C13	C14	C15	C16
75,53	82,30	72,68	83,75	87,01	92,64	90,22	88,02	83,83	70,90	70,65	79,95	84,38	85,62	75,93	75,09

CQS Q values

Q1	Q2	Q3	Q4	Q5	Q6	Q7	Q8	Q9	Q10	Q11	Q12	Q13	Q14	Q15
78,56	96,90	79,96	79,61	83,80	83,25	81,92	90,33	91,25	76,37	71,72	69,05	70,43	67,61	71,80

CQS: 77,8



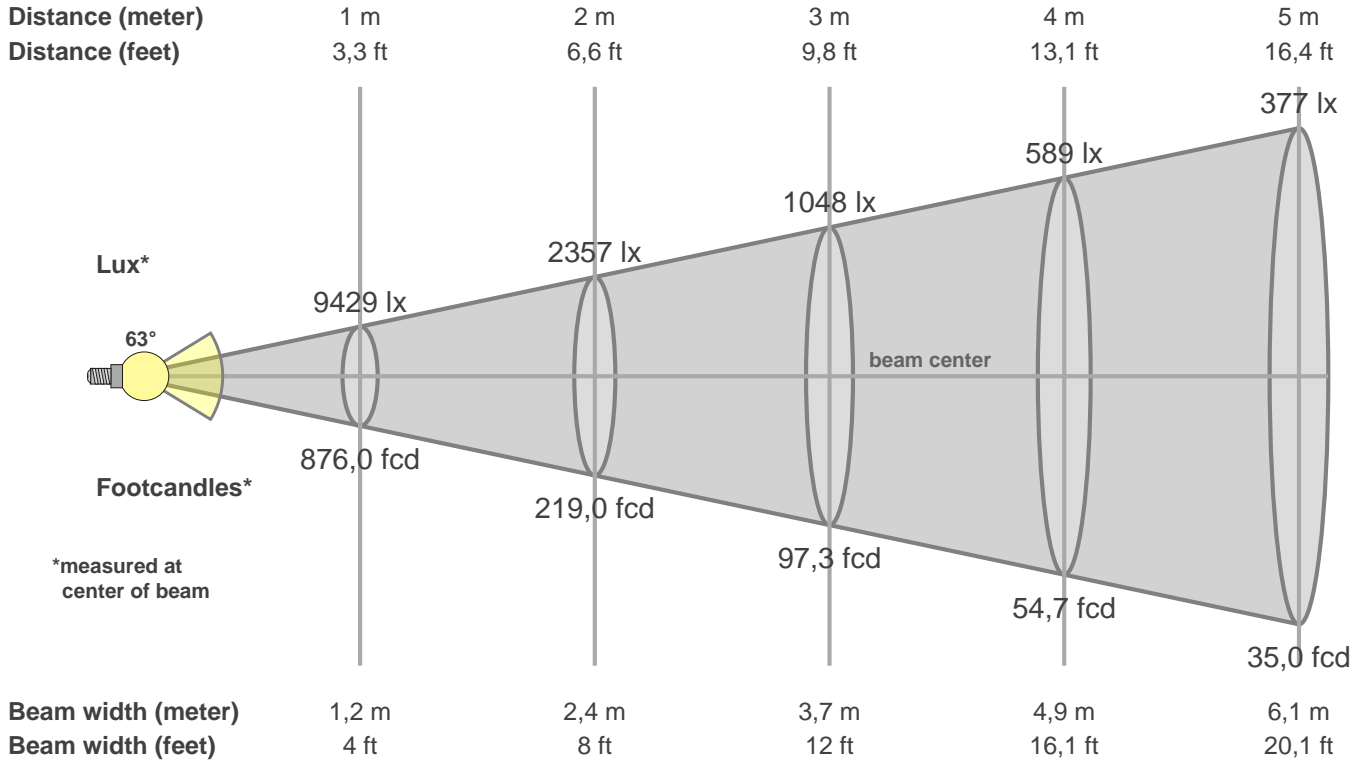
Color parameters

CCT	CRI	CRI R9	TM30 Rf	TM30 Rg	CQS	x	y	u	v	Duv
4221 K	83,4	12,8	80,8	96,3	77,8	0,4	0,4	0,2	0,3	0,0044

СЕВЕРО-ЗАПАДНАЯ СВЕТОТЕХНИЧЕСКАЯ ЛАБОРАТОРИЯ

Beam details

3 of 3



Intensities in 0° c-plane

0°	5°	10°	15°	20°	25°	30°	35°	40°	45°	50°	55°	60°	65°	70°	75°	80°	85°	90°	95°
9429	9210	8645	7766	6651	5441	4220	3091	2194	1555	1118	815	608	513	383	301	189	125	89	93
100%	98%	92%	82%	71%	58%	45%	33%	23%	16%	12%	9%	6%	5%	4%	3%	2%	1%	1%	1%

Intensities in 90° c-plane

0°	5°	10°	15°	20°	25°	30°	35°	40°	45°	50°	55°	60°	65°	70°	75°	80°	85°	90°	95°
9429	9311	9004	8494	7775	6909	5944	4876	3784	2788	1956	1331	905	636	453	304	203	127	47	36
100%	99%	95%	90%	82%	73%	63%	52%	40%	30%	21%	14%	10%	7%	5%	3%	2%	1%	0%	0%

Intensities in 180° c-plane

0°	5°	10°	15°	20°	25°	30°	35°	40°	45°	50°	55°	60°	65°	70°	75°	80°	85°	90°	95°
9429	9277	8753	7875	6719	5457	4230	3121	2224	1582	1148	842	632	513	403	306	200	129	98	92
100%	98%	93%	84%	71%	58%	45%	33%	24%	17%	12%	9%	7%	5%	4%	3%	2%	1%	1%	1%

Intensities in 270° c-plane

0°	5°	10°	15°	20°	25°	30°	35°	40°	45°	50°	55°	60°	65°	70°	75°	80°	85°	90°	95°
9429	9335	9001	8388	7583	6736	5855	4863	3784	2773	1933	1311	900	645	463	312	205	124	52	42
100%	99%	95%	89%	80%	71%	62%	52%	40%	29%	20%	14%	10%	7%	5%	3%	2%	1%	1%	0%

Beam angle 50%	Field angle 10%	Cutoff angle 2,5%	Intensity ratio in 120° cone	Intensity ratio in 90° cone
62,9°	118,2°	161,0°	87,3%	73,0%