

Эффективность света:

**142 Lumen/Watt**

Качество света:

**CRI: 83,6**

Цветовая температура:

**4271 K**

Поток: 6981 lm

Интенс.: 4434 cd

Мощн.: 49,1 W

КПД: 0,95

4 PLANES



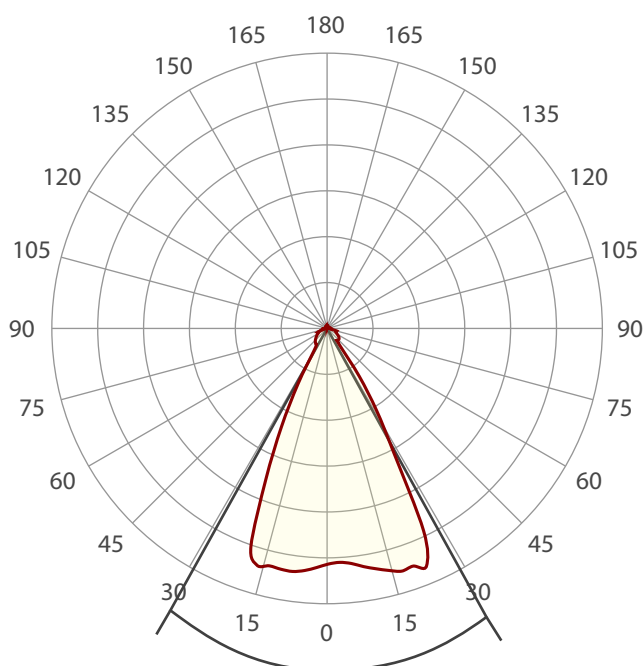
Название продукта:

**VILED CC**

**M3-O-H-48-266.100.160-4-0-67**

Дата и время:

**25.01.2018 12:13:17**



Угол пучка

**57,3°**

Цвет

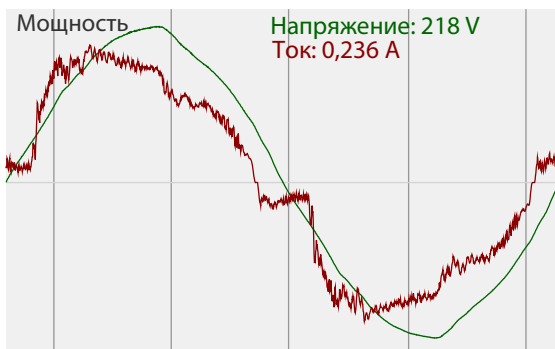
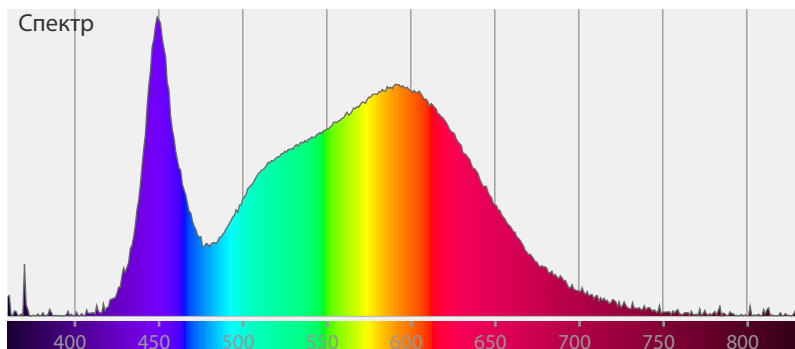


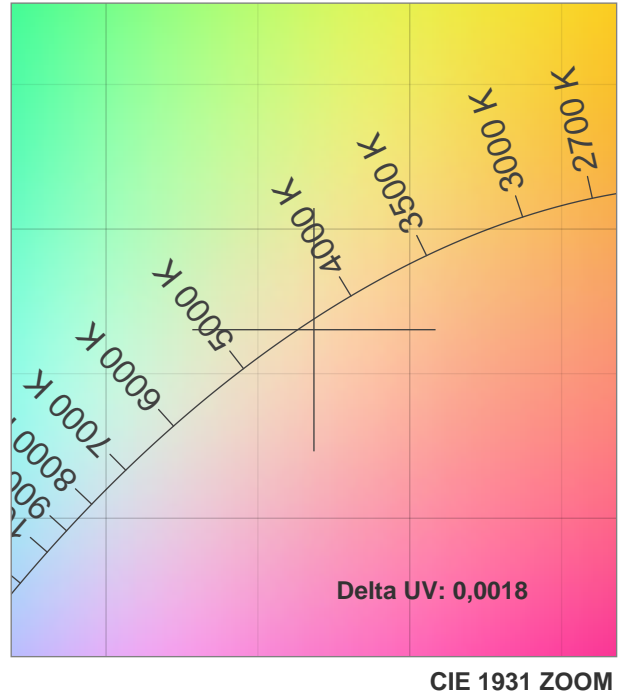
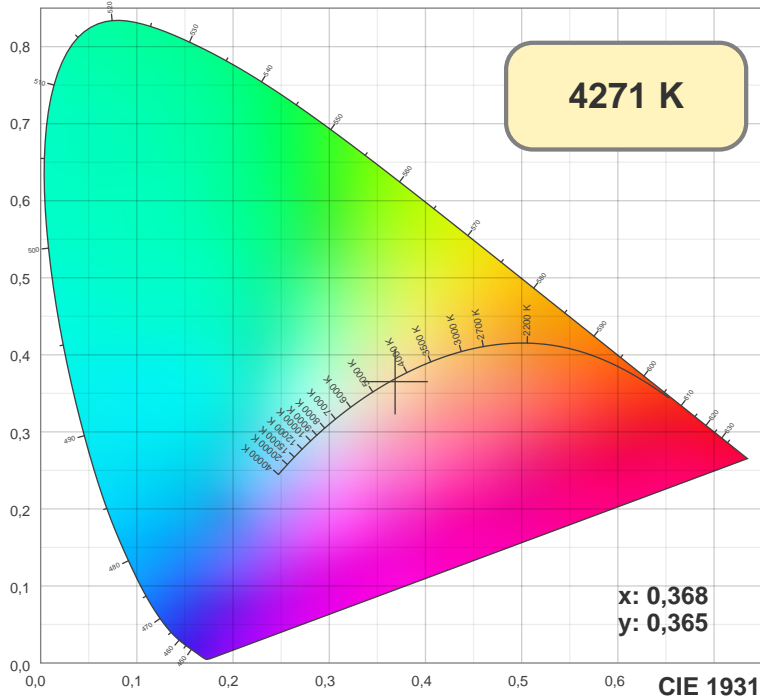
CIE1931

x: 0,368

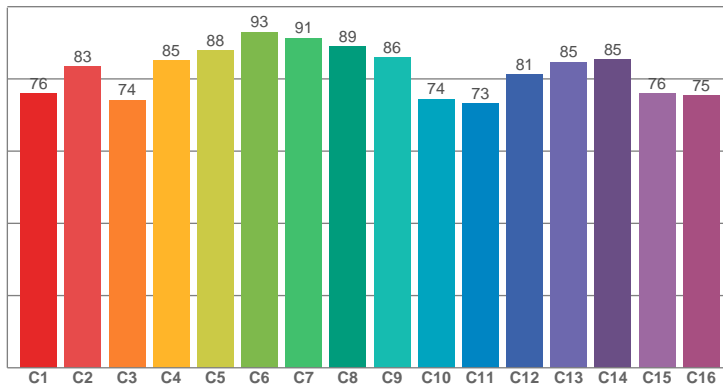
y: 0,365

Спектр

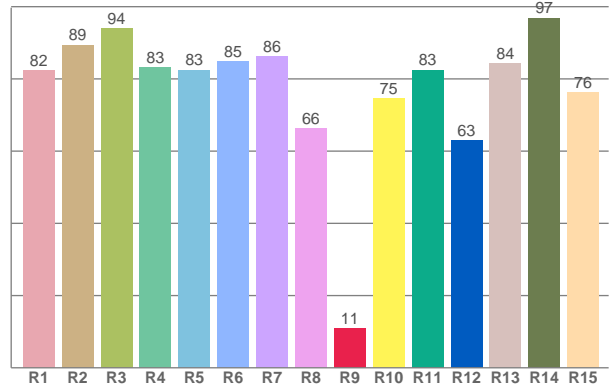




TM30: 82,0



CRI: 83,6 (R1-R8)



CRI R values, only R1-R8 are used to calculate final CRI value

R1	R2	R3	R4	R5	R6	R7	R8	R9	R10	R11	R12	R13	R14	R15
82,31	89,42	93,99	83,19	82,50	84,79	86,15	66,30	10,87	74,51	82,50	63,04	84,19	96,86	76,21

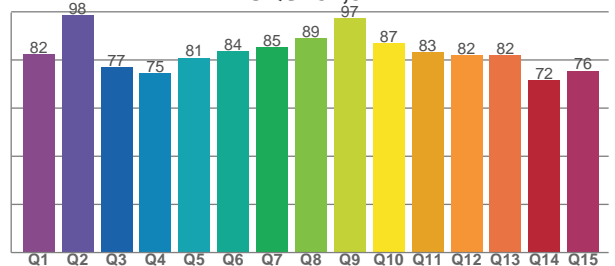
TM30 C values, 16 binned values out of total of 99 C values

C1	C2	C3	C4	C5	C6	C7	C8	C9	C10	C11	C12	C13	C14	C15	C16
76,06	83,36	74,15	85,14	87,93	93,05	91,37	89,09	85,86	74,49	73,25	81,27	84,68	85,40	75,96	75,38

CQS Q values

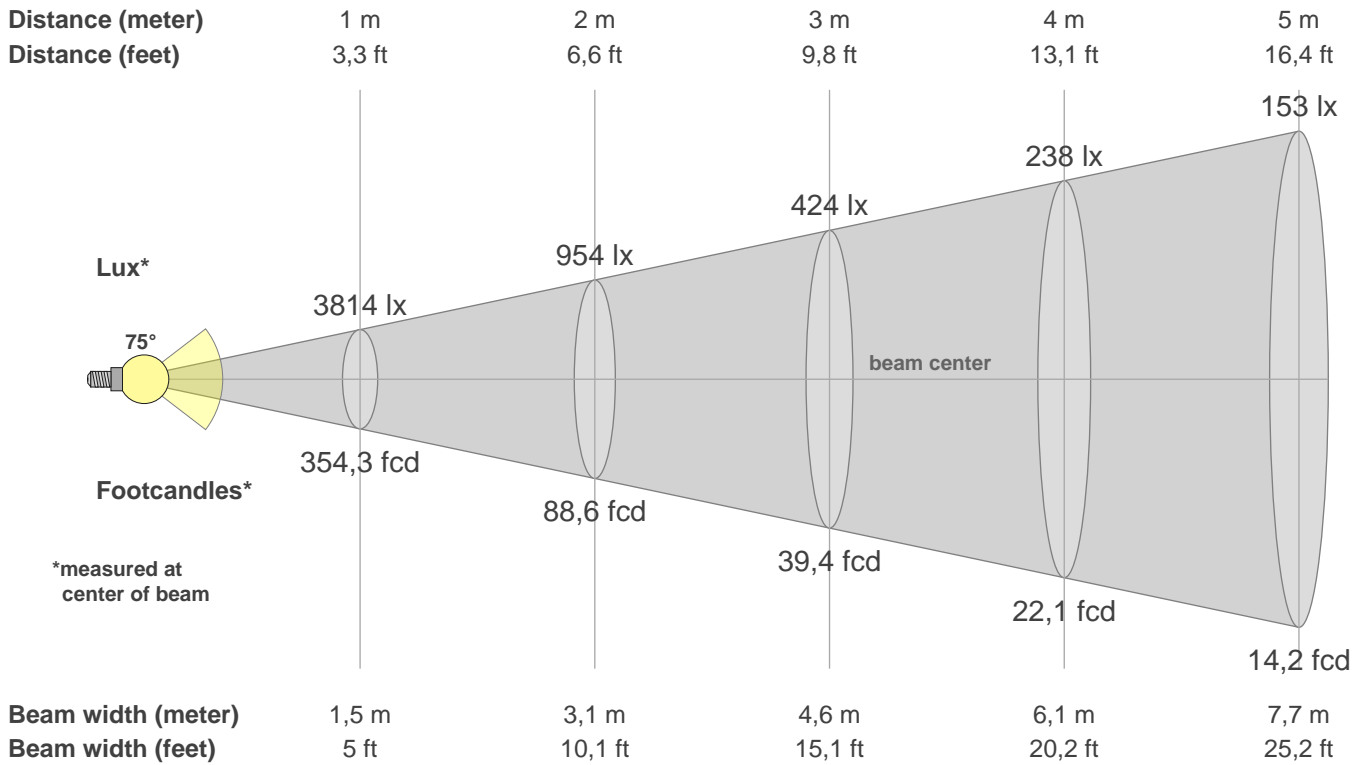
Q1	Q2	Q3	Q4	Q5	Q6	Q7	Q8	Q9	Q10	Q11	Q12	Q13	Q14	Q15
82,29	98,48	77,06	74,55	80,97	83,63	85,49	88,93	97,26	86,96	83,21	81,90	81,96	71,78	75,56

CQS: 81,8



Color parameters

CCT	CRI	CRI R9	TM30 Rf	TM30 Rg	CQS	x	y	u	v	Duv
4271 K	83,6	10,9	82,0	96,4	81,8	0,4	0,4	0,2	0,3	0,0018



**Intensities in 0° c-plane**

0°	2°	4°	6°	8°	10°	12°	14°	16°	18°	20°	22°	24°	26°	28°	30°	32°	34°	36°	38°
3814	3805	3807	3832	3886	3937	3987	4039	4088	4109	4099	4155	3922	3387	2407	1830	1353	914	497	309
100%	100%	100%	100%	102%	103%	105%	106%	107%	108%	107%	109%	103%	89%	63%	48%	35%	24%	13%	8%

**Intensities in 90° c-plane**

0°	2°	4°	6°	8°	10°	12°	14°	16°	18°	20°	22°	24°	26°	28°	30°	32°	34°	36°	38°
3814	3817	3818	3820	3816	3816	3818	3819	3823	3826	3827	3830	3839	3853	3873	3892	3920	3957	4009	4075
100%	100%	100%	100%	100%	100%	100%	100%	100%	100%	100%	100%	101%	101%	102%	102%	103%	104%	105%	107%

**Intensities in 180° c-plane**

0°	2°	4°	6°	8°	10°	12°	14°	16°	18°	20°	22°	24°	26°	28°	30°	32°	34°	36°	38°
3814	3868	3911	3949	3977	3975	3968	3964	3995	3858	3456	2674	2038	1463	947	522	365	316	309	303
100%	101%	103%	104%	104%	104%	104%	104%	105%	101%	91%	70%	53%	38%	25%	14%	10%	8%	8%	8%

**Intensities in 270° c-plane**

0°	2°	4°	6°	8°	10°	12°	14°	16°	18°	20°	22°	24°	26°	28°	30°	32°	34°	36°	38°
3814	3815	3818	3821	3823	3821	3822	3827	3835	3841	3848	3860	3878	3900	3926	3957	4011	4081	4167	4227
100%	100%	100%	100%	100%	100%	100%	100%	101%	101%	101%	101%	102%	102%	103%	104%	105%	107%	109%	111%

Beam angle 50%	Field angle 10%	Cutoff angle 2,5%	Intensity ratio in 120° cone	Intensity ratio in 90° cone
75,1°	92,8°	146,9°	88,1%	67,9%