

Эффективность света:

**142 Lumen/Watt**

Качество света:

**CRI: 83,9**

Цветовая температура:

**4343 K**

Поток: 9105 lm

Интенс.: 5096 cd

Мощн.: 63,9 W

КПД: 0,97

4 PLANES



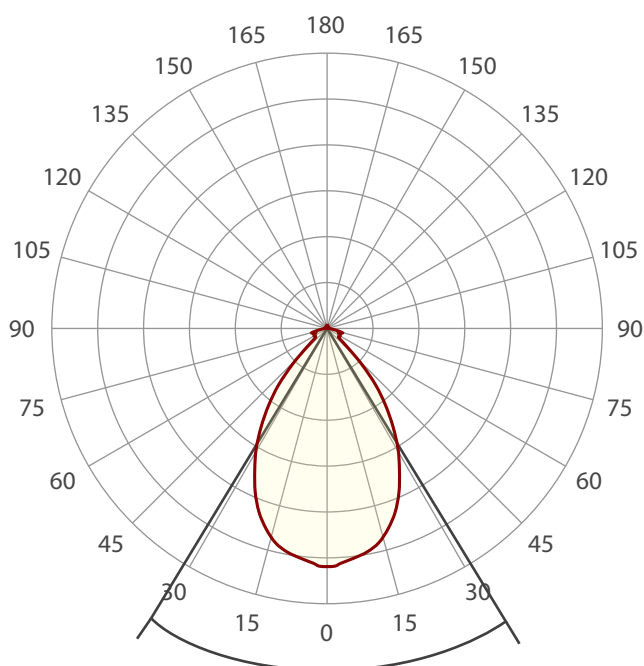
Название продукта:

**VILED CC**

**M3-O-H-64-366.100.160-4-0-67**

Дата и время:

**13.02.2018 14:17:26**



Угол пучка

**63,3°**

Цвет

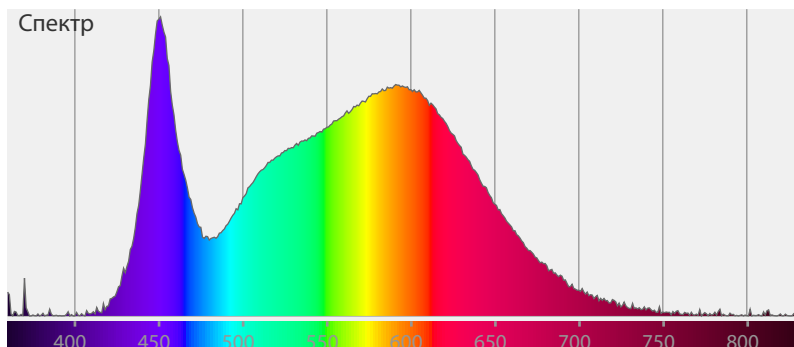


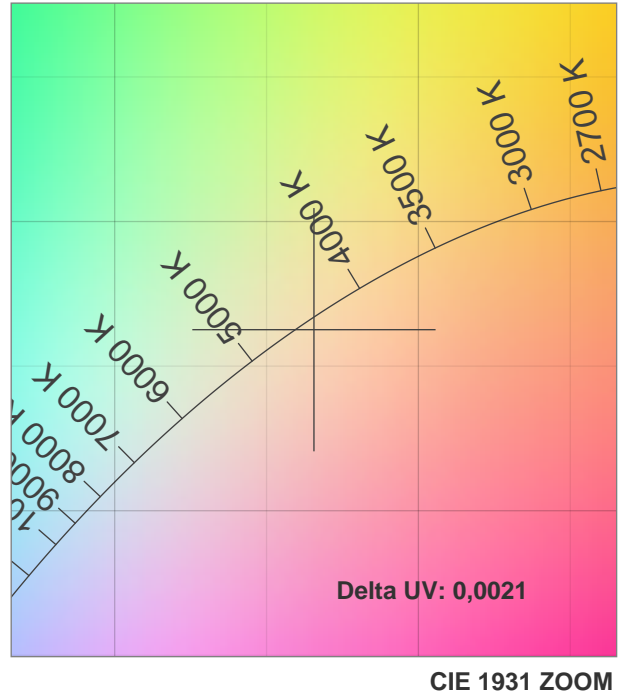
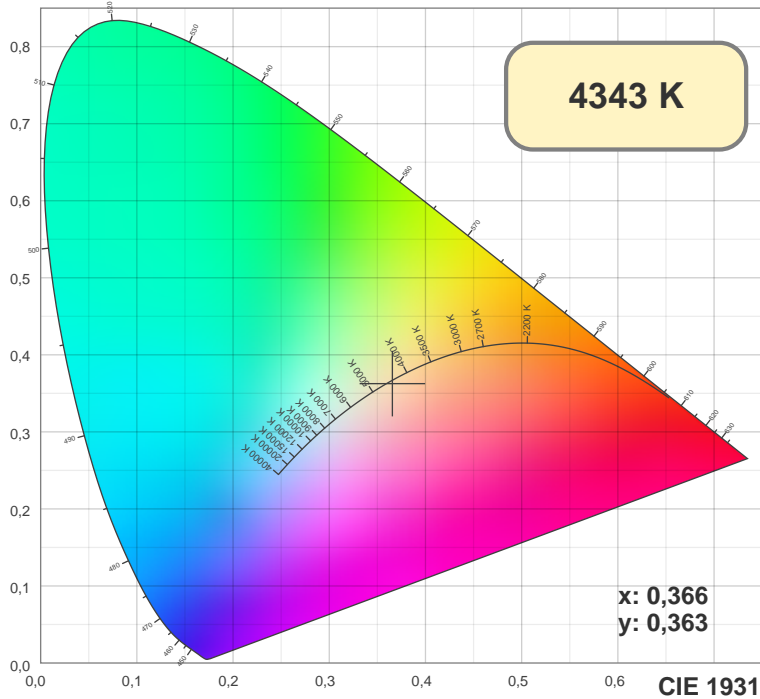
CIE1931

x: 0,366

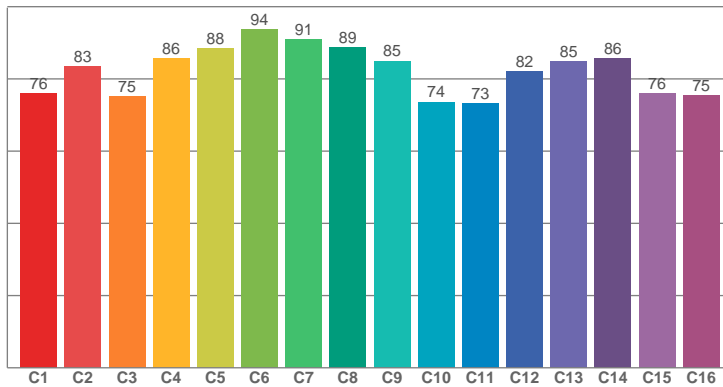
y: 0,363

Спектр

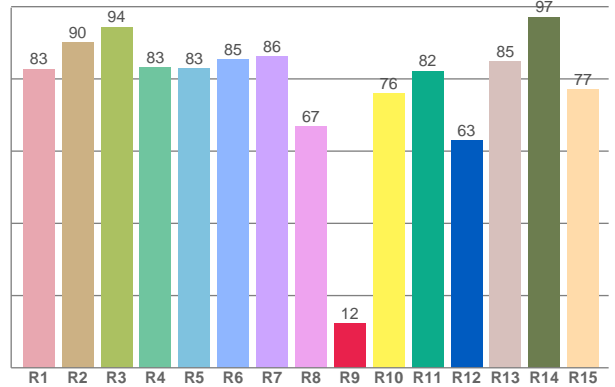




TM30: 82,1



CRI: 83,9 (R1-R8)



CRI R values, only R1-R8 are used to calculate final CRI value

R1	R2	R3	R4	R5	R6	R7	R8	R9	R10	R11	R12	R13	R14	R15
82,79	90,14	94,37	83,08	82,83	85,36	86,27	66,75	12,36	75,88	82,18	62,91	84,86	97,14	77,00

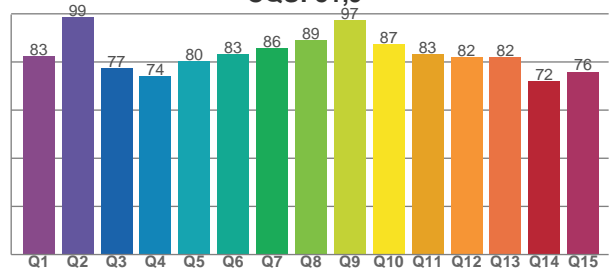
TM30 C values, 16 binned values out of total of 99 C values

C1	C2	C3	C4	C5	C6	C7	C8	C9	C10	C11	C12	C13	C14	C15	C16
76,07	83,47	75,12	85,70	88,43	93,64	90,95	88,72	84,98	73,65	73,29	82,03	84,78	85,76	76,04	75,40

CQS Q values

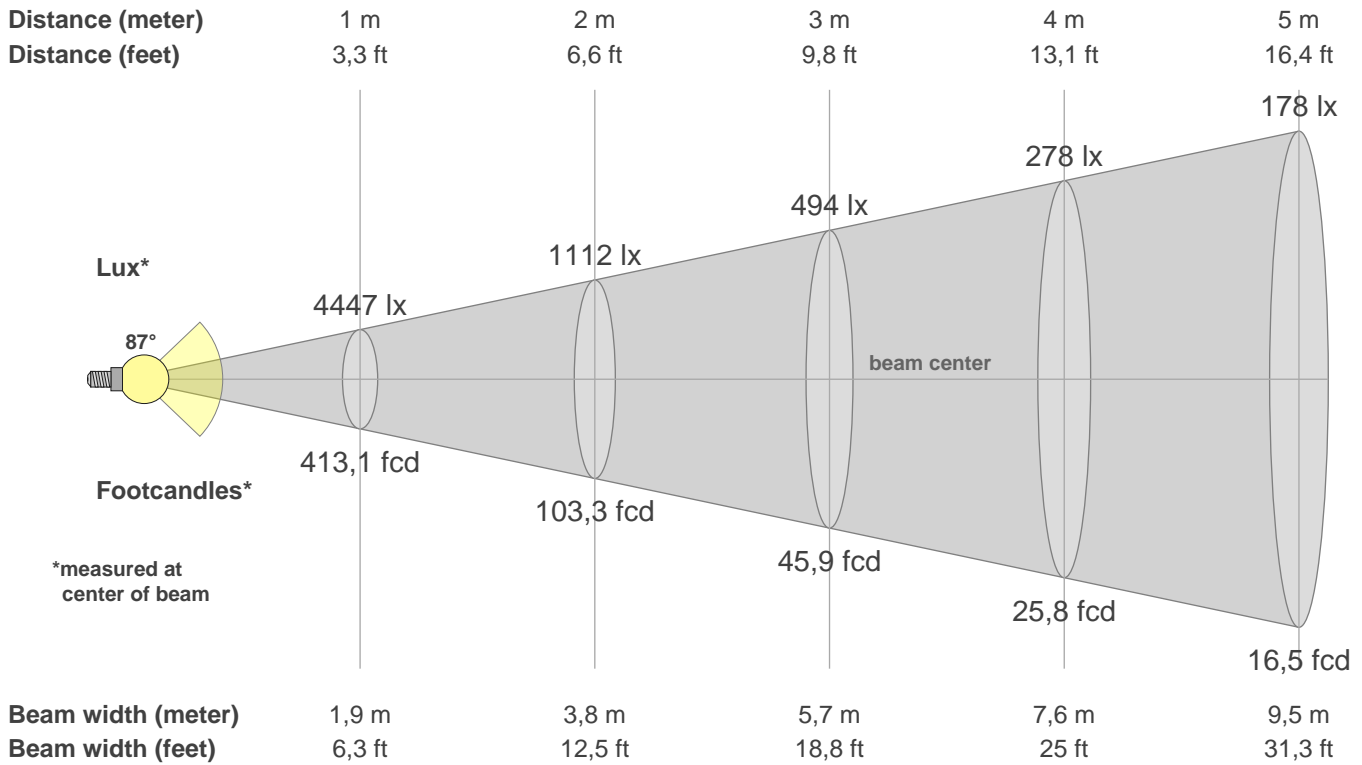
Q1	Q2	Q3	Q4	Q5	Q6	Q7	Q8	Q9	Q10	Q11	Q12	Q13	Q14	Q15
82,52	98,61	77,32	73,97	80,32	83,31	85,67	88,99	97,34	87,36	83,29	81,93	81,98	72,18	75,96

CQS: 81,9



Color parameters

CCT	CRI	CRI R9	TM30 Rf	TM30 Rg	CQS	x	y	u	v	Duv
4343 K	83,9	12,4	82,1	96,0	81,9	0,4	0,4	0,2	0,3	0,0021



**Intensities in 0° c-plane**

0°	5°	10°	15°	20°	25°	30°	35°	40°	45°	50°	55°	60°	65°	70°	75°	80°	85°	90°	95°
4447	4344	4233	4019	3674	3189	2656	2068	1467	806	350	263	276	259	263	283	141	65	32	16
100%	98%	95%	90%	83%	72%	60%	46%	33%	18%	8%	6%	6%	6%	6%	6%	3%	1%	1%	0%

**Intensities in 90° c-plane**

0°	5°	10°	15°	20°	25°	30°	35°	40°	45°	50°	55°	60°	65°	70°	75°	80°	85°	90°	95°
4447	4478	4468	4428	4357	4278	4228	4198	4183	4226	4365	4729	4825	2619	1023	345	124	43	25	24
100%	101%	100%	100%	98%	96%	95%	94%	94%	95%	98%	106%	109%	59%	23%	8%	3%	1%	1%	1%

**Intensities in 180° c-plane**

0°	5°	10°	15°	20°	25°	30°	35°	40°	45°	50°	55°	60°	65°	70°	75°	80°	85°	90°	95°
4447	4344	4233	4019	3674	3189	2656	2068	1467	806	350	263	276	259	263	283	141	65	32	16
100%	98%	95%	90%	83%	72%	60%	46%	33%	18%	8%	6%	6%	6%	6%	6%	3%	1%	1%	0%

**Intensities in 270° c-plane**

0°	5°	10°	15°	20°	25°	30°	35°	40°	45°	50°	55°	60°	65°	70°	75°	80°	85°	90°	95°
4447	4478	4468	4428	4357	4278	4228	4198	4183	4226	4365	4729	4825	2619	1023	345	124	43	25	24
100%	101%	100%	100%	98%	96%	95%	94%	94%	95%	98%	106%	109%	59%	23%	8%	3%	1%	1%	1%

Beam angle 50%	Field angle 10%	Cutoff angle 2,5%	Intensity ratio in 120° cone	Intensity ratio in 90° cone
87,3°	112,5°	161,4°	85,7%	64,5%