

# СЕВЕРО-ЗАПАДНАЯ СВЕТОТЕХНИЧЕСКАЯ ЛАБОРАТОРИЯ

Эффективность света:

**126 Lumen/Watt**

Качество света:

**CRI: 84,6**

Цветовая температура:

**4362 K**

Поток: 12080 lm

Интенс.: 4138 cd

Мощн.: 96,1 W

КПД: 0,97

4 PLANES



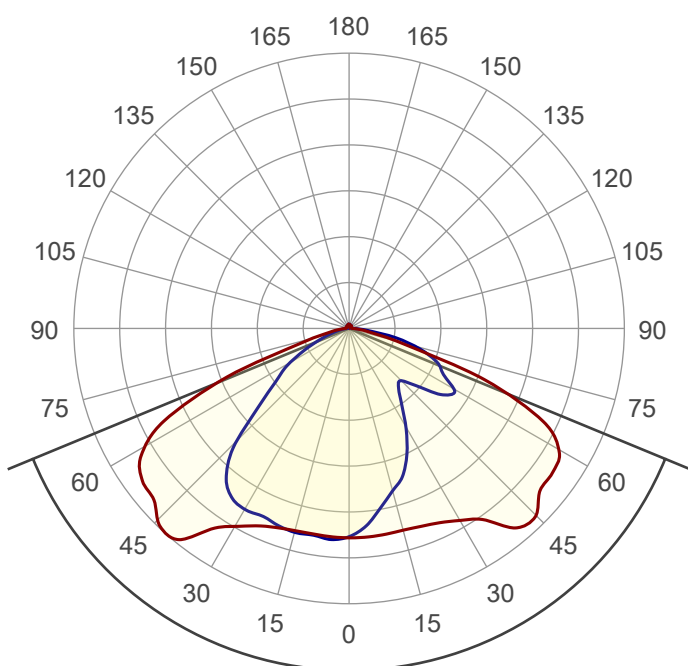
Название продукта:

СС

M2-K-H-96-530.100.130-4-0-67

Дата и время:

21.07.2017 17:38:43



Угол пучка

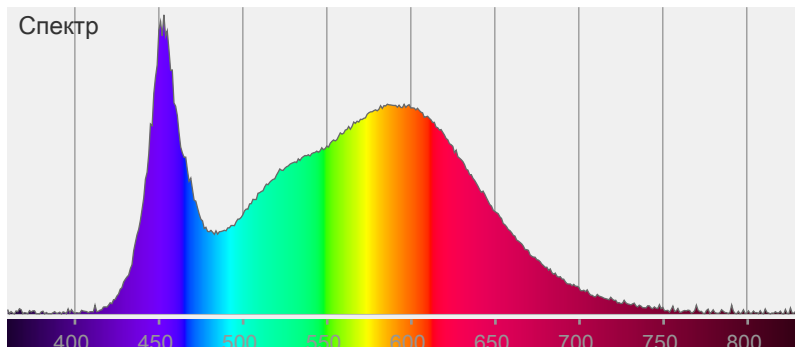
**135,1°**

Цвет



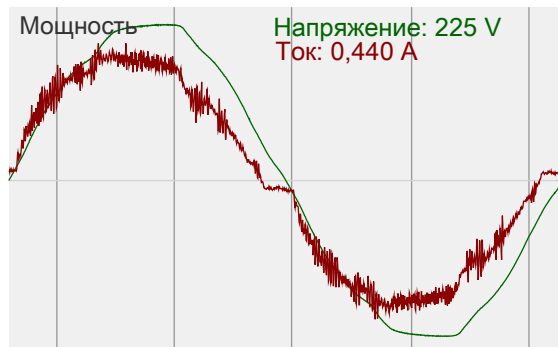
CIE1931  
x: 0,364  
y: 0,357

Спектр

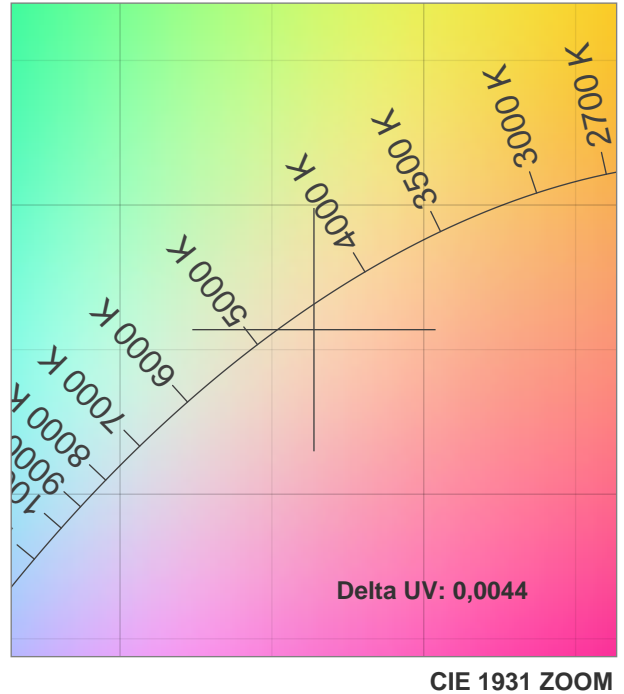
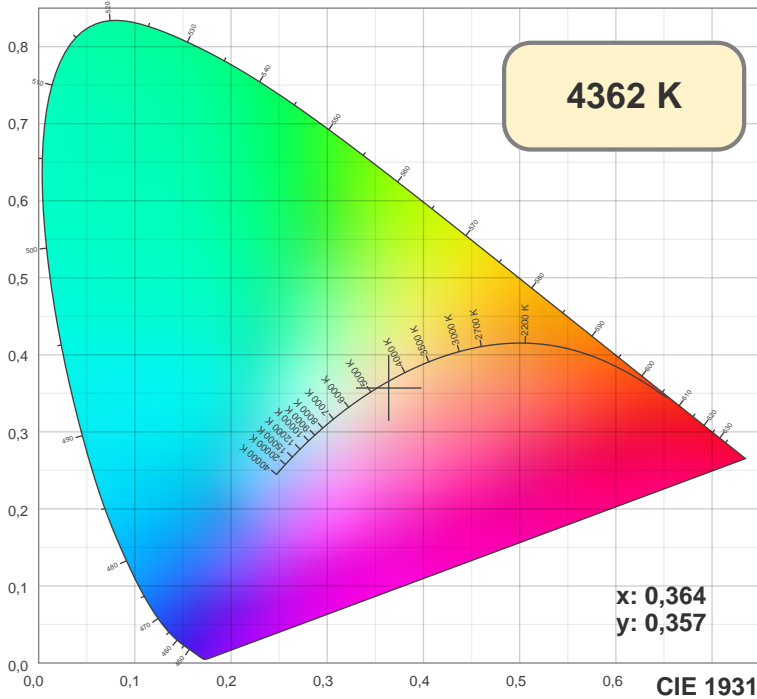


Мощность

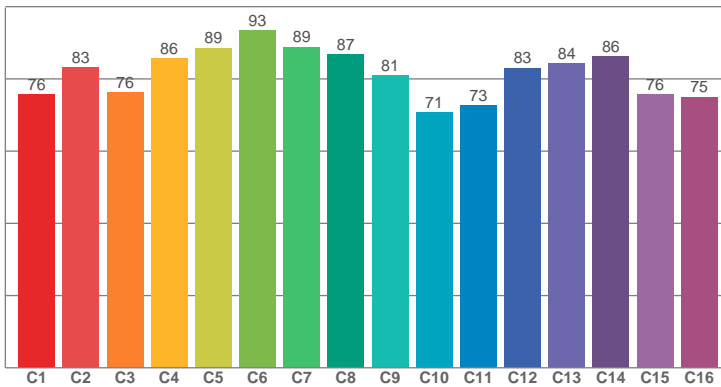
Напряжение: 225 V  
Ток: 0,440 A



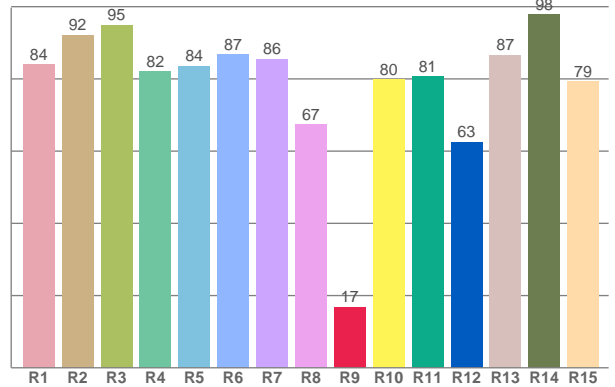
# СЕВЕРО-ЗАПАДНАЯ СВЕТОТЕХНИЧЕСКАЯ ЛАБОРАТОРИЯ



TM30: 81,5



CRI: 84,6 (R1-R8)



CRI R values, only R1-R8 are used to calculate final CRI value

R1	R2	R3	R4	R5	R6	R7	R8	R9	R10	R11	R12	R13	R14	R15
84,01	92,21	94,93	82,16	83,58	86,79	85,54	67,36	16,85	79,77	80,64	62,54	86,63	97,79	79,30

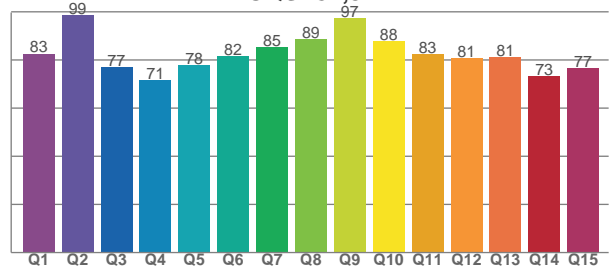
TM30 C values, 16 binned values out of total of 99 C values

C1	C2	C3	C4	C5	C6	C7	C8	C9	C10	C11	C12	C13	C14	C15	C16
75,67	83,09	76,25	85,64	88,59	93,44	88,88	86,79	81,01	70,65	72,70	83,04	84,37	86,26	75,76	75,01

CQS Q values

Q1	Q2	Q3	Q4	Q5	Q6	Q7	Q8	Q9	Q10	Q11	Q12	Q13	Q14	Q15
82,66	98,54	76,91	71,47	77,89	81,61	85,40	88,62	97,40	87,68	82,51	80,81	81,09	73,23	76,76

CQS: 81,3



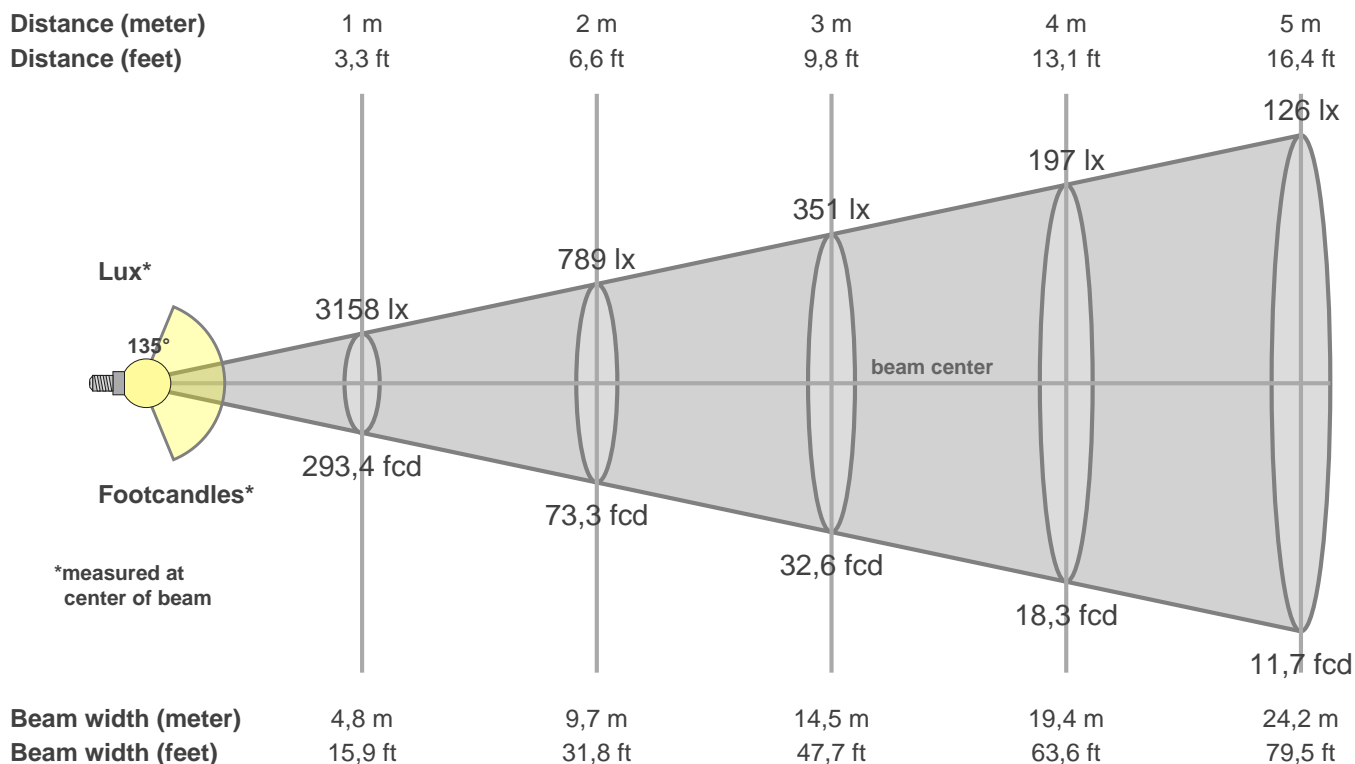
## Color parameters

CCT	CRI	CRI R9	TM30 Rf	TM30 Rg	CQS	x	y	u	v	Duv
4362 K	84,6	16,8	81,5	95,1	81,3	0,4	0,4	0,2	0,3	0,0044

# СЕВЕРО-ЗАПАДНАЯ СВЕТОТЕХНИЧЕСКАЯ ЛАБОРАТОРИЯ

## Beam details

3 of 3



### Intensities in 0° c-plane

0°	5°	10°	15°	20°	25°	30°	35°	40°	45°	50°	55°	60°	65°	70°	75°	80°	85°	90°	95°
3158	3167	3162	3160	3186	3243	3354	3532	3931	3993	3789	3765	3645	3124	1995	769	314	151	63	39
100%	100%	100%	100%	101%	103%	106%	112%	124%	126%	120%	119%	115%	99%	63%	24%	10%	5%	2%	1%

### Intensities in 90° c-plane

0°	5°	10°	15°	20°	25°	30°	35°	40°	45°	50°	55°	60°	65°	70°	75°	80°	85°	90°	95°
3158	2996	2753	2543	2369	2071	1720	1385	1172	1136	1376	1733	1810	1555	1361	1022	607	232	78	30
100%	95%	87%	81%	75%	66%	54%	44%	37%	36%	44%	55%	57%	49%	43%	32%	19%	7%	2%	1%

### Intensities in 180° c-plane

0°	5°	10°	15°	20°	25°	30°	35°	40°	45°	50°	55°	60°	65°	70°	75°	80°	85°	90°	95°
3158	3163	3157	3168	3209	3300	3466	3741	4110	4085	3919	3829	3520	2763	1558	590	273	139	67	48
100%	100%	100%	100%	102%	105%	110%	118%	130%	129%	124%	121%	111%	87%	49%	19%	9%	4%	2%	2%

### Intensities in 270° c-plane

0°	5°	10°	15°	20°	25°	30°	35°	40°	45°	50°	55°	60°	65°	70°	75°	80°	85°	90°	95°
3158	3203	3175	3191	3166	3130	3154	3097	2873	2398	1737	1319	1028	698	437	260	154	84	39	34
100%	101%	101%	101%	100%	99%	100%	98%	91%	76%	55%	42%	33%	22%	14%	8%	5%	3%	1%	1%

Beam angle 50%	Field angle 10%	Cutoff angle 2,5%	Intensity ratio in 120° cone	Intensity ratio in 90° cone
135,1°	161,3°	177,2°	70,2%	43,2%