

Эффективность света:

123 Lumen/Watt

Качество света:

CRI: 82,6

Цветовая температура:

4185 K

Поток: 3676 lm
Интенс.: 2157 cd

Мощн.: 30,0 W
КПД: 0,92

4 PLANES



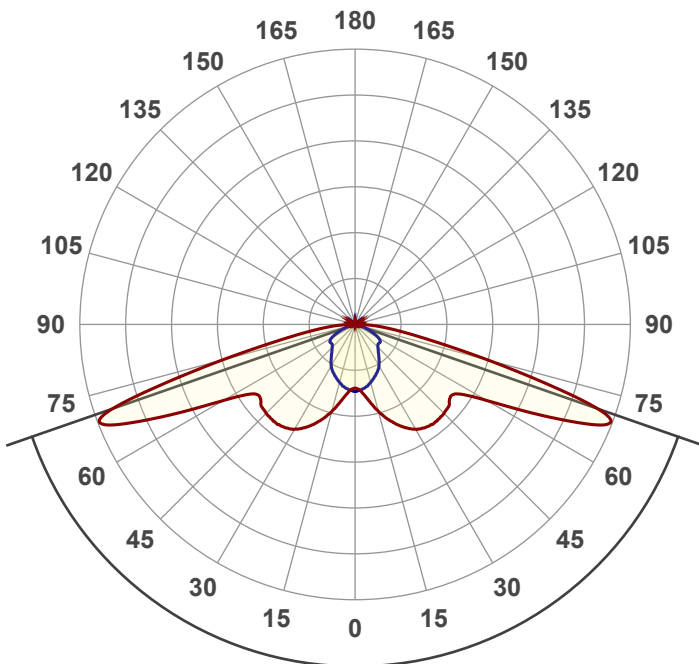
Название продукта:

VILED CC

M2-K-H-32-266.100.143-4-0-67

Дата и время:

12.02.2018 16:20:32



Угол пучка

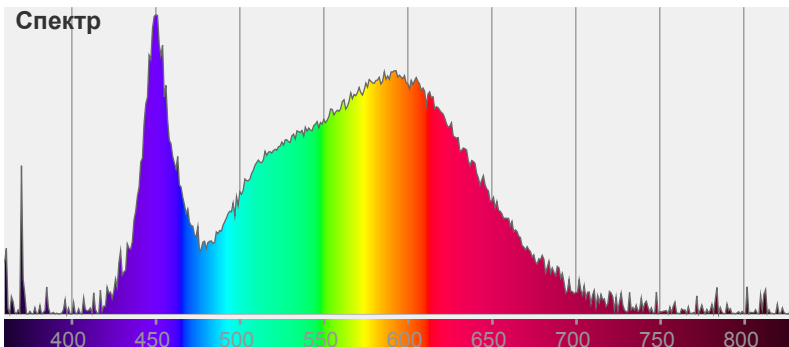
141,7°

Цвет



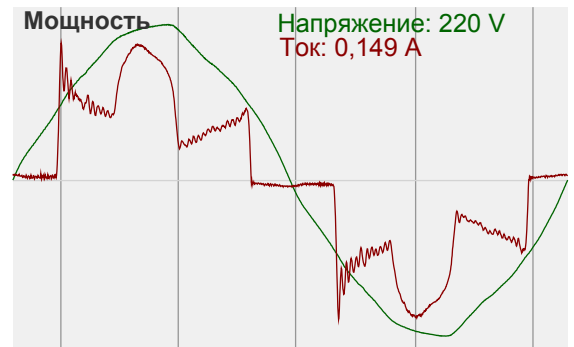
CIE1931
x: 0,373
y: 0,373

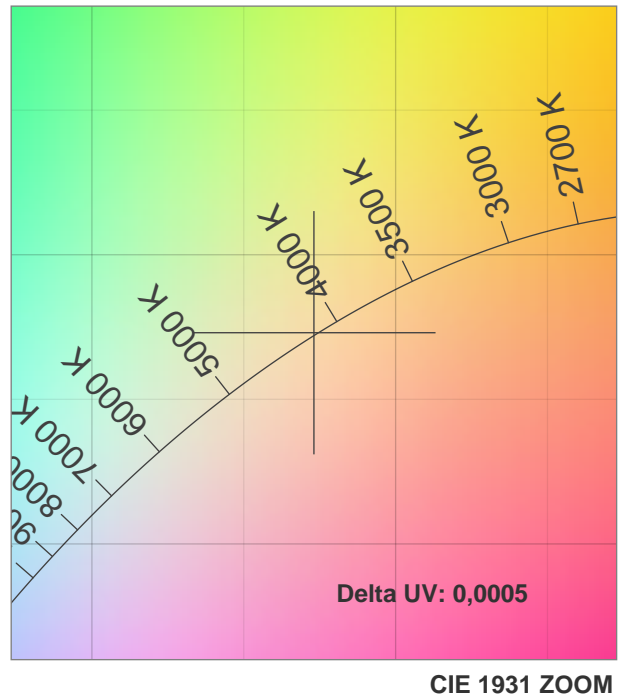
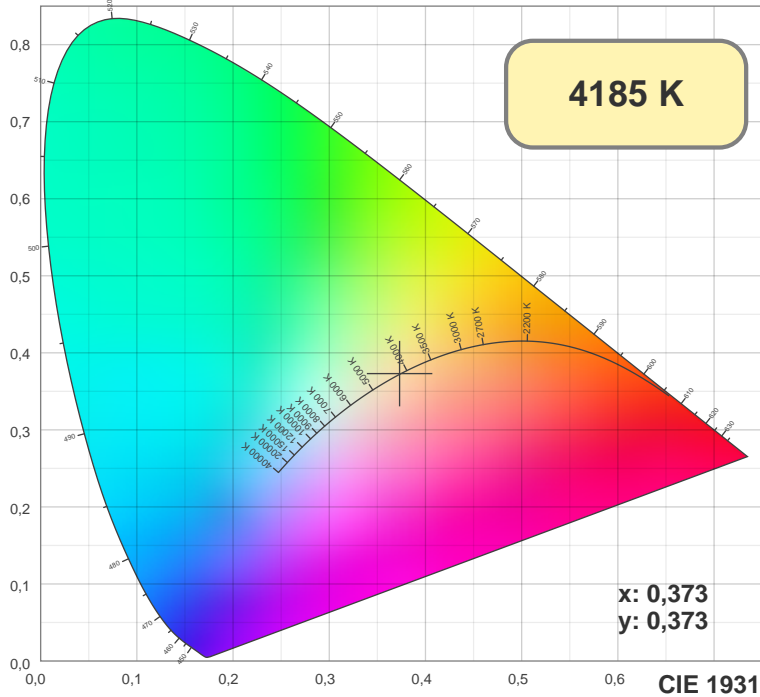
Спектр



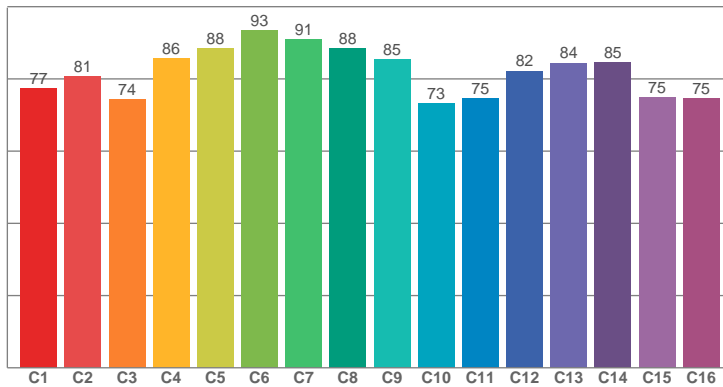
Мощность

Напряжение: 220 V
Ток: 0,149 A

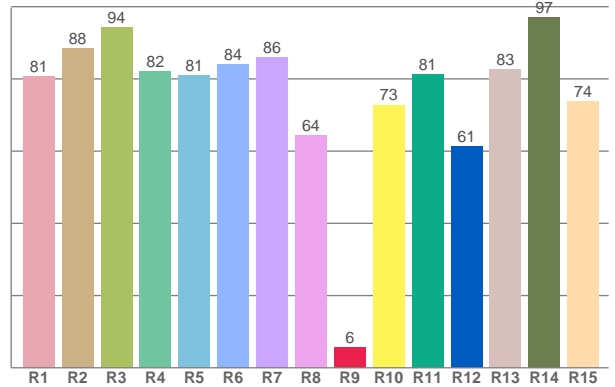




TM30: 81,9



CRI: 82,6 (R1-R8)



CRI R values, only R1-R8 are used to calculate final CRI value

R1	R2	R3	R4	R5	R6	R7	R8	R9	R10	R11	R12	R13	R14	R15
80,72	88,49	94,27	82,03	80,92	84,02	86,02	64,40	5,67	72,82	81,19	61,36	82,67	97,00	73,80

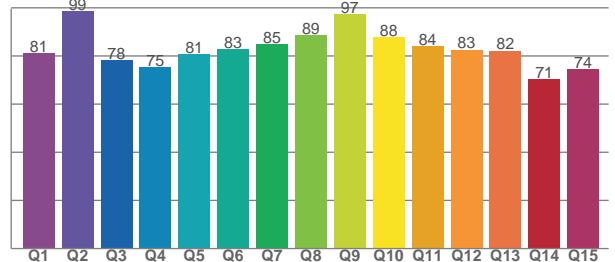
TM30 C values, 16 binned values out of total of 99 C values

C1	C2	C3	C4	C5	C6	C7	C8	C9	C10	C11	C12	C13	C14	C15	C16
77,41	80,76	74,38	85,69	88,47	93,49	90,88	88,40	85,39	73,28	74,53	82,17	84,43	84,51	74,96	74,67

CQS Q values

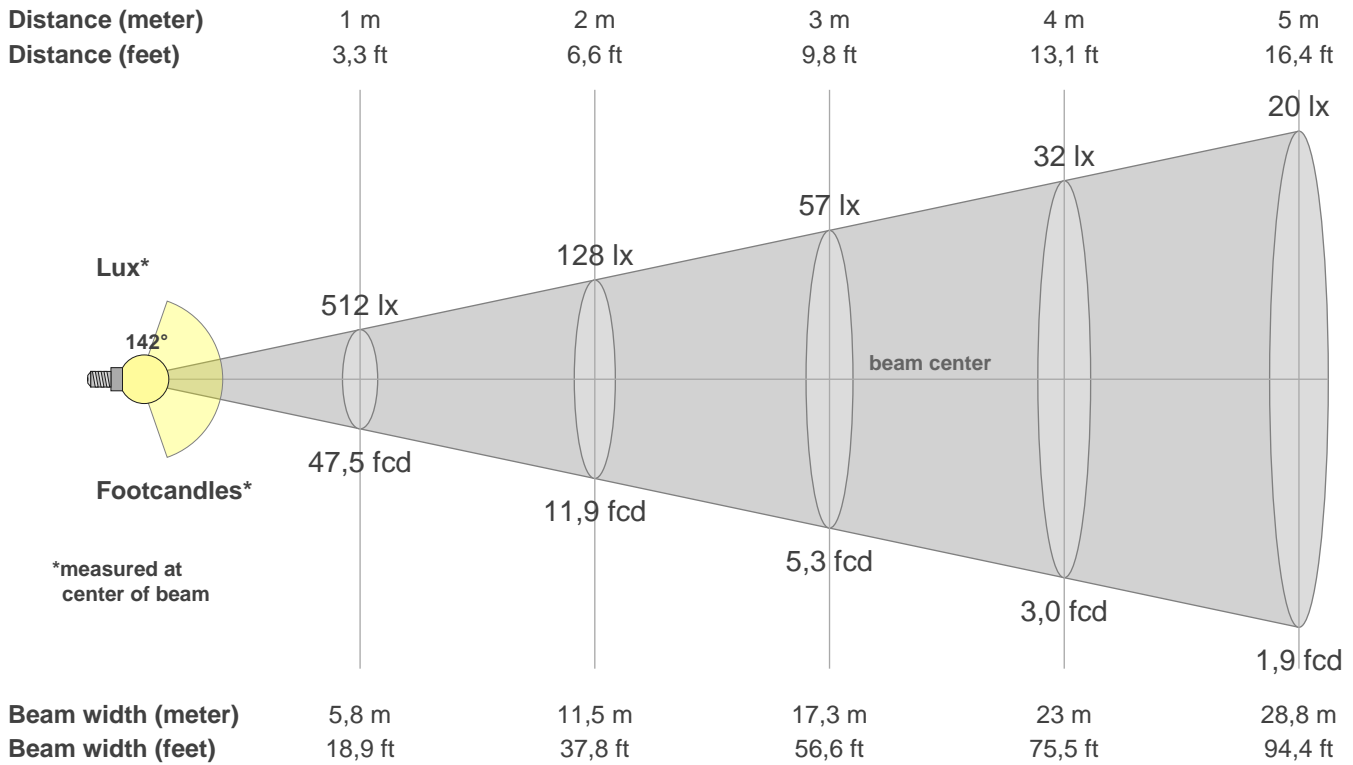
Q1	Q2	Q3	Q4	Q5	Q6	Q7	Q8	Q9	Q10	Q11	Q12	Q13	Q14	Q15
81,24	98,51	78,12	75,29	80,83	82,88	84,75	88,56	97,46	87,70	84,11	82,63	82,20	70,53	74,43

CQS: 81,7



Color parameters

CCT	CRI	CRI R9	TM30 Rf	TM30 Rg	CQS	x	y	u	v	Duv
4185 K	82,6	5,7	81,9	95,7	81,7	0,4	0,4	0,2	0,3	0,0005



Intensities in 0° c-plane

0°	5°	10°	15°	20°	25°	30°	35°	40°	45°	50°	55°	60°	65°	70°	75°	80°	85°	90°	95°
512	528	606	710	807	891	954	985	997	991	970	957	1201	1759	2125	1087	453	197	51	20
100%	103%	119%	139%	158%	174%	186%	193%	195%	194%	190%	187%	235%	344%	415%	212%	89%	38%	10%	4%

Intensities in 90° c-plane

0°	5°	10°	15°	20°	25°	30°	35°	40°	45°	50°	55°	60°	65°	70°	75°	80°	85°	90°	95°
512	518	499	473	443	413	376	329	285	255	238	242	215	154	92	51	29	15	10	10
100%	101%	98%	92%	86%	81%	74%	64%	56%	50%	47%	47%	42%	30%	18%	10%	6%	3%	2%	2%

Intensities in 180° c-plane

0°	5°	10°	15°	20°	25°	30°	35°	40°	45°	50°	55°	60°	65°	70°	75°	80°	85°	90°	95°
512	528	606	710	807	891	954	985	997	991	970	957	1201	1759	2125	1087	453	197	51	20
100%	103%	119%	139%	158%	174%	186%	193%	195%	194%	190%	187%	235%	344%	415%	212%	89%	38%	10%	4%

Intensities in 270° c-plane

0°	5°	10°	15°	20°	25°	30°	35°	40°	45°	50°	55°	60°	65°	70°	75°	80°	85°	90°	95°
512	518	499	473	443	413	376	329	285	255	238	242	215	154	92	51	29	15	10	10
100%	101%	98%	92%	86%	81%	74%	64%	56%	50%	47%	47%	42%	30%	18%	10%	6%	3%	2%	2%

Beam angle 50%	Field angle 10%	Cutoff angle 2,5%	Intensity ratio in 120° cone	Intensity ratio in 90° cone
141,7°	169,2°	228,0°	56,6%	33,5%