

Эффективность света:

134 Lumen/Watt

Качество света:

CRI: 85,4

Цветовая температура:

4013 K

Поток: 19927 lm

Интенс.: 5548 cd

Мощн.: 148 W

КПД: 0,95

4 PLANES



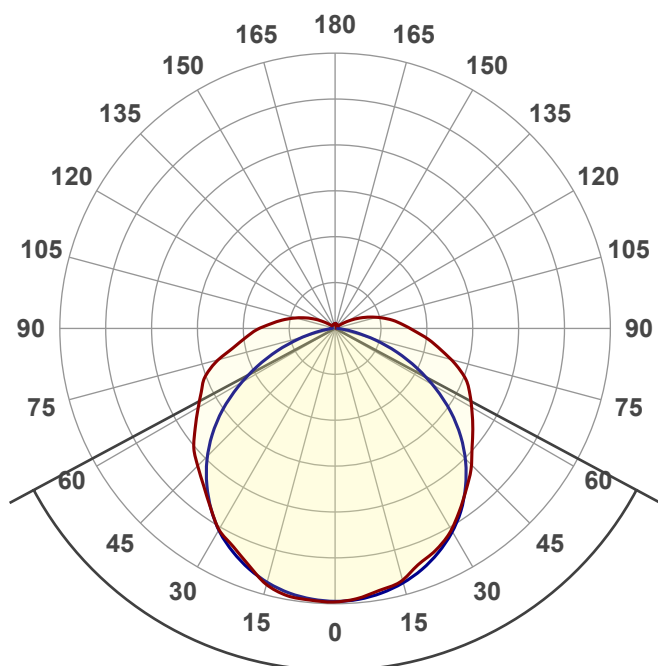
Название продукта:

ViLED CC

M1-MK-H-144-266.312.143-4-0-67

Дата и время:

15.12.2017 15:24:51



Угол пучка

123,6°

Цвет

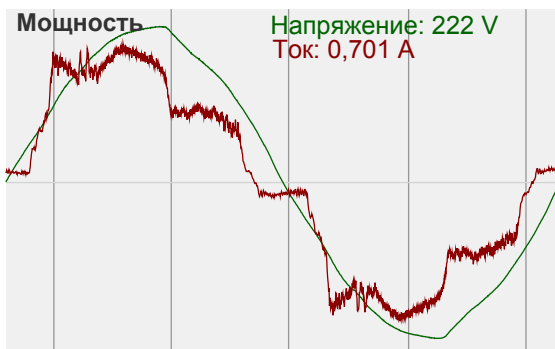
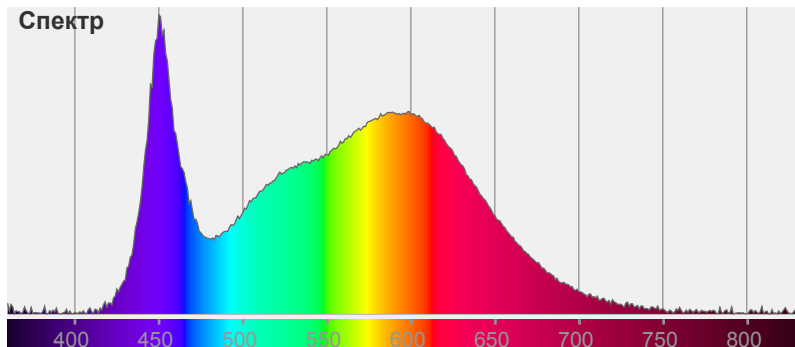


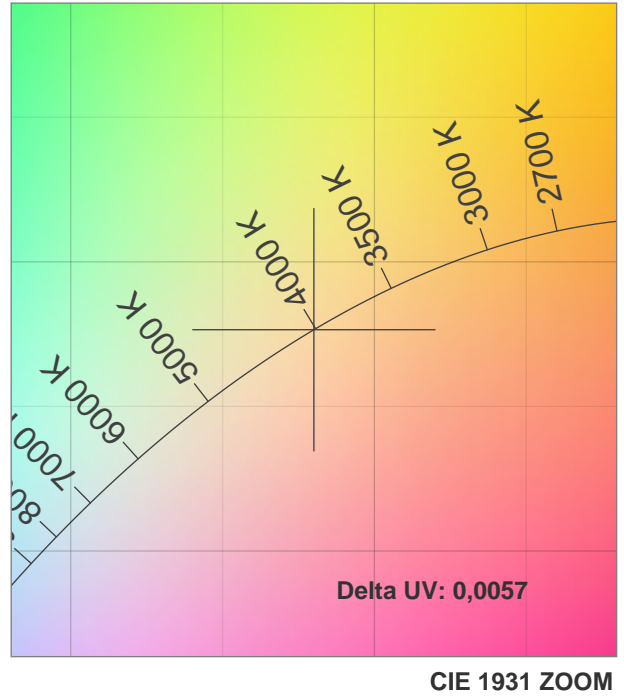
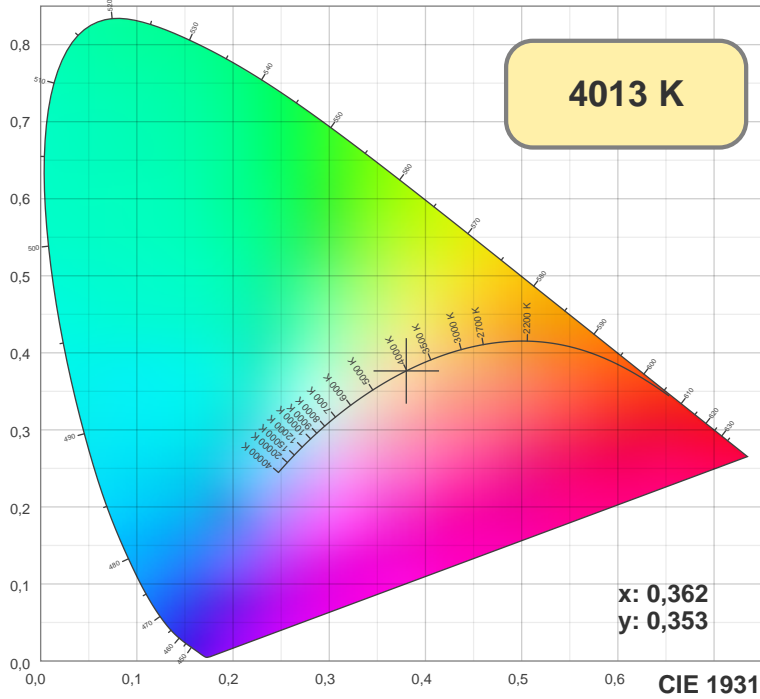
CIE1931

x: 0,362

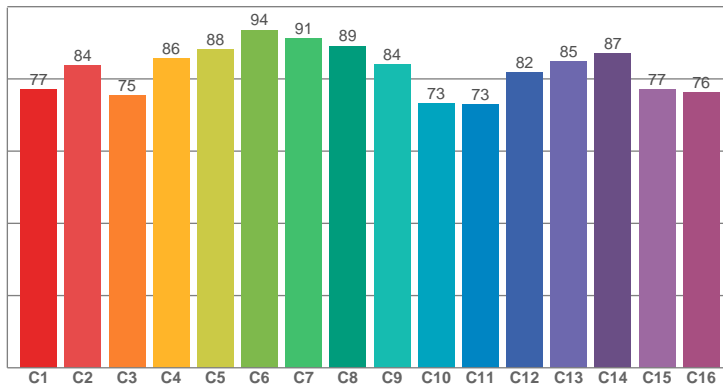
y: 0,353

Спектр

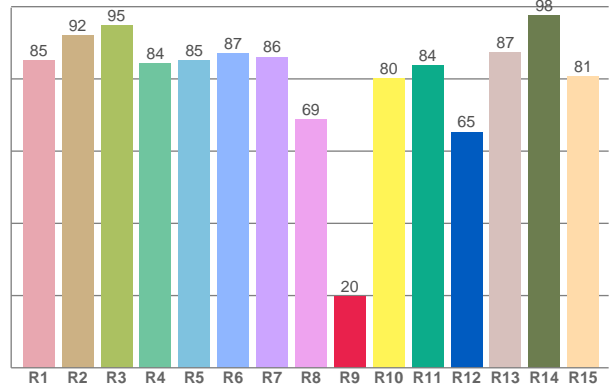




TM30: 82,3



CRI: 85,4 (R1-R8)



CRI R values, only R1-R8 are used to calculate final CRI value

R1	R2	R3	R4	R5	R6	R7	R8	R9	R10	R11	R12	R13	R14	R15
85,16	92,12	94,75	84,37	85,16	86,99	86,05	68,87	19,73	80,04	83,65	65,33	87,35	97,57	80,59

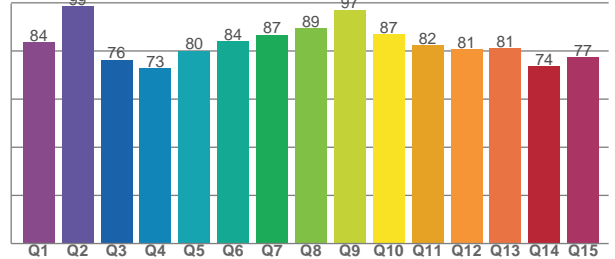
TM30 C values, 16 binned values out of total of 99 C values

C1	C2	C3	C4	C5	C6	C7	C8	C9	C10	C11	C12	C13	C14	C15	C16
77,13	83,68	75,33	85,57	88,25	93,59	91,15	89,13	83,96	73,18	73,00	81,75	84,93	87,02	77,18	76,24

CQS Q values

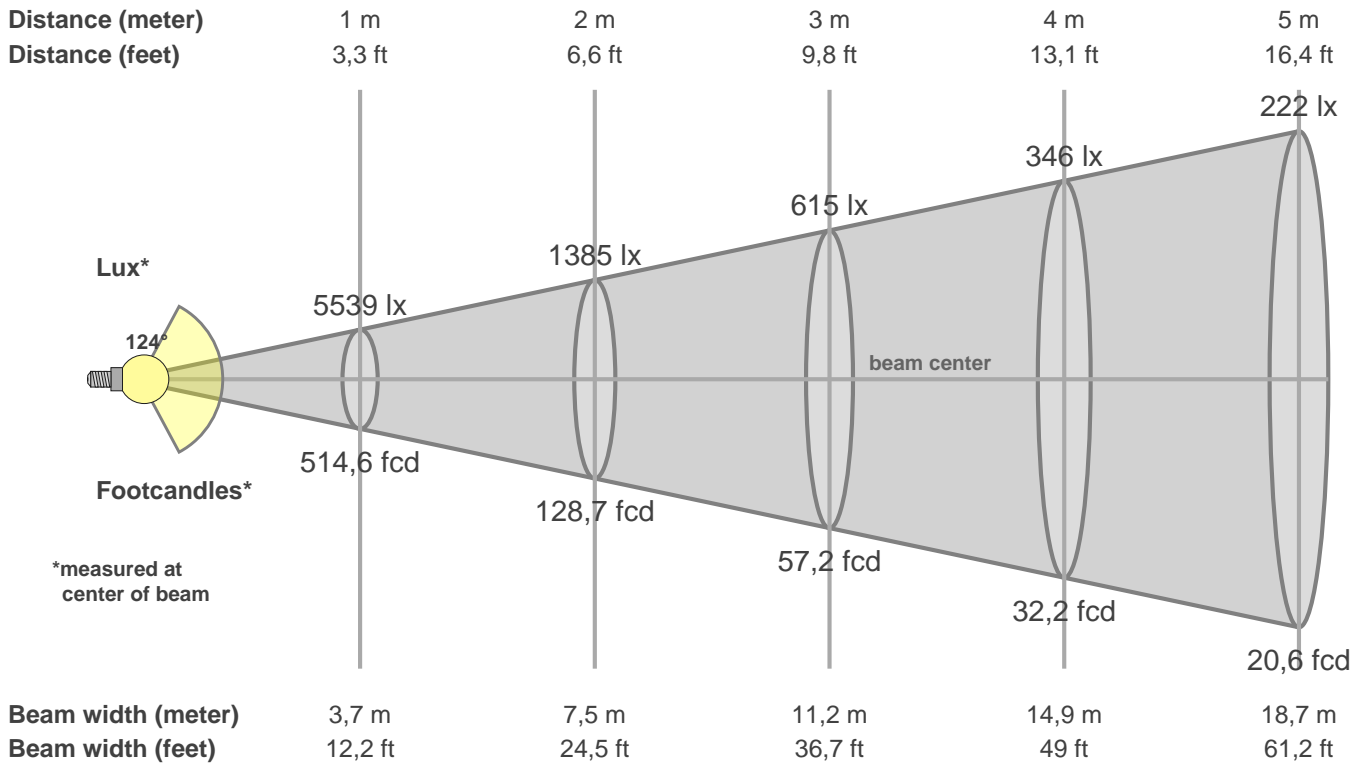
Q1	Q2	Q3	Q4	Q5	Q6	Q7	Q8	Q9	Q10	Q11	Q12	Q13	Q14	Q15
83,72	98,60	76,38	72,87	80,14	84,12	86,81	89,44	97,15	86,95	82,31	80,60	81,10	73,81	77,39

CQS: 81,9



Color parameters

CCT	CRI	CRI R9	TM30 Rf	TM30 Rg	CQS	x	y	u	v	Duv
4013 K	85,4	19,7	82,3	96,7	81,9	0,4	0,4	0,2	0,3	0,0057



Intensities in 0° c-plane

0°	9°	18°	27°	36°	45°	54°	63°	72°	81°	90°	99°	108°	117°	126°	135°	144°	153°	162°	171°
5539	5401	5141	4840	4384	3911	3453	3081	2638	2045	1527	1140	745	386	135	81	83	85	88	93
100%	97%	93%	87%	79%	71%	62%	56%	48%	37%	28%	21%	13%	7%	2%	1%	2%	2%	2%	2%

Intensities in 90° c-plane

0°	9°	18°	27°	36°	45°	54°	63°	72°	81°	90°	99°	108°	117°	126°	135°	144°	153°	162°	171°
5539	5460	5249	4898	4398	3732	2912	1968	1048	324	65	60	63	69	73	77	84	80	86	92
100%	99%	95%	88%	79%	67%	53%	36%	19%	6%	1%	1%	1%	1%	1%	1%	2%	1%	2%	2%

Intensities in 180° c-plane

0°	9°	18°	27°	36°	45°	54°	63°	72°	81°	90°	99°	108°	117°	126°	135°	144°	153°	162°	171°
5539	5511	5220	4815	4363	3941	3514	3074	2657	2004	1537	1085	702	369	138	85	84	87	89	88
100%	99%	94%	87%	79%	71%	63%	55%	48%	36%	28%	20%	13%	7%	2%	2%	2%	2%	2%	2%

Intensities in 270° c-plane

0°	9°	18°	27°	36°	45°	54°	63°	72°	81°	90°	99°	108°	117°	126°	135°	144°	153°	162°	171°
5539	5456	5233	4867	4336	3658	2826	1866	956	294	79	66	66	66	70	73	78	83	85	89
100%	99%	94%	88%	78%	66%	51%	34%	17%	5%	1%	1%	1%	1%	1%	1%	1%	1%	2%	2%

Beam angle 50%	Field angle 10%	Cutoff angle 2,5%	Intensity ratio in 120° cone	Intensity ratio in 90° cone
123,6°	194,7°	220,2°	64,1%	42,8%