

Эффективность света:

127 Lumen/Watt

Качество света:

CRI: 84,7

Цветовая температура:

4093 K

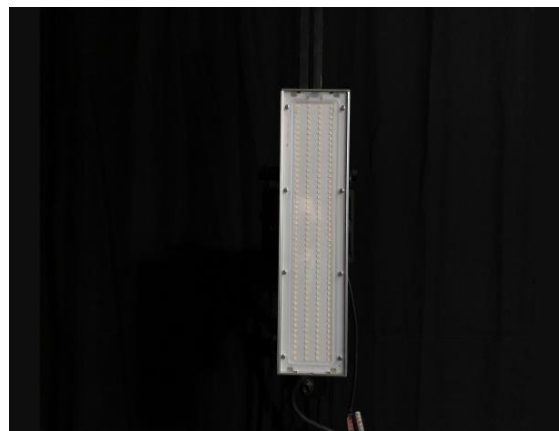
Поток: 11884 lm

Интенс.: 4228 cd

Мощн.: 93,5 W

КПД: 0,97

4 PLANES



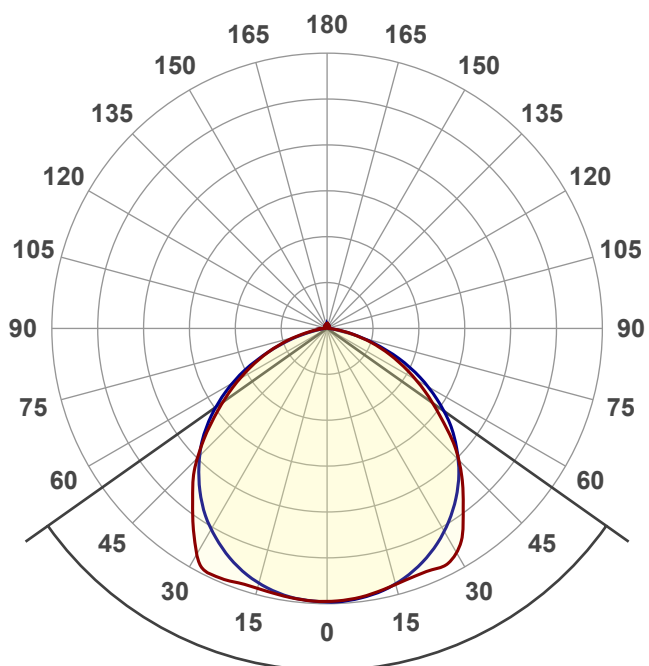
Название продукта:

ViLED CC

M1-U-H-96-366.100.173-4-0-67

Дата и время:

12.12.2017 10:58:50



Угол пучка

109,5°

Цвет

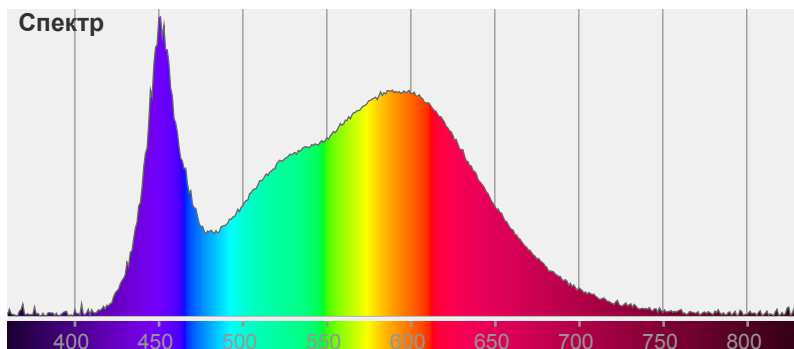


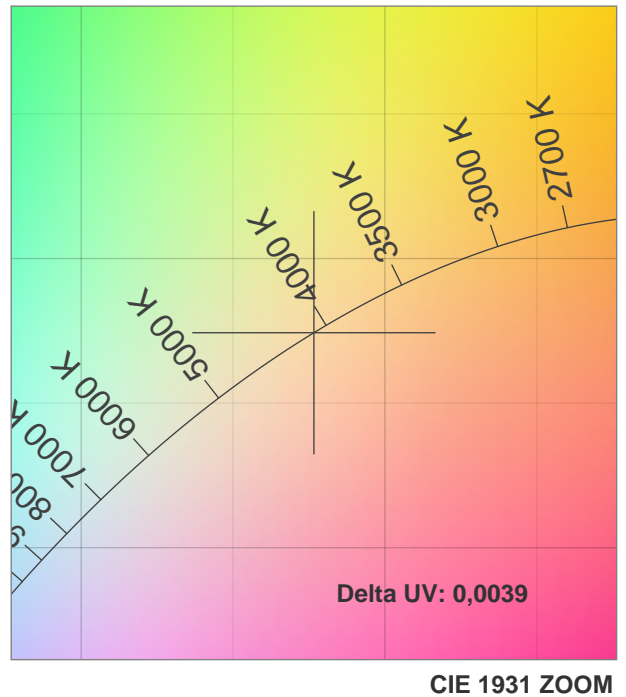
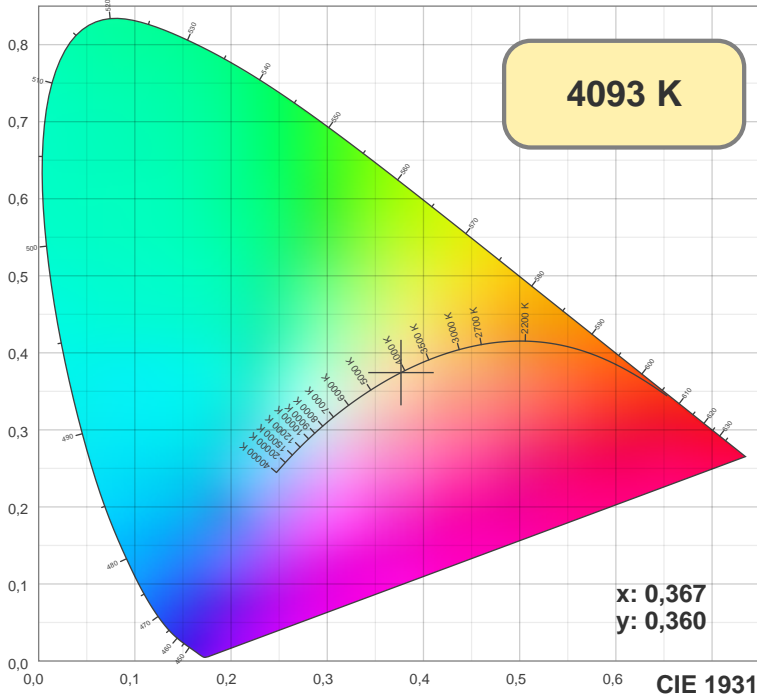
CIE1931

x: 0,367

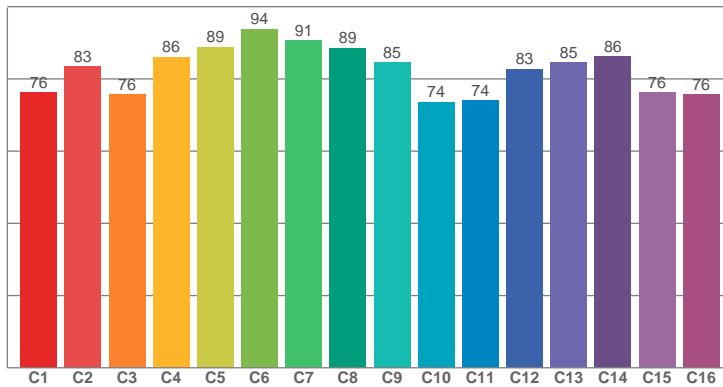
y: 0,360

Спектр

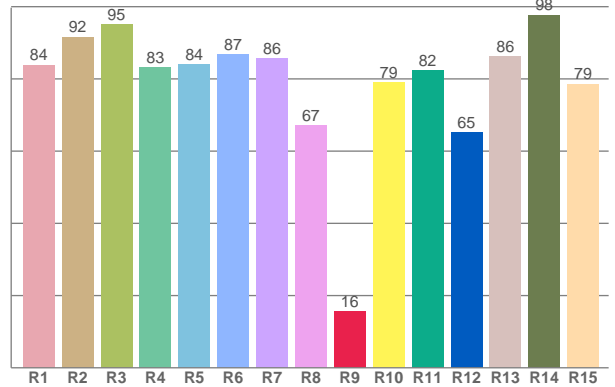




TM30: 82,3



CRI: 84,7 (R1-R8)



CRI R values, only R1-R8 are used to calculate final CRI value

R1	R2	R3	R4	R5	R6	R7	R8	R9	R10	R11	R12	R13	R14	R15
83,90	91,60	95,05	83,22	83,93	86,85	85,75	67,12	15,51	79,02	82,26	65,13	86,20	97,74	78,61

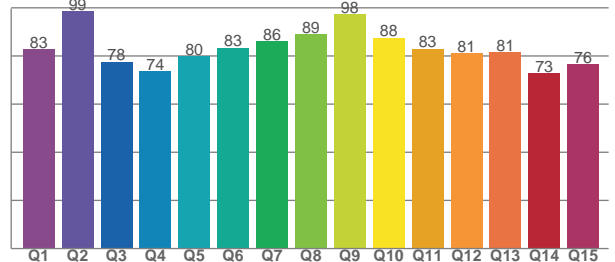
TM30 C values, 16 binned values out of total of 99 C values

C1	C2	C3	C4	C5	C6	C7	C8	C9	C10	C11	C12	C13	C14	C15	C16
76,30	83,47	75,64	86,05	88,85	93,84	90,60	88,60	84,64	73,62	73,98	82,79	84,65	86,29	76,32	75,75

CQS Q values

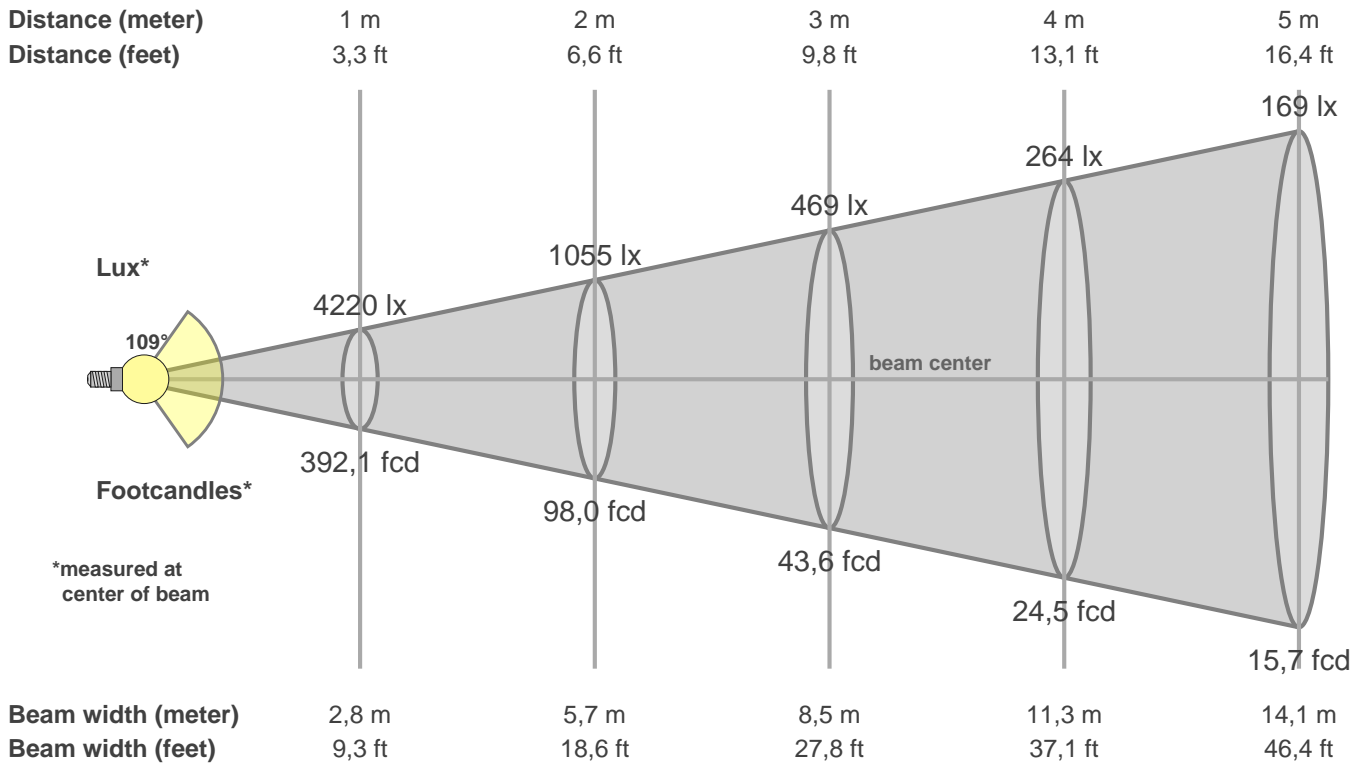
Q1	Q2	Q3	Q4	Q5	Q6	Q7	Q8	Q9	Q10	Q11	Q12	Q13	Q14	Q15
82,77	98,67	77,60	73,70	80,07	83,43	86,04	88,95	97,54	87,64	83,05	81,28	81,43	72,91	76,48

CQS: 81,9



Color parameters

CCT	CRI	CRI R9	TM30 Rf	TM30 Rg	CQS	x	y	u	v	Duv
4093 K	84,7	15,5	82,3	96,0	81,9	0,4	0,4	0,2	0,3	0,0039



Intensities in 0° c-plane

0°	5°	10°	15°	20°	25°	30°	35°	40°	45°	50°	55°	60°	65°	70°	75°	80°	85°	90°	95°
4220	4195	4150	4096	4063	4070	3973	3658	3265	2871	2423	1982	1588	1219	875	551	278	102	36	30
100%	99%	98%	97%	96%	96%	94%	87%	77%	68%	57%	47%	38%	29%	21%	13%	7%	2%	1%	1%

Intensities in 90° c-plane

0°	5°	10°	15°	20°	25°	30°	35°	40°	45°	50°	55°	60°	65°	70°	75°	80°	85°	90°	95°
4220	4208	4162	4080	3959	3804	3614	3394	3145	2861	2545	2187	1799	1393	968	574	266	86	32	30
100%	100%	99%	97%	94%	90%	86%	80%	75%	68%	60%	52%	43%	33%	23%	14%	6%	2%	1%	1%

Intensities in 180° c-plane

0°	5°	10°	15°	20°	25°	30°	35°	40°	45°	50°	55°	60°	65°	70°	75°	80°	85°	90°	95°
4220	4207	4182	4160	4170	4179	4005	3617	3228	2831	2384	1957	1566	1197	850	526	264	107	53	46
100%	100%	99%	99%	99%	99%	95%	86%	76%	67%	56%	46%	37%	28%	20%	12%	6%	3%	1%	1%

Intensities in 270° c-plane

0°	5°	10°	15°	20°	25°	30°	35°	40°	45°	50°	55°	60°	65°	70°	75°	80°	85°	90°	95°
4220	4203	4156	4068	3941	3774	3576	3346	3075	2780	2453	2082	1682	1258	834	474	212	82	51	47
100%	100%	98%	96%	93%	89%	85%	79%	73%	66%	58%	49%	40%	30%	20%	11%	5%	2%	1%	1%

Beam angle 50%	Field angle 10%	Cutoff angle 2,5%	Intensity ratio in 120° cone	Intensity ratio in 90° cone
109,5°	152,7°	168,7°	81,7%	56,9%