

Эффективность света:

**126 Lumen/Watt**

Качество света:

**CRI: 83,1**

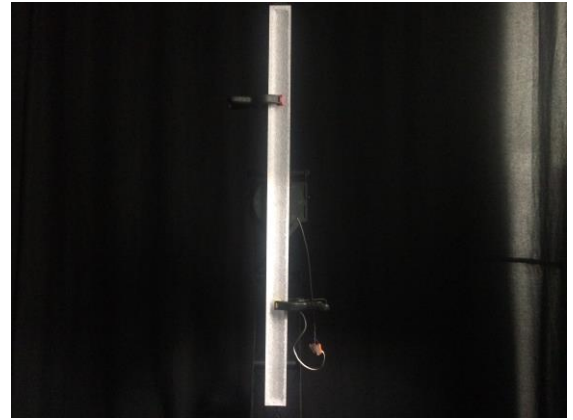
Цветовая температура:

**4133 K**

**Поток: 2911 lm**  
**Интенс.: 1475 cd**

**Мощн.: 23,2 W**  
**КПД: 0,92**

4 PLANES



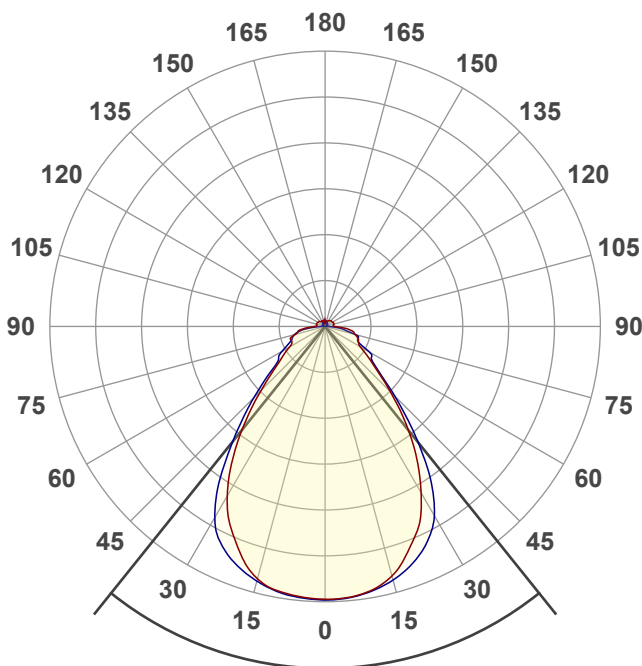
Название продукта:

**ViLED CC**

**08-У-С-24-1194.69.29-4-0-65**

Дата и время:

**08.08.2018 14:53:40**



Угол пучка

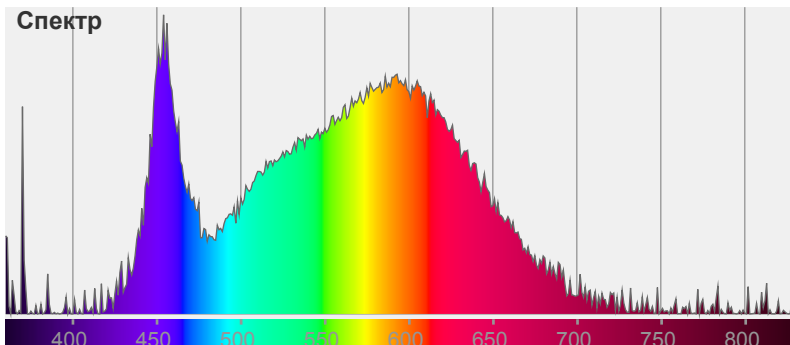
**77,5°**

Цвет



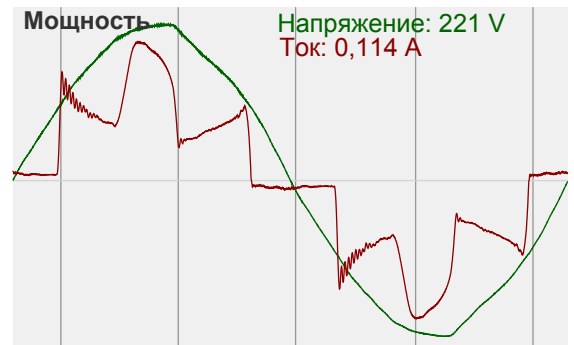
CIE1931  
x: 0,375  
y: 0,374

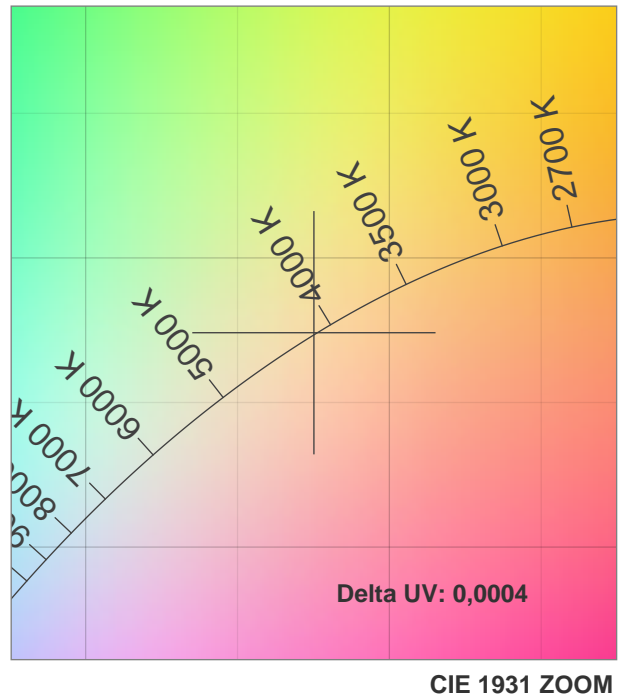
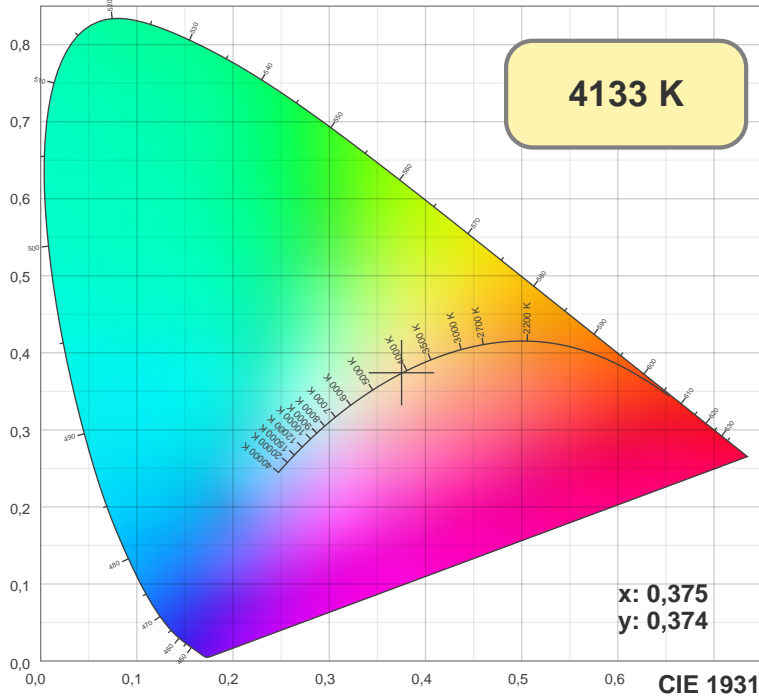
Спектр



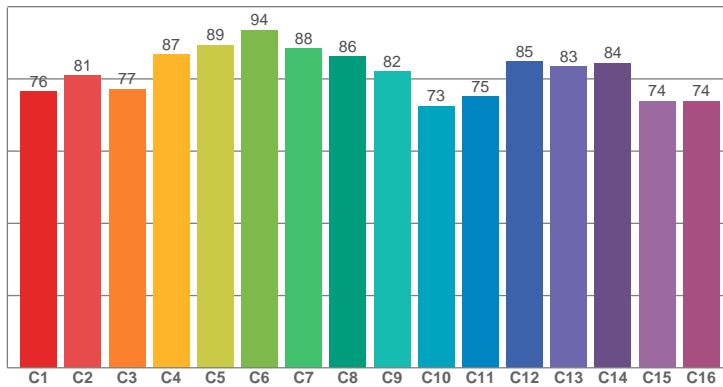
Мощность

Напряжение: 221 V  
Ток: 0,114 A

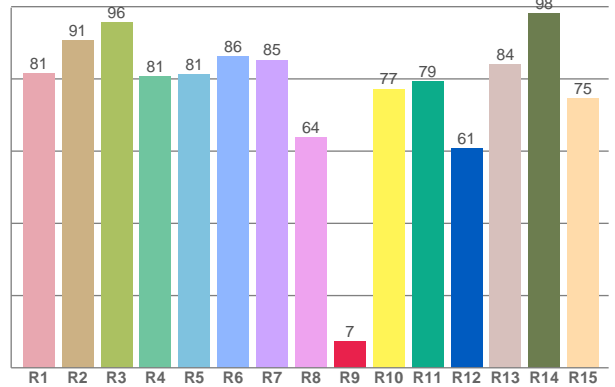




TM30: 81,6



CRI: 83,1 (R1-R8)



CRI R values, only R1-R8 are used to calculate final CRI value

R1	R2	R3	R4	R5	R6	R7	R8	R9	R10	R11	R12	R13	R14	R15
81,43	90,65	95,63	80,61	81,19	86,29	85,24	63,75	7,29	77,22	79,36	60,80	84,08	98,07	74,67

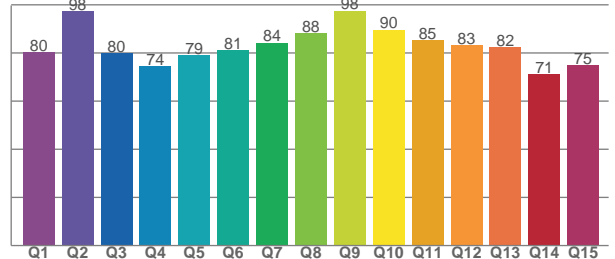
TM30 C values, 16 binned values out of total of 99 C values

C1	C2	C3	C4	C5	C6	C7	C8	C9	C10	C11	C12	C13	C14	C15	C16
76,44	81,00	77,21	86,80	89,39	93,55	88,37	86,25	82,02	72,55	75,13	84,82	83,40	84,44	73,86	73,89

CQS Q values

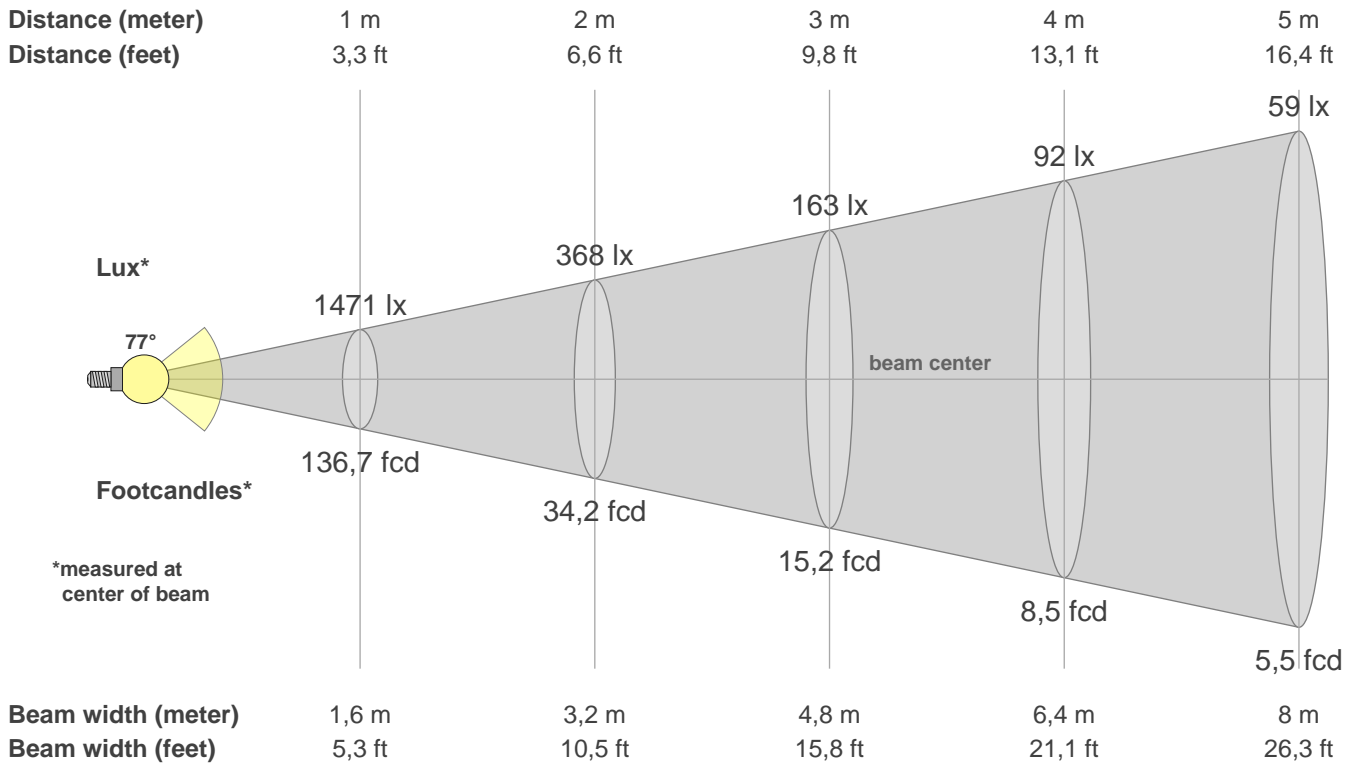
Q1	Q2	Q3	Q4	Q5	Q6	Q7	Q8	Q9	Q10	Q11	Q12	Q13	Q14	Q15
80,42	97,50	79,81	74,40	78,97	81,29	84,28	88,33	97,58	89,70	85,25	83,30	82,49	71,25	74,79

CQS: 81,7



Color parameters

CCT	CRI	CRI R9	TM30 Rf	TM30 Rg	CQS	x	y	u	v	Duv
4133 K	83,1	7,3	81,6	93,7	81,7	0,4	0,4	0,2	0,3	0,0004



**Intensities in 0° c-plane**

0°	5°	10°	15°	20°	25°	30°	35°	40°	45°	50°	55°	60°	65°	70°	75°	80°	85°	90°	95°
1471	1464	1441	1389	1296	1188	1034	857	673	500	365	281	219	199	190	167	151	108	52	45
100%	100%	98%	94%	88%	81%	70%	58%	46%	34%	25%	19%	15%	14%	13%	11%	10%	7%	4%	3%

**Intensities in 90° c-plane**

0°	5°	10°	15°	20°	25°	30°	35°	40°	45°	50°	55°	60°	65°	70°	75°	80°	85°	90°	95°
1471	1468	1448	1415	1364	1291	1178	983	744	534	381	307	275	201	187	167	106	62	21	12
100%	100%	98%	96%	93%	88%	80%	67%	51%	36%	26%	21%	19%	14%	13%	11%	7%	4%	1%	1%

**Intensities in 180° c-plane**

0°	5°	10°	15°	20°	25°	30°	35°	40°	45°	50°	55°	60°	65°	70°	75°	80°	85°	90°	95°
1471	1462	1445	1403	1314	1197	1051	866	670	494	361	280	225	200	197	168	146	106	57	47
100%	99%	98%	95%	89%	81%	71%	59%	46%	34%	25%	19%	15%	14%	13%	11%	10%	7%	4%	3%

**Intensities in 270° c-plane**

0°	5°	10°	15°	20°	25°	30°	35°	40°	45°	50°	55°	60°	65°	70°	75°	80°	85°	90°	95°
1471	1468	1452	1420	1373	1304	1182	977	744	548	396	310	268	217	189	169	133	75	25	10
100%	100%	99%	97%	93%	89%	80%	66%	51%	37%	27%	21%	18%	15%	13%	11%	9%	5%	2%	1%

Beam angle 50%	Field angle 10%	Cutoff angle 2,5%	Intensity ratio in 120° cone	Intensity ratio in 90° cone
77,5°	148,9°	218,7°	78,9%	64,7%