

Эффективность света:

130 Lumen/Watt

Качество света:

CRI: 83,1

Цветовая температура:

4167 K

Поток: 2999 lm

Интенс.: 1340 cd

Мощн.: 23,1 W

КПД: 0,91

4 PLANES



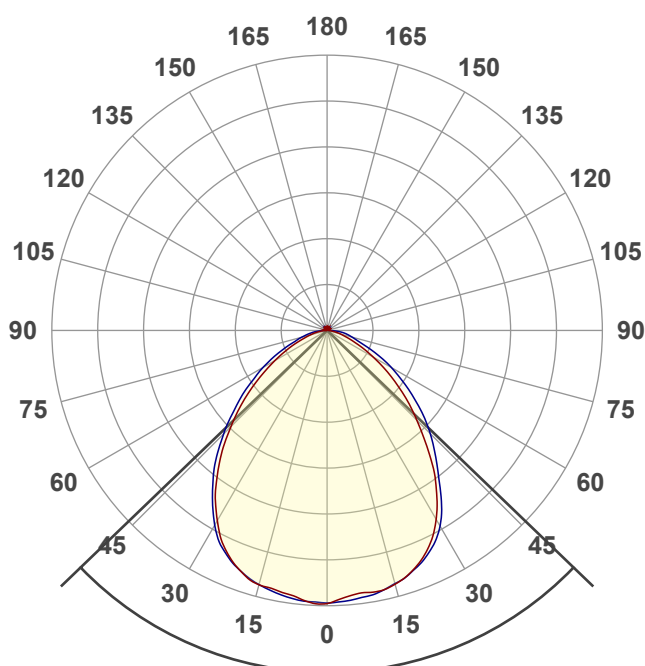
Название продукта:

ViLED CC

08-P-A-24-1204.73.40-4-0-65

Дата и время:

28.08.2018 11:07:11



Угол пучка

92,2°

Цвет

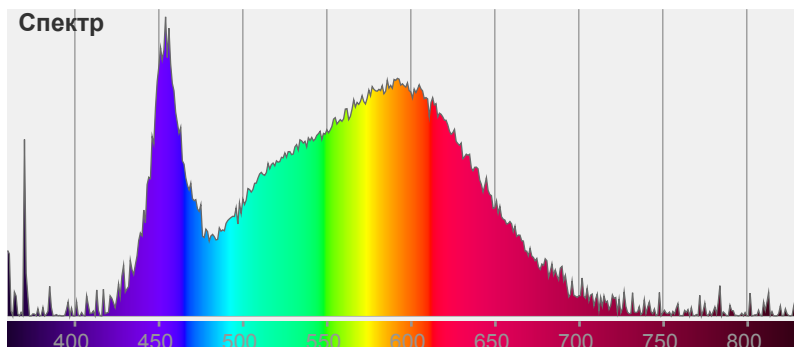


CIE1931

x: 0,374

y: 0,373

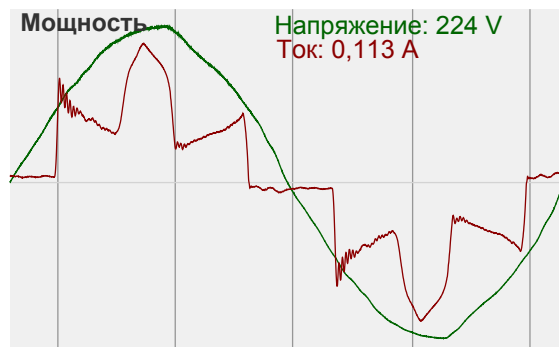
Спектр

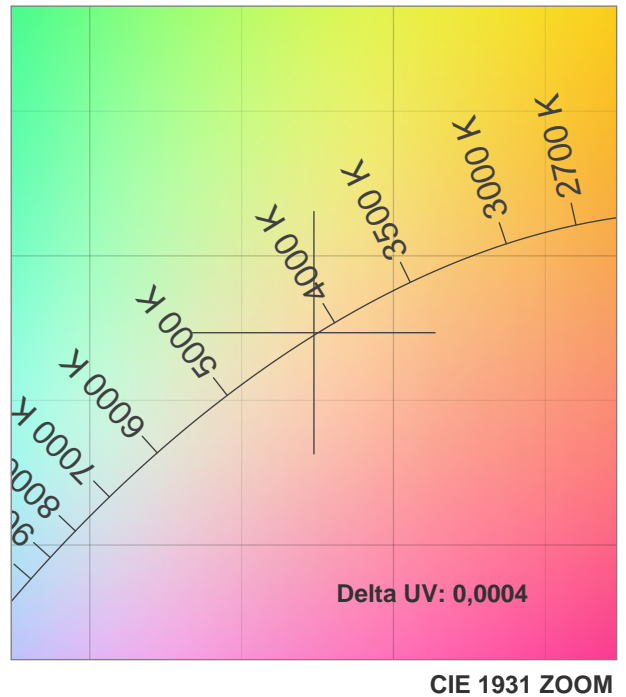
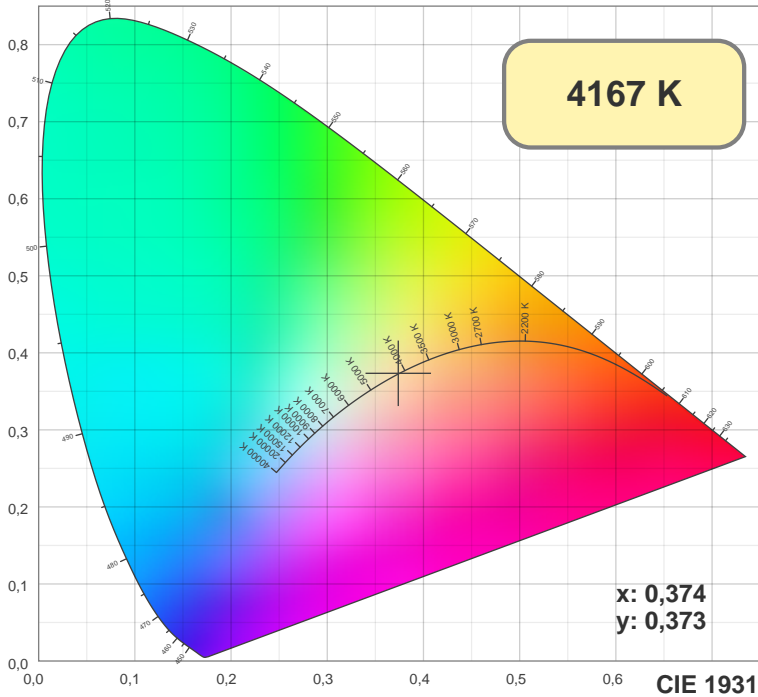


Мощность

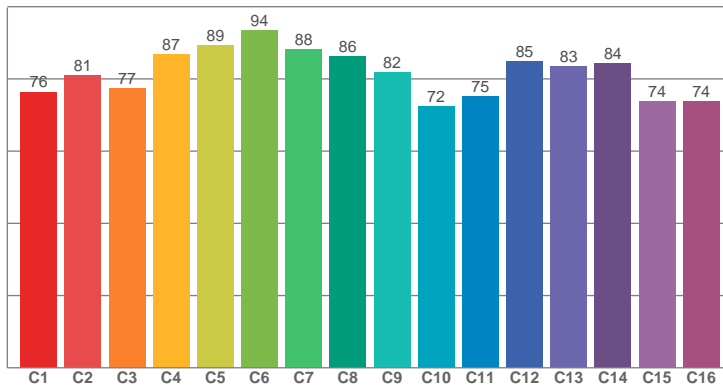
Напряжение: 224 V

Ток: 0,113 A

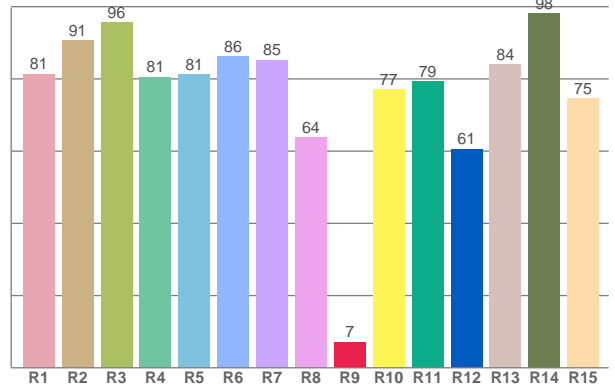




TM30: 81,5



CRI: 83,1 (R1-R8)



CRI R values, only R1-R8 are used to calculate final CRI value

R1	R2	R3	R4	R5	R6	R7	R8	R9	R10	R11	R12	R13	R14	R15
81,40	90,63	95,61	80,57	81,15	86,22	85,28	63,80	7,12	77,15	79,30	60,61	84,06	98,06	74,65

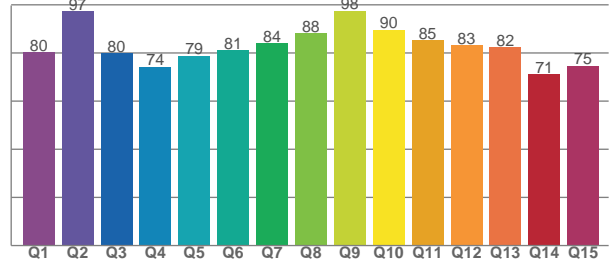
TM30 C values, 16 binned values out of total of 99 C values

C1	C2	C3	C4	C5	C6	C7	C8	C9	C10	C11	C12	C13	C14	C15	C16
76,38	81,00	77,29	86,79	89,36	93,51	88,26	86,15	81,88	72,44	75,05	84,82	83,39	84,37	73,78	73,78

CQS Q values

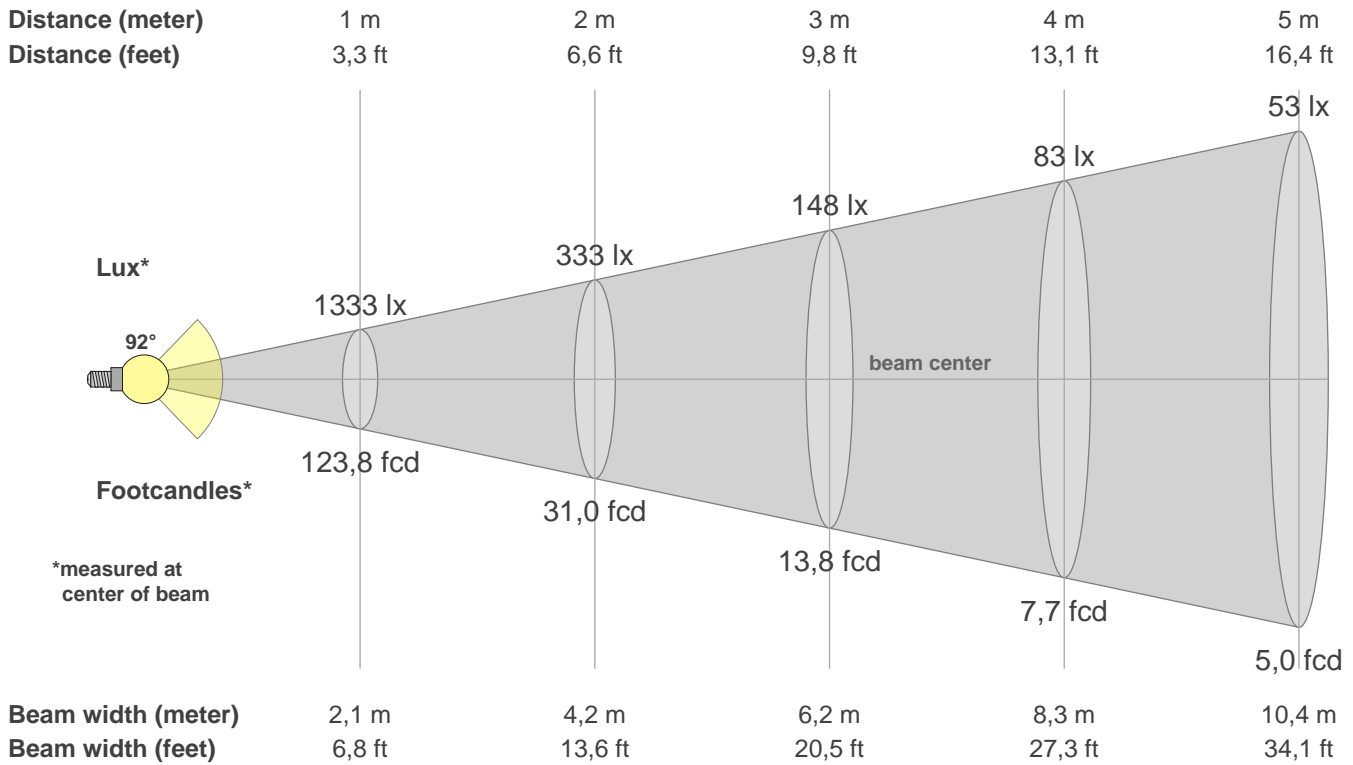
Q1	Q2	Q3	Q4	Q5	Q6	Q7	Q8	Q9	Q10	Q11	Q12	Q13	Q14	Q15
80,38	97,49	79,81	74,30	78,87	81,18	84,24	88,35	97,57	89,71	85,23	83,29	82,48	71,19	74,75

CQS: 81,7



Color parameters

CCT	CRI	CRI R9	TM30 Rf	TM30 Rg	CQS	x	y	u	v	Duv
4167 K	83,1	7,1	81,5	93,7	81,7	0,4	0,4	0,2	0,3	0,0004



Intensities in 0° c-plane

0°	5°	10°	15°	20°	25°	30°	35°	40°	45°	50°	55°	60°	65°	70°	75°	80°	85°	90°	95°
1333	1302	1299	1284	1241	1171	1066	929	772	621	491	369	261	174	110	69	37	15	8	8
100%	98%	97%	96%	93%	88%	80%	70%	58%	47%	37%	28%	20%	13%	8%	5%	3%	1%	1%	1%

Intensities in 90° c-plane

0°	5°	10°	15°	20°	25°	30°	35°	40°	45°	50°	55°	60°	65°	70°	75°	80°	85°	90°	95°
1333	1324	1311	1281	1244	1189	1103	968	831	713	592	471	363	260	174	127	94	53	14	9
100%	99%	98%	96%	93%	89%	83%	73%	62%	53%	44%	35%	27%	20%	13%	10%	7%	4%	1%	1%

Intensities in 180° c-plane

0°	5°	10°	15°	20°	25°	30°	35°	40°	45°	50°	55°	60°	65°	70°	75°	80°	85°	90°	95°
1333	1324	1298	1286	1247	1178	1073	950	810	665	531	404	295	206	134	85	52	22	10	9
100%	99%	97%	97%	94%	88%	81%	71%	61%	50%	40%	30%	22%	15%	10%	6%	4%	2%	1%	1%

Intensities in 270° c-plane

0°	5°	10°	15°	20°	25°	30°	35°	40°	45°	50°	55°	60°	65°	70°	75°	80°	85°	90°	95°
1333	1328	1311	1286	1247	1189	1098	977	853	715	584	466	361	265	183	130	88	48	14	11
100%	100%	98%	96%	94%	89%	82%	73%	64%	54%	44%	35%	27%	20%	14%	10%	7%	4%	1%	1%

Beam angle 50%	Field angle 10%	Cutoff angle 2,5%	Intensity ratio in 120° cone	Intensity ratio in 90° cone
92,2°	142,7°	168,5°	85,4%	63,8%