

Эффективность света:

128 Lumen/Watt

Качество света:

CRI: 83,1

Цветовая температура:

4171 K

Поток: 2952 lm

Интенс.: 1259 cd

Мощн.: 23,1 W

КПД: 0,91

4 PLANES



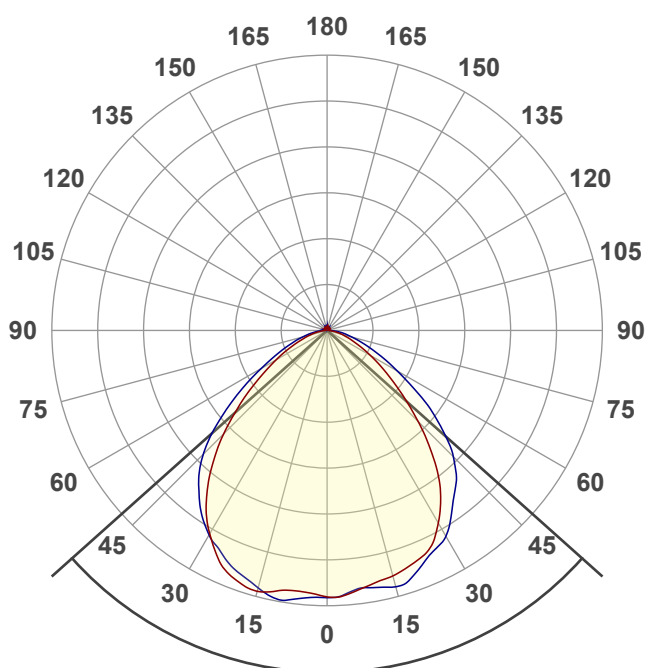
Название продукта:

ViLED CC

08-P-K-24-1204.73.40-4-0-65

Дата и время:

28.08.2018 12:17:52



Угол пучка

96,4°

Цвет

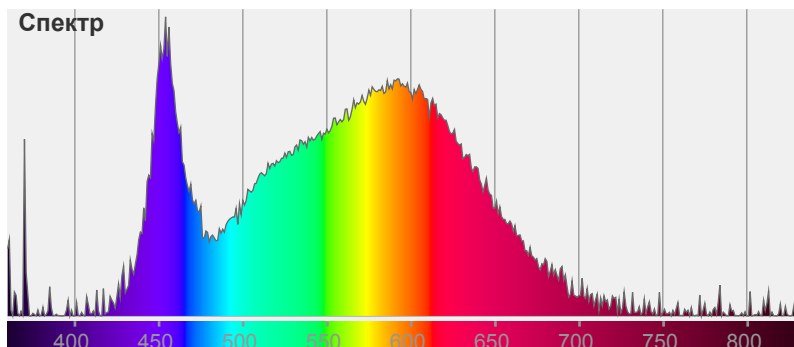


CIE1931

x: 0,374

y: 0,373

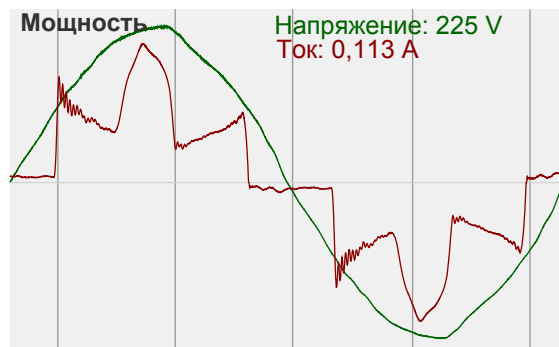
Спектр

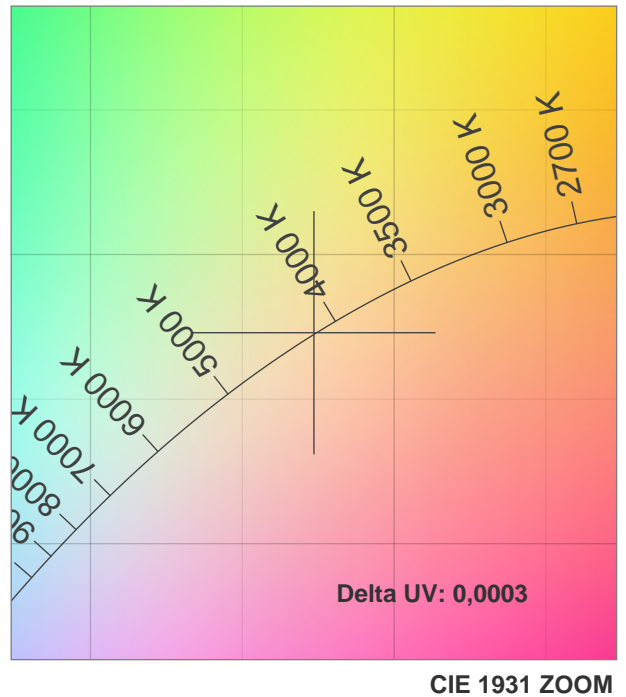
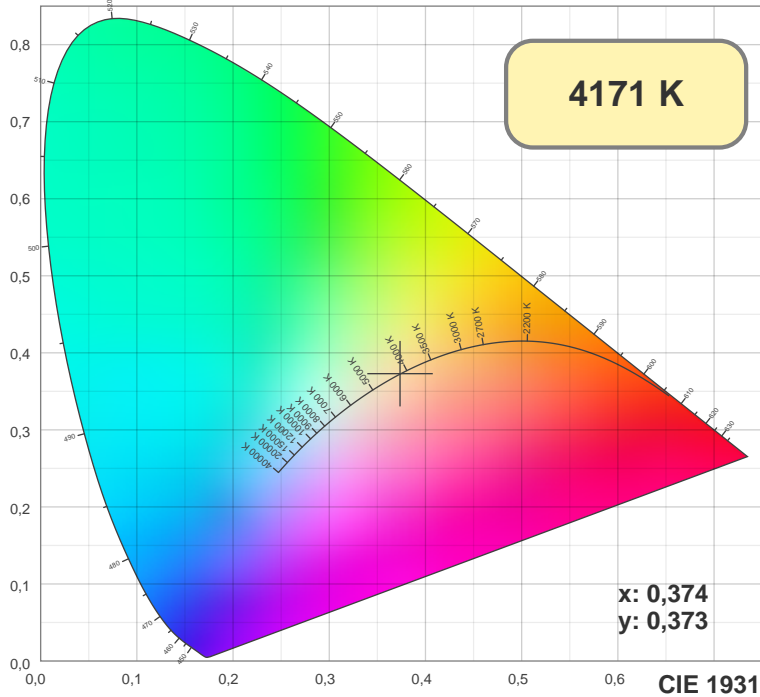


Мощность

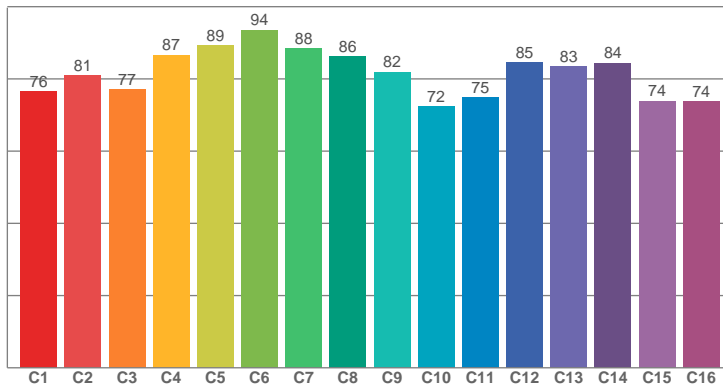
Напряжение: 225 V

Ток: 0,113 A

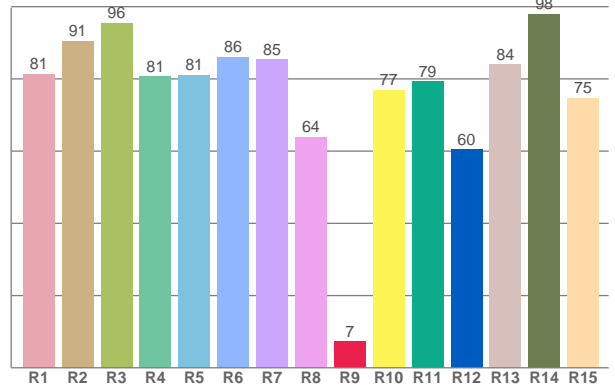




TM30: 81,5



CRI: 83,1 (R1-R8)



CRI R values, only R1-R8 are used to calculate final CRI value

R1	R2	R3	R4	R5	R6	R7	R8	R9	R10	R11	R12	R13	R14	R15
81,39	90,54	95,53	80,61	81,14	86,06	85,34	63,93	7,33	76,91	79,32	60,44	84,02	98,00	74,72

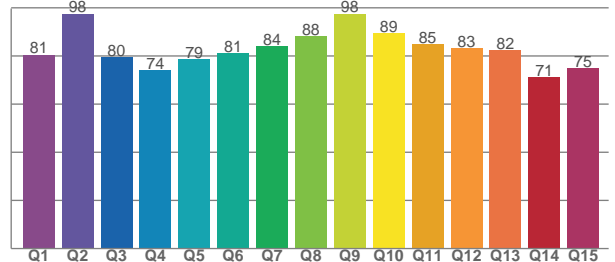
TM30 C values, 16 binned values out of total of 99 C values

C1	C2	C3	C4	C5	C6	C7	C8	C9	C10	C11	C12	C13	C14	C15	C16
76,44	80,94	77,06	86,65	89,29	93,53	88,37	86,23	81,96	72,34	74,81	84,62	83,49	84,43	73,88	73,82

CQS Q values

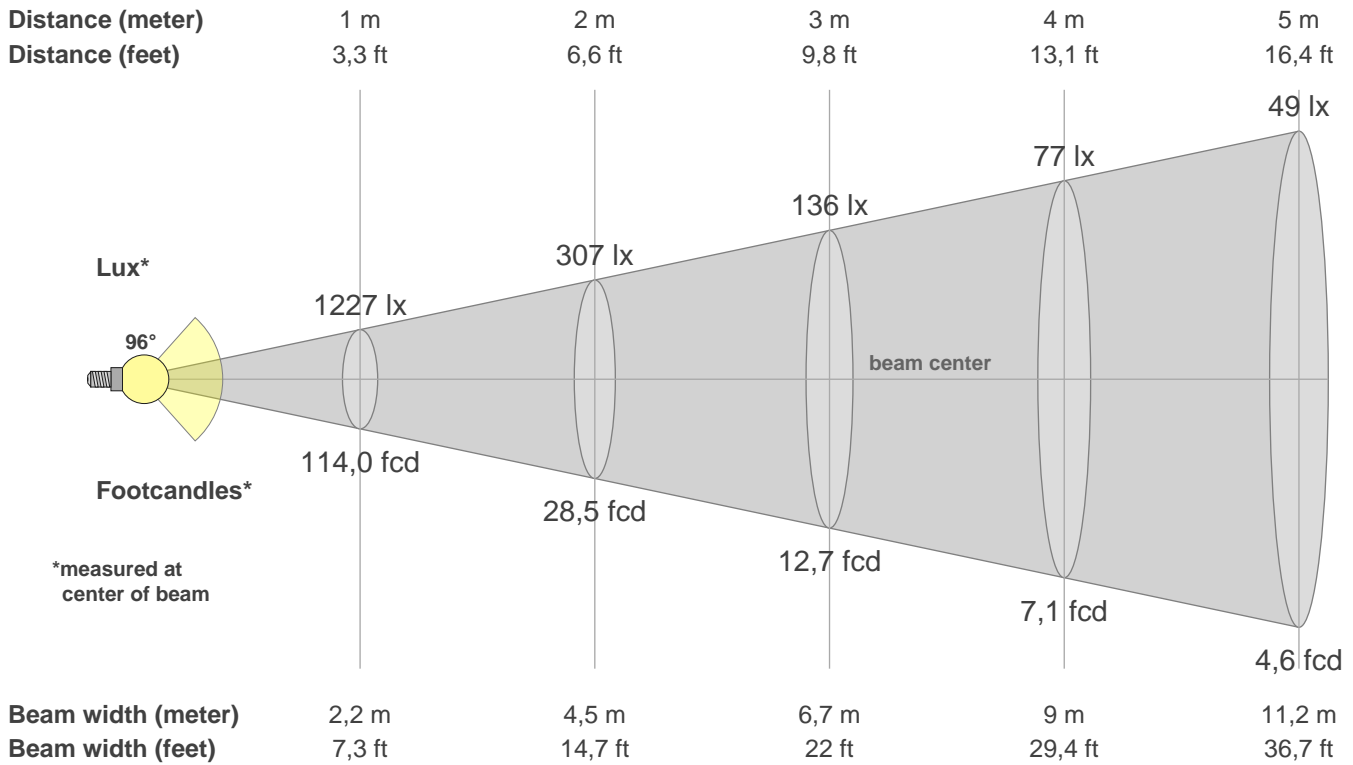
Q1	Q2	Q3	Q4	Q5	Q6	Q7	Q8	Q9	Q10	Q11	Q12	Q13	Q14	Q15
80,51	97,60	79,51	74,09	78,80	81,18	84,24	88,31	97,58	89,50	85,03	83,13	82,38	71,22	74,80

CQS: 81,6



Color parameters

CCT	CRI	CRI R9	TM30 Rf	TM30 Rg	CQS	x	y	u	v	Duv
4171 K	83,1	7,3	81,5	93,8	81,6	0,4	0,4	0,2	0,3	0,0003



Intensities in 0° c-plane

0°	5°	10°	15°	20°	25°	30°	35°	40°	45°	50°	55°	60°	65°	70°	75°	80°	85°	90°	95°
1227	1215	1186	1169	1144	1110	1023	909	759	593	443	324	231	158	109	72	41	14	9	10
100%	99%	97%	95%	93%	90%	83%	74%	62%	48%	36%	26%	19%	13%	9%	6%	3%	1%	1%	1%

Intensities in 90° c-plane

0°	5°	10°	15°	20°	25°	30°	35°	40°	45°	50°	55°	60°	65°	70°	75°	80°	85°	90°	95°
1227	1208	1202	1220	1189	1133	1092	1004	922	821	679	522	374	264	181	119	79	40	9	10
100%	98%	98%	99%	97%	92%	89%	82%	75%	67%	55%	43%	30%	22%	15%	10%	6%	3%	1%	1%

Intensities in 180° c-plane

0°	5°	10°	15°	20°	25°	30°	35°	40°	45°	50°	55°	60°	65°	70°	75°	80°	85°	90°	95°
1227	1208	1215	1242	1223	1171	1080	969	828	673	517	379	272	188	123	80	48	23	9	9
100%	98%	99%	101%	100%	95%	88%	79%	67%	55%	42%	31%	22%	15%	10%	7%	4%	2%	1%	1%

Intensities in 270° c-plane

0°	5°	10°	15°	20°	25°	30°	35°	40°	45°	50°	55°	60°	65°	70°	75°	80°	85°	90°	95°
1227	1236	1257	1227	1187	1139	1086	1012	919	805	651	491	351	248	173	117	76	43	14	11
100%	101%	102%	100%	97%	93%	88%	82%	75%	66%	53%	40%	29%	20%	14%	9%	6%	4%	1%	1%

Beam angle 50%	Field angle 10%	Cutoff angle 2,5%	Intensity ratio in 120° cone	Intensity ratio in 90° cone
96,4°	143,6°	168,5°	85,7%	64,1%