

СЕВЕРО-ЗАПАДНАЯ СВЕТОТЕХНИЧЕСКАЯ ЛАБОРАТОРИЯ

Эффективность света:

129 Lumen/Watt

Качество света:

CRI: 84,5

Цветовая температура:

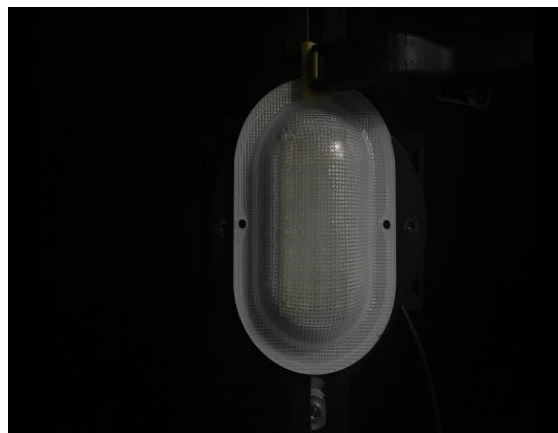
4238 K

Поток: 997 lm

Интенс.: 357 cd

Мощн.: 7,7 W

КПД: 0,84



Название продукта:

СС 05-Н-С-8-175.110.27-4-0-54

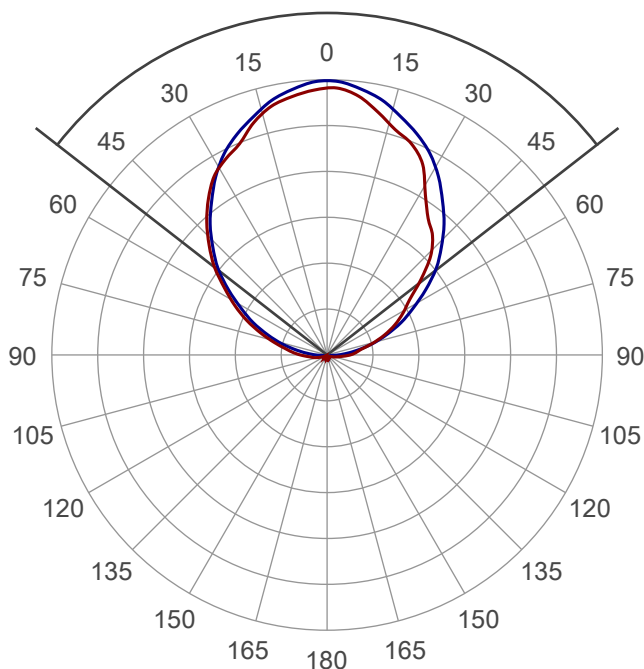
Дата и время:

09.06.2017 9:47:51

Угол пучка

104,2°

4 PLANES

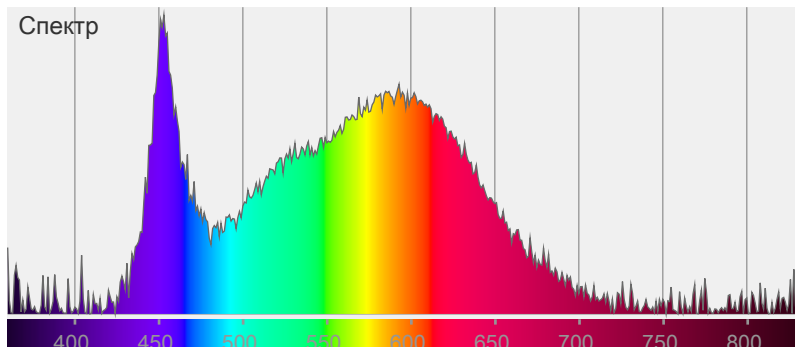


Цвет



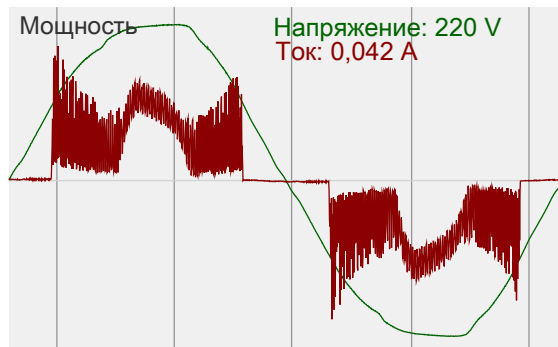
CIE1931
x: 0,369
y: 0,365

Спектр

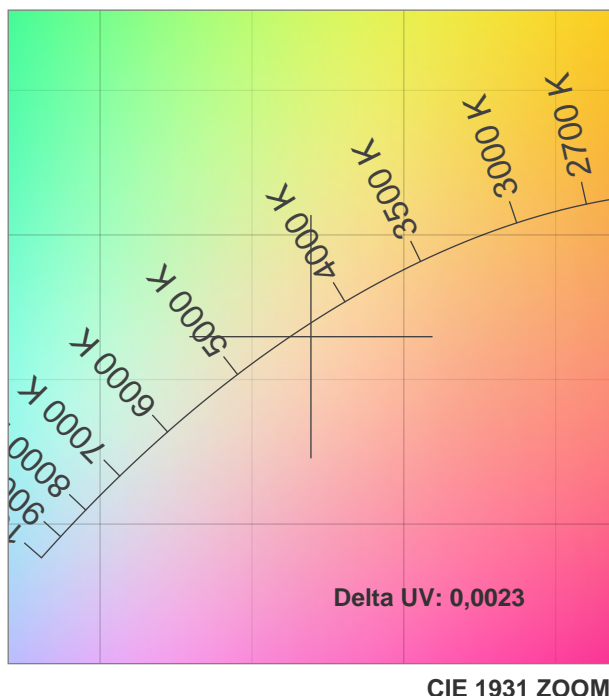
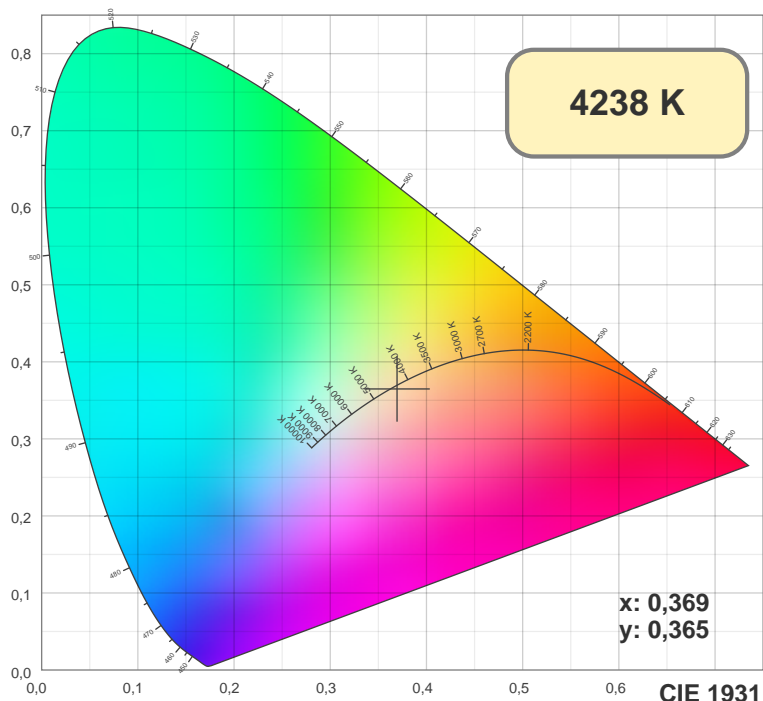


Мощность

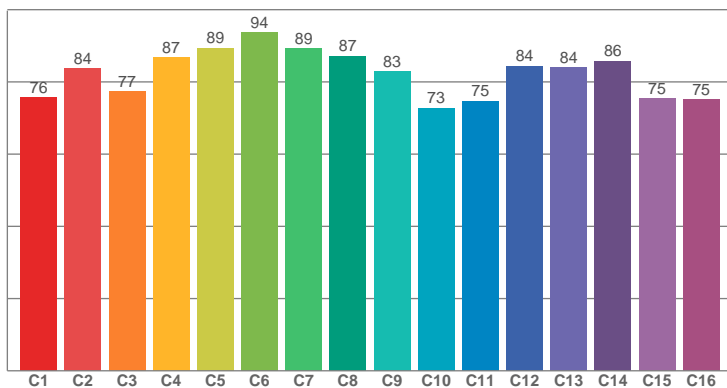
Напряжение: 220 V
Ток: 0,042 A



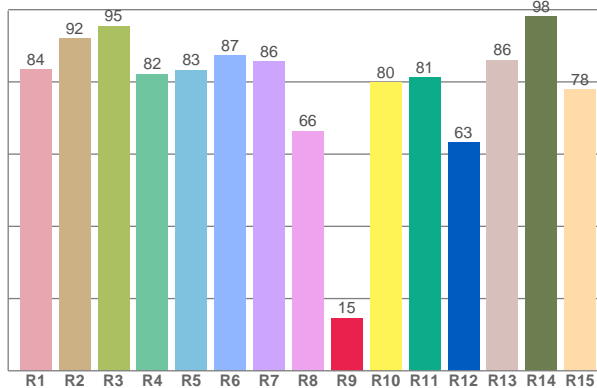
СЕВЕРО-ЗАПАДНАЯ СВЕТОТЕХНИЧЕСКАЯ ЛАБОРАТОРИЯ



TM30: 82,2



CRI: 84,5 (R1-R8)



CRI R values, only R1-R8 are used to calculate final CRI value

R1	R2	R3	R4	R5	R6	R7	R8	R9	R10	R11	R12	R13	R14	R15
83,55	91,99	95,49	82,25	83,31	87,42	85,57	66,42	14,66	79,88	81,16	63,27	86,12	98,13	77,83

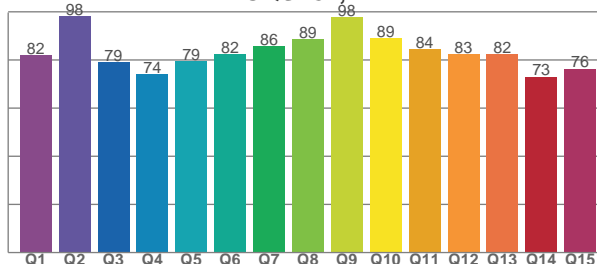
TM30 C values, 16 binned values out of total of 99 C values

C1	C2	C3	C4	C5	C6	C7	C8	C9	C10	C11	C12	C13	C14	C15	C16
75,67	83,65	77,46	86,82	89,44	93,78	89,23	87,23	82,91	72,78	74,74	84,39	84,05	85,80	75,35	75,08

CQS Q values

Q1	Q2	Q3	Q4	Q5	Q6	Q7	Q8	Q9	Q10	Q11	Q12	Q13	Q14	Q15
81,93	98,07	79,03	74,06	79,49	82,46	85,61	88,81	97,80	89,09	84,44	82,54	82,29	73,06	76,39

CQS: 82,2



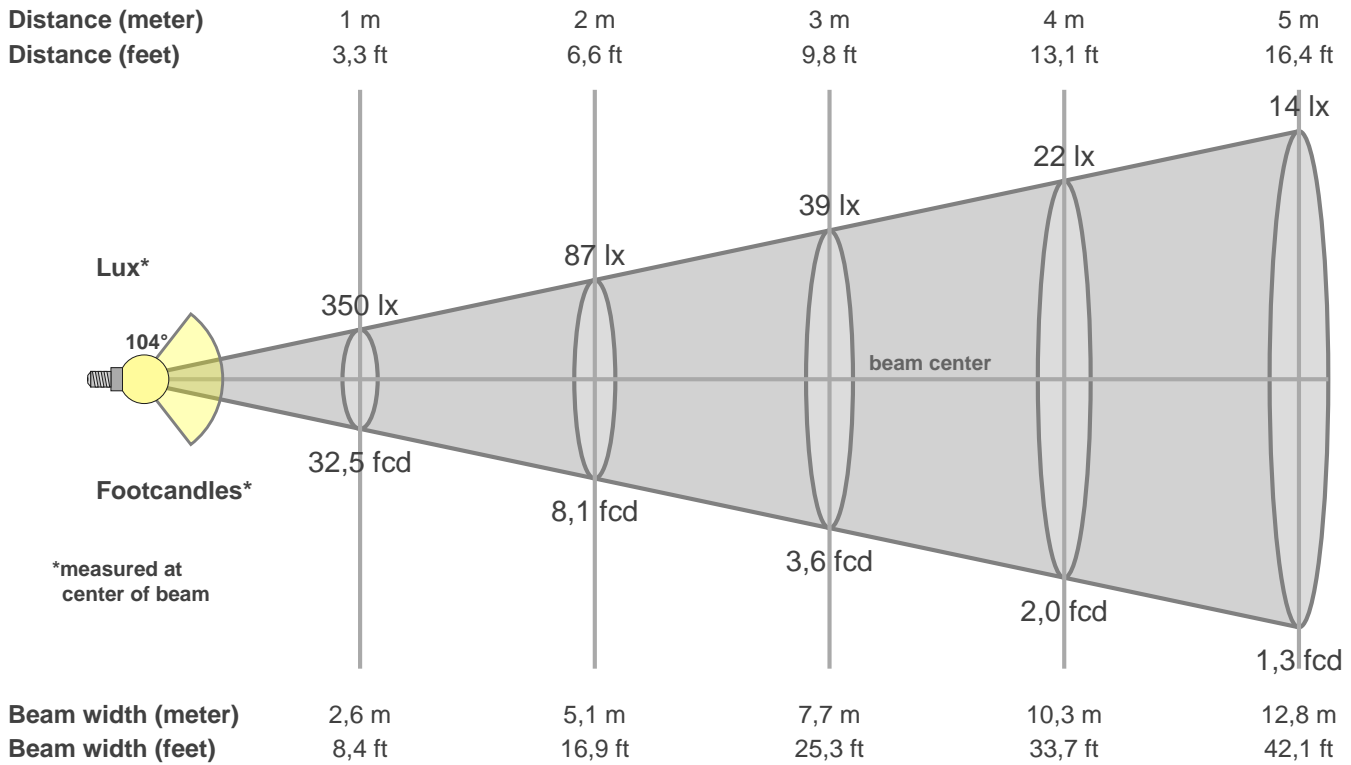
Color parameters

CCT	CRI	CRI R9	TM30 Rf	TM30 Rg	CQS	x	y	u	v	Duv
4238 K	84,5	14,7	82,2	94,8	82,2	0,4	0,4	0,2	0,3	0,0023

СЕВЕРО-ЗАПАДНАЯ СВЕТОТЕХНИЧЕСКАЯ ЛАБОРАТОРИЯ

Beam details

3 of 3



Intensities in 0° c-plane

0°	5°	10°	15°	20°	25°	30°	35°	40°	45°	50°	55°	60°	65°	70°	75°	80°	85°	90°	95°
350	343	337	325	308	293	281	265	244	220	196	170	145	122	99	78	60	47	35	25
100%	98%	96%	93%	88%	84%	80%	76%	70%	63%	56%	49%	42%	35%	28%	22%	17%	13%	10%	7%

Intensities in 90° c-plane

0°	5°	10°	15°	20°	25°	30°	35°	40°	45°	50°	55°	60°	65°	70°	75°	80°	85°	90°	95°
350	353	344	332	317	302	283	260	237	213	189	163	136	112	88	66	45	27	15	7
100%	101%	98%	95%	91%	86%	81%	74%	68%	61%	54%	47%	39%	32%	25%	19%	13%	8%	4%	2%

Intensities in 180° c-plane

0°	5°	10°	15°	20°	25°	30°	35°	40°	45°	50°	55°	60°	65°	70°	75°	80°	85°	90°	95°
350	343	330	313	300	284	256	229	212	192	164	136	117	100	82	64	47	38	30	20
100%	98%	94%	90%	86%	81%	73%	65%	61%	55%	47%	39%	33%	29%	24%	18%	13%	11%	9%	6%

Intensities in 270° c-plane

0°	5°	10°	15°	20°	25°	30°	35°	40°	45°	50°	55°	60°	65°	70°	75°	80°	85°	90°	95°
350	353	344	332	317	302	283	260	237	213	189	163	136	112	88	66	45	27	15	7
100%	101%	98%	95%	91%	86%	81%	74%	68%	61%	54%	47%	39%	32%	25%	19%	13%	8%	4%	2%

Beam angle 50%	Field angle 10%	Cutoff angle 2,5%	Intensity ratio in 120° cone	Intensity ratio in 90° cone
104,2°	172,2°	204,0°	72,3%	49,9%