

Эффективность света:

**111 Lumen/Watt**

Качество света:

**CRI: 83,8**

Цветовая температура:

**4037 K**

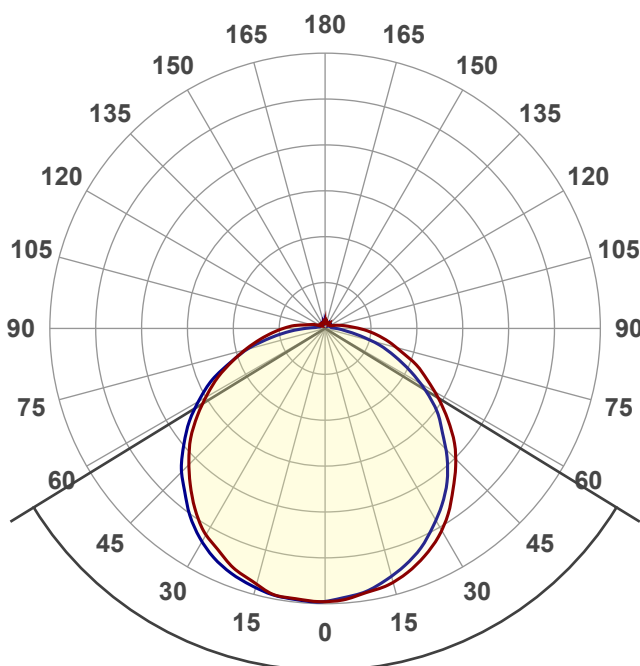
**Поток: 836 lm**

**Интенс.: 252 cd**

**Мощн.: 7,5 W**

**КПД: 0,80**

4 PLANES



Угол пучка

**116,9°**

Цвет

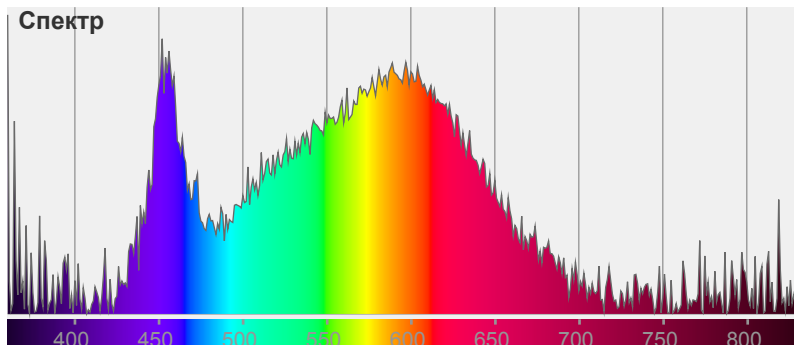


CIE1931

x: 0,379

y: 0,374

Спектр



Название продукта:

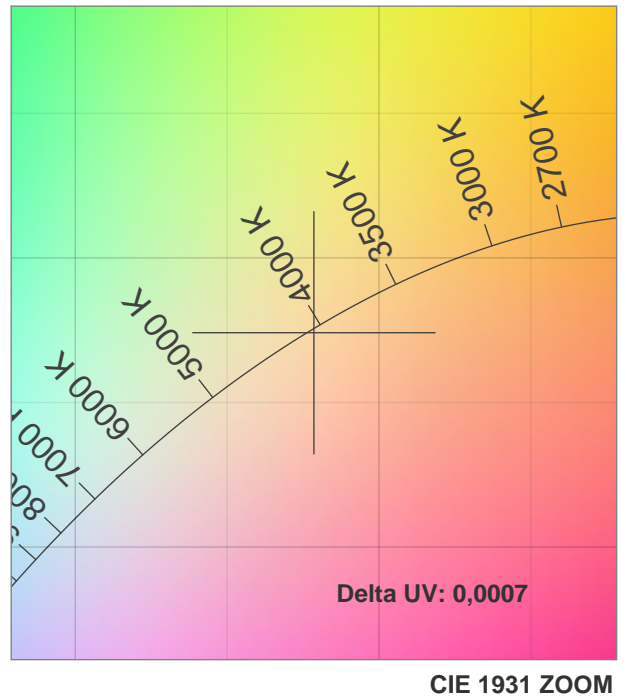
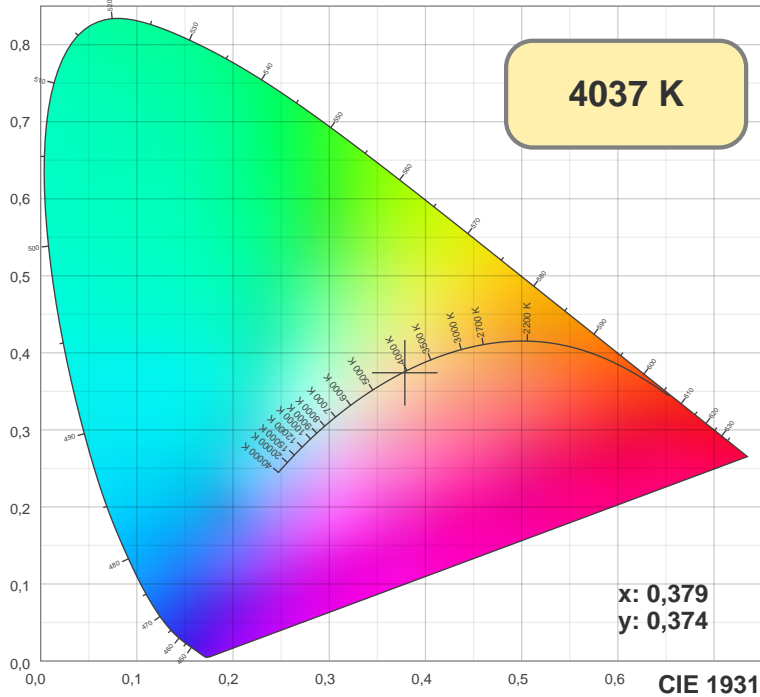
**VILED CC**

**05-H-M-8-175.110.27-4-0-54**

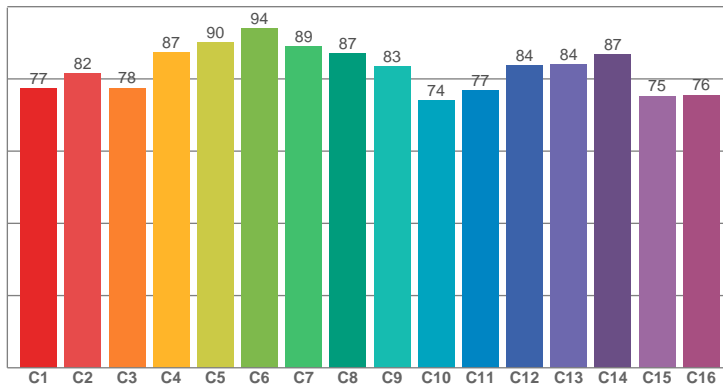
Дата и время:

**07.02.2018 11:12:28**

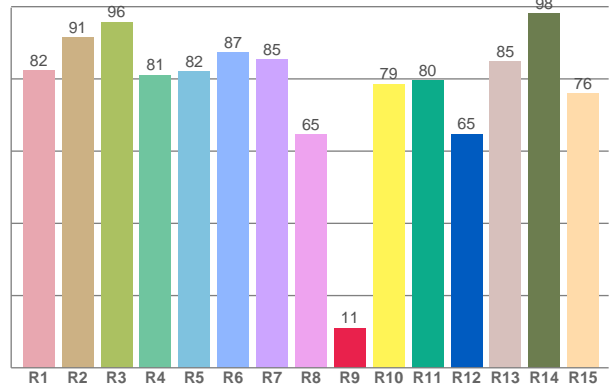




TM30: 82,5



CRI: 83,8 (R1-R8)



CRI R values, only R1-R8 are used to calculate final CRI value

R1	R2	R3	R4	R5	R6	R7	R8	R9	R10	R11	R12	R13	R14	R15
82,31	91,41	95,78	81,14	82,11	87,36	85,30	64,69	11,05	78,63	79,50	64,79	84,93	98,14	76,02

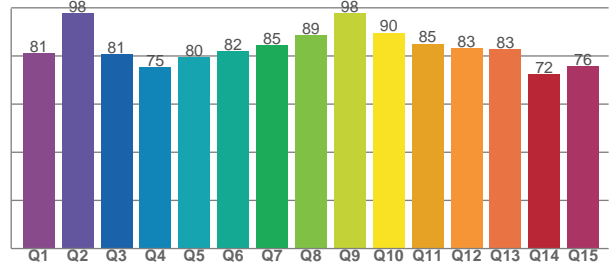
TM30 C values, 16 binned values out of total of 99 C values

C1	C2	C3	C4	C5	C6	C7	C8	C9	C10	C11	C12	C13	C14	C15	C16
77,43	81,51	77,53	87,29	90,17	93,91	88,91	87,06	83,36	74,07	76,84	83,76	83,99	86,79	75,31	75,54

CQS Q values

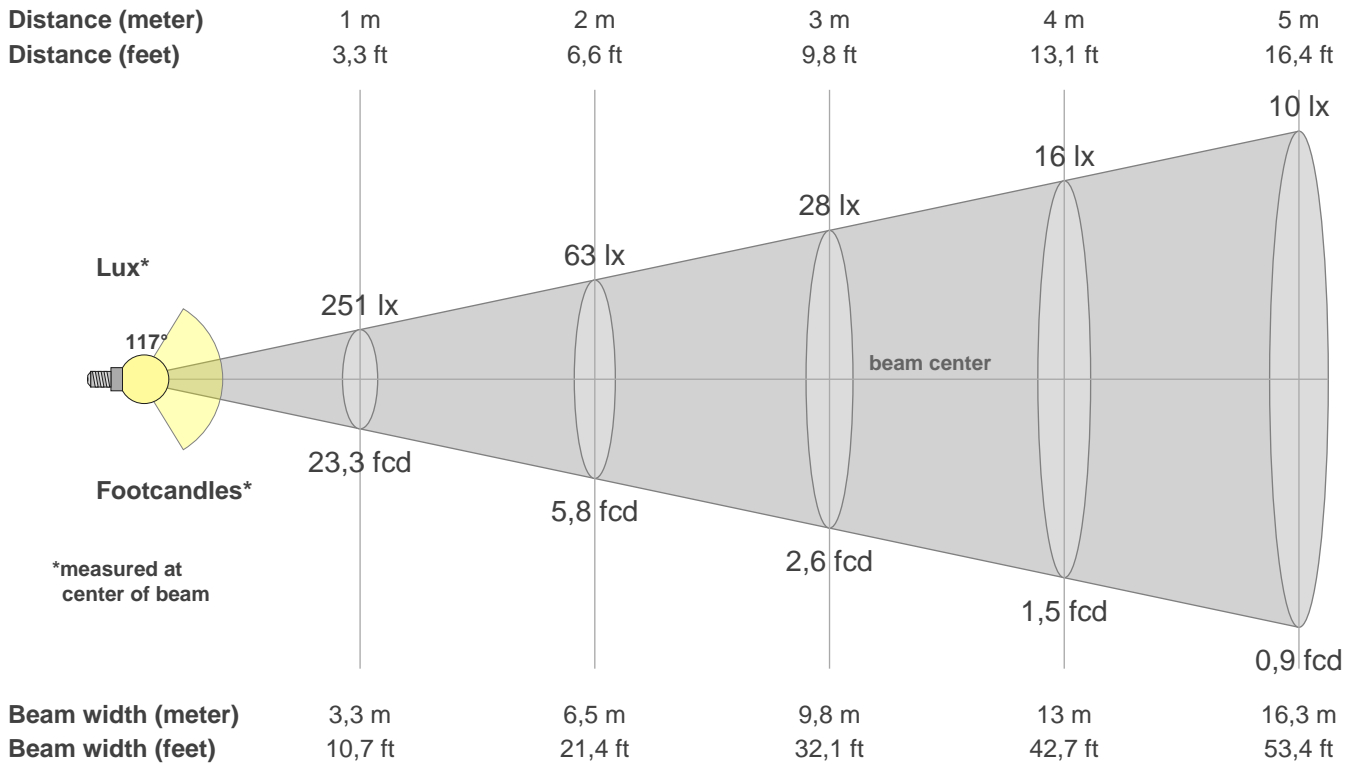
Q1	Q2	Q3	Q4	Q5	Q6	Q7	Q8	Q9	Q10	Q11	Q12	Q13	Q14	Q15
81,23	97,63	80,75	75,42	79,67	81,90	84,64	88,52	97,70	89,71	85,14	83,34	82,72	72,32	75,65

CQS: 82,3



Color parameters

CCT	CRI	CRI R9	TM30 Rf	TM30 Rg	CQS	x	y	u	v	Duv
4037 K	83,8	11,0	82,5	94,2	82,3	0,4	0,4	0,2	0,3	0,0007



**Intensities in 0° c-plane**

0°	5°	10°	15°	20°	25°	30°	35°	40°	45°	50°	55°	60°	65°	70°	75°	80°	85°	90°	95°
251	249	245	241	234	225	214	200	184	169	153	134	116	100	84	68	55	43	32	22
100%	99%	98%	96%	93%	90%	85%	80%	74%	68%	61%	54%	46%	40%	34%	27%	22%	17%	13%	9%

**Intensities in 90° c-plane**

0°	5°	10°	15°	20°	25°	30°	35°	40°	45°	50°	55°	60°	65°	70°	75°	80°	85°	90°	95°
251	247	243	235	227	216	203	190	175	157	139	122	101	81	63	45	28	17	11	7
100%	99%	97%	94%	91%	86%	81%	76%	70%	63%	55%	49%	41%	33%	25%	18%	11%	7%	4%	3%

**Intensities in 180° c-plane**

0°	5°	10°	15°	20°	25°	30°	35°	40°	45°	50°	55°	60°	65°	70°	75°	80°	85°	90°	95°
251	250	249	243	236	227	218	206	192	177	162	144	127	110	92	76	62	49	38	29
100%	100%	99%	97%	94%	91%	87%	82%	77%	71%	65%	58%	51%	44%	37%	30%	25%	20%	15%	12%

**Intensities in 270° c-plane**

0°	5°	10°	15°	20°	25°	30°	35°	40°	45°	50°	55°	60°	65°	70°	75°	80°	85°	90°	95°
251	250	249	246	242	235	226	214	200	186	170	153	134	116	94	74	52	34	19	10
100%	100%	100%	98%	96%	94%	90%	85%	80%	74%	68%	61%	54%	46%	37%	30%	21%	13%	7%	4%

Beam angle 50%	Field angle 10%	Cutoff angle 2,5%	Intensity ratio in 120° cone	Intensity ratio in 90° cone
116,9°	178,4°	321,5°	69,3%	46,6%