

Эффективность света:

**129 Lumen/Watt**

Качество света:

**CRI: 81,8**

Цветовая температура:

**4055 K**

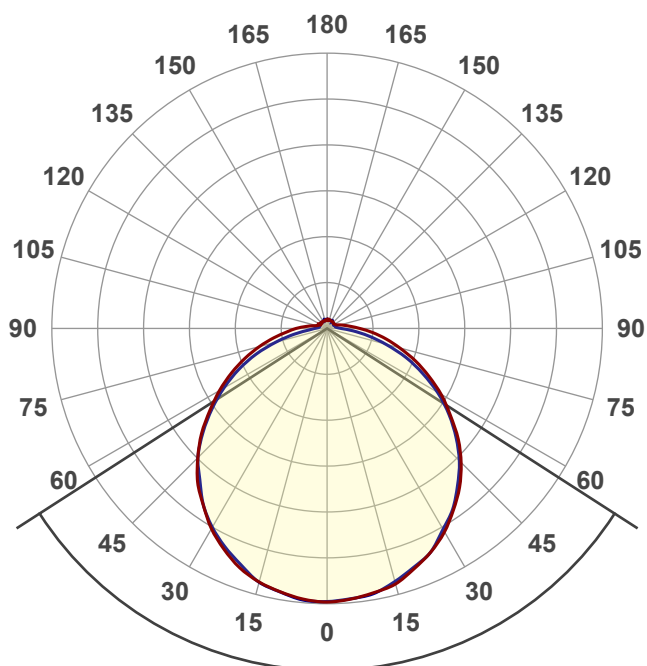
**Поток: 480 lm**

**Интенс.: 147 cd**

**Мощн.: 3,7 W**

**КПД: 0,83**

4 PLANES



Угол пучка

**114,5°**

Цвет

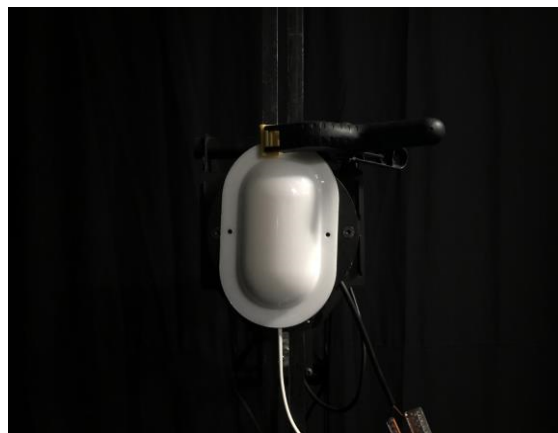
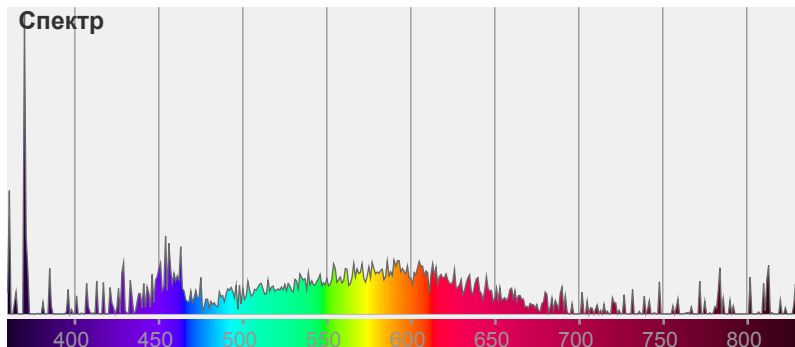


CIE1931

x: 0,377

y: 0,372

Спектр



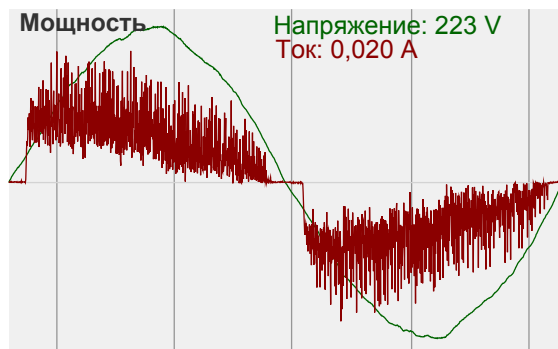
Название продукта:

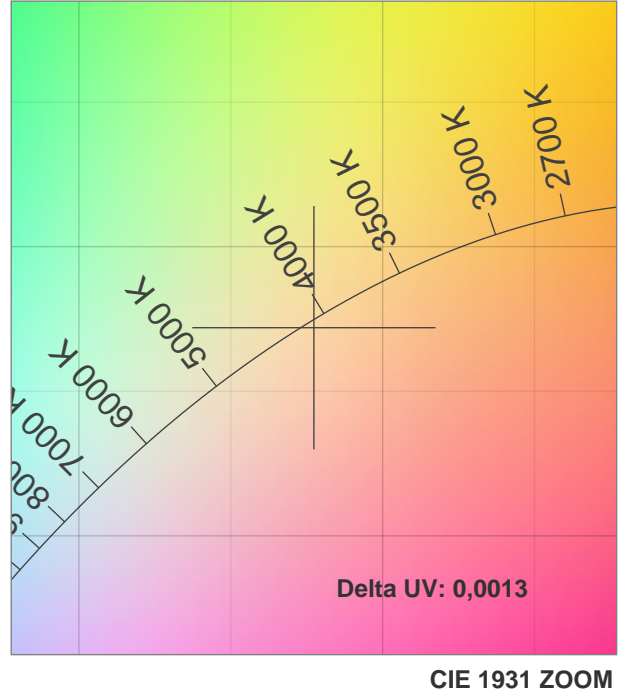
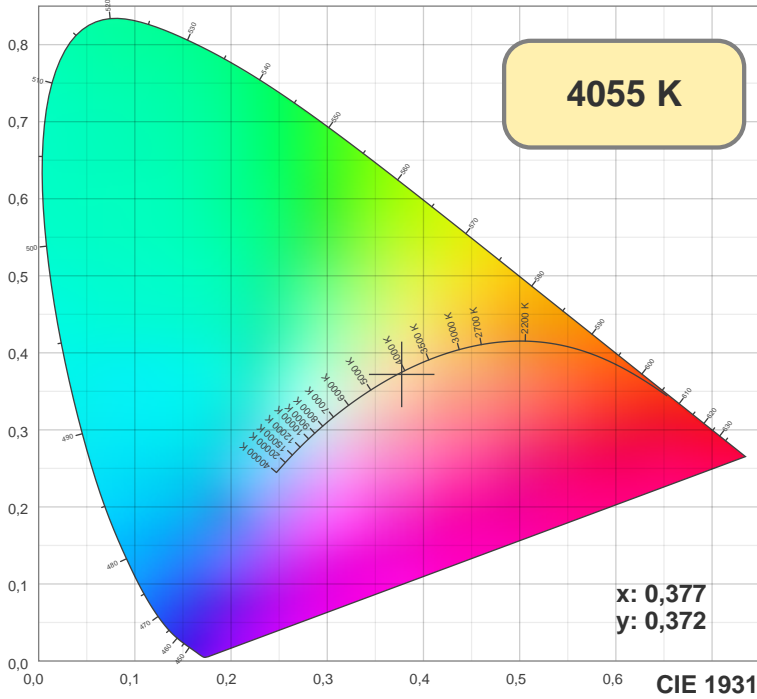
**ViLED CC**

**05-H-M-5-175.110.27-4-0-54**

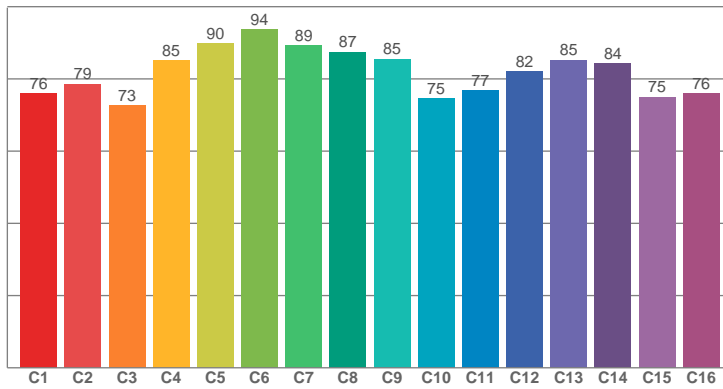
Дата и время:

**11.04.2018 9:45:37**

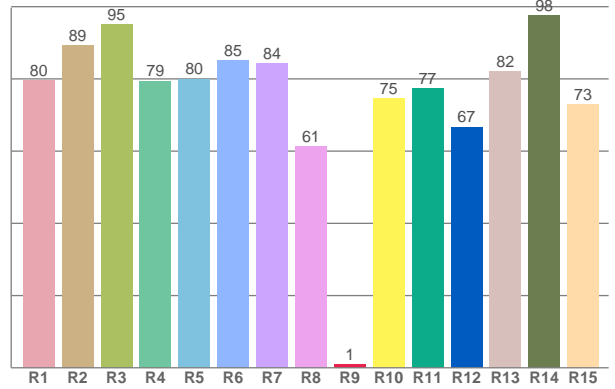




TM30: 81,9



CRI: 81,8 (R1-R8)



CRI R values, only R1-R8 are used to calculate final CRI value

R1	R2	R3	R4	R5	R6	R7	R8	R9	R10	R11	R12	R13	R14	R15
79,56	89,37	95,05	79,40	80,01	85,20	84,27	61,31	0,89	74,51	77,32	66,67	82,04	97,55	72,91

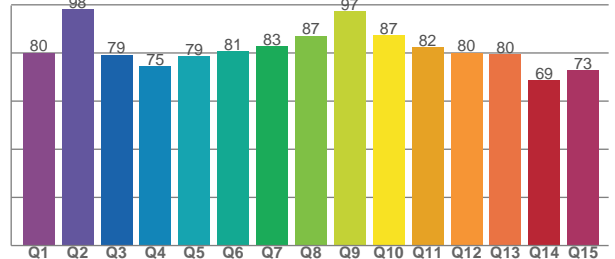
TM30 C values, 16 binned values out of total of 99 C values

C1	C2	C3	C4	C5	C6	C7	C8	C9	C10	C11	C12	C13	C14	C15	C16
76,04	78,65	72,64	85,12	89,75	93,71	89,34	87,47	85,50	74,62	76,80	82,11	85,24	84,23	75,05	75,91

CQS Q values

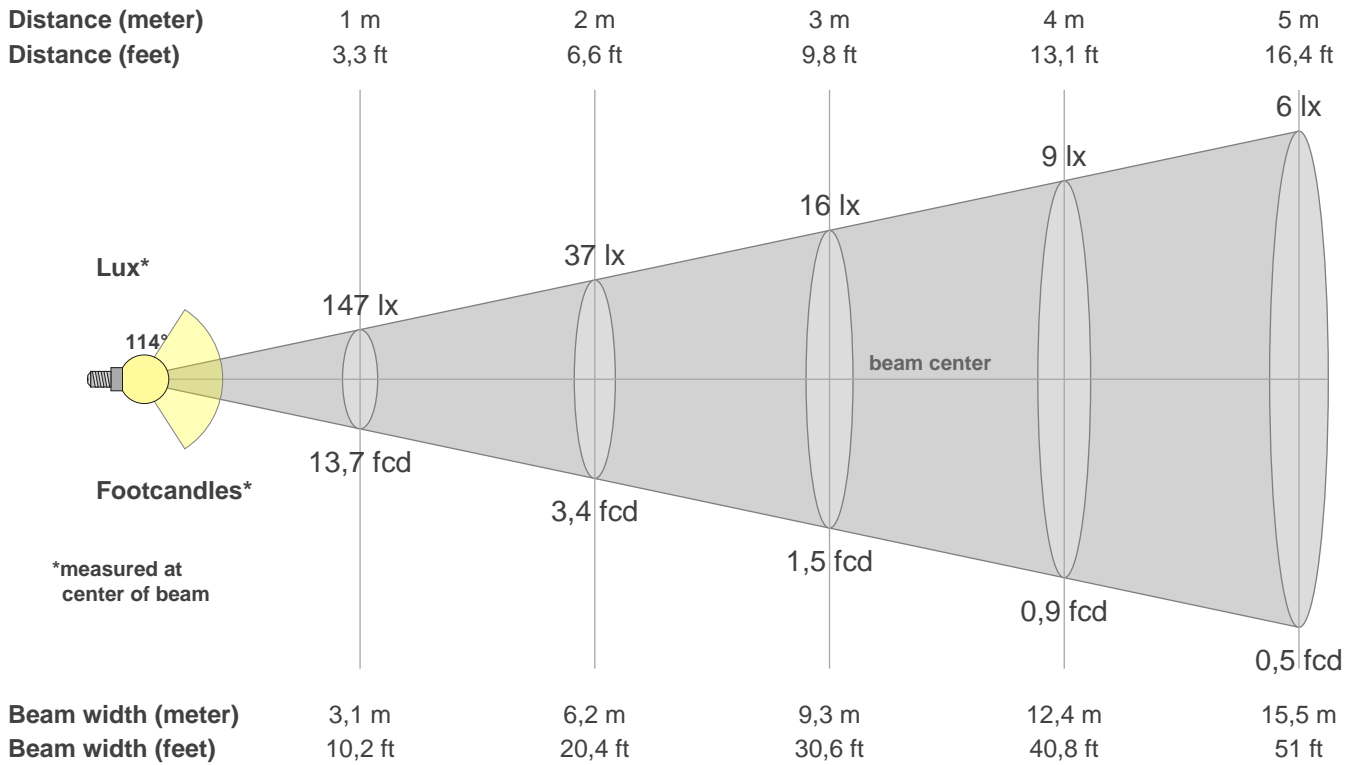
Q1	Q2	Q3	Q4	Q5	Q6	Q7	Q8	Q9	Q10	Q11	Q12	Q13	Q14	Q15
80,15	98,34	79,33	74,61	78,83	80,92	82,85	87,19	97,43	87,47	82,34	80,11	79,67	68,79	72,81

CQS: 80,4



Color parameters

CCT	CRI	CRI R9	TM30 Rf	TM30 Rg	CQS	x	y	u	v	Duv
4055 K	81,8	0,9	81,9	94,3	80,4	0,4	0,4	0,2	0,3	-0,0013



**Intensities in 0° c-plane**

0°	5°	10°	15°	20°	25°	30°	35°	40°	45°	50°	55°	60°	65°	70°	75°	80°	85°	90°	95°
147	146	144	142	138	133	126	119	111	102	92	81	71	60	50	41	32	24	18	13
100%	99%	98%	97%	94%	90%	86%	81%	76%	69%	63%	55%	48%	41%	34%	28%	22%	17%	12%	9%

**Intensities in 90° c-plane**

0°	5°	10°	15°	20°	25°	30°	35°	40°	45°	50°	55°	60°	65°	70°	75°	80°	85°	90°	95°
147	146	145	141	137	132	125	118	109	101	90	80	69	56	45	33	22	14	8	5
100%	99%	99%	96%	93%	90%	85%	80%	74%	68%	62%	54%	47%	38%	30%	22%	15%	9%	5%	4%

**Intensities in 180° c-plane**

0°	5°	10°	15°	20°	25°	30°	35°	40°	45°	50°	55°	60°	65°	70°	75°	80°	85°	90°	95°
147	146	144	141	137	131	125	116	108	98	88	77	67	57	47	38	29	22	17	12
100%	99%	98%	96%	93%	89%	85%	79%	74%	67%	60%	52%	45%	39%	32%	26%	20%	15%	11%	8%

**Intensities in 270° c-plane**

0°	5°	10°	15°	20°	25°	30°	35°	40°	45°	50°	55°	60°	65°	70°	75°	80°	85°	90°	95°
147	147	144	141	135	130	124	116	107	98	87	76	64	53	41	29	18	10	7	5
100%	100%	98%	96%	92%	88%	84%	79%	72%	67%	59%	51%	44%	36%	28%	19%	12%	7%	5%	3%

Beam angle 50%	Field angle 10%	Cutoff angle 2,5%	Intensity ratio in 120° cone	Intensity ratio in 90° cone
114,5°	174,7°	360,0°	69,7%	47,1%