

Эффективность света:

**135 Lumen/Watt**

Качество света:

**CRI: 85,0**

Цветовая температура:

**4068 K**

**Поток: 3086 lm**

**Интенс.: 1553 cd**

**Мощн.: 22,9 W**

**КПД: 0,91**

4 PLANES



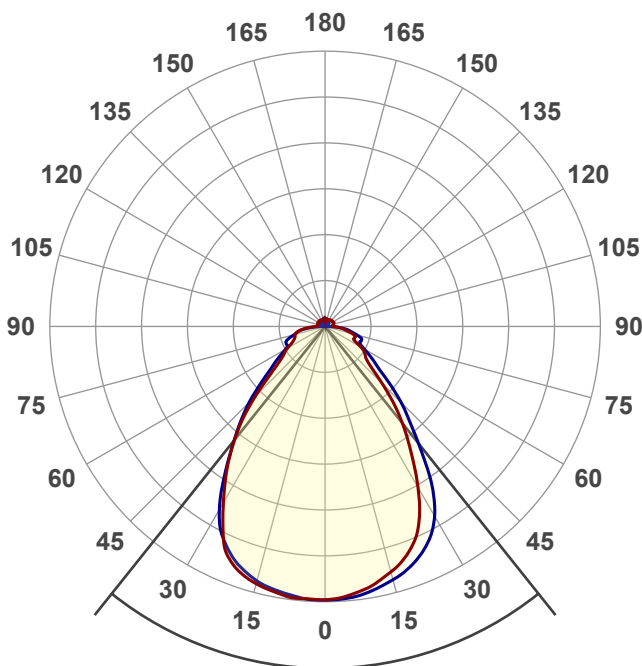
Название продукта:

**ViLED CC**

**04-Y-C-24-1500.65.15-4-0-65**

Дата и время:

**07.12.2017 10:56:05**



Угол пучка

**77,2°**

Цвет

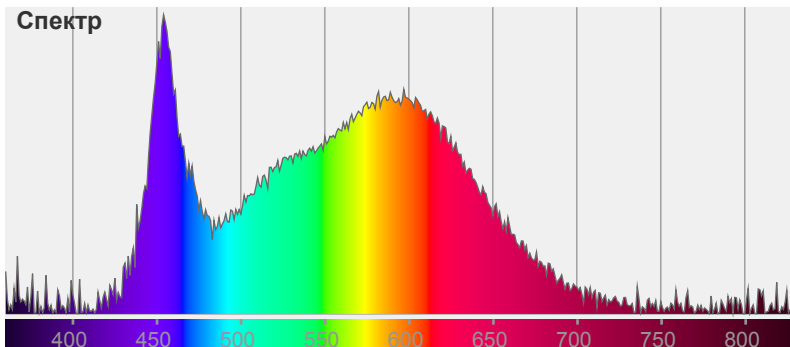


CIE1931

x: 0,364

y: 0,359

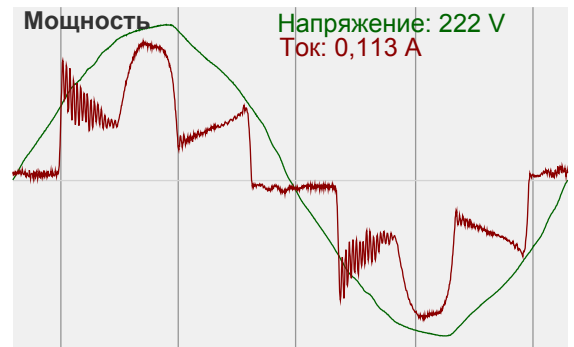
Спектр

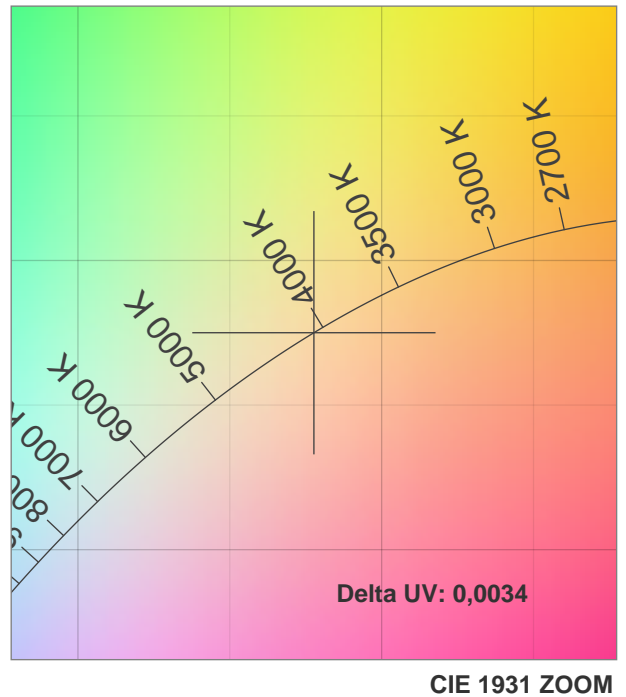
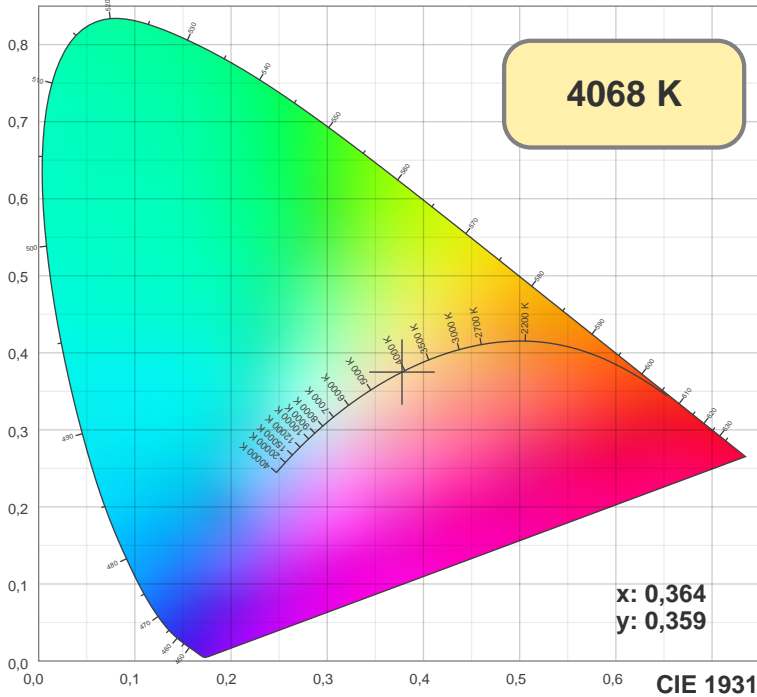


Мощность

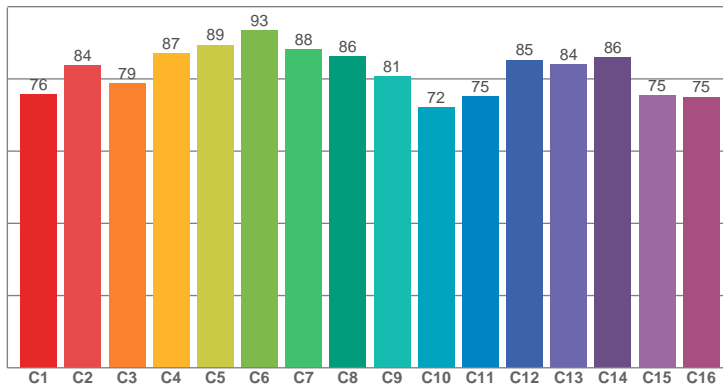
Напряжение: 222 V

Ток: 0,113 A

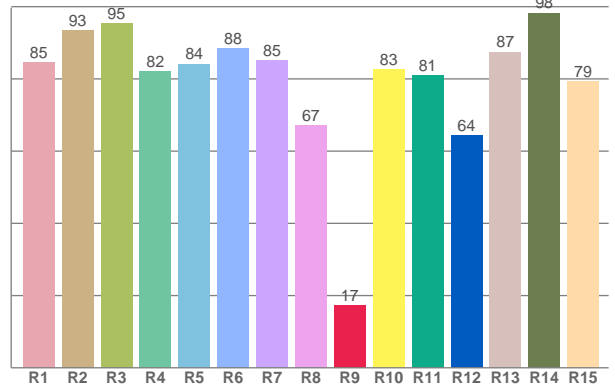




TM30: 82,1



CRI: 85,0 (R1-R8)



CRI R values, only R1-R8 are used to calculate final CRI value

R1	R2	R3	R4	R5	R6	R7	R8	R9	R10	R11	R12	R13	R14	R15
84,56	93,35	95,28	82,11	84,15	88,49	85,17	67,07	17,23	82,72	81,06	64,32	87,46	98,31	79,30

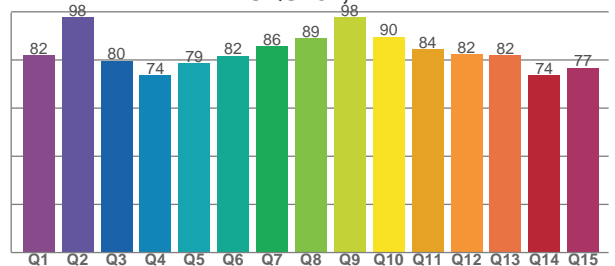
TM30 C values, 16 binned values out of total of 99 C values

C1	C2	C3	C4	C5	C6	C7	C8	C9	C10	C11	C12	C13	C14	C15	C16
75,62	83,72	78,68	87,12	89,38	93,43	88,09	86,18	80,69	72,11	75,23	85,25	83,91	86,00	75,34	75,02

CQS Q values

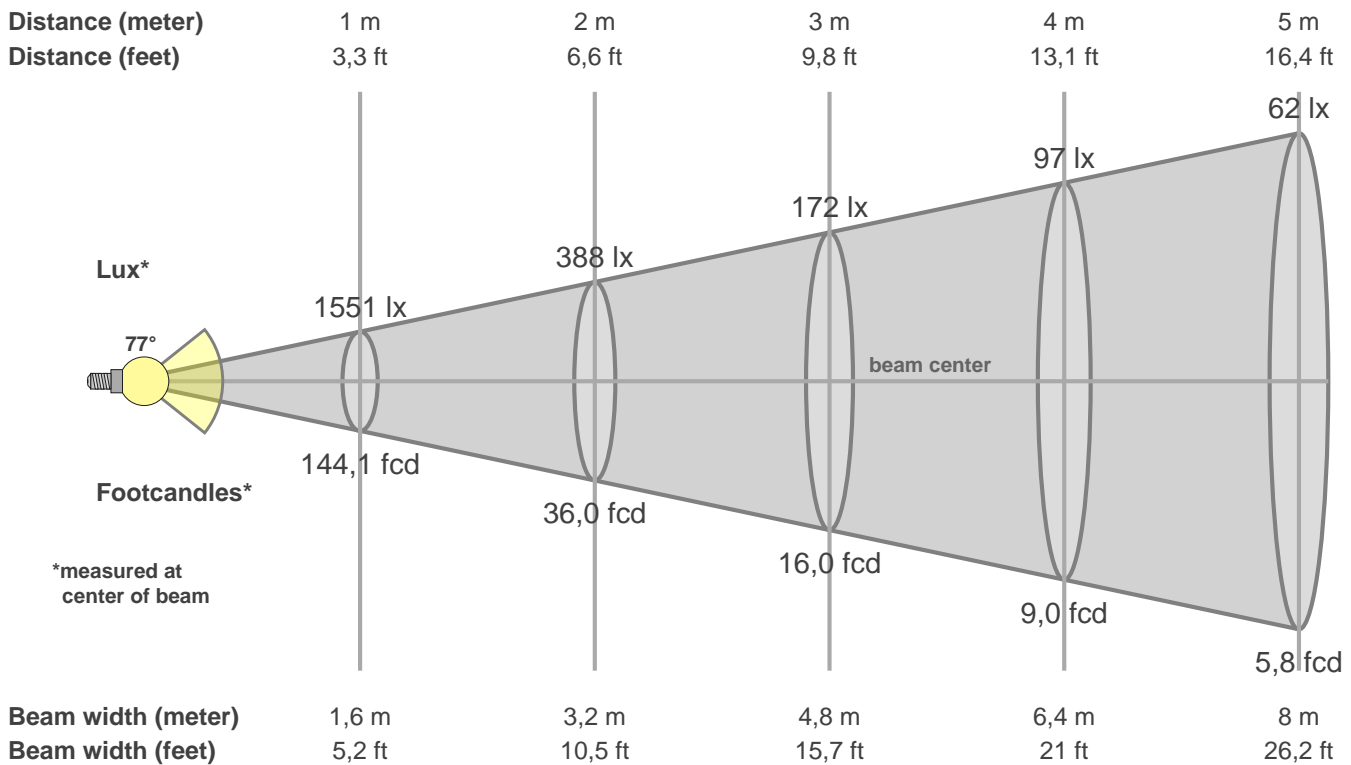
Q1	Q2	Q3	Q4	Q5	Q6	Q7	Q8	Q9	Q10	Q11	Q12	Q13	Q14	Q15
81,91	97,81	79,70	73,56	78,62	81,76	85,77	88,98	97,91	89,67	84,50	82,31	82,03	73,57	76,81

CQS: 82,1



Color parameters

CCT	CRI	CRI R9	TM30 Rf	TM30 Rg	CQS	x	y	u	v	Duv
4068 K	85,0	17,2	82,1	94,3	82,1	0,4	0,4	0,2	0,3	0,0034



**Intensities in 0° c-plane**

0°	5°	10°	15°	20°	25°	30°	35°	40°	45°	50°	55°	60°	65°	70°	75°	80°	85°	90°	95°
1551	1530	1496	1440	1369	1248	1053	839	651	460	326	276	234	182	180	159	118	84	46	45
100%	99%	96%	93%	88%	80%	68%	54%	42%	30%	21%	18%	15%	12%	12%	10%	8%	5%	3%	3%

**Intensities in 90° c-plane**

0°	5°	10°	15°	20°	25°	30°	35°	40°	45°	50°	55°	60°	65°	70°	75°	80°	85°	90°	95°
1551	1545	1523	1487	1439	1362	1238	1032	791	610	443	333	258	218	219	186	140	87	21	13
100%	100%	98%	96%	93%	88%	80%	67%	51%	39%	29%	21%	17%	14%	14%	12%	9%	6%	1%	1%

**Intensities in 180° c-plane**

0°	5°	10°	15°	20°	25°	30°	35°	40°	45°	50°	55°	60°	65°	70°	75°	80°	85°	90°	95°
1551	1549	1536	1510	1462	1355	1154	964	768	559	384	292	247	202	183	175	153	106	53	41
100%	100%	99%	97%	94%	87%	74%	62%	50%	36%	25%	19%	16%	13%	12%	11%	10%	7%	3%	3%

**Intensities in 270° c-plane**

0°	5°	10°	15°	20°	25°	30°	35°	40°	45°	50°	55°	60°	65°	70°	75°	80°	85°	90°	95°
1551	1545	1524	1493	1436	1346	1195	976	779	609	447	338	263	241	230	183	149	85	17	16
100%	100%	98%	96%	93%	87%	77%	63%	50%	39%	29%	22%	17%	16%	15%	12%	10%	5%	1%	1%

Beam angle 50%	Field angle 10%	Cutoff angle 2,5%	Intensity ratio in 120° cone	Intensity ratio in 90° cone
77,2°	148,6°	360,0°	78,4%	64,3%