

Эффективность света:

129 Lumen/Watt

Качество света:

CRI: 85,0

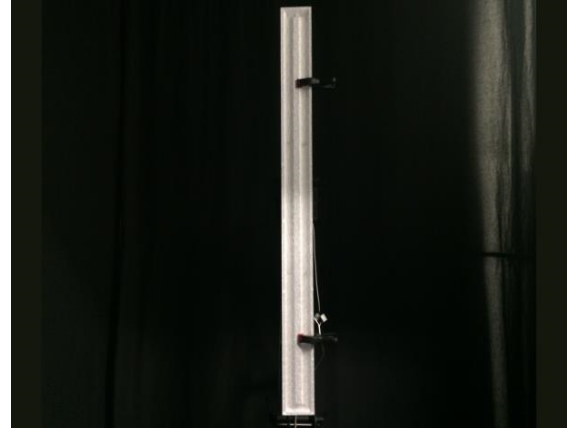
Цветовая температура:

4065 K

Поток: 6255 lm
Интенс.: 2457 cd

Мощн.: 48,6 W
КПД: 0,92

4 PLANES



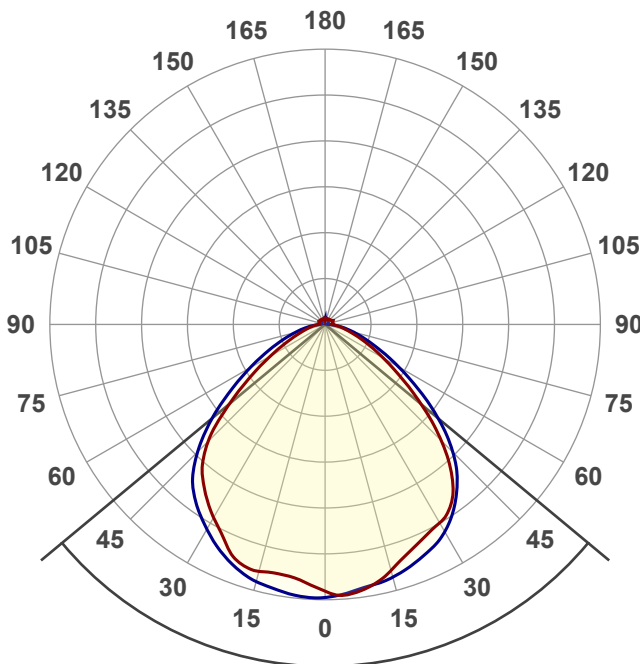
Название продукта:

ViLED CC

04-У-К-48-1500.130.15-4-0-65

Дата и время:

09.11.2017 11:36:21



Угол пучка

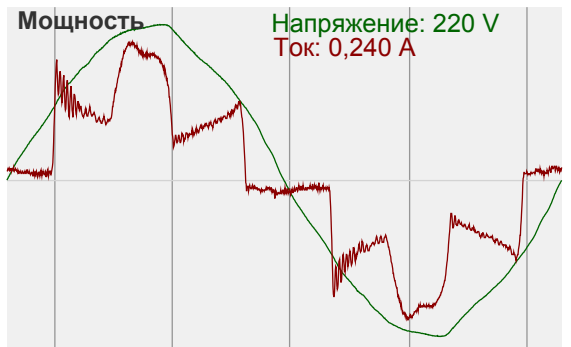
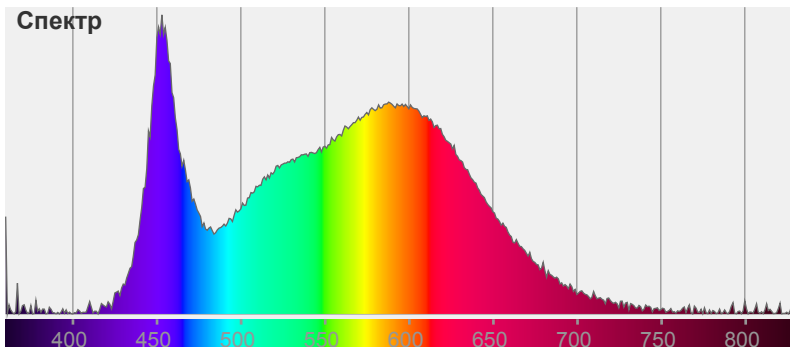
100,6°

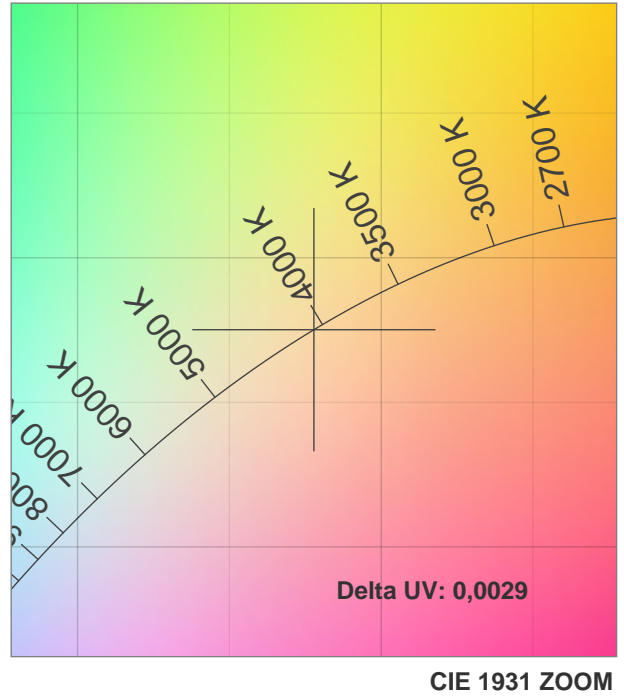
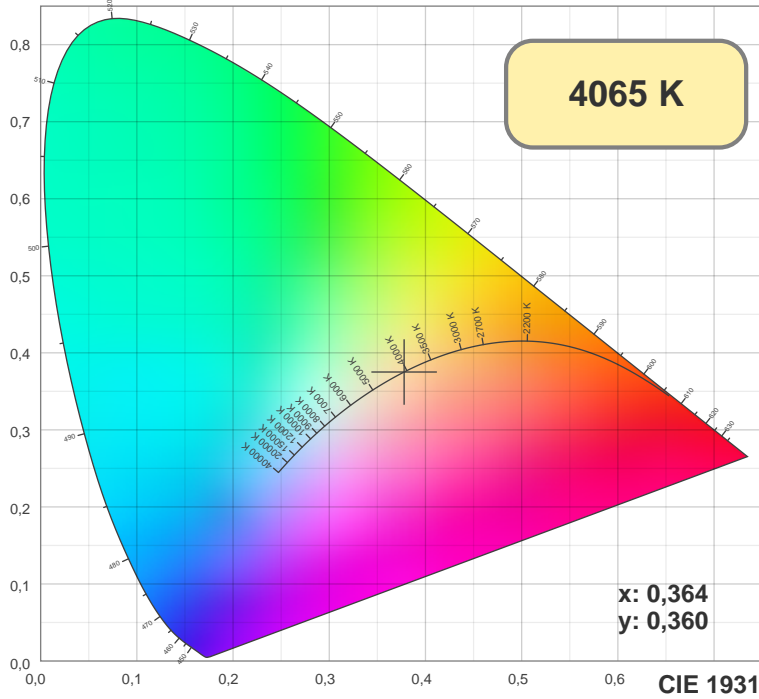
Цвет



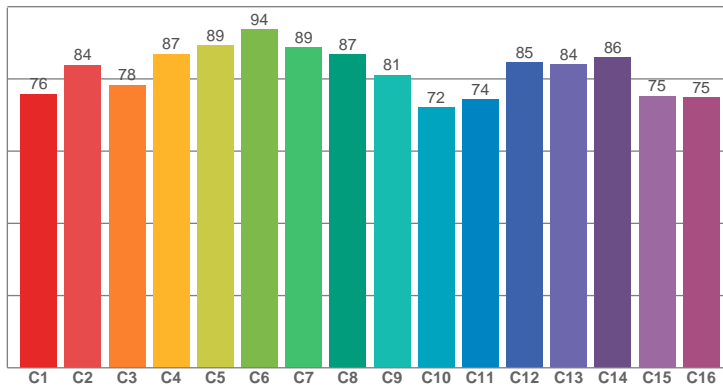
CIE1931
x: 0,364
y: 0,360

Спектр

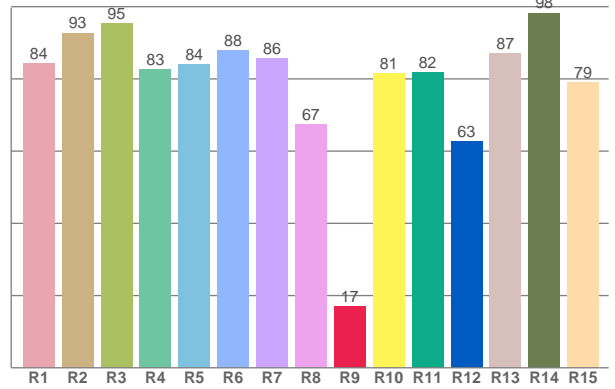




TM30: 82,0



CRI: 85,0 (R1-R8)



CRI R values, only R1-R8 are used to calculate final CRI value

R1	R2	R3	R4	R5	R6	R7	R8	R9	R10	R11	R12	R13	R14	R15
84,35	92,73	95,44	82,59	83,98	87,83	85,64	67,32	16,93	81,42	81,73	62,74	87,07	98,25	78,94

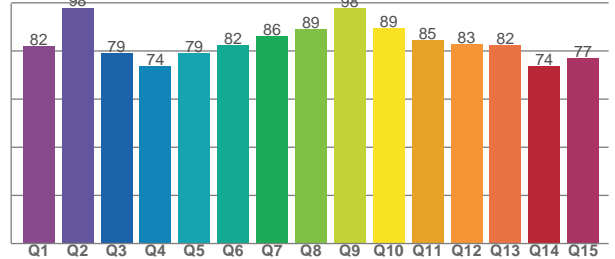
TM30 C values, 16 binned values out of total of 99 C values

C1	C2	C3	C4	C5	C6	C7	C8	C9	C10	C11	C12	C13	C14	C15	C16
75,82	83,88	78,32	86,92	89,18	93,62	88,73	86,71	81,14	72,12	74,41	84,53	83,92	85,99	75,25	74,85

CQS Q values

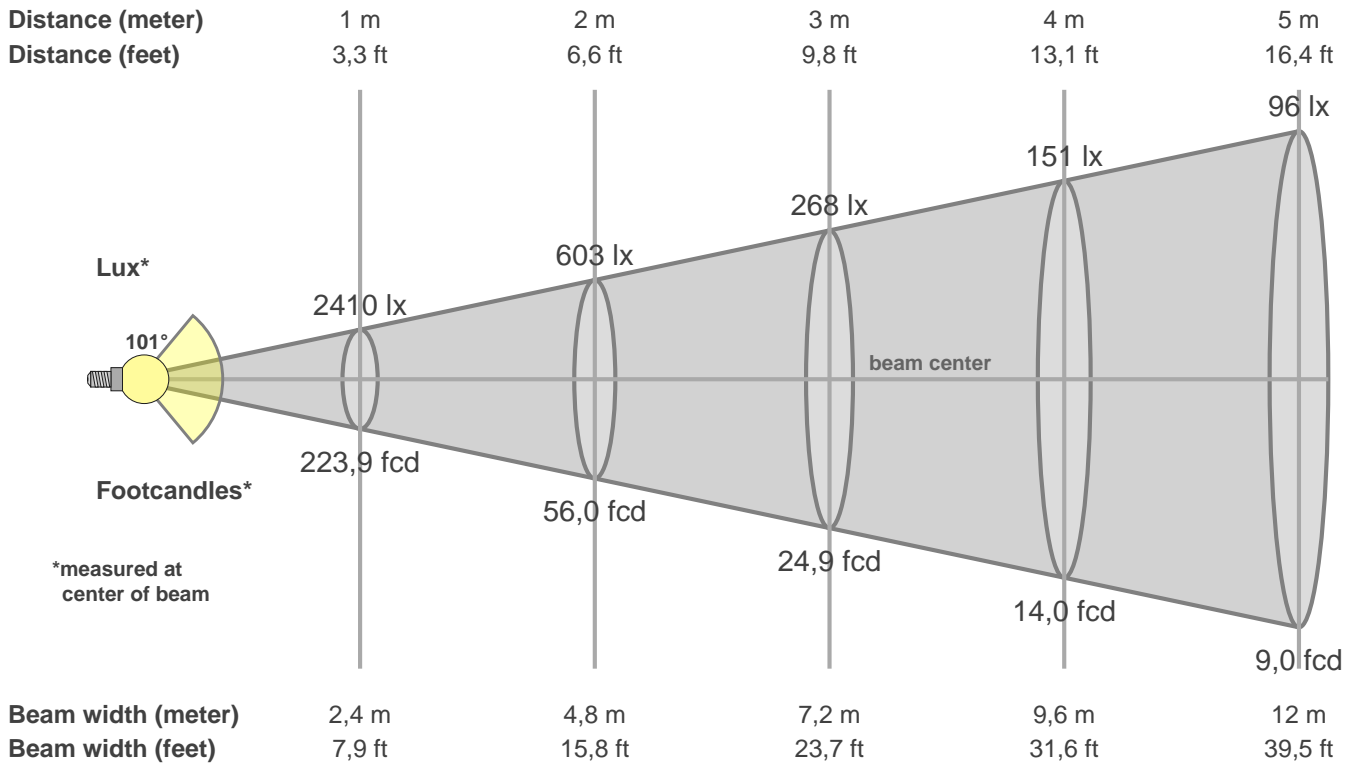
Q1	Q2	Q3	Q4	Q5	Q6	Q7	Q8	Q9	Q10	Q11	Q12	Q13	Q14	Q15
82,05	98,01	79,00	73,58	79,15	82,40	86,06	89,10	97,88	89,44	84,63	82,67	82,41	73,60	76,86

CQS: 82,3



Color parameters

CCT	CRI	CRI R9	TM30 Rf	TM30 Rg	CQS	x	y	u	v	Duv
4065 K	85,0	16,9	82,0	94,7	82,3	0,4	0,4	0,2	0,3	0,0029



Intensities in 0° c-plane

0°	5°	10°	15°	20°	25°	30°	35°	40°	45°	50°	55°	60°	65°	70°	75°	80°	85°	90°	95°
2410	2425	2379	2287	2186	2111	2053	1959	1761	1473	1147	847	612	437	305	210	148	101	66	64
100%	101%	99%	95%	91%	88%	85%	81%	73%	61%	48%	35%	25%	18%	13%	9%	6%	4%	3%	3%

Intensities in 90° c-plane

0°	5°	10°	15°	20°	25°	30°	35°	40°	45°	50°	55°	60°	65°	70°	75°	80°	85°	90°	95°
2410	2418	2380	2348	2295	2231	2144	2012	1840	1617	1337	1039	771	554	390	267	170	88	35	22
100%	100%	99%	97%	95%	93%	89%	83%	76%	67%	55%	43%	32%	23%	16%	11%	7%	4%	1%	1%

Intensities in 180° c-plane

0°	5°	10°	15°	20°	25°	30°	35°	40°	45°	50°	55°	60°	65°	70°	75°	80°	85°	90°	95°
2410	2319	2283	2292	2261	2138	2003	1866	1711	1476	1141	823	570	389	264	184	130	92	60	55
100%	96%	95%	95%	94%	89%	83%	77%	71%	61%	47%	34%	24%	16%	11%	8%	5%	4%	2%	2%

Intensities in 270° c-plane

0°	5°	10°	15°	20°	25°	30°	35°	40°	45°	50°	55°	60°	65°	70°	75°	80°	85°	90°	95°
2410	2450	2423	2388	2326	2236	2122	1999	1846	1616	1335	1037	780	570	406	279	183	103	43	32
100%	102%	101%	99%	97%	93%	88%	83%	77%	67%	55%	43%	32%	24%	17%	12%	8%	4%	2%	1%

Beam angle 50%	Field angle 10%	Cutoff angle 2,5%	Intensity ratio in 120° cone	Intensity ratio in 90° cone
100,6°	148,6°	207,5°	81,6%	59,2%