

Эффективность света:

145 Lumen/Watt

Качество света:

CRI: 85,2

Цветовая температура:

4089 K

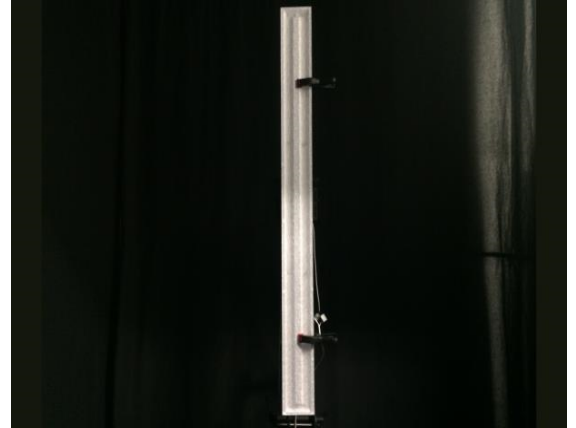
Поток: 5092 lm

Интенс.: 2043 cd

Мощн.: 35,1 W

КПД: 0,90

4 PLANES



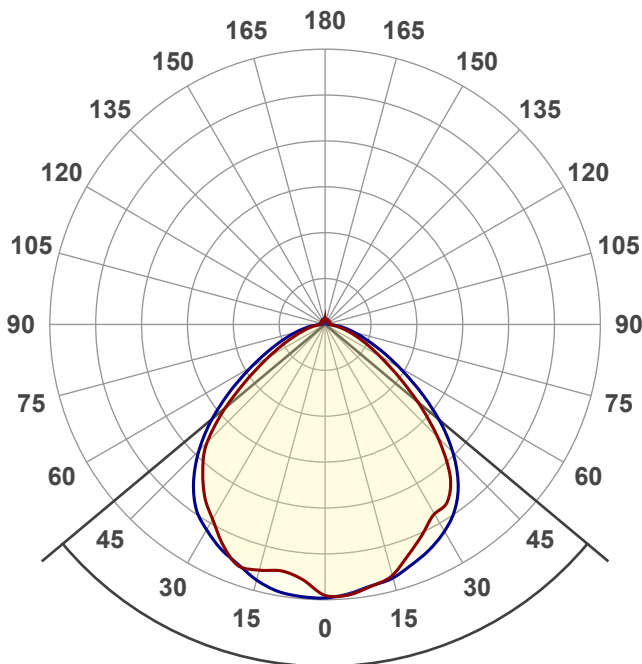
Название продукта:

ViLED CC

04-У-К-36-1500.130.15-4-0-65

Дата и время:

05.12.2017 9:35:24



Угол пучка

100,2°

Цвет

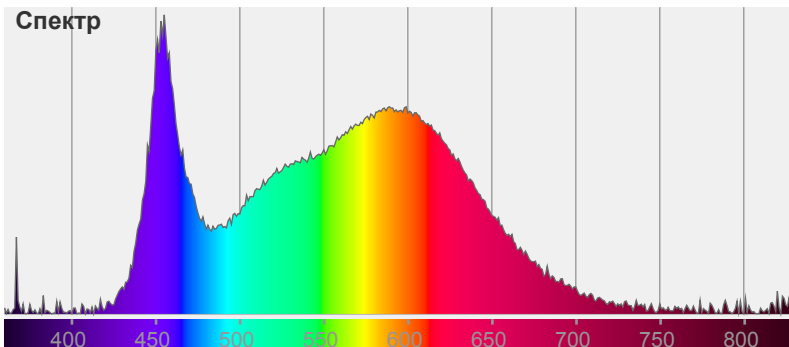


CIE1931

x: 0,363

y: 0,359

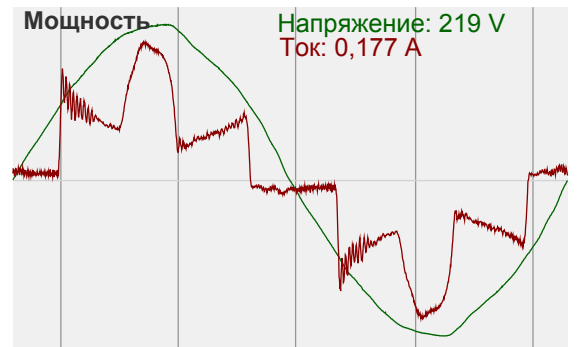
Спектр

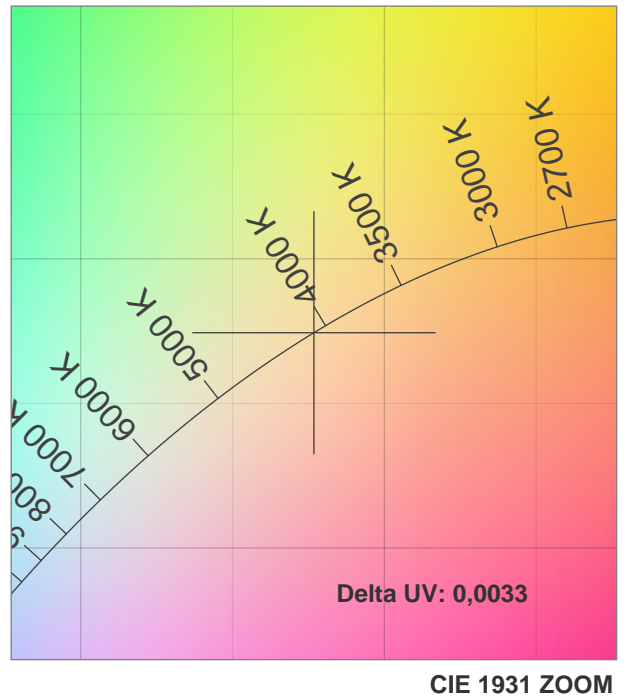
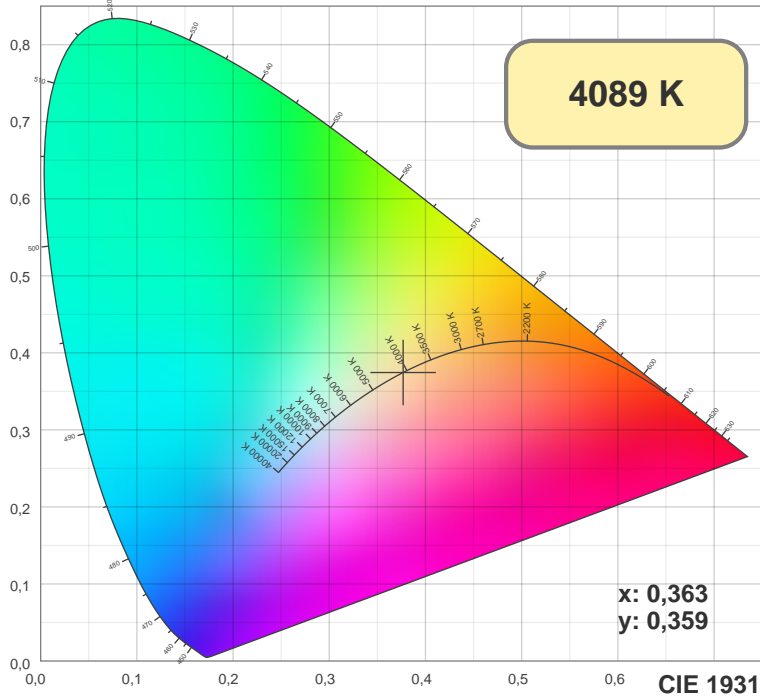


Мощность

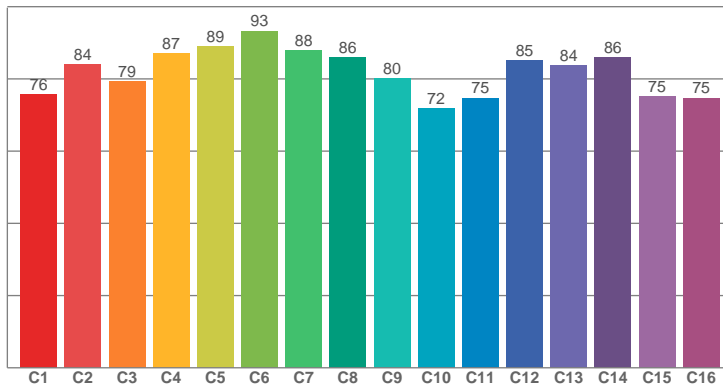
Напряжение: 219 V

Ток: 0,177 A

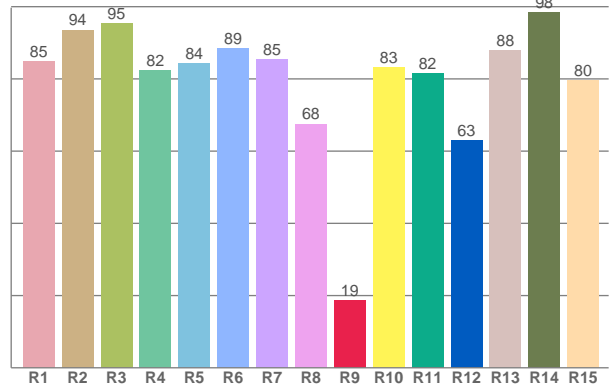




TM30: 81,9



CRI: 85,2 (R1-R8)



CRI R values, only R1-R8 are used to calculate final CRI value

R1	R2	R3	R4	R5	R6	R7	R8	R9	R10	R11	R12	R13	R14	R15
84,91	93,59	95,33	82,37	84,37	88,54	85,30	67,55	18,59	83,26	81,56	62,91	87,86	98,37	79,66

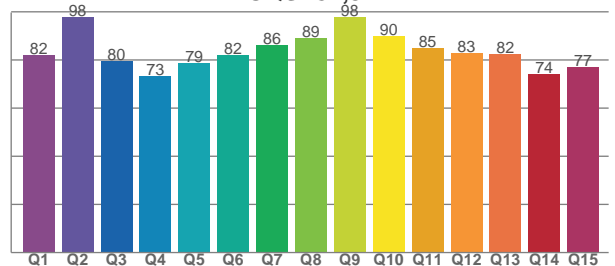
TM30 C values, 16 binned values out of total of 99 C values

C1	C2	C3	C4	C5	C6	C7	C8	C9	C10	C11	C12	C13	C14	C15	C16
75,74	83,96	79,24	87,09	88,99	93,29	87,84	85,86	80,17	71,77	74,74	85,09	83,65	85,94	75,05	74,70

CQS Q values

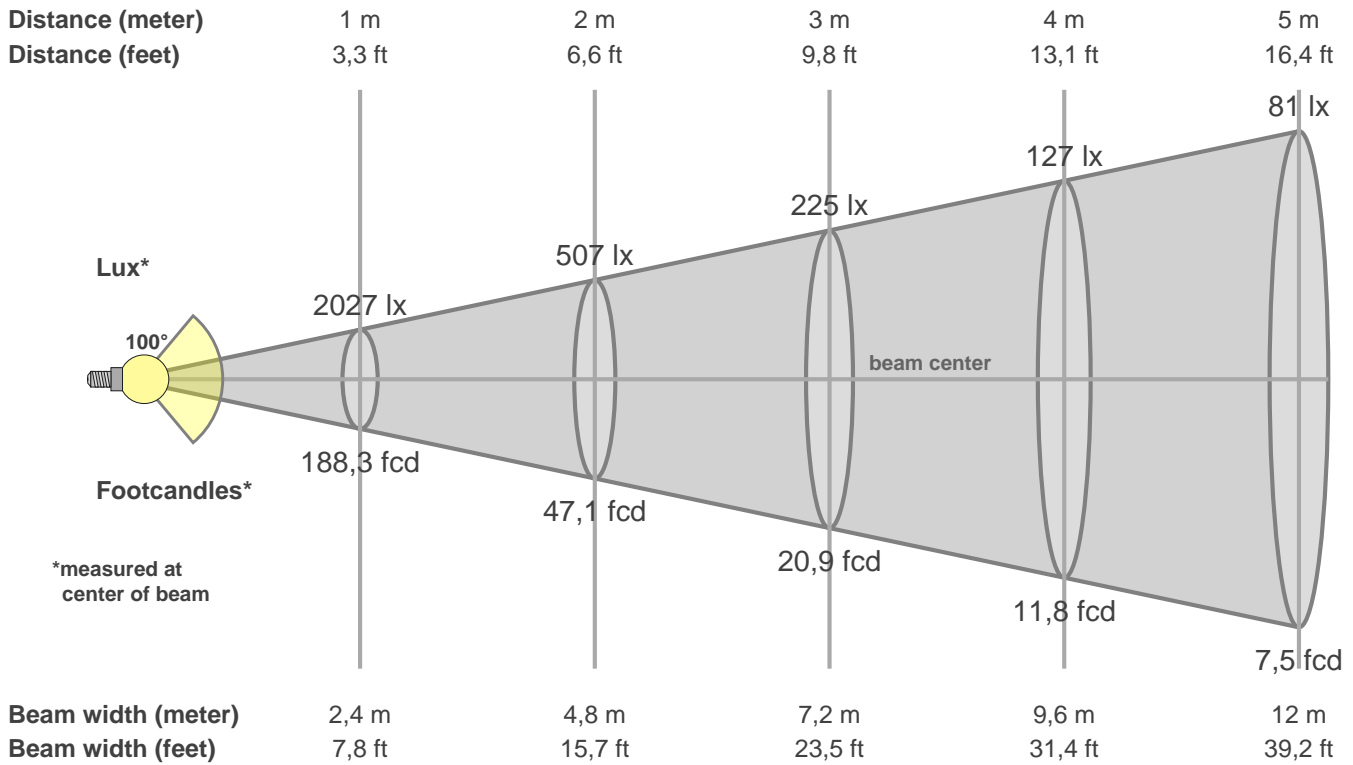
Q1	Q2	Q3	Q4	Q5	Q6	Q7	Q8	Q9	Q10	Q11	Q12	Q13	Q14	Q15
81,86	97,69	79,53	73,43	78,68	81,94	86,08	89,15	97,95	90,01	84,94	82,80	82,47	74,04	77,15

CQS: 82,3



Color parameters

CCT	CRI	CRI R9	TM30 Rf	TM30 Rg	CQS	x	y	u	v	Duv
4089 K	85,2	18,6	81,9	94,3	82,3	0,4	0,4	0,2	0,3	0,0033



Intensities in 0° c-plane

0°	5°	10°	15°	20°	25°	30°	35°	40°	45°	50°	55°	60°	65°	70°	75°	80°	85°	90°	95°
2027	2027	1985	1939	1828	1726	1636	1595	1442	1187	911	660	471	338	237	160	103	63	34	29
100%	100%	98%	96%	90%	85%	81%	79%	71%	59%	45%	33%	23%	17%	12%	8%	5%	3%	2%	1%

Intensities in 90° c-plane

0°	5°	10°	15°	20°	25°	30°	35°	40°	45°	50°	55°	60°	65°	70°	75°	80°	85°	90°	95°
2027	2018	1982	1959	1905	1851	1782	1686	1543	1346	1114	865	641	465	327	227	147	80	31	18
100%	100%	98%	97%	94%	91%	88%	83%	76%	66%	55%	43%	32%	23%	16%	11%	7%	4%	2%	1%

Intensities in 180° c-plane

0°	5°	10°	15°	20°	25°	30°	35°	40°	45°	50°	55°	60°	65°	70°	75°	80°	85°	90°	95°
2027	1913	1870	1899	1912	1811	1680	1567	1420	1243	978	705	491	337	227	154	104	63	36	31
100%	94%	92%	94%	94%	89%	83%	77%	70%	61%	48%	35%	24%	17%	11%	8%	5%	3%	2%	2%

Intensities in 270° c-plane

0°	5°	10°	15°	20°	25°	30°	35°	40°	45°	50°	55°	60°	65°	70°	75°	80°	85°	90°	95°
2027	2040	2024	1976	1904	1847	1770	1678	1526	1331	1105	862	642	466	332	230	148	82	29	22
100%	101%	100%	98%	94%	91%	87%	83%	75%	66%	55%	43%	32%	23%	16%	11%	7%	4%	1%	1%

Beam angle 50%	Field angle 10%	Cutoff angle 2,5%	Intensity ratio in 120° cone	Intensity ratio in 90° cone
100,2°	148,1°	174,4°	82,8%	60,1%