

Эффективность света:

142 Lumen/Watt

Качество света:

CRI: 85,3

Цветовая температура:

4096 K

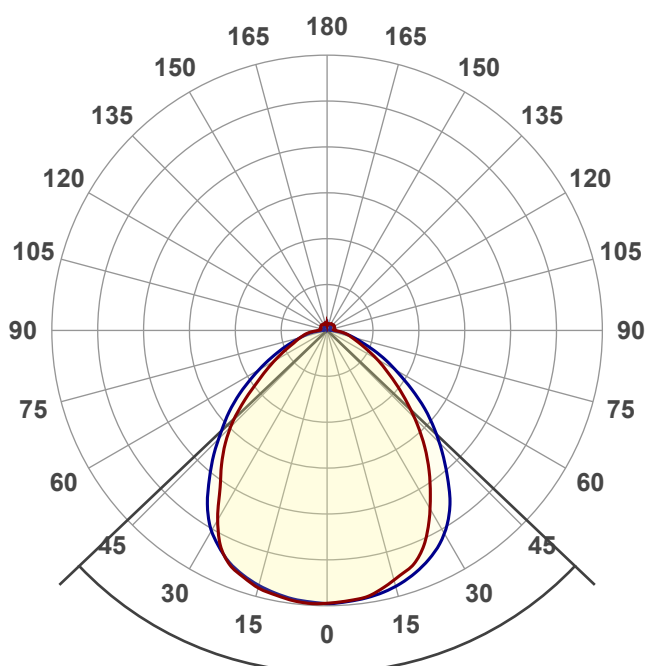
Поток: 3249 lm

Интенс.: 1348 cd

Мощн.: 22,9 W

КПД: 0,91

4 PLANES



Угол пучка

92,9°

Цвет

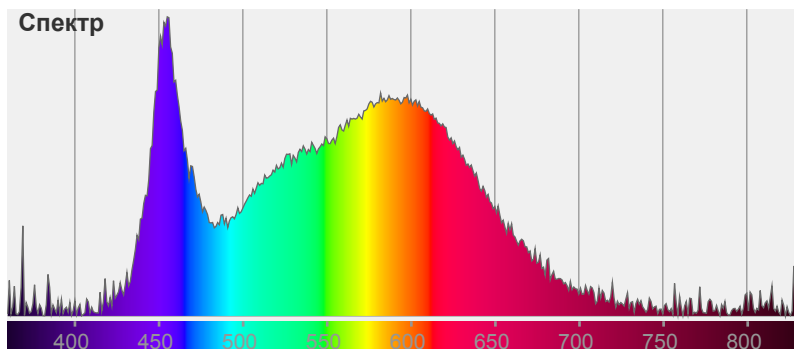


CIE1931

x: 0,363

y: 0,359

Спектр



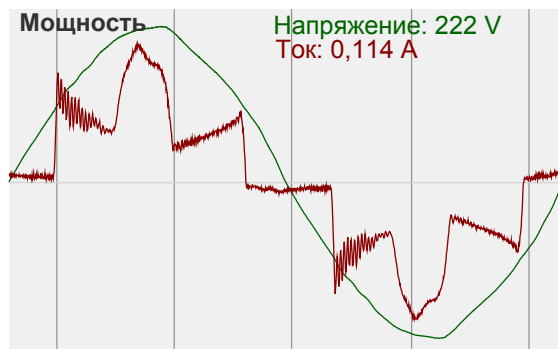
Название продукта:

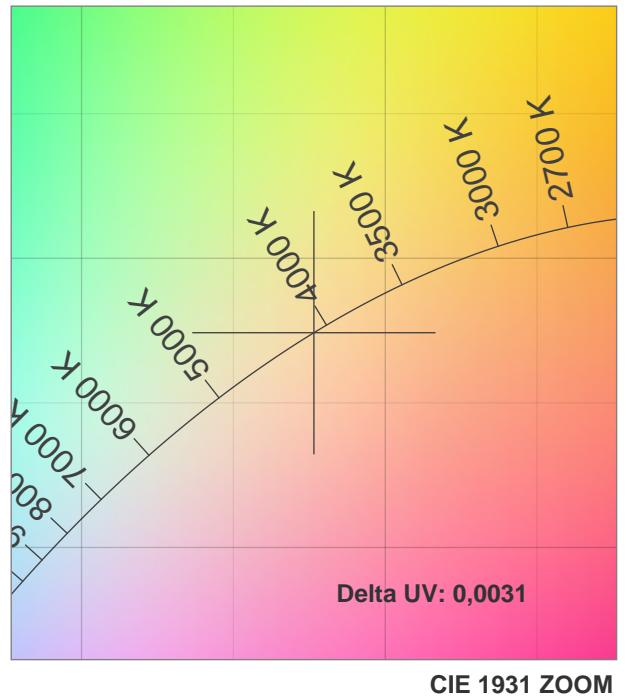
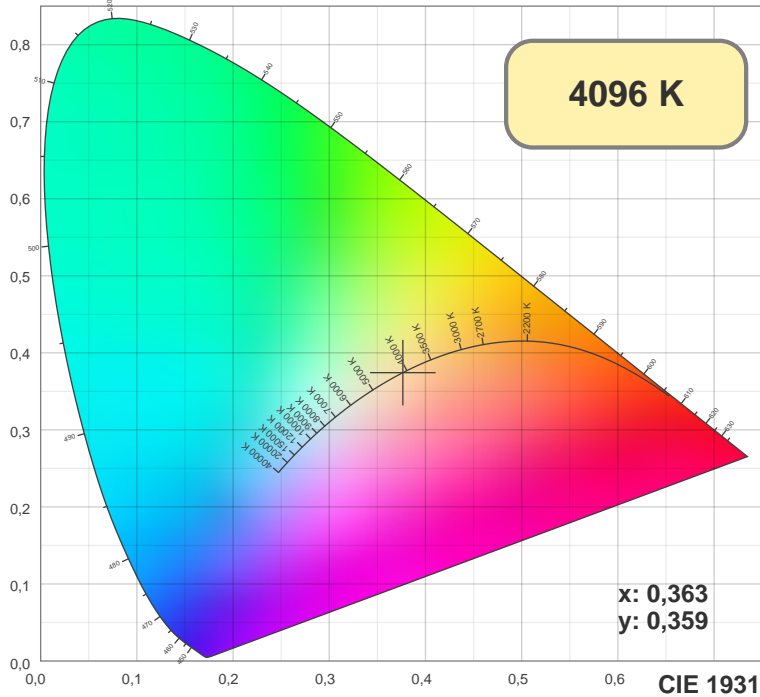
ViLED CC

04-Y-A-24-1500.65.15-4-0-65

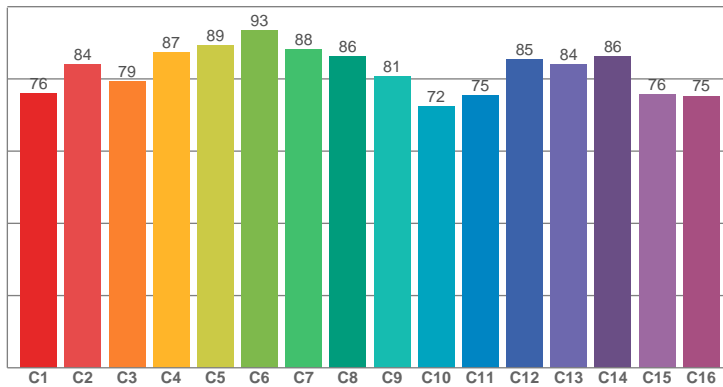
Дата и время:

06.12.2017 18:04:00

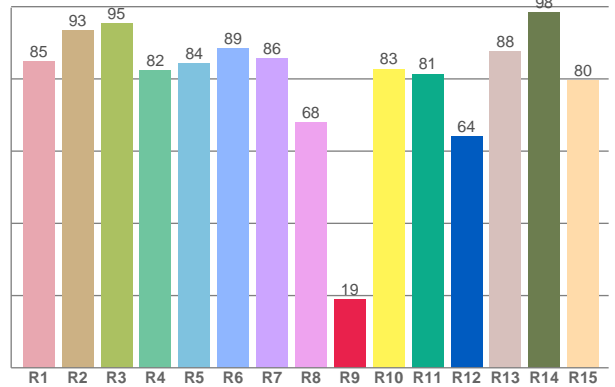




TM30: 82,3



CRI: 85,3 (R1-R8)



CRI R values, only R1-R8 are used to calculate final CRI value

R1	R2	R3	R4	R5	R6	R7	R8	R9	R10	R11	R12	R13	R14	R15
84,83	93,40	95,43	82,43	84,34	88,51	85,58	67,87	18,99	82,74	81,40	63,99	87,68	98,33	79,67

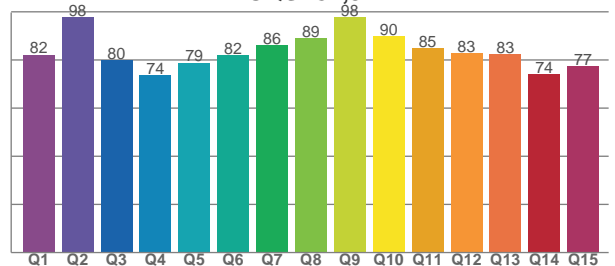
TM30 C values, 16 binned values out of total of 99 C values

C1	C2	C3	C4	C5	C6	C7	C8	C9	C10	C11	C12	C13	C14	C15	C16
76,06	84,08	79,21	87,24	89,35	93,45	88,17	86,27	80,77	72,28	75,33	85,39	84,07	86,19	75,61	75,29

CQS Q values

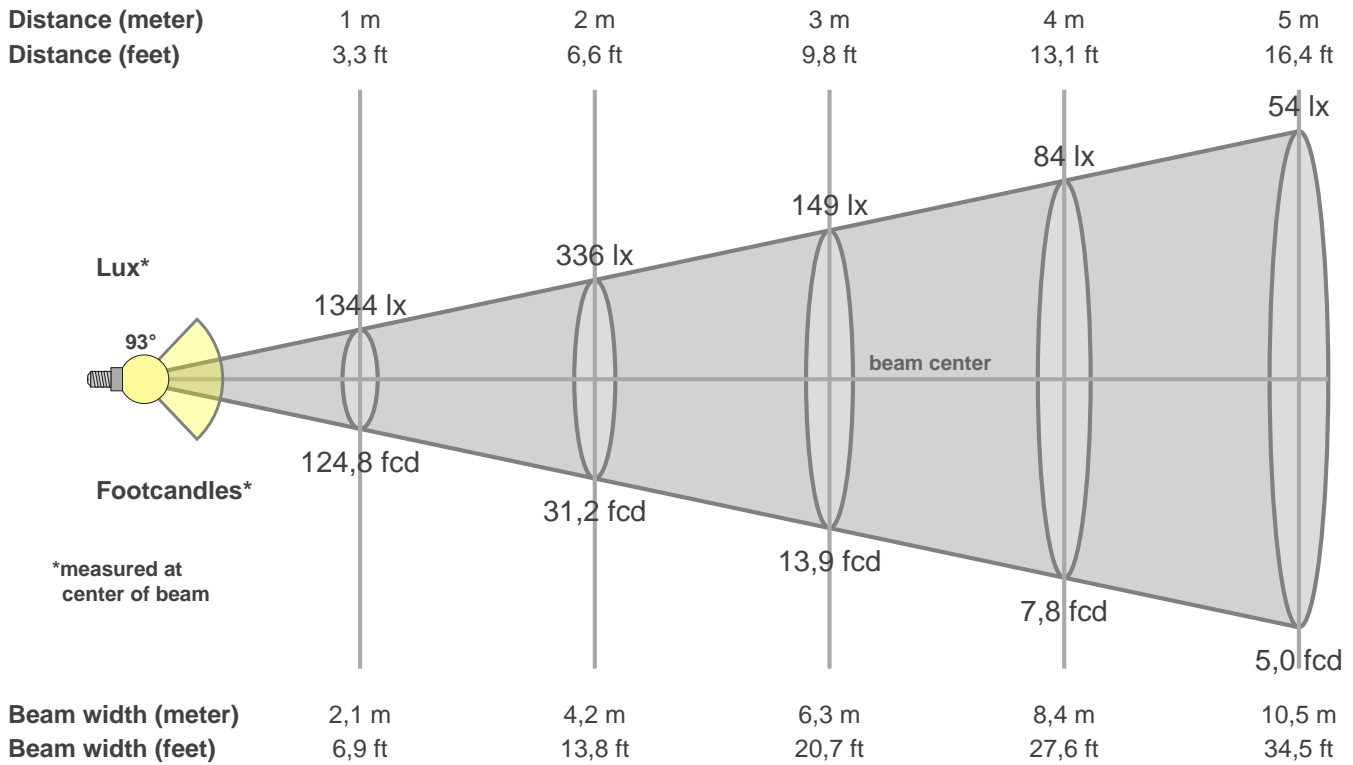
Q1	Q2	Q3	Q4	Q5	Q6	Q7	Q8	Q9	Q10	Q11	Q12	Q13	Q14	Q15
82,19	97,78	79,86	73,78	78,85	81,96	86,01	89,21	97,92	89,86	84,85	82,83	82,56	74,18	77,31

CQS: 82,5



Color parameters

CCT	CRI	CRI R9	TM30 Rf	TM30 Rg	CQS	x	y	u	v	Duv
4096 K	85,3	19,0	82,3	94,4	82,5	0,4	0,4	0,2	0,3	0,0031



Intensities in 0° c-plane

0°	5°	10°	15°	20°	25°	30°	35°	40°	45°	50°	55°	60°	65°	70°	75°	80°	85°	90°	95°
1344	1334	1314	1272	1230	1142	1014	881	747	610	482	371	285	212	158	122	95	63	39	37
100%	99%	98%	95%	92%	85%	75%	66%	56%	45%	36%	28%	21%	16%	12%	9%	7%	5%	3%	3%

Intensities in 90° c-plane

0°	5°	10°	15°	20°	25°	30°	35°	40°	45°	50°	55°	60°	65°	70°	75°	80°	85°	90°	95°
1344	1337	1325	1303	1270	1221	1152	1052	917	782	650	513	389	288	198	137	92	50	19	15
100%	100%	99%	97%	94%	91%	86%	78%	68%	58%	48%	38%	29%	21%	15%	10%	7%	4%	1%	1%

Intensities in 180° c-plane

0°	5°	10°	15°	20°	25°	30°	35°	40°	45°	50°	55°	60°	65°	70°	75°	80°	85°	90°	95°
1344	1344	1330	1311	1271	1206	1076	917	797	671	525	396	301	225	171	138	109	76	44	34
100%	100%	99%	98%	95%	90%	80%	68%	59%	50%	39%	29%	22%	17%	13%	10%	8%	6%	3%	3%

Intensities in 270° c-plane

0°	5°	10°	15°	20°	25°	30°	35°	40°	45°	50°	55°	60°	65°	70°	75°	80°	85°	90°	95°
1344	1336	1322	1299	1264	1211	1137	1027	891	756	633	509	389	286	201	136	95	50	20	17
100%	99%	98%	97%	94%	90%	85%	76%	66%	56%	47%	38%	29%	21%	15%	10%	7%	4%	1%	1%

Beam angle 50%	Field angle 10%	Cutoff angle 2,5%	Intensity ratio in 120° cone	Intensity ratio in 90° cone
92,9°	147,5°	291,5°	80,2%	59,6%