

Эффективность света:

**119 Lumen/Watt**

Качество света:

**CRI: 85,5**

Цветовая температура:

**4107 K**

**Поток: 4093 lm**

**Интенс.: 1317 cd**

**Мощн.: 34,5 W**

**КПД: 0,90**

4 PLANES



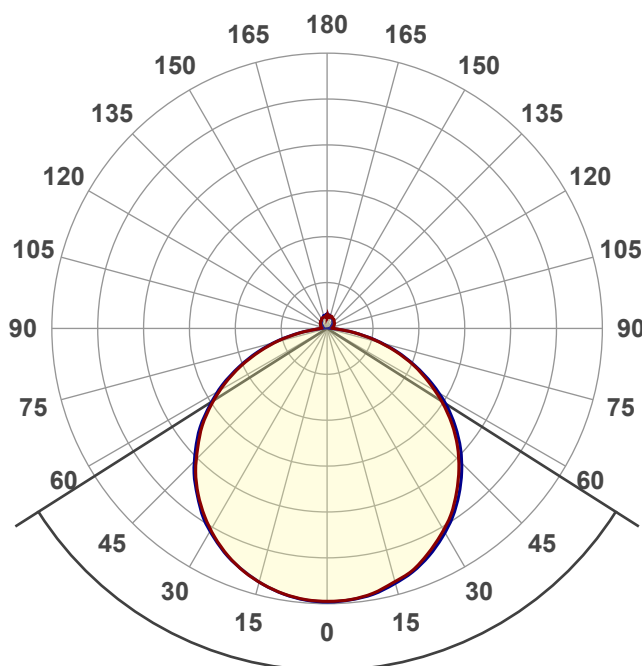
Название продукта:

**ViLED CC**

**03-У-М-36-1190.130.15-4-0-65**

Дата и время:

**05.12.2017 16:57:52**



Угол пучка

**115,2°**

Цвет

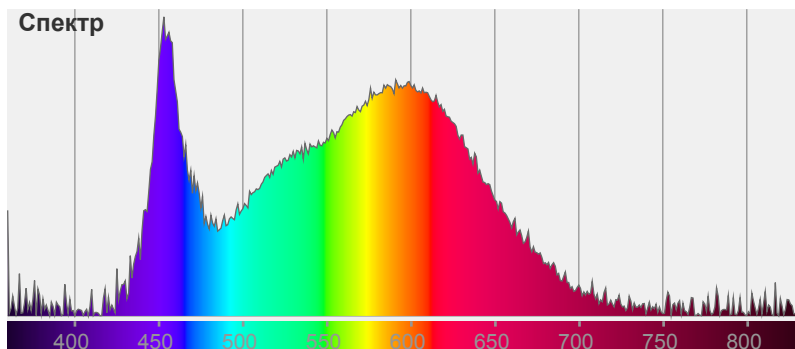


CIE1931

x: 0,374

y: 0,365

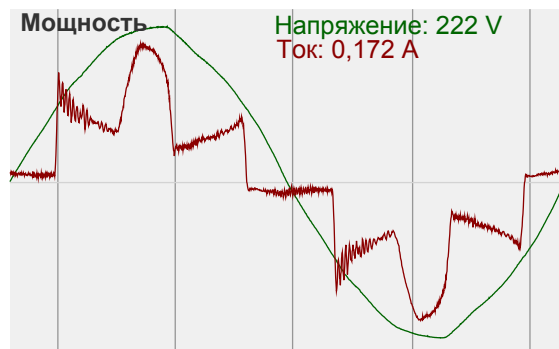
Спектр

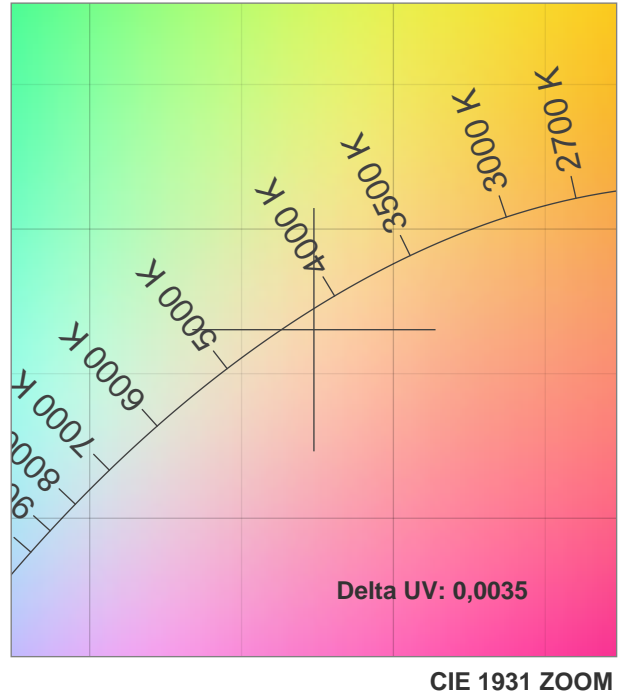
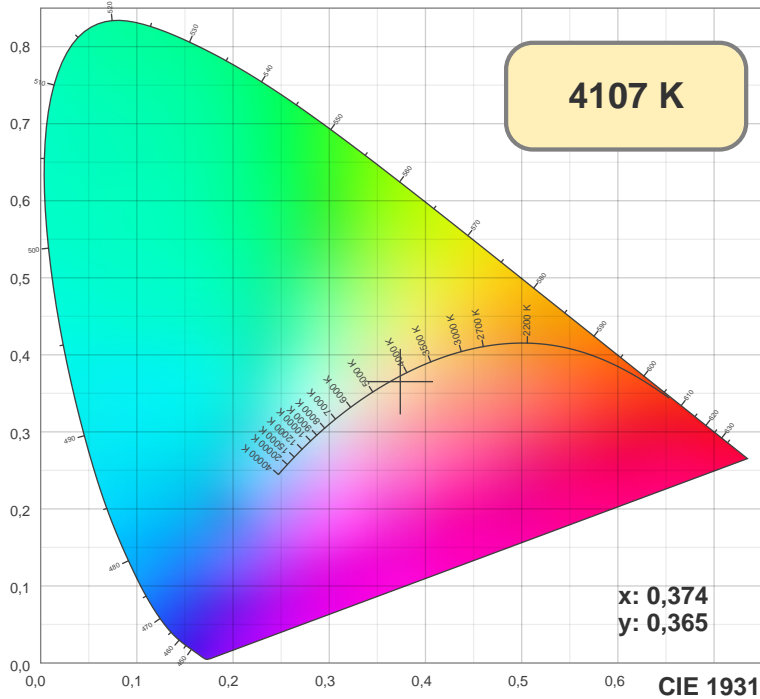


Мощность

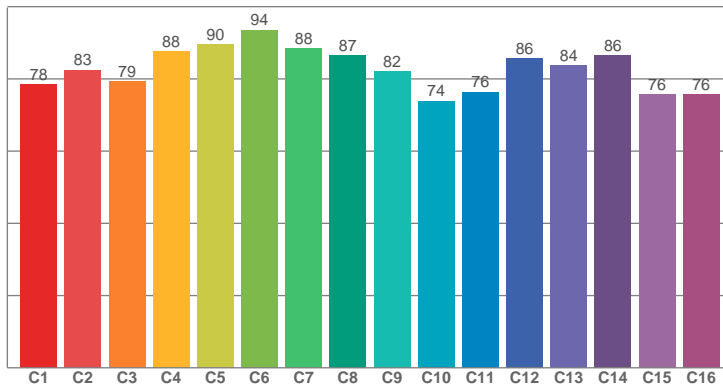
Напряжение: 222 V

Ток: 0,172 A

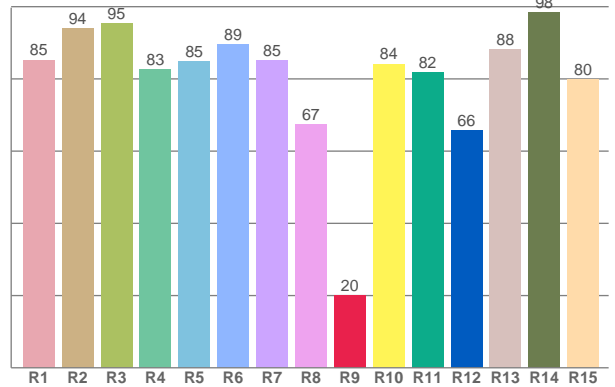




TM30: 82,6



CRI: 85,5 (R1-R8)



CRI R values, only R1-R8 are used to calculate final CRI value

R1	R2	R3	R4	R5	R6	R7	R8	R9	R10	R11	R12	R13	R14	R15
85,24	93,92	95,43	82,63	84,81	89,48	85,03	67,29	20,04	84,15	81,73	65,68	88,07	98,46	79,91

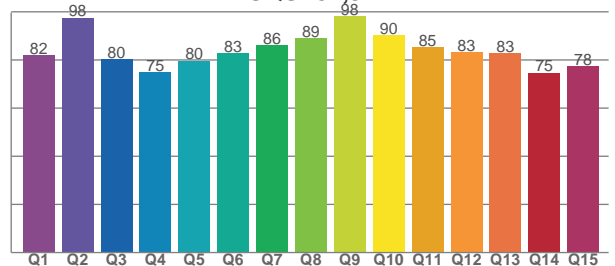
TM30 C values, 16 binned values out of total of 99 C values

C1	C2	C3	C4	C5	C6	C7	C8	C9	C10	C11	C12	C13	C14	C15	C16
78,38	82,50	79,32	87,57	89,60	93,54	88,46	86,55	81,98	73,93	76,39	85,59	83,64	86,45	75,68	75,62

CQS Q values

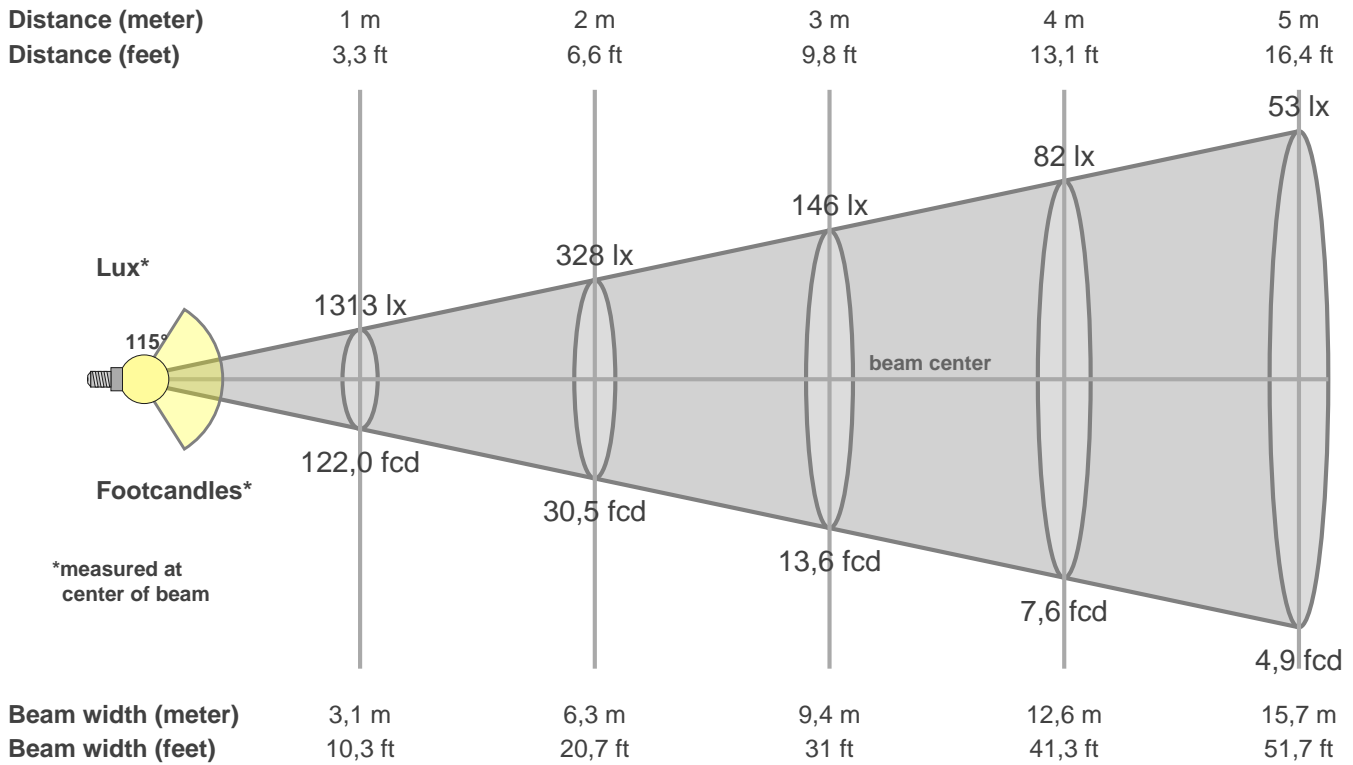
Q1	Q2	Q3	Q4	Q5	Q6	Q7	Q8	Q9	Q10	Q11	Q12	Q13	Q14	Q15
82,13	97,55	80,46	74,83	79,74	82,82	86,31	89,04	98,03	90,29	85,40	83,17	82,87	74,73	77,55

CQS: 82,9



Color parameters

CCT	CRI	CRI R9	TM30 Rf	TM30 Rg	CQS	x	y	u	v	Duv
4107 K	85,5	20,0	82,6	94,6	82,9	0,4	0,4	0,2	0,3	0,0035



**Intensities in 0° c-plane**

0°	5°	10°	15°	20°	25°	30°	35°	40°	45°	50°	55°	60°	65°	70°	75°	80°	85°	90°	95°
1313	1309	1292	1261	1229	1177	1120	1055	978	895	805	706	600	493	382	267	158	70	31	25
100%	100%	98%	96%	94%	90%	85%	80%	74%	68%	61%	54%	46%	38%	29%	20%	12%	5%	2%	2%

**Intensities in 90° c-plane**

0°	5°	10°	15°	20°	25°	30°	35°	40°	45°	50°	55°	60°	65°	70°	75°	80°	85°	90°	95°
1313	1310	1297	1269	1236	1190	1134	1070	996	915	826	728	621	507	391	274	158	64	20	15
100%	100%	99%	97%	94%	91%	86%	81%	76%	70%	63%	55%	47%	39%	30%	21%	12%	5%	2%	1%

**Intensities in 180° c-plane**

0°	5°	10°	15°	20°	25°	30°	35°	40°	45°	50°	55°	60°	65°	70°	75°	80°	85°	90°	95°
1313	1307	1290	1263	1226	1177	1119	1052	976	890	799	701	595	485	370	258	148	64	32	27
100%	100%	98%	96%	93%	90%	85%	80%	74%	68%	61%	53%	45%	37%	28%	20%	11%	5%	2%	2%

**Intensities in 270° c-plane**

0°	5°	10°	15°	20°	25°	30°	35°	40°	45°	50°	55°	60°	65°	70°	75°	80°	85°	90°	95°
1313	1309	1291	1262	1225	1181	1126	1060	985	903	812	712	607	495	381	266	152	59	22	21
100%	100%	98%	96%	93%	90%	86%	81%	75%	69%	62%	54%	46%	38%	29%	20%	12%	4%	2%	2%

Beam angle 50%	Field angle 10%	Cutoff angle 2,5%	Intensity ratio in 120° cone	Intensity ratio in 90° cone
115,2°	162,2°	360,0°	73,7%	49,8%