

Эффективность света:

**124 Lumen/Watt**

Качество света:

**CRI: 85,6**

Цветовая температура:

**4023 K**

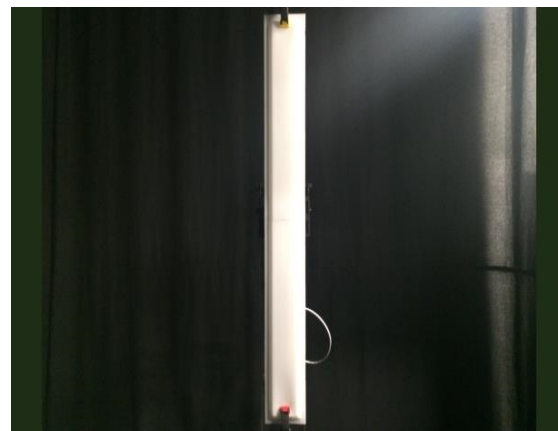
**Поток: 3001 lm**

**Интенс.: 810 cd**

**Мощн.: 24,3 W**

**КПД: 0,92**

4 PLANES



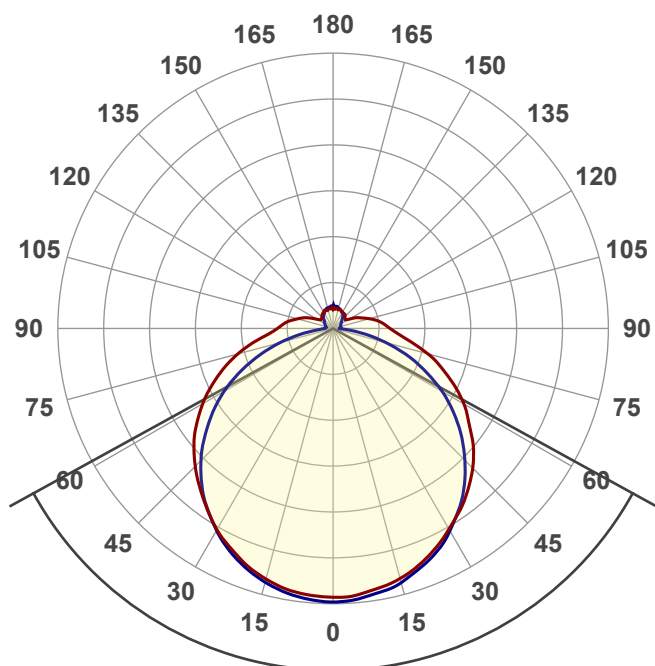
Название продукта:

**ViLED CC**

**03-У-М-24-1190.130.35-4-0-65**

Дата и время:

**10.11.2017 11:30:05**



Угол пучка

**122,4°**

Цвет

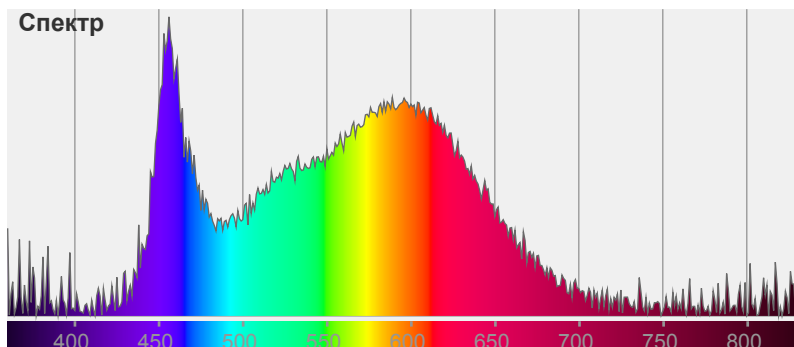


CIE1931

x: 0,369

y: 0,361

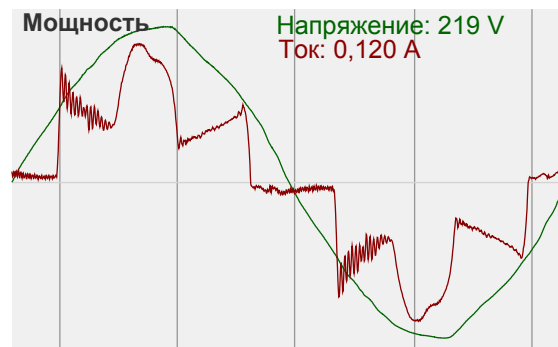
Спектр

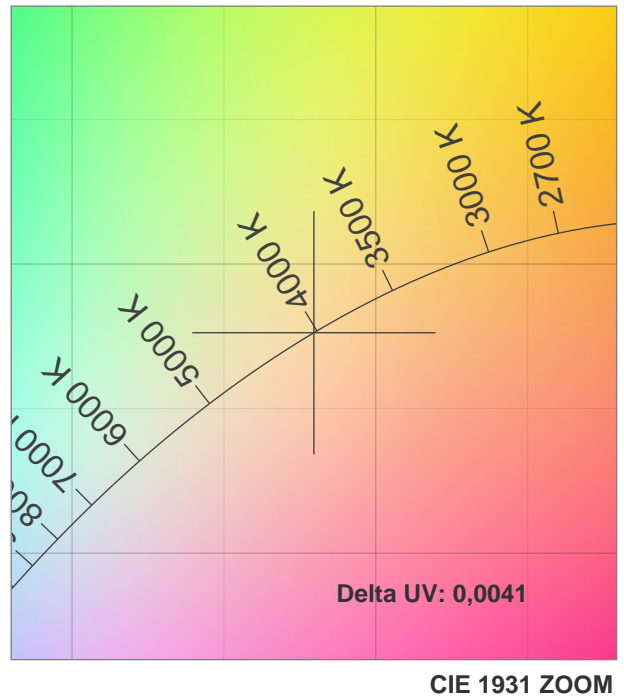
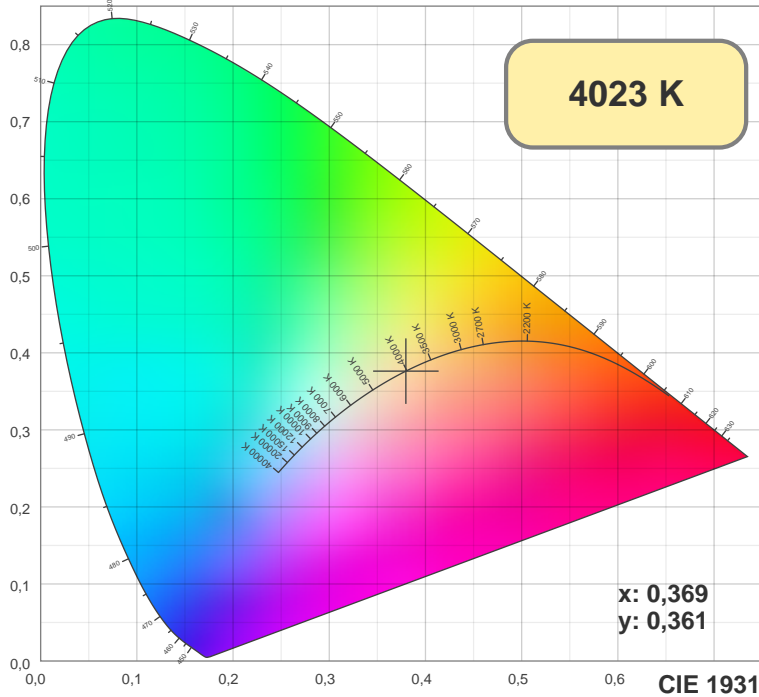


Мощность

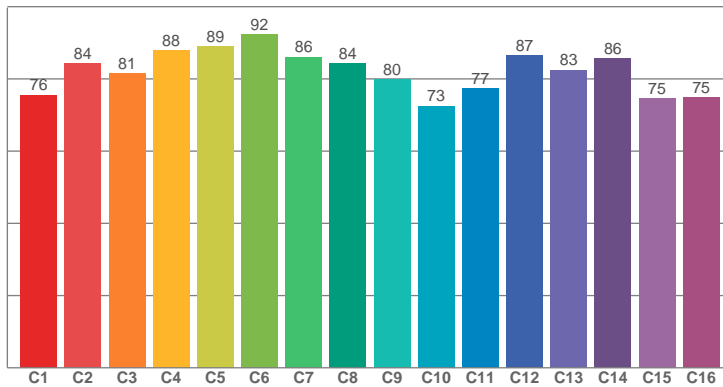
Напряжение: 219 V

Ток: 0,120 A

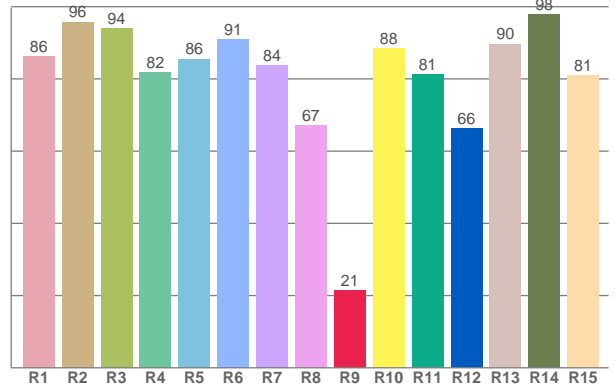




TM30: 82,1



CRI: 85,6 (R1-R8)



CRI R values, only R1-R8 are used to calculate final CRI value

R1	R2	R3	R4	R5	R6	R7	R8	R9	R10	R11	R12	R13	R14	R15
86,25	95,77	93,97	81,84	85,55	90,91	83,78	67,08	21,43	88,38	81,28	66,25	89,66	97,78	80,96

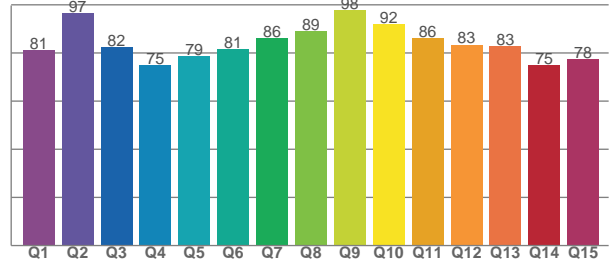
TM30 C values, 16 binned values out of total of 99 C values

C1	C2	C3	C4	C5	C6	C7	C8	C9	C10	C11	C12	C13	C14	C15	C16
75,59	84,31	81,46	87,87	88,99	92,22	86,12	84,29	79,82	72,51	77,36	86,59	82,52	85,70	74,68	74,81

CQS Q values

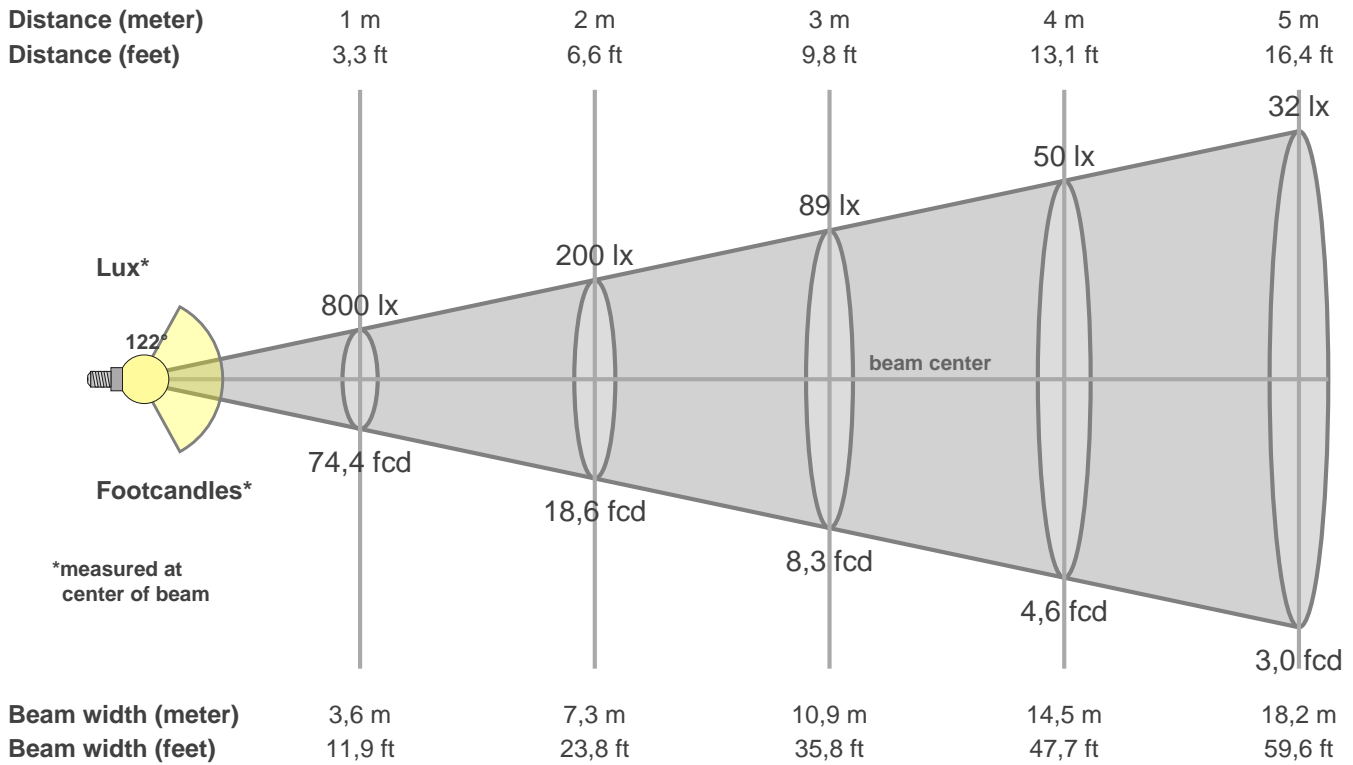
Q1	Q2	Q3	Q4	Q5	Q6	Q7	Q8	Q9	Q10	Q11	Q12	Q13	Q14	Q15
81,02	96,52	82,28	74,96	78,65	81,42	86,09	89,20	97,79	91,86	86,32	83,44	82,81	74,95	77,51

CQS: 82,9



Color parameters

CCT	CRI	CRI R9	TM30 Rf	TM30 Rg	CQS	x	y	u	v	Duv
4023 K	85,6	21,4	82,1	93,4	82,9	0,4	0,4	0,2	0,3	0,0041



**Intensities in 0° c-plane**

0°	9°	18°	27°	36°	45°	54°	63°	72°	81°	90°	99°	108°	117°	126°	135°	144°	153°	162°	171°
800	783	755	706	650	585	501	416	323	228	170	136	99	67	45	50	55	57	59	60
100%	98%	94%	88%	81%	73%	63%	52%	40%	28%	21%	17%	12%	8%	6%	6%	7%	7%	7%	8%

**Intensities in 90° c-plane**

0°	9°	18°	27°	36°	45°	54°	63°	72°	81°	90°	99°	108°	117°	126°	135°	144°	153°	162°	171°
800	796	764	716	642	552	448	331	205	85	20	23	24	25	30	37	49	55	61	66
100%	99%	95%	89%	80%	69%	56%	41%	26%	11%	3%	3%	3%	3%	4%	5%	6%	7%	8%	8%

**Intensities in 180° c-plane**

0°	9°	18°	27°	36°	45°	54°	63°	72°	81°	90°	99°	108°	117°	126°	135°	144°	153°	162°	171°
800	787	756	706	644	577	503	416	324	230	165	134	99	64	45	47	53	58	56	59
100%	98%	94%	88%	80%	72%	63%	52%	40%	29%	21%	17%	12%	8%	6%	6%	7%	7%	7%	7%

**Intensities in 270° c-plane**

0°	9°	18°	27°	36°	45°	54°	63°	72°	81°	90°	99°	108°	117°	126°	135°	144°	153°	162°	171°
800	798	765	713	641	553	448	332	205	86	25	21	23	26	32	39	48	55	62	64
100%	100%	96%	89%	80%	69%	56%	41%	26%	11%	3%	3%	3%	3%	4%	5%	6%	7%	8%	8%

Beam angle 50%	Field angle 10%	Cutoff angle 2,5%	Intensity ratio in 120° cone	Intensity ratio in 90° cone
122,4°	198,9°	360,0°	62,7%	41,6%