

Эффективность света:

110 Lumen/Watt

Качество света:

CRI: 86,2

Цветовая температура:

4011 K

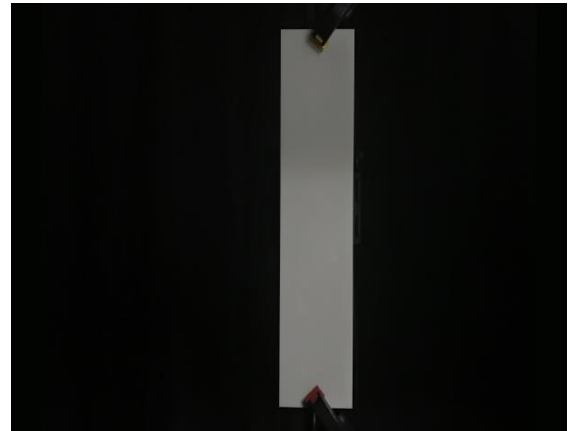
Поток: 1347 lm

Интенс.: 392 cd

Мощн.: 12,3 W

КПД: 0,89

4 PLANES



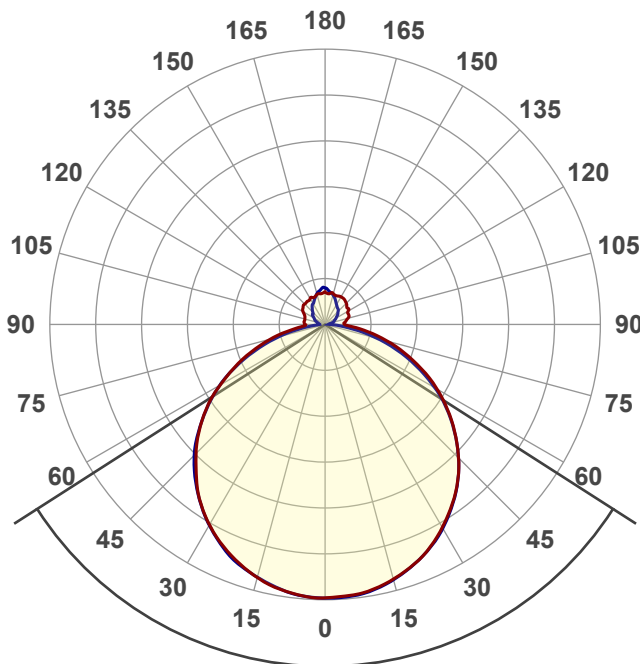
Название продукта:

ViLED CC

03-У-М-12-590.130.15-4-0-65

Дата и время:

22.12.2017 11:04:43



Угол пучка

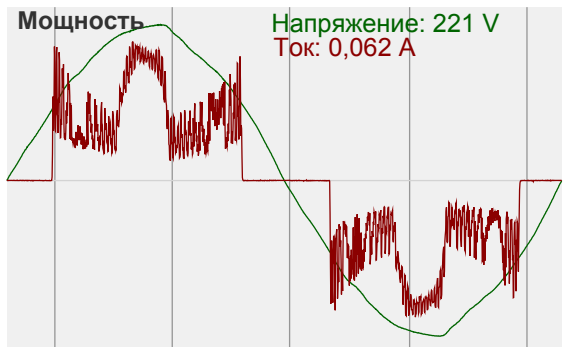
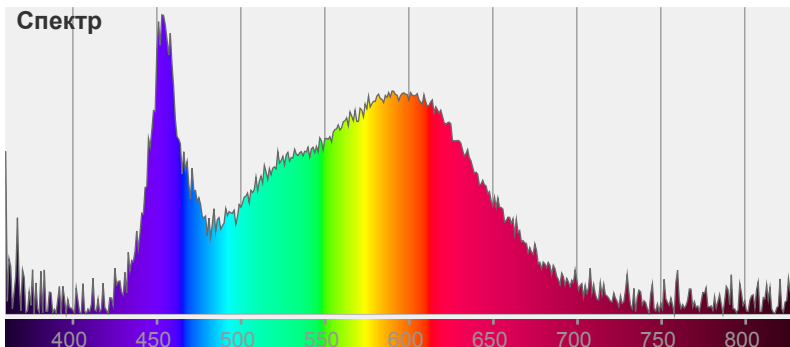
114,7°

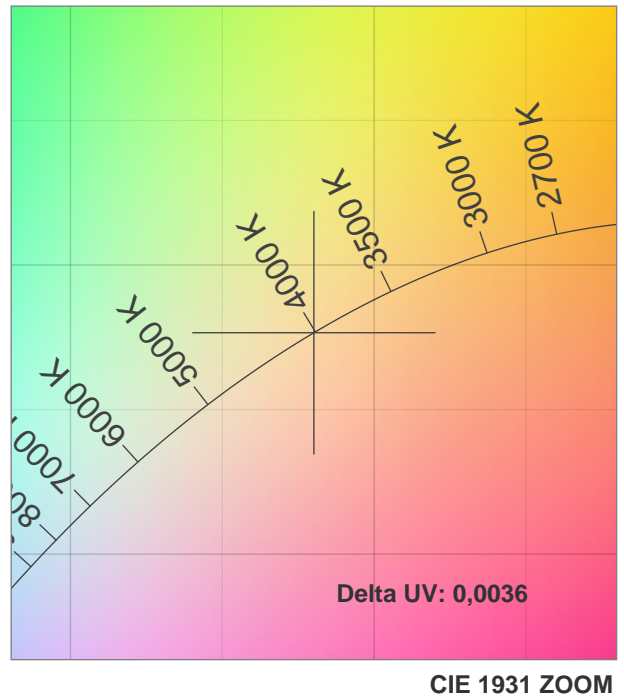
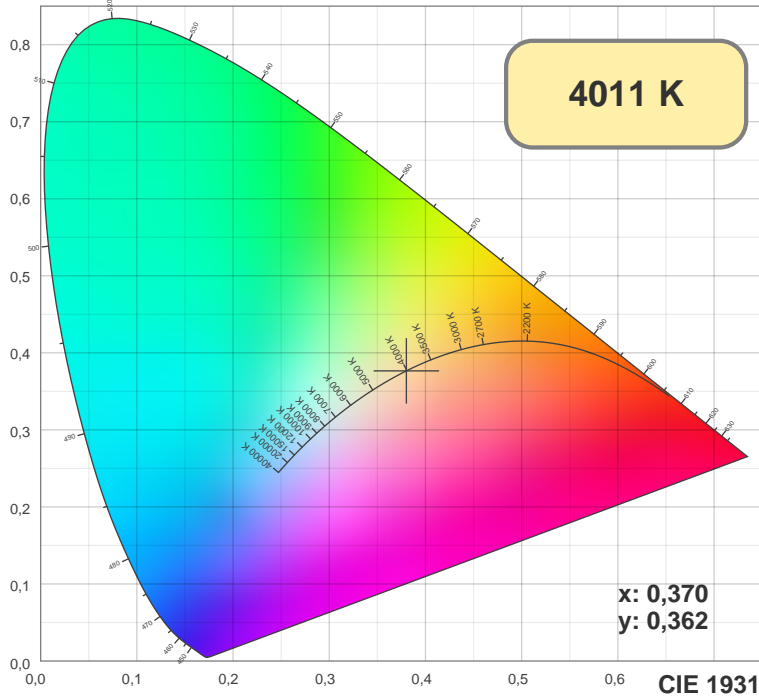
Цвет



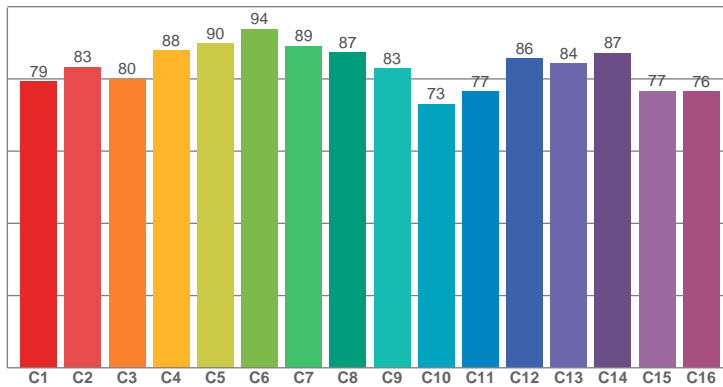
CIE1931
x: 0,370
y: 0,362

Спектр

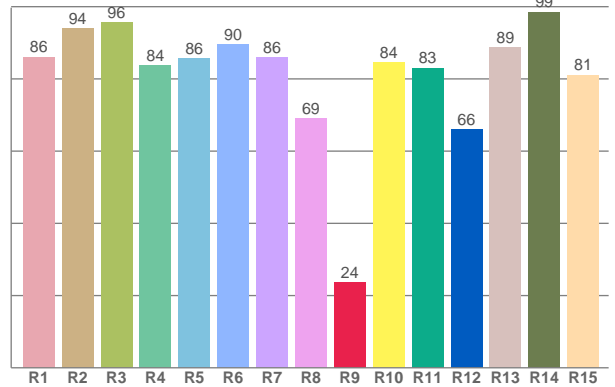




TM30: 83,1



CRI: 86,2 (R1-R8)



CRI R values, only R1-R8 are used to calculate final CRI value

R1	R2	R3	R4	R5	R6	R7	R8	R9	R10	R11	R12	R13	R14	R15
86,07	94,06	95,65	83,74	85,61	89,57	85,89	69,09	23,66	84,47	83,01	65,94	88,72	98,53	81,08

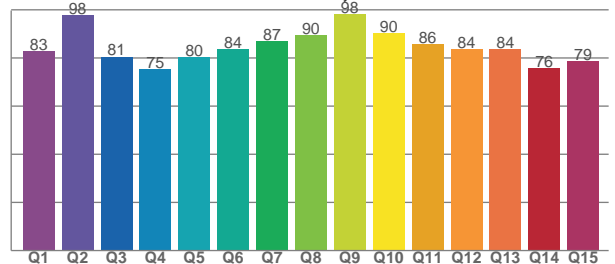
TM30 C values, 16 binned values out of total of 99 C values

C1	C2	C3	C4	C5	C6	C7	C8	C9	C10	C11	C12	C13	C14	C15	C16
79,34	83,29	79,96	87,83	89,79	93,86	89,14	87,28	82,83	73,06	76,62	85,70	84,32	87,17	76,64	76,48

CQS Q values

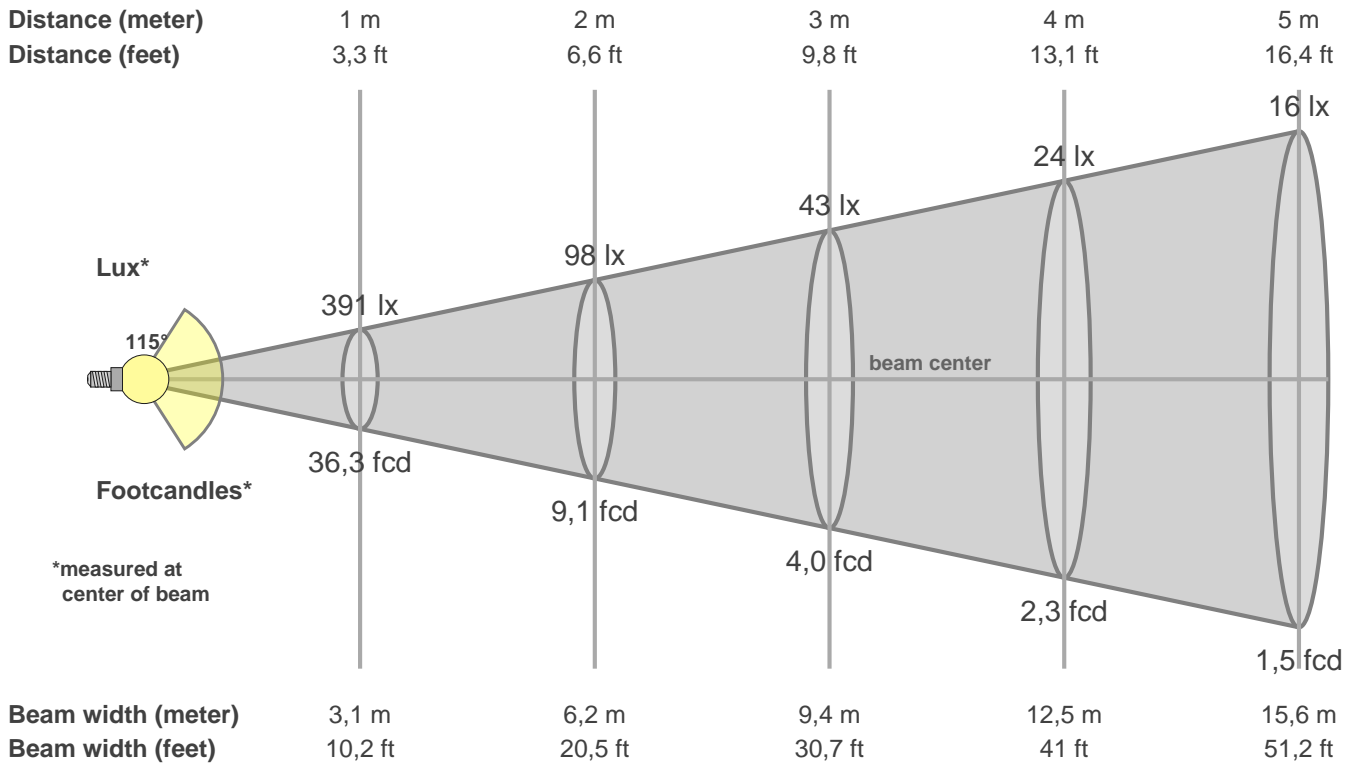
Q1	Q2	Q3	Q4	Q5	Q6	Q7	Q8	Q9	Q10	Q11	Q12	Q13	Q14	Q15
82,96	97,83	80,52	75,34	80,47	83,67	87,14	89,64	98,13	90,36	85,71	83,67	83,52	75,77	78,52

CQS: 83,5



Color parameters

CCT	CRI	CRI R9	TM30 Rf	TM30 Rg	CQS	x	y	u	v	Duv
4011 K	86,2	23,7	83,1	95,1	83,5	0,4	0,4	0,2	0,3	0,0036



Intensities in 0° c-plane

0°	9°	18°	27°	36°	45°	54°	63°	72°	81°	90°	99°	108°	117°	126°	135°	144°	153°	162°	171°
391	387	372	347	312	270	221	167	111	60	29	30	36	37	40	43	45	45	45	45
100%	99%	95%	89%	80%	69%	56%	43%	28%	15%	7%	8%	9%	9%	10%	11%	12%	12%	11%	12%

Intensities in 90° c-plane

0°	9°	18°	27°	36°	45°	54°	63°	72°	81°	90°	99°	108°	117°	126°	135°	144°	153°	162°	171°
391	388	372	348	313	270	219	161	98	40	9	8	13	17	22	26	30	35	42	47
100%	99%	95%	89%	80%	69%	56%	41%	25%	10%	2%	2%	3%	4%	6%	7%	8%	9%	11%	12%

Intensities in 180° c-plane

0°	9°	18°	27°	36°	45°	54°	63°	72°	81°	90°	99°	108°	117°	126°	135°	144°	153°	162°	171°
391	385	368	342	307	261	212	154	98	49	29	30	31	34	39	41	42	43	43	44
100%	98%	94%	87%	78%	67%	54%	39%	25%	13%	7%	8%	8%	9%	10%	11%	11%	11%	11%	11%

Intensities in 270° c-plane

0°	9°	18°	27°	36°	45°	54°	63°	72°	81°	90°	99°	108°	117°	126°	135°	144°	153°	162°	171°
391	385	369	343	307	265	211	154	90	33	9	10	13	17	22	25	31	36	43	49
100%	98%	94%	88%	79%	68%	54%	39%	23%	8%	2%	2%	3%	4%	6%	6%	8%	9%	11%	13%

Beam angle 50%	Field angle 10%	Cutoff angle 2,5%	Intensity ratio in 120° cone	Intensity ratio in 90° cone
114,7°	360,0°	360,0°	66,5%	45,0%