

Эффективность света:

142 Lumen/Watt

Качество света:

CRI: 85,5

Цветовая температура:

4056 K

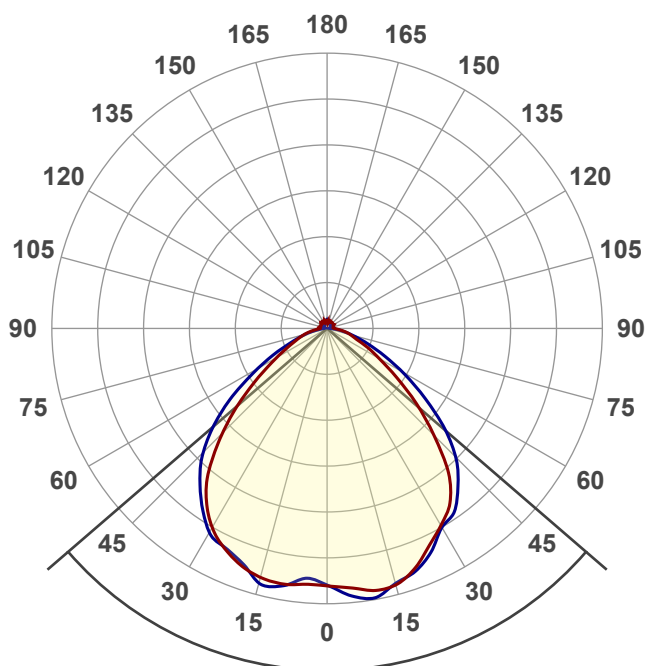
Поток: 1732 lm

Интенс.: 700 cd

Мощн.: 12,2 W

КПД: 0,89

4 PLANES



Угол пучка

98,4°

Цвет

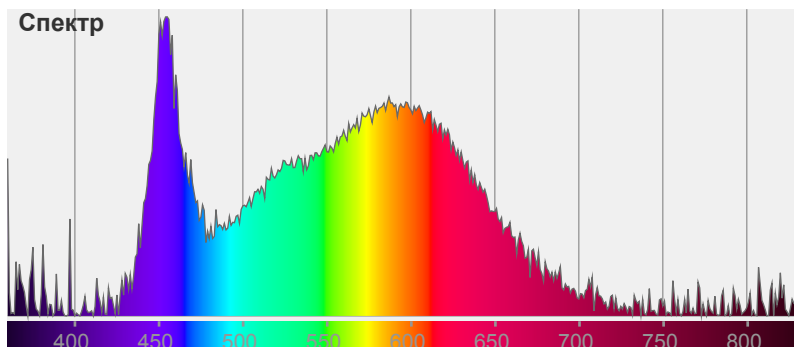


CIE1931

x: 0,364

y: 0,358

Спектр



Название продукта:

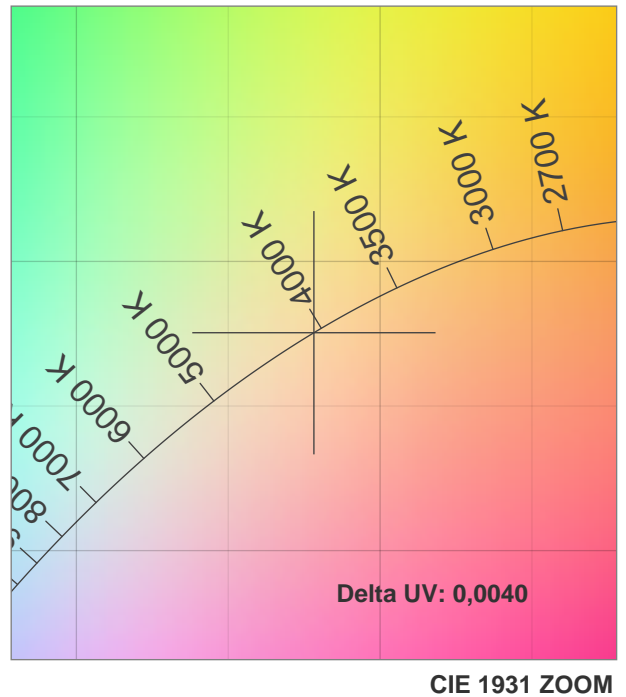
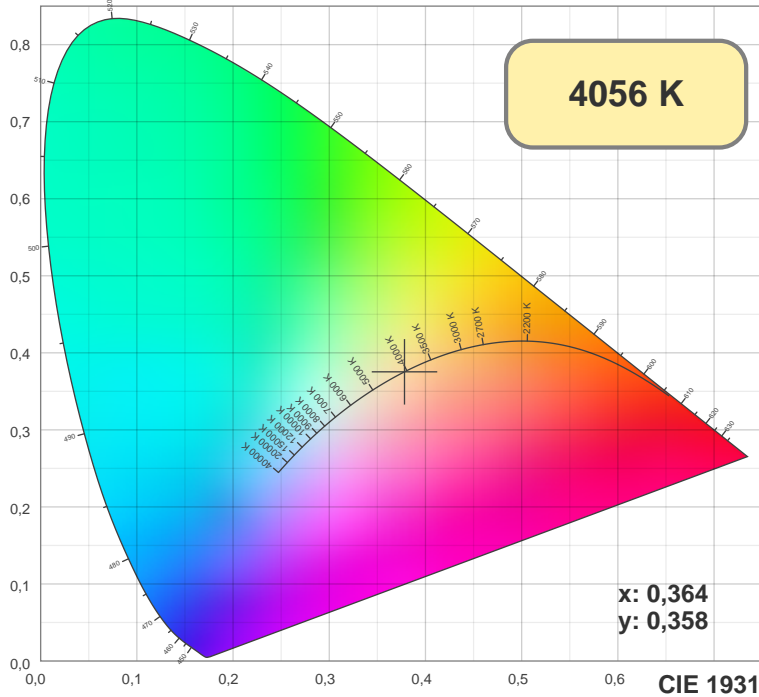
ViLED CC

03-Y-K-12-590.130.15-4-0-65

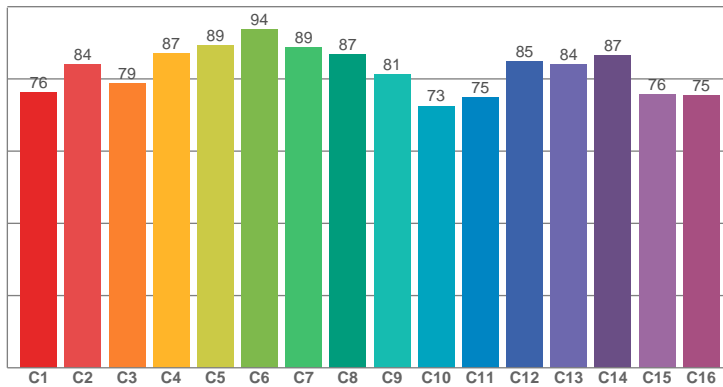
Дата и время:

22.12.2017 12:15:59

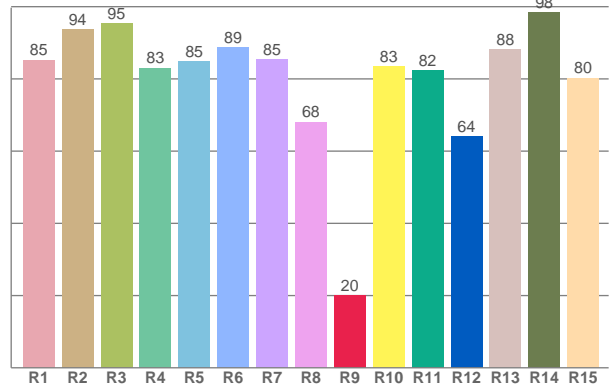




TM30: 82,3



CRI: 85,5 (R1-R8)



CRI R values, only R1-R8 are used to calculate final CRI value

R1	R2	R3	R4	R5	R6	R7	R8	R9	R10	R11	R12	R13	R14	R15
85,27	93,60	95,33	83,00	84,88	88,68	85,44	68,06	20,03	83,43	82,28	64,01	88,07	98,38	80,23

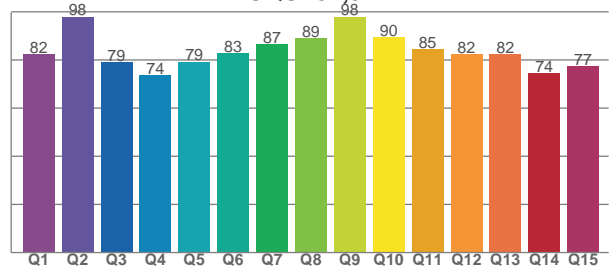
TM30 C values, 16 binned values out of total of 99 C values

C1	C2	C3	C4	C5	C6	C7	C8	C9	C10	C11	C12	C13	C14	C15	C16
76,30	84,05	78,69	87,11	89,30	93,64	88,75	86,78	81,22	72,53	74,91	84,86	84,06	86,50	75,79	75,40

CQS Q values

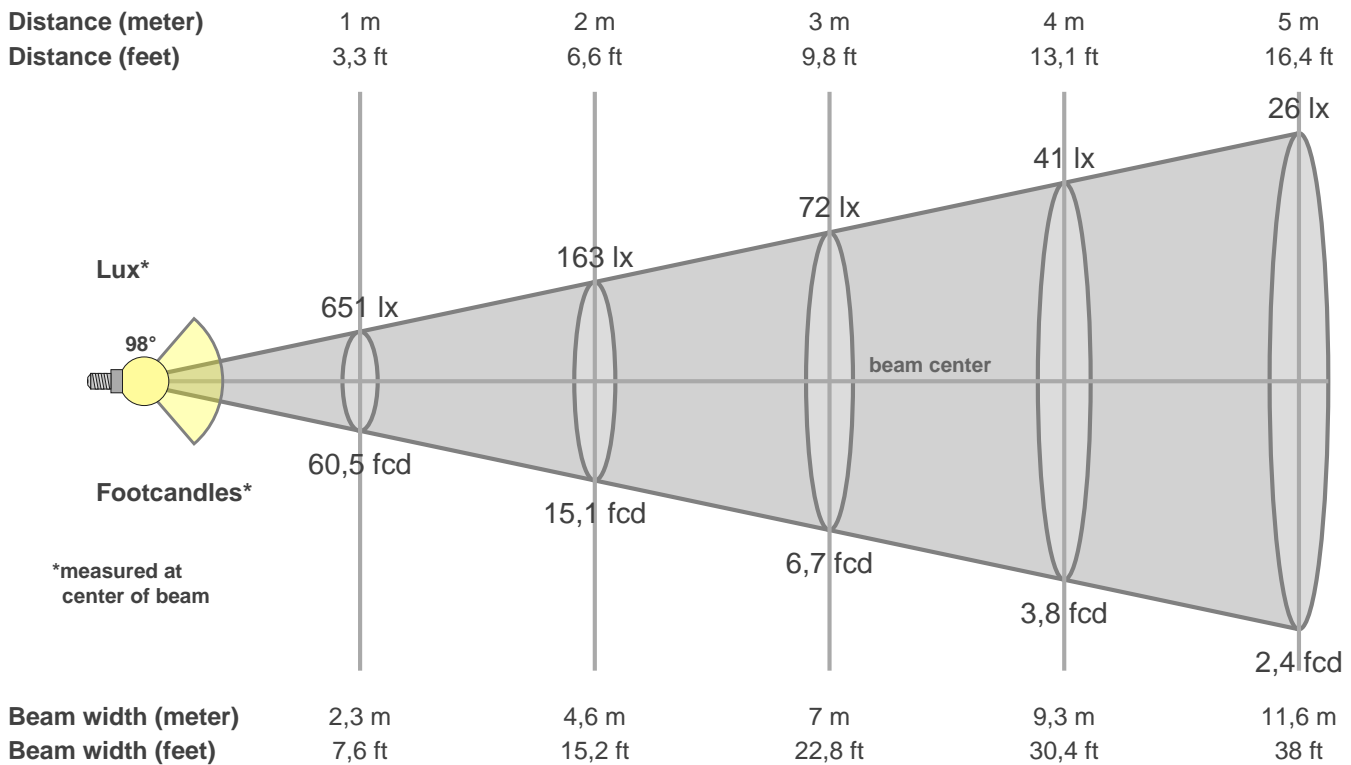
Q1	Q2	Q3	Q4	Q5	Q6	Q7	Q8	Q9	Q10	Q11	Q12	Q13	Q14	Q15
82,42	98,01	79,19	73,69	79,26	82,73	86,54	89,23	98,00	89,60	84,61	82,41	82,26	74,38	77,47

CQS: 82,5



Color parameters

CCT	CRI	CRI R9	TM30 Rf	TM30 Rg	CQS	x	y	u	v	Duv
4056 K	85,5	20,0	82,3	94,8	82,5	0,4	0,4	0,2	0,3	0,0040



Intensities in 0° c-plane

0°	5°	10°	15°	20°	25°	30°	35°	40°	45°	50°	55°	60°	65°	70°	75°	80°	85°	90°	95°
651	659	673	671	647	609	576	541	478	383	294	213	153	112	78	61	46	29	19	16
100%	101%	103%	103%	99%	94%	88%	83%	73%	59%	45%	33%	23%	17%	12%	9%	7%	4%	3%	2%

Intensities in 90° c-plane

0°	5°	10°	15°	20°	25°	30°	35°	40°	45°	50°	55°	60°	65°	70°	75°	80°	85°	90°	95°
651	678	692	668	654	623	582	562	515	460	383	297	220	155	105	68	41	22	8	7
100%	104%	106%	103%	100%	96%	89%	86%	79%	71%	59%	46%	34%	24%	16%	10%	6%	3%	1%	1%

Intensities in 180° c-plane

0°	5°	10°	15°	20°	25°	30°	35°	40°	45°	50°	55°	60°	65°	70°	75°	80°	85°	90°	95°
651	650	656	651	637	613	580	531	462	374	287	209	149	108	80	61	42	27	19	19
100%	100%	101%	100%	98%	94%	89%	82%	71%	58%	44%	32%	23%	17%	12%	9%	7%	4%	3%	3%

Intensities in 270° c-plane

0°	5°	10°	15°	20°	25°	30°	35°	40°	45°	50°	55°	60°	65°	70°	75°	80°	85°	90°	95°
651	636	661	665	631	612	594	551	500	442	368	285	203	139	89	56	32	15	9	7
100%	98%	102%	102%	97%	94%	91%	85%	77%	68%	56%	44%	31%	21%	14%	9%	5%	2%	1%	1%

Beam angle 50%	Field angle 10%	Cutoff angle 2,5%	Intensity ratio in 120° cone	Intensity ratio in 90° cone
98,4°	146,9°	360,0°	81,7%	60,1%