

Эффективность света:

142 Lumen/Watt

Качество света:

CRI: 86,0

Цветовая температура:

4058 K

Поток: 1705 lm

Интенс.: 726 cd

Мощн.: 12,0 W

КПД: 0,88

4 PLANES



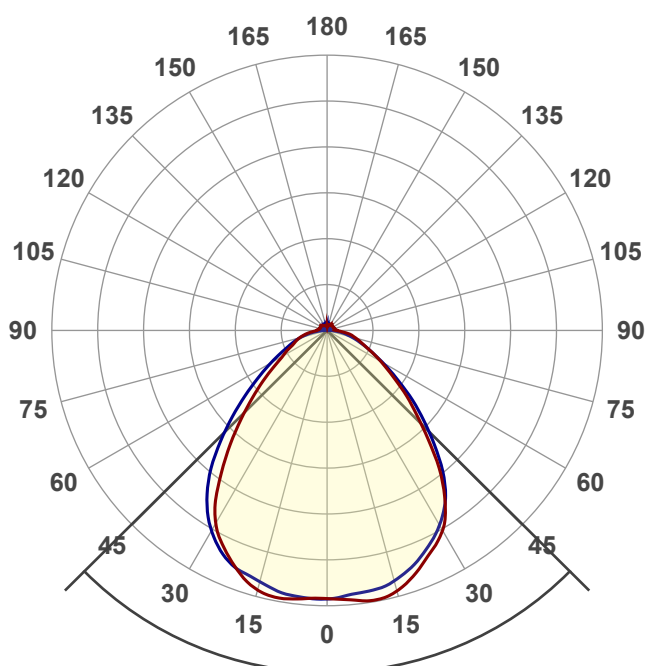
Название продукта:

ViLED CC

03-У-К-12-1190.65.15-4-0-65

Дата и время:

07.12.2017 13:10:29



Угол пучка

90,4°

Цвет

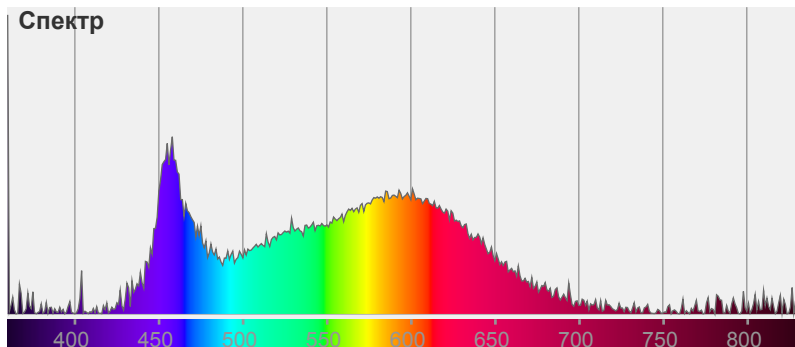


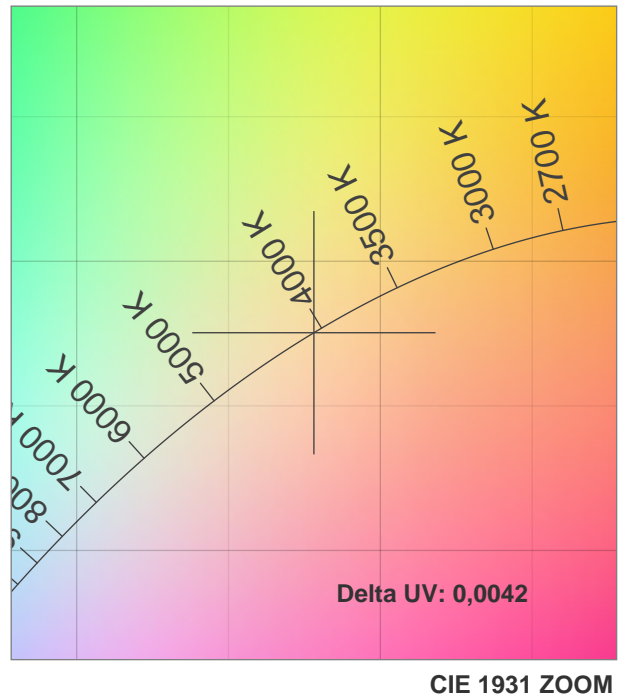
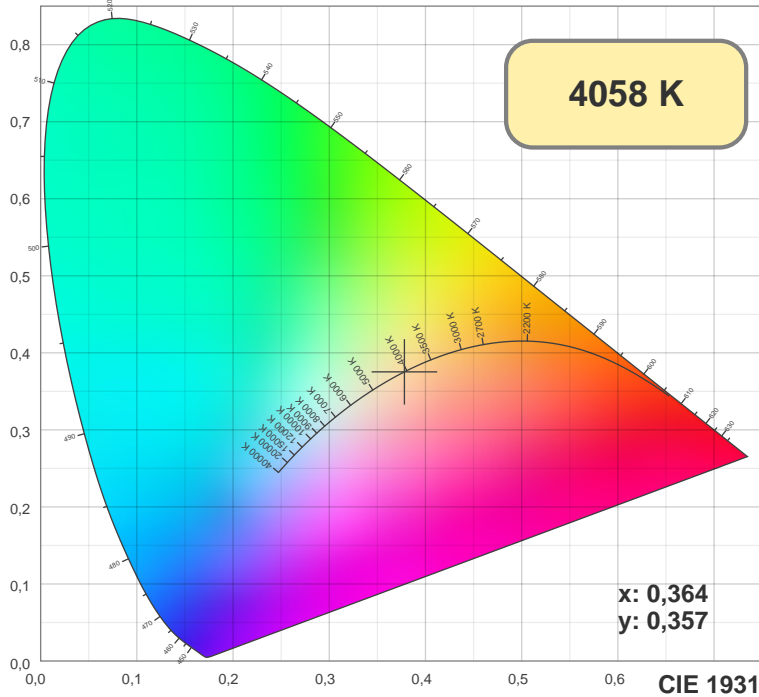
CIE1931

x: 0,364

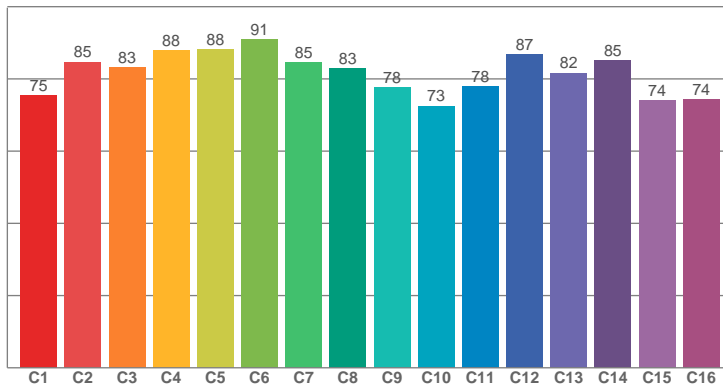
y: 0,357

Спектр

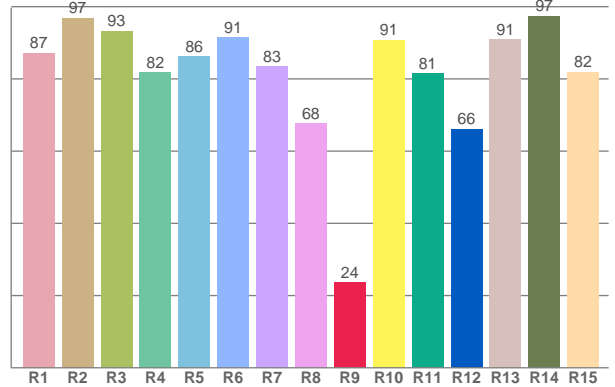




TM30: 81,7



CRI: 86,0 (R1-R8)



CRI R values, only R1-R8 are used to calculate final CRI value

R1	R2	R3	R4	R5	R6	R7	R8	R9	R10	R11	R12	R13	R14	R15
87,16	96,88	93,31	81,69	86,13	91,39	83,37	67,75	23,73	90,79	81,44	66,12	90,92	97,42	81,91

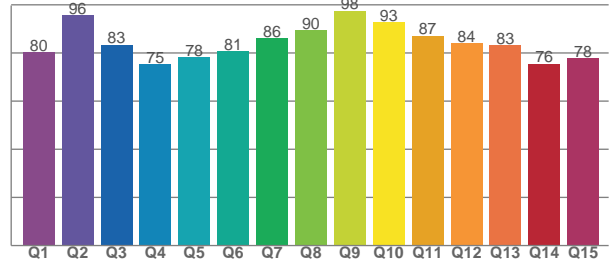
TM30 C values, 16 binned values out of total of 99 C values

C1	C2	C3	C4	C5	C6	C7	C8	C9	C10	C11	C12	C13	C14	C15	C16
75,49	84,70	83,21	87,81	88,16	90,94	84,64	82,85	77,69	72,52	77,89	86,74	81,67	85,08	74,01	74,25

CQS Q values

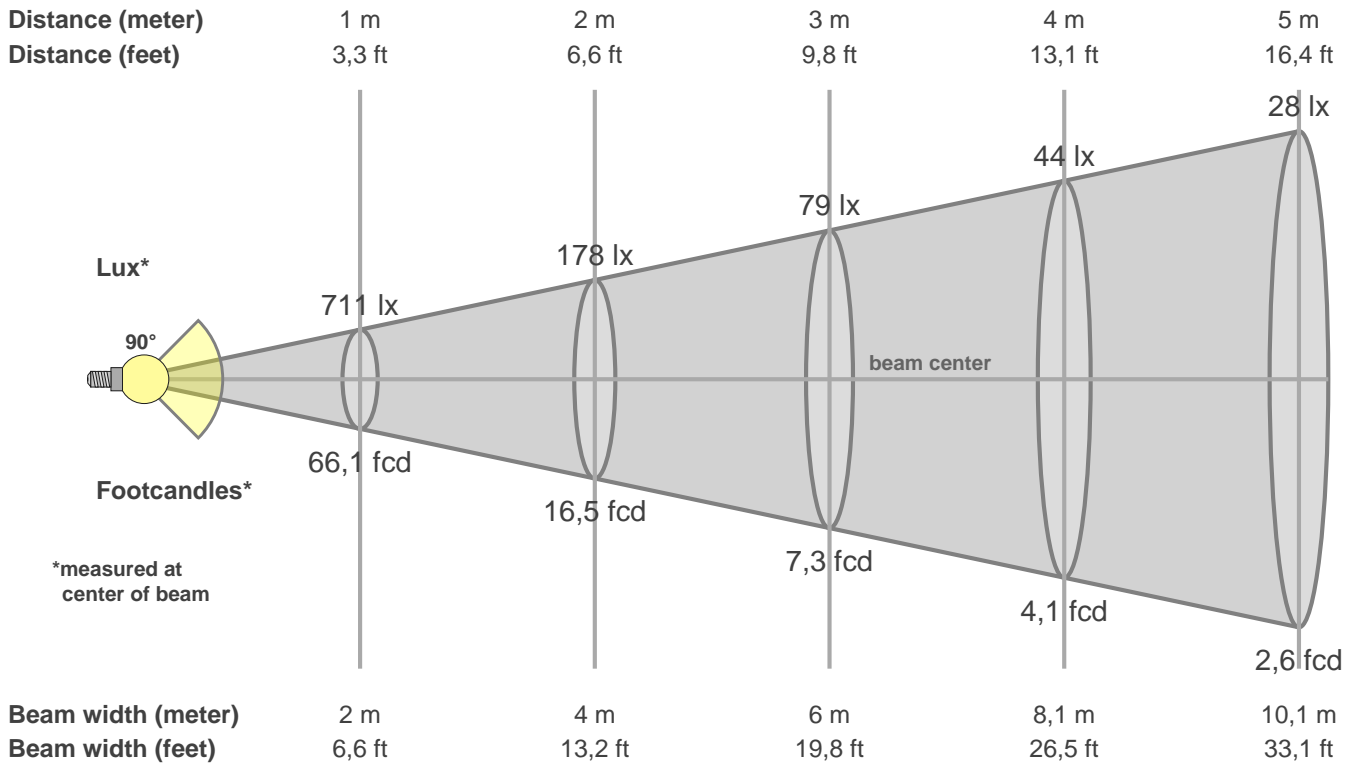
Q1	Q2	Q3	Q4	Q5	Q6	Q7	Q8	Q9	Q10	Q11	Q12	Q13	Q14	Q15
80,43	95,86	83,47	75,30	78,30	80,76	86,02	89,58	97,57	92,92	87,21	84,25	83,36	75,55	77,80

CQS: 83,1



Color parameters

CCT	CRI	CRI R9	TM30 Rf	TM30 Rg	CQS	x	y	u	v	Duv
4058 K	86,0	23,7	81,7	92,9	83,1	0,4	0,4	0,2	0,3	0,0042



Intensities in 0° c-plane

0°	5°	10°	15°	20°	25°	30°	35°	40°	45°	50°	55°	60°	65°	70°	75°	80°	85°	90°	95°
711	718	726	715	686	650	611	545	454	357	281	215	166	126	98	79	63	40	25	23
100%	101%	102%	101%	96%	91%	86%	77%	64%	50%	39%	30%	23%	18%	14%	11%	9%	6%	4%	3%

Intensities in 90° c-plane

0°	5°	10°	15°	20°	25°	30°	35°	40°	45°	50°	55°	60°	65°	70°	75°	80°	85°	90°	95°
711	704	700	688	665	633	596	547	473	385	305	229	171	126	93	67	46	25	11	7
100%	99%	98%	97%	94%	89%	84%	77%	67%	54%	43%	32%	24%	18%	13%	9%	6%	4%	2%	1%

Intensities in 180° c-plane

0°	5°	10°	15°	20°	25°	30°	35°	40°	45°	50°	55°	60°	65°	70°	75°	80°	85°	90°	95°
711	715	722	712	683	642	589	504	404	314	240	179	136	110	91	76	58	40	27	24
100%	101%	101%	100%	96%	90%	83%	71%	57%	44%	34%	25%	19%	15%	13%	11%	8%	6%	4%	3%

Intensities in 270° c-plane

0°	5°	10°	15°	20°	25°	30°	35°	40°	45°	50°	55°	60°	65°	70°	75°	80°	85°	90°	95°
711	712	706	691	678	655	613	555	480	388	302	229	173	130	99	74	49	24	8	7
100%	100%	99%	97%	95%	92%	86%	78%	67%	55%	43%	32%	24%	18%	14%	10%	7%	3%	1%	1%

Beam angle 50%	Field angle 10%	Cutoff angle 2,5%	Intensity ratio in 120° cone	Intensity ratio in 90° cone
90,4°	151,0°	209,3°	80,7%	61,7%