

Эффективность света:

**142 Lumen/Watt**

Качество света:

**CRI: 85,3**

Цветовая температура:

**4043 K**

**Поток: 4923 lm**

**Интенс.: 1999 cd**

**Мощн.: 34,7 W**

**КПД: 0,90**

4 PLANES



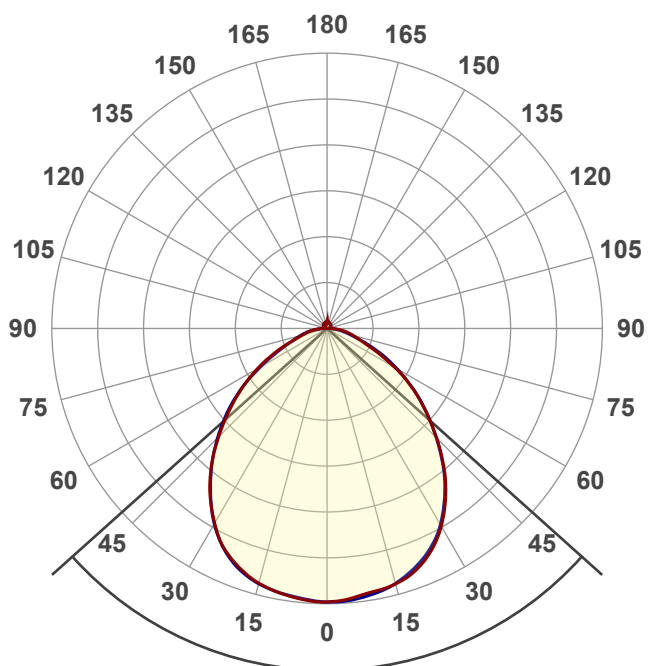
Название продукта:

**VILED CC**

**02-Y-A-36-590.590.15-4-0-65**

Дата и время:

**18.11.2017 12:35:27**



Угол пучка

**96,3°**

Цвет

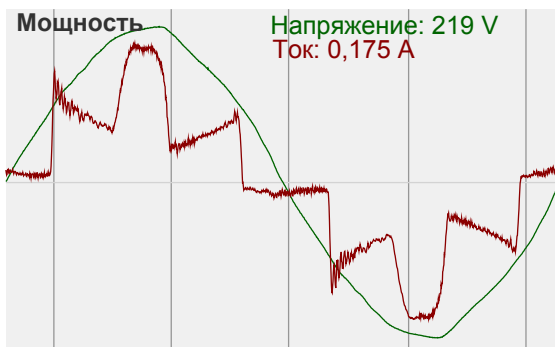
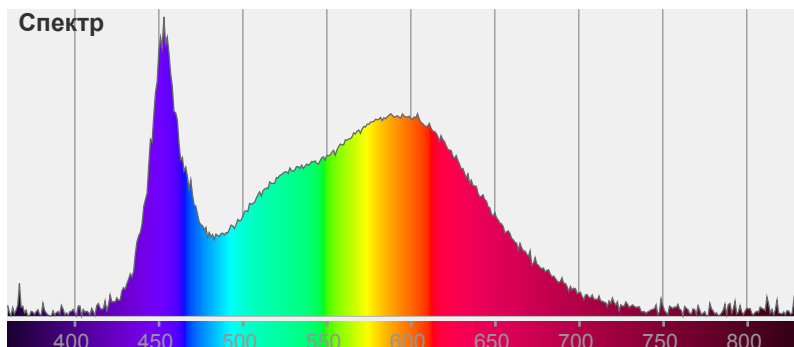


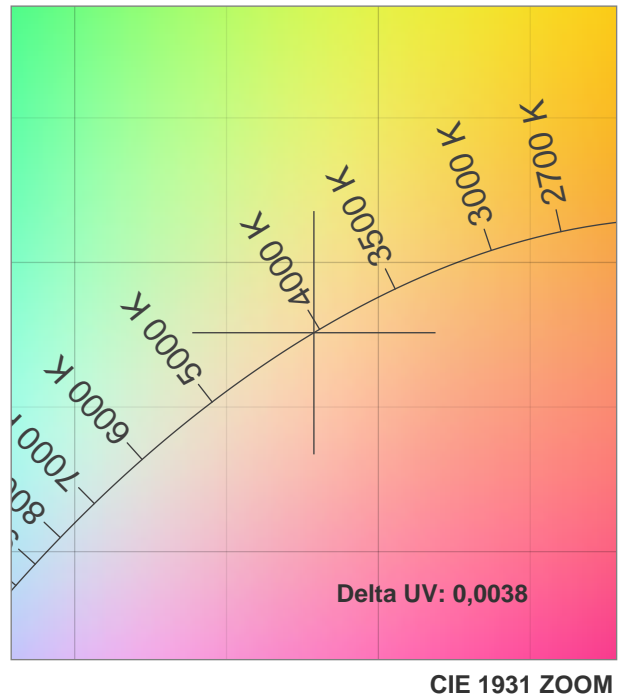
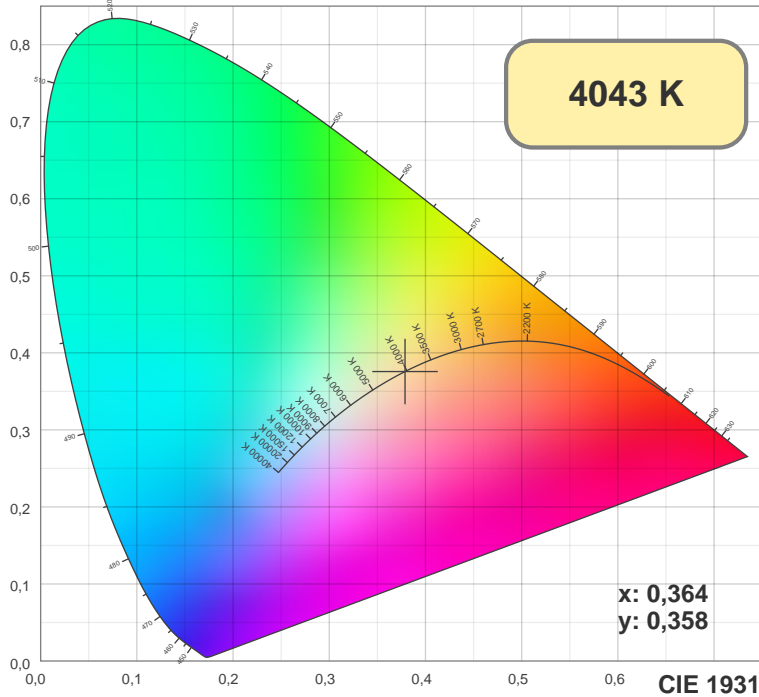
CIE1931

x: 0,364

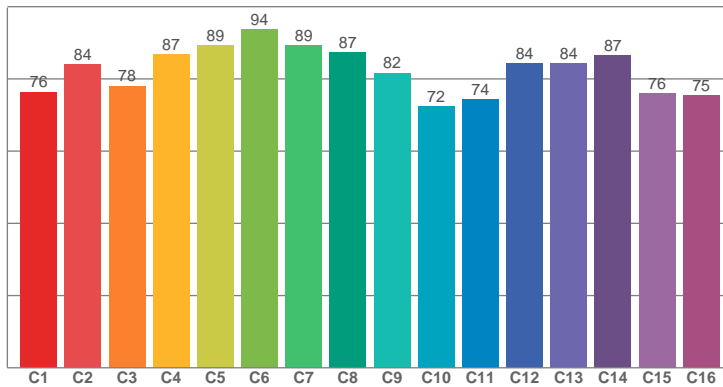
y: 0,358

Спектр

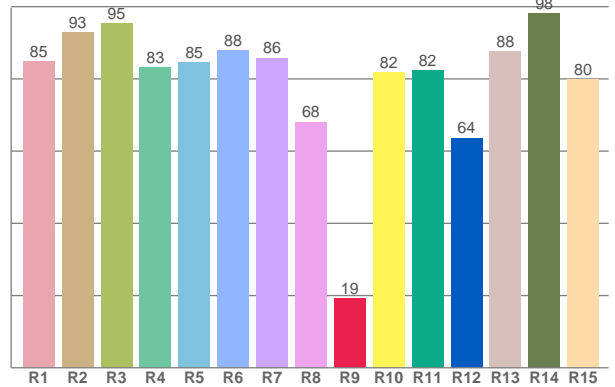




**TM30: 82,3**



**CRI: 85,3 (R1-R8)**



CRI R values, only R1-R8 are used to calculate final CRI value

R1	R2	R3	R4	R5	R6	R7	R8	R9	R10	R11	R12	R13	R14	R15
84,89	92,93	95,38	83,13	84,54	87,96	85,81	68,09	19,12	81,84	82,28	63,62	87,52	98,22	79,86

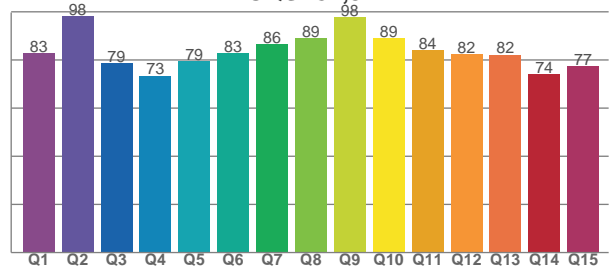
TM30 C values, 16 binned values out of total of 99 C values

C1	C2	C3	C4	C5	C6	C7	C8	C9	C10	C11	C12	C13	C14	C15	C16
76,39	83,99	78,02	86,79	89,24	93,75	89,26	87,25	81,68	72,40	74,32	84,27	84,38	86,56	76,01	75,49

CQS Q values

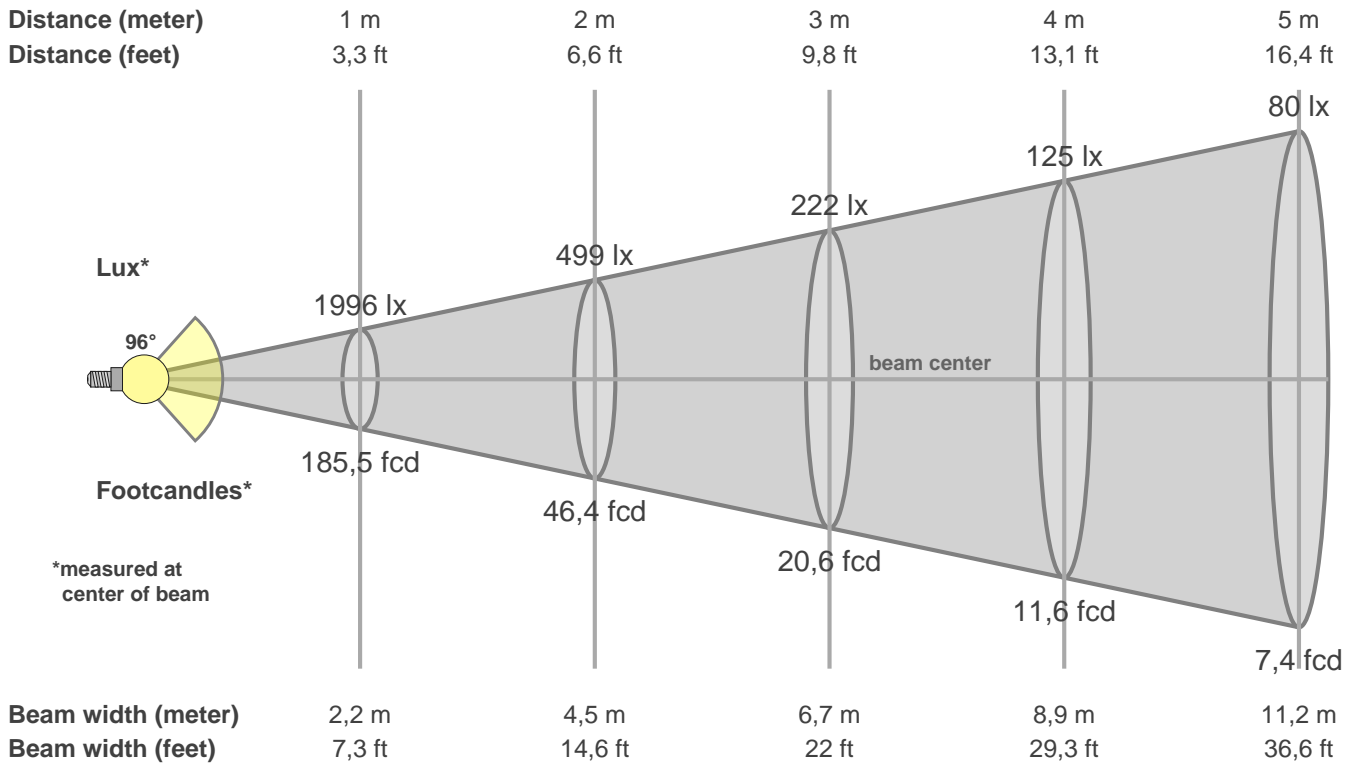
Q1	Q2	Q3	Q4	Q5	Q6	Q7	Q8	Q9	Q10	Q11	Q12	Q13	Q14	Q15
82,68	98,31	78,58	73,45	79,34	82,84	86,44	89,22	97,85	89,03	84,22	82,28	82,23	74,11	77,36

**CQS: 82,3**



**Color parameters**

CCT	CRI	CRI R9	TM30 Rf	TM30 Rg	CQS	x	y	u	v	Duv
4043 K	85,3	19,1	82,3	95,1	82,3	0,4	0,4	0,2	0,3	0,0038



**Intensities in 0° c-plane**

0°	5°	10°	15°	20°	25°	30°	35°	40°	45°	50°	55°	60°	65°	70°	75°	80°	85°	90°	95°
1996	1979	1953	1930	1880	1791	1665	1507	1328	1132	942	762	576	398	272	197	142	85	35	19
100%	99%	98%	97%	94%	90%	83%	76%	66%	57%	47%	38%	29%	20%	14%	10%	7%	4%	2%	1%

**Intensities in 90° c-plane**

0°	5°	10°	15°	20°	25°	30°	35°	40°	45°	50°	55°	60°	65°	70°	75°	80°	85°	90°	95°
1996	1992	1967	1927	1862	1774	1653	1496	1320	1129	945	766	591	430	283	176	114	69	29	18
100%	100%	99%	97%	93%	89%	83%	75%	66%	57%	47%	38%	30%	22%	14%	9%	6%	3%	1%	1%

**Intensities in 180° c-plane**

0°	5°	10°	15°	20°	25°	30°	35°	40°	45°	50°	55°	60°	65°	70°	75°	80°	85°	90°	95°
1996	1987	1963	1925	1861	1772	1642	1489	1314	1122	935	759	588	425	281	187	136	81	32	21
100%	100%	98%	96%	93%	89%	82%	75%	66%	56%	47%	38%	29%	21%	14%	9%	7%	4%	2%	1%

**Intensities in 270° c-plane**

0°	5°	10°	15°	20°	25°	30°	35°	40°	45°	50°	55°	60°	65°	70°	75°	80°	85°	90°	95°
1996	1982	1961	1929	1871	1777	1646	1483	1311	1132	950	761	565	398	276	202	142	76	28	21
100%	99%	98%	97%	94%	89%	82%	74%	66%	57%	48%	38%	28%	20%	14%	10%	7%	4%	1%	1%

Beam angle 50%	Field angle 10%	Cutoff angle 2,5%	Intensity ratio in 120° cone	Intensity ratio in 90° cone
96,3°	150,4°	197,2°	81,5%	59,6%