

Эффективность света:

140 Lumen/Watt

Качество света:

CRI: 85,5

Цветовая температура:

4068 K

Поток: 3277 lm

Интенс.: 1320 cd

Мощн.: 23,4 W

КПД: 0,91

4 PLANES



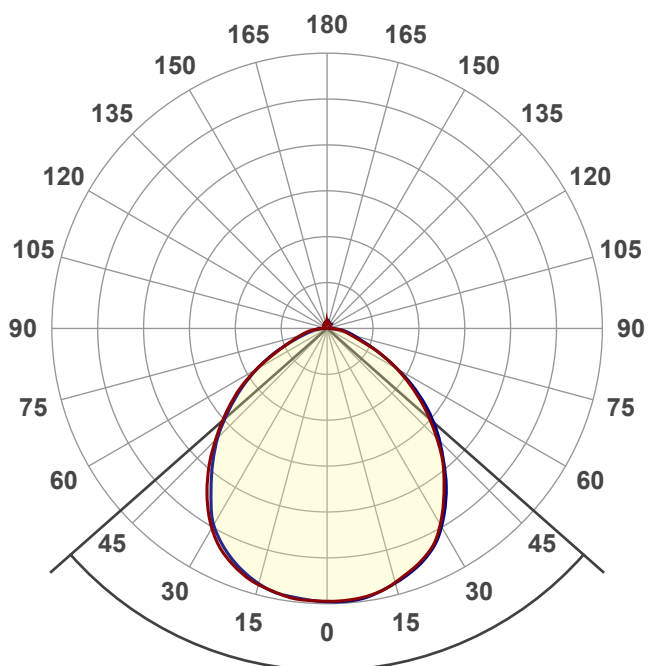
Название продукта:

**ViLED CC**

**02-Y-A-24-590.590.15-4-0-65**

Дата и время:

**18.11.2017 18:09:32**



Угол пучка

**97,2°**

Цвет

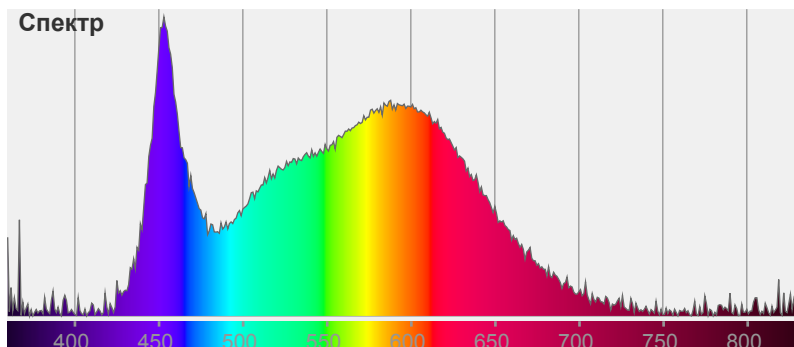


CIE1931

x: 0,364

y: 0,359

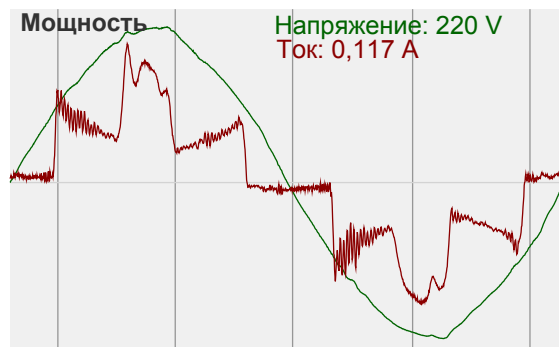
Спектр

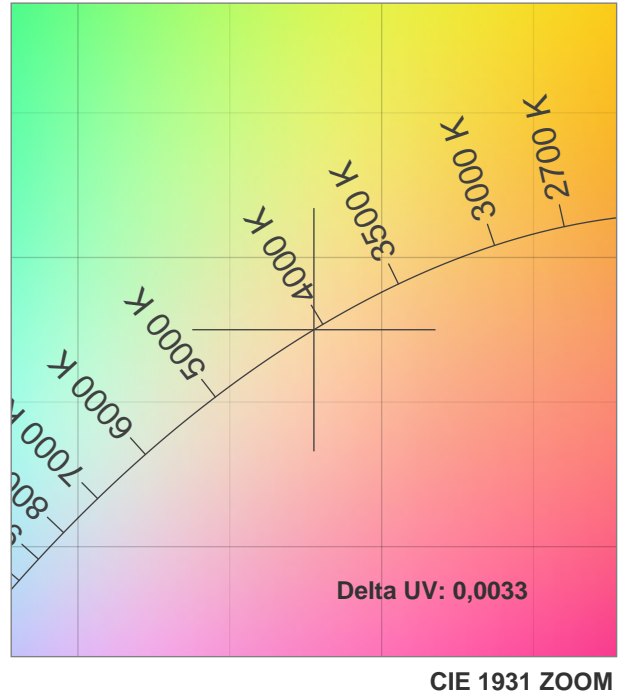
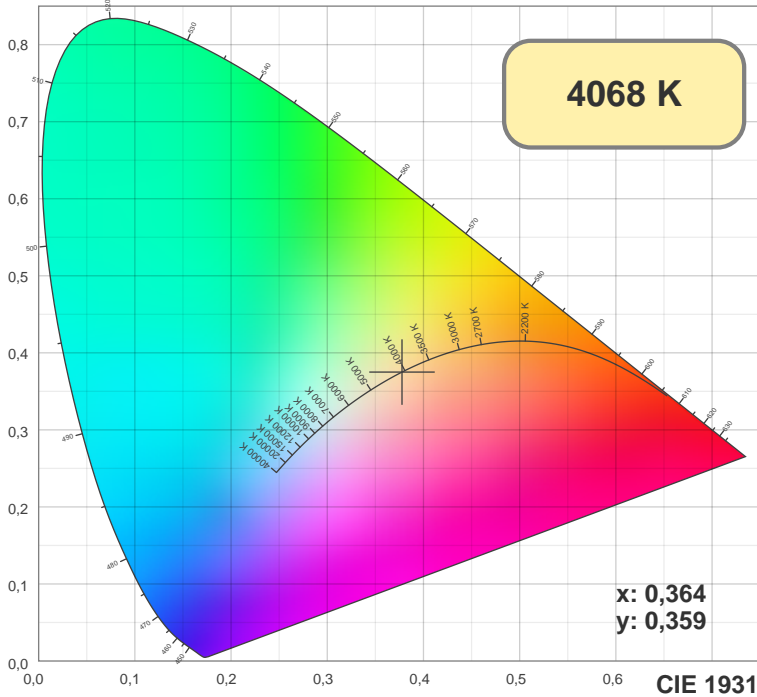


Мощность

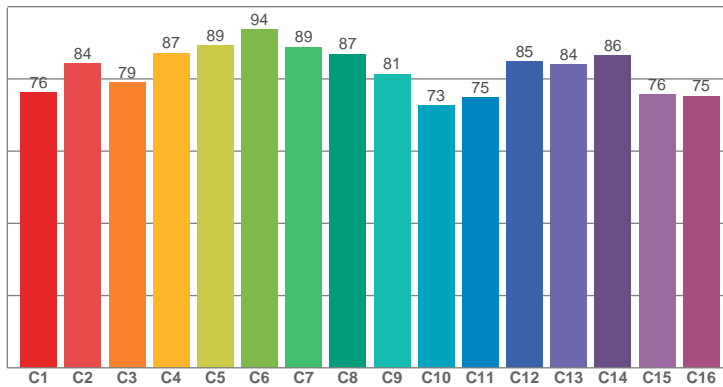
Напряжение: 220 V

Ток: 0,117 A

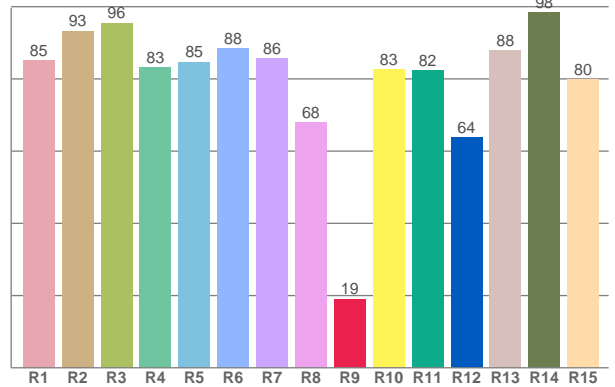




TM30: 82,4



CRI: 85,5 (R1-R8)



CRI R values, only R1-R8 are used to calculate final CRI value

R1	R2	R3	R4	R5	R6	R7	R8	R9	R10	R11	R12	R13	R14	R15
85,09	93,29	95,51	83,12	84,67	88,45	85,72	67,98	19,08	82,62	82,39	63,70	87,83	98,36	79,81

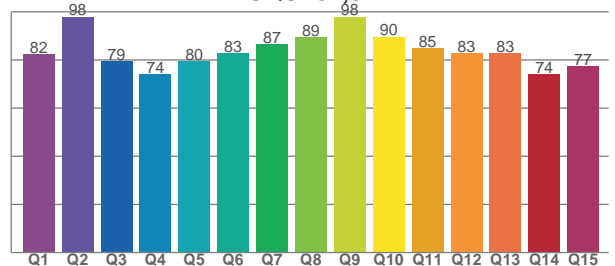
TM30 C values, 16 binned values out of total of 99 C values

C1	C2	C3	C4	C5	C6	C7	C8	C9	C10	C11	C12	C13	C14	C15	C16
76,29	84,27	78,95	87,22	89,34	93,70	88,88	86,91	81,36	72,65	74,96	84,87	84,04	86,42	75,66	75,30

CQS Q values

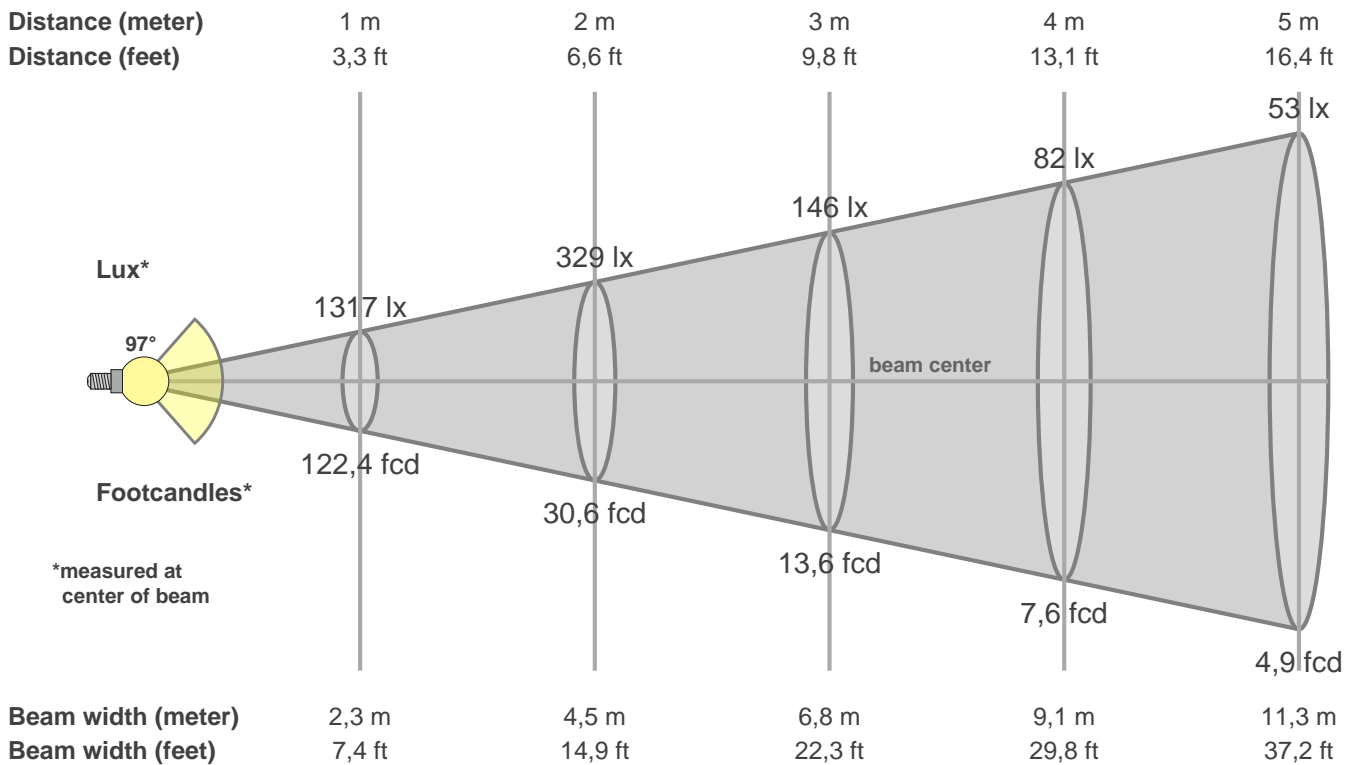
Q1	Q2	Q3	Q4	Q5	Q6	Q7	Q8	Q9	Q10	Q11	Q12	Q13	Q14	Q15
82,31	97,99	79,42	74,05	79,55	82,85	86,57	89,37	97,97	89,71	84,97	83,00	82,76	74,22	77,35

CQS: 82,6



Color parameters

CCT	CRI	CRI R9	TM30 Rf	TM30 Rg	CQS	x	y	u	v	Duv
4068 K	85,5	19,1	82,4	94,8	82,6	0,4	0,4	0,2	0,3	0,0033



**Intensities in 0° c-plane**

0°	5°	10°	15°	20°	25°	30°	35°	40°	45°	50°	55°	60°	65°	70°	75°	80°	85°	90°	95°
1317	1313	1299	1268	1227	1175	1090	982	872	749	626	505	389	278	173	115	87	54	15	11
100%	100%	99%	96%	93%	89%	83%	75%	66%	57%	48%	38%	30%	21%	13%	9%	7%	4%	1%	1%

**Intensities in 90° c-plane**

0°	5°	10°	15°	20°	25°	30°	35°	40°	45°	50°	55°	60°	65°	70°	75°	80°	85°	90°	95°
1317	1317	1301	1271	1234	1182	1102	998	883	768	651	525	394	278	189	136	98	60	17	11
100%	100%	99%	96%	94%	90%	84%	76%	67%	58%	49%	40%	30%	21%	14%	10%	7%	5%	1%	1%

**Intensities in 180° c-plane**

0°	5°	10°	15°	20°	25°	30°	35°	40°	45°	50°	55°	60°	65°	70°	75°	80°	85°	90°	95°
1317	1314	1301	1278	1242	1188	1110	1007	889	762	639	521	394	271	188	136	99	60	22	13
100%	100%	99%	97%	94%	90%	84%	76%	68%	58%	48%	40%	30%	21%	14%	10%	8%	5%	2%	1%

**Intensities in 270° c-plane**

0°	5°	10°	15°	20°	25°	30°	35°	40°	45°	50°	55°	60°	65°	70°	75°	80°	85°	90°	95°
1317	1310	1300	1273	1229	1169	1092	977	861	747	622	505	391	280	179	114	77	49	19	13
100%	99%	99%	97%	93%	89%	83%	74%	65%	57%	47%	38%	30%	21%	14%	9%	6%	4%	1%	1%

Beam angle 50%	Field angle 10%	Cutoff angle 2,5%	Intensity ratio in 120° cone	Intensity ratio in 90° cone
97,2°	150,5°	267,5°	81,5%	59,4%