

Эффективность света:



Качество света:



Цветовая температура:



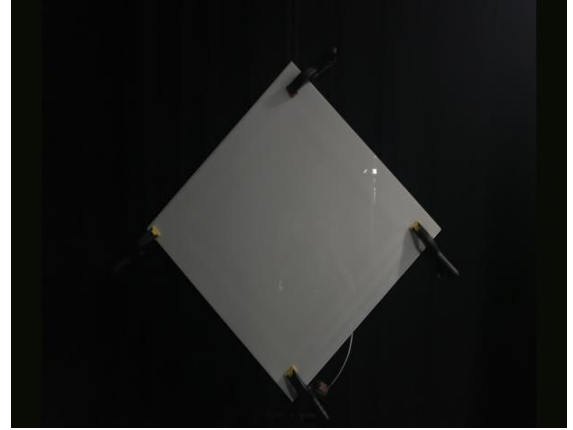
Поток: 2641 lm

Интенс.: 829 cd

Мощн.: 23,3 W

КПД: 0,91

4 PLANES



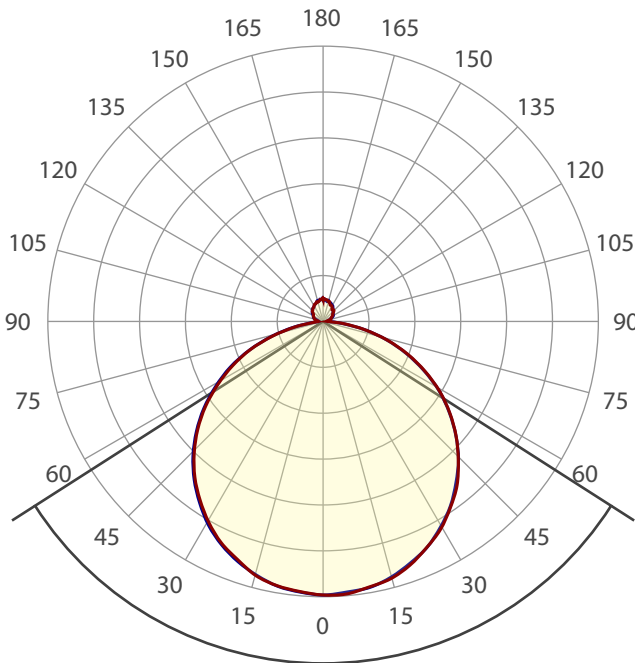
Название продукта:

ViLED CC

01-У-М-24-590.590.15-4-0-65

Дата и время:

06.11.2017 13:18:45

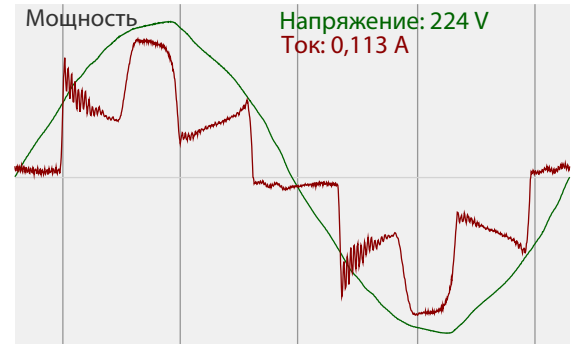
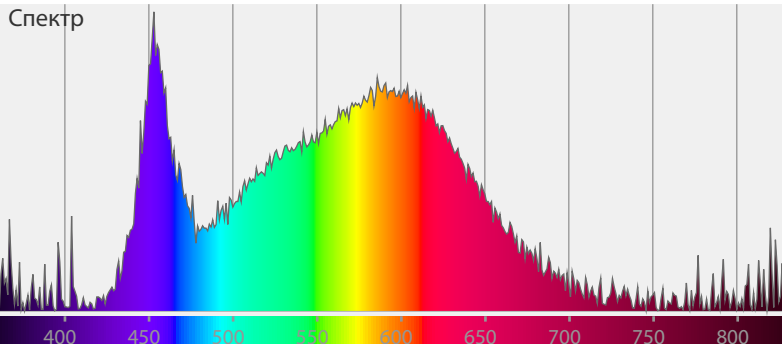


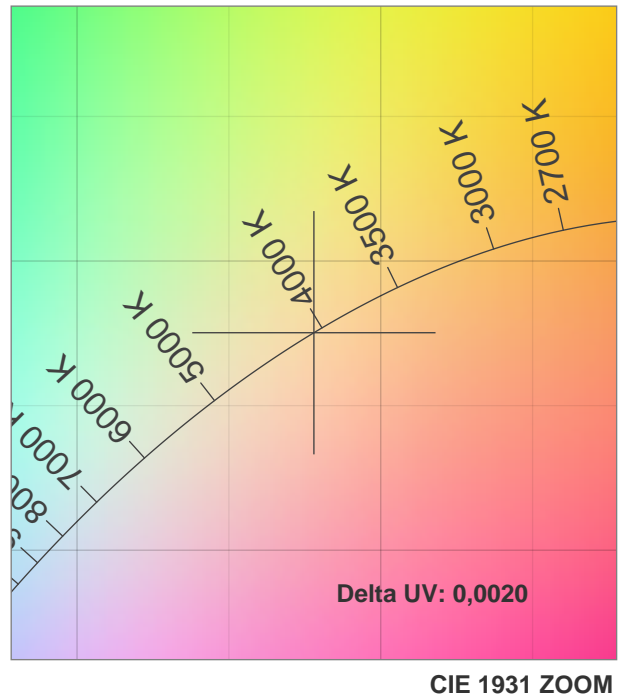
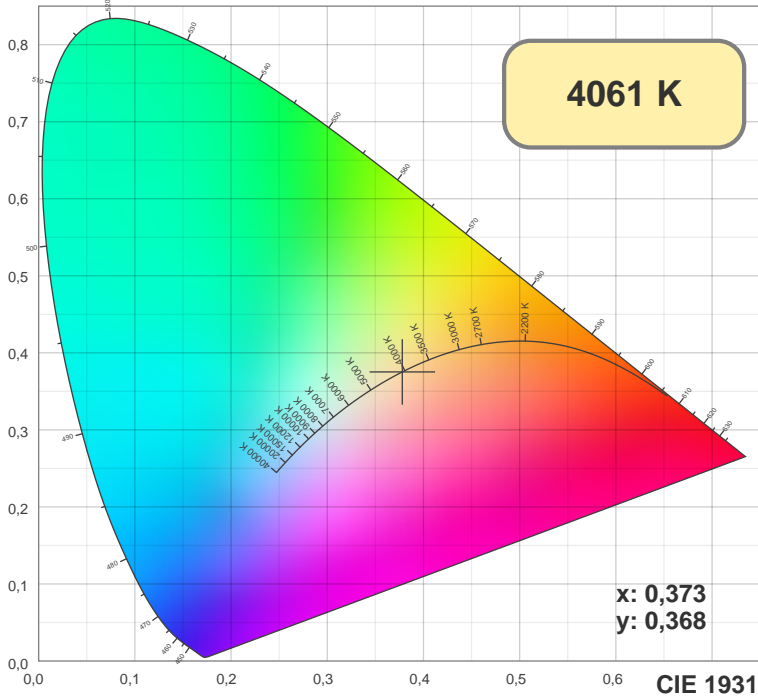
Угол пучка

Цвет

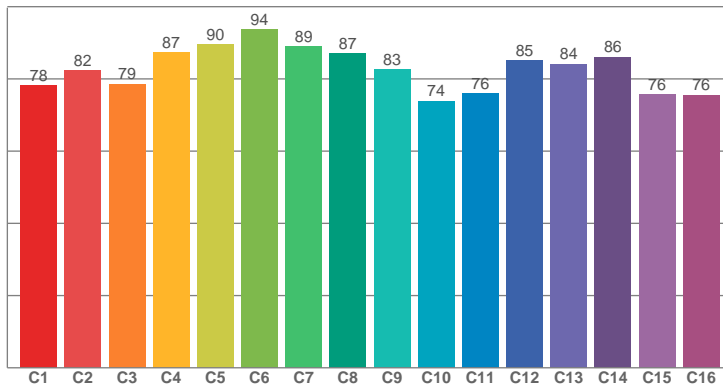


CIE1931
x: 0,373
y: 0,368

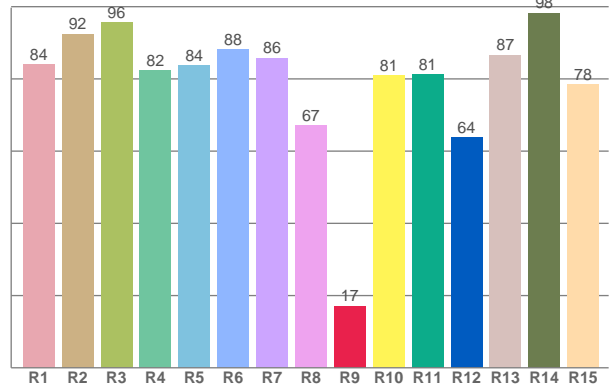




TM30: 82,5



CRI: 84,9 (R1-R8)



CRI R values, only R1-R8 are used to calculate final CRI value

R1	R2	R3	R4	R5	R6	R7	R8	R9	R10	R11	R12	R13	R14	R15
84,01	92,49	95,72	82,38	83,64	88,11	85,77	67,03	17,16	80,94	81,24	63,85	86,62	98,29	78,38

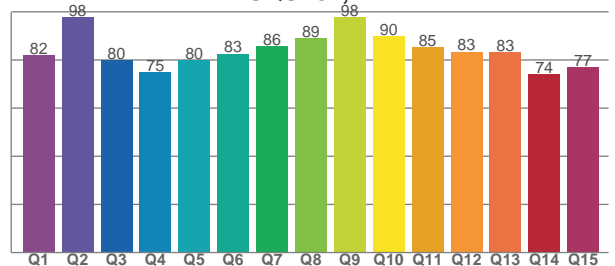
TM30 C values, 16 binned values out of total of 99 C values

C1	C2	C3	C4	C5	C6	C7	C8	C9	C10	C11	C12	C13	C14	C15	C16
78,26	82,33	78,60	87,28	89,61	93,76	88,93	87,01	82,68	73,89	75,91	85,21	84,16	86,08	75,73	75,58

CQS Q values

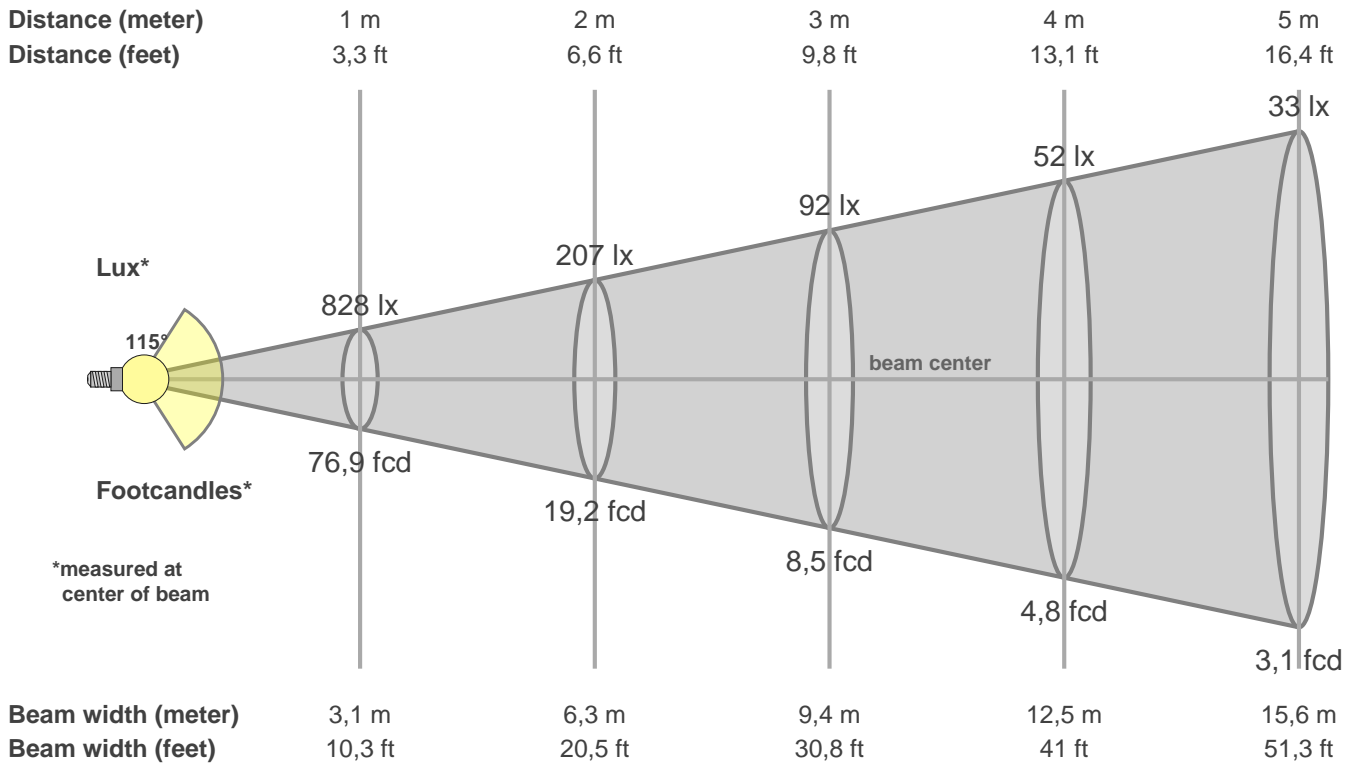
Q1	Q2	Q3	Q4	Q5	Q6	Q7	Q8	Q9	Q10	Q11	Q12	Q13	Q14	Q15
82,14	97,82	80,01	74,80	79,81	82,62	85,81	89,02	97,89	89,83	85,27	83,46	83,10	74,00	77,11

CQS: 82,7



Color parameters

CCT	CRI	CRI R9	TM30 Rf	TM30 Rg	CQS	x	y	u	v	Duv
4061 K	84,9	17,2	82,5	94,6	82,7	0,4	0,4	0,2	0,3	0,0020



Intensities in 0° c-plane

0°	5°	10°	15°	20°	25°	30°	35°	40°	45°	50°	55°	60°	65°	70°	75°	80°	85°	90°	95°
828	828	815	804	781	750	718	677	633	578	523	462	398	329	258	184	113	53	17	13
100%	100%	99%	97%	94%	91%	87%	82%	76%	70%	63%	56%	48%	40%	31%	22%	14%	6%	2%	2%

Intensities in 90° c-plane

0°	5°	10°	15°	20°	25°	30°	35°	40°	45°	50°	55°	60°	65°	70°	75°	80°	85°	90°	95°
828	822	817	800	777	751	715	675	628	579	522	461	397	325	254	183	111	49	18	13
100%	99%	99%	97%	94%	91%	86%	82%	76%	70%	63%	56%	48%	39%	31%	22%	13%	6%	2%	2%

Intensities in 180° c-plane

0°	5°	10°	15°	20°	25°	30°	35°	40°	45°	50°	55°	60°	65°	70°	75°	80°	85°	90°	95°
828	820	812	795	764	735	697	652	605	551	492	427	359	290	218	143	75	28	15	16
100%	99%	98%	96%	92%	89%	84%	79%	73%	67%	59%	52%	43%	35%	26%	17%	9%	3%	2%	2%

Intensities in 270° c-plane

0°	5°	10°	15°	20°	25°	30°	35°	40°	45°	50°	55°	60°	65°	70°	75°	80°	85°	90°	95°
828	822	812	793	768	739	702	657	609	555	496	432	364	295	220	145	78	30	14	15
100%	99%	98%	96%	93%	89%	85%	79%	74%	67%	60%	52%	44%	36%	27%	18%	9%	4%	2%	2%

Beam angle 50%	Field angle 10%	Cutoff angle 2,5%	Intensity ratio in 120° cone	Intensity ratio in 90° cone
114,8°	161,6°	360,0°	71,7%	48,5%