

Эффективность света:

144 Lumen/Watt

Качество света:

CRI: 82,2

Цветовая температура:

4215 K

Поток: 533 lm

Интенс.: 174 cd

Мощн.: 3,7 W

КПД: 0,88

4 PLANES



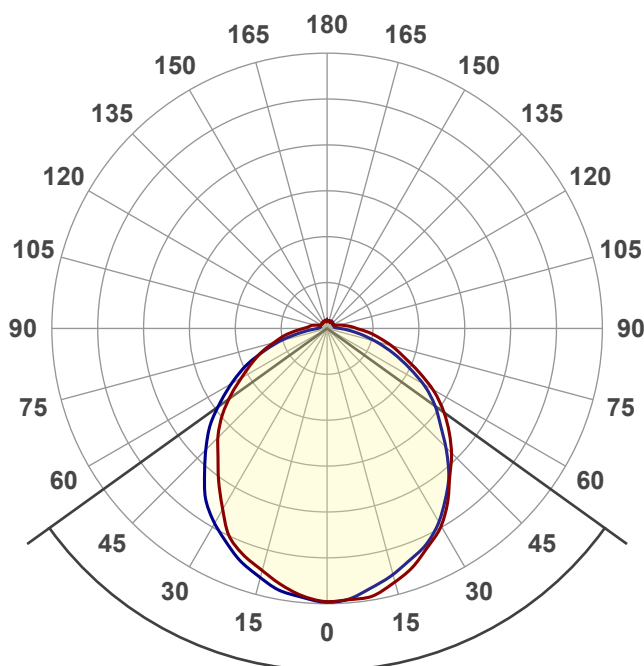
Название продукта:

ViLED CC

05-H-C-5-175.110.27-4-0-54

Дата и время:

10.04.2018 15:38:38



Угол пучка

108,6°

Цвет

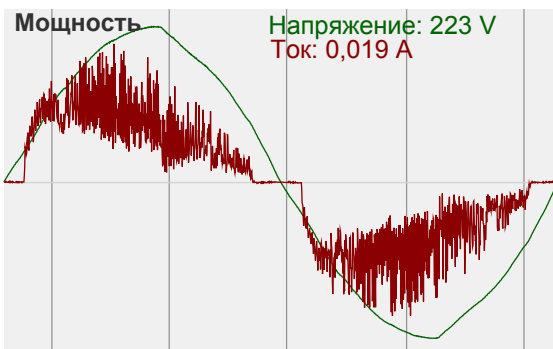
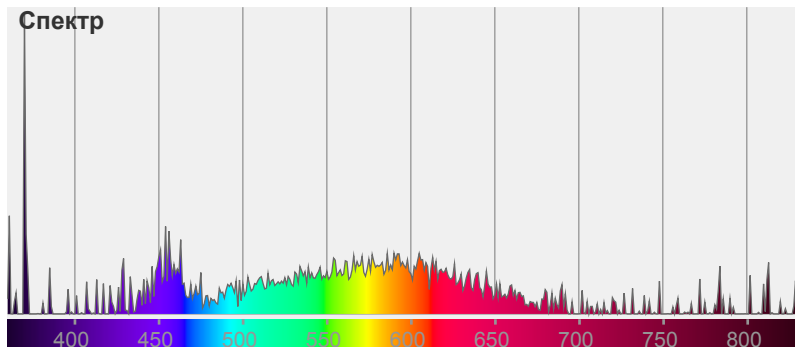


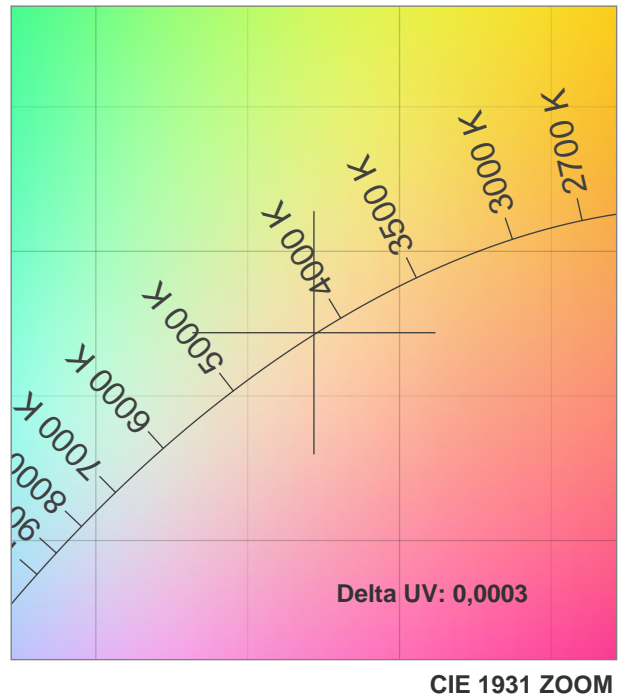
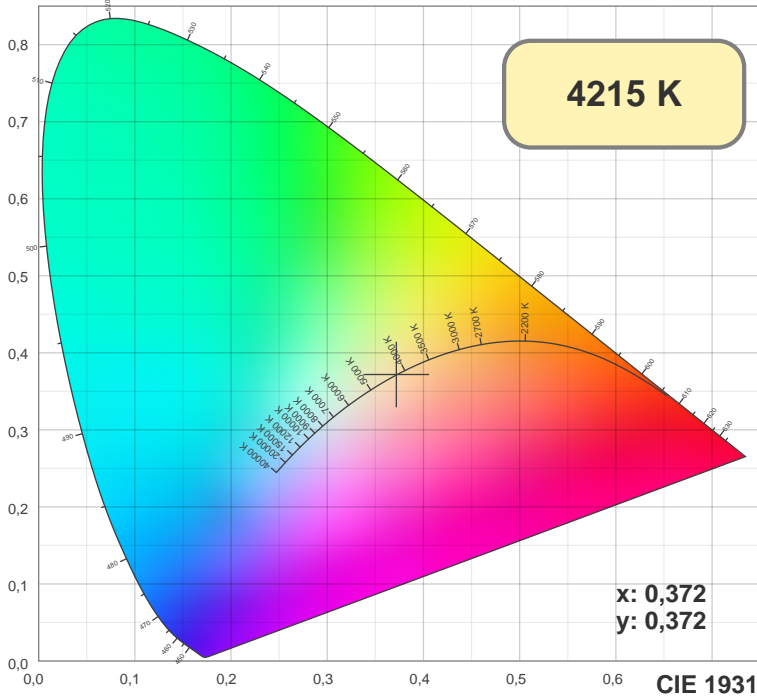
CIE1931

x: 0,372

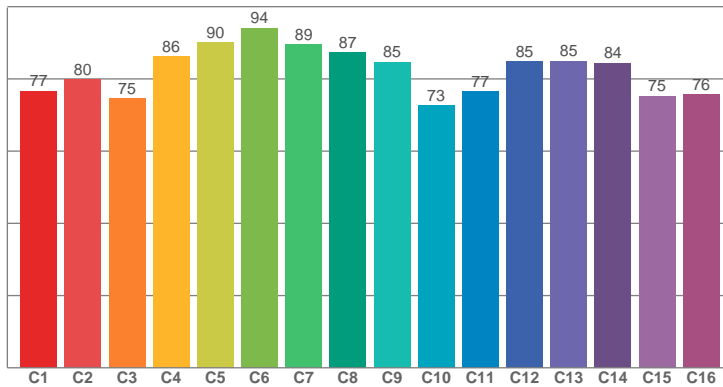
y: 0,372

Спектр

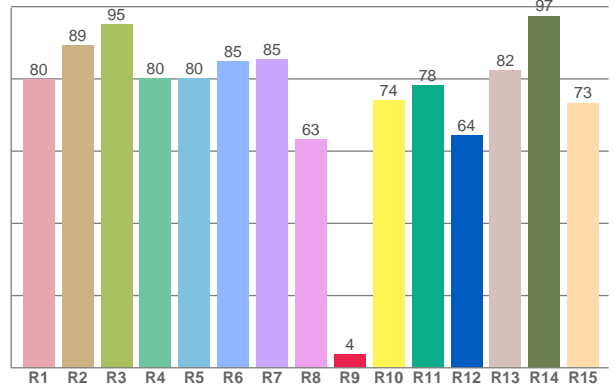




TM30: 82,2



CRI: 82,2 (R1-R8)



CRI R values, only R1-R8 are used to calculate final CRI value

R1	R2	R3	R4	R5	R6	R7	R8	R9	R10	R11	R12	R13	R14	R15
79,94	89,20	95,00	80,06	80,21	84,88	85,49	63,17	3,64	74,11	78,11	64,36	82,30	97,46	73,36

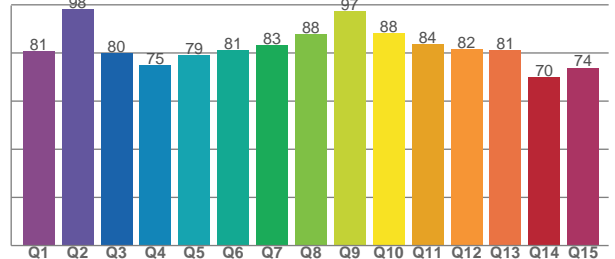
TM30 C values, 16 binned values out of total of 99 C values

C1	C2	C3	C4	C5	C6	C7	C8	C9	C10	C11	C12	C13	C14	C15	C16
76,64	79,90	74,67	86,18	90,06	94,12	89,45	87,37	84,70	72,65	76,62	84,77	85,00	84,42	75,27	75,74

CQS Q values

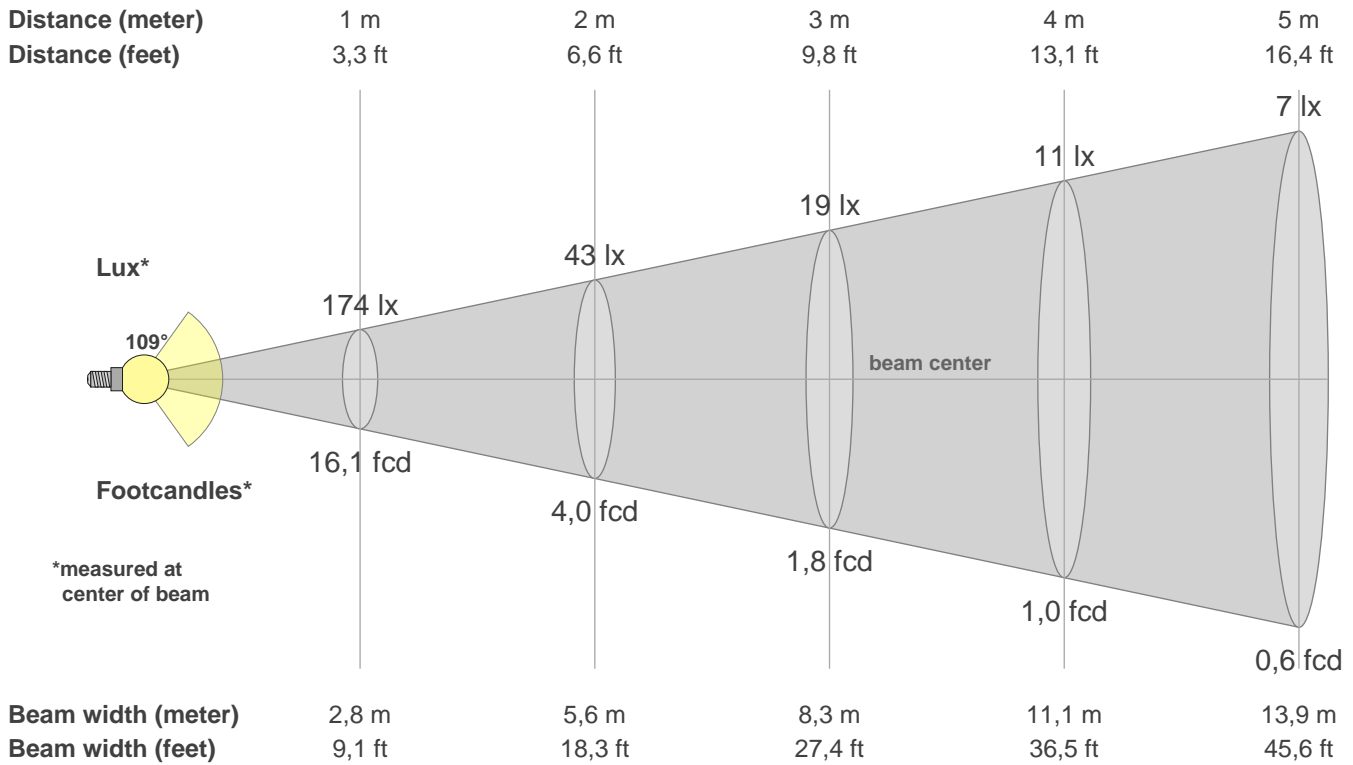
Q1	Q2	Q3	Q4	Q5	Q6	Q7	Q8	Q9	Q10	Q11	Q12	Q13	Q14	Q15
80,85	98,21	79,92	75,07	79,15	81,10	83,38	87,94	97,43	88,31	83,60	81,70	81,11	69,87	73,87

CQS: 81,2



Color parameters

CCT	CRI	CRI R9	TM30 Rf	TM30 Rg	CQS	x	y	u	v	Duv
4215 K	82,2	3,6	82,2	94,2	81,2	0,4	0,4	0,2	0,3	0,0003



Intensities in 0° c-plane

0°	5°	10°	15°	20°	25°	30°	35°	40°	45°	50°	55°	60°	65°	70°	75°	80°	85°	90°	95°
174	173	172	167	161	153	145	134	122	112	101	90	78	64	52	42	33	26	19	15
100%	100%	99%	96%	93%	88%	84%	77%	70%	64%	58%	52%	45%	37%	30%	24%	19%	15%	11%	9%

Intensities in 90° c-plane

0°	5°	10°	15°	20°	25°	30°	35°	40°	45°	50°	55°	60°	65°	70°	75°	80°	85°	90°	95°
174	172	167	162	156	151	142	132	120	107	94	83	71	56	44	32	22	14	8	5
100%	99%	96%	93%	90%	87%	82%	76%	69%	62%	54%	48%	41%	32%	25%	19%	13%	8%	5%	3%

Intensities in 180° c-plane

0°	5°	10°	15°	20°	25°	30°	35°	40°	45°	50°	55°	60°	65°	70°	75°	80°	85°	90°	95°
174	171	166	160	154	146	133	120	108	98	88	75	63	53	45	35	28	21	15	12
100%	98%	96%	92%	89%	84%	77%	69%	62%	57%	50%	43%	36%	31%	26%	20%	16%	12%	9%	7%

Intensities in 270° c-plane

0°	5°	10°	15°	20°	25°	30°	35°	40°	45°	50°	55°	60°	65°	70°	75°	80°	85°	90°	95°
174	172	170	164	159	151	143	134	121	109	98	84	70	58	44	31	19	11	6	5
100%	99%	98%	95%	91%	87%	82%	77%	70%	63%	56%	48%	41%	33%	25%	18%	11%	6%	4%	3%

Beam angle 50%	Field angle 10%	Cutoff angle 2,5%	Intensity ratio in 120° cone	Intensity ratio in 90° cone
108,6°	173,0°	360,0°	70,1%	48,0%