

Эффективность света:

138 Lumen/Watt

Качество света:

CRI: 82,2

Цветовая температура:

4233 K

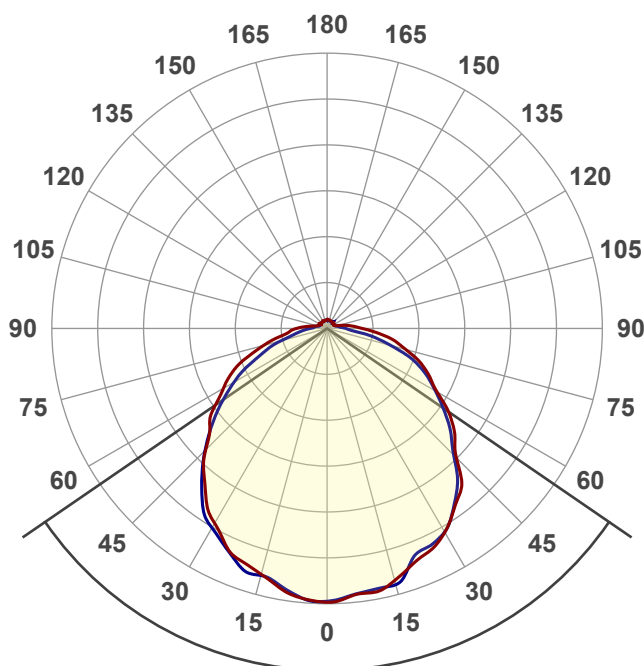
Поток: 529 lm

Интенс.: 167 cd

Мощн.: 3,8 W

КПД: 0,88

4 PLANES



Угол пучка

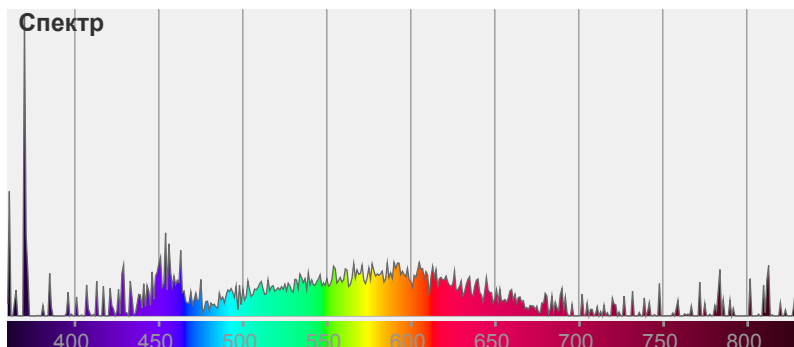
111,1°

Цвет



CIE1931
x: 0,371
y: 0,371

Спектр



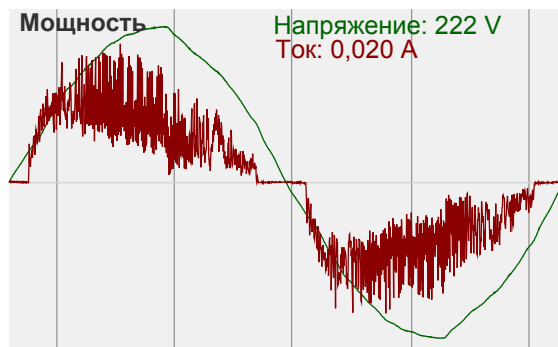
Название продукта:

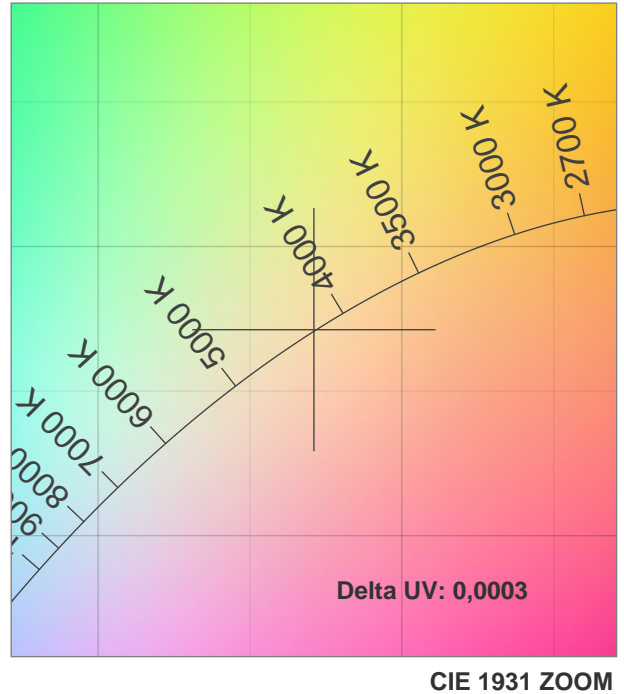
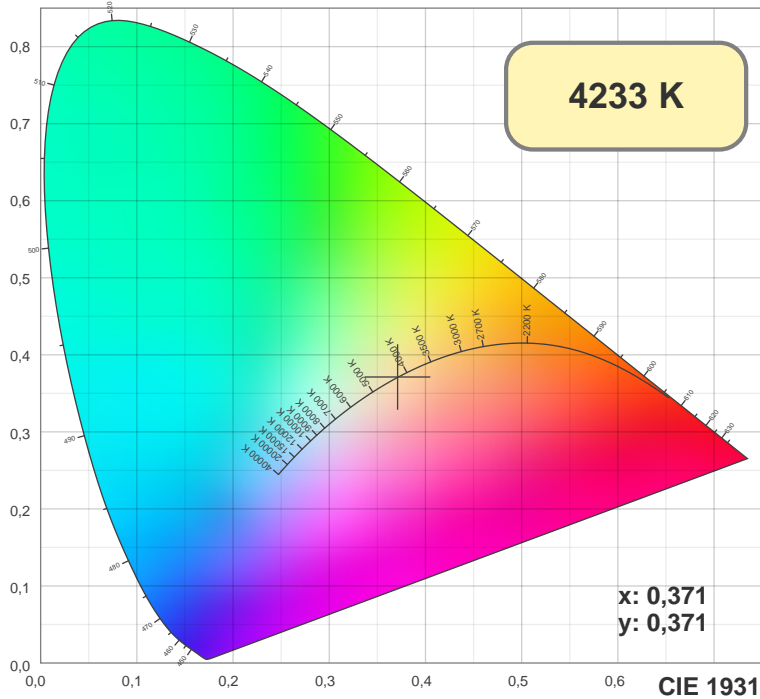
ViLED CC

05-H-C-5-150.150.18-4-0-54

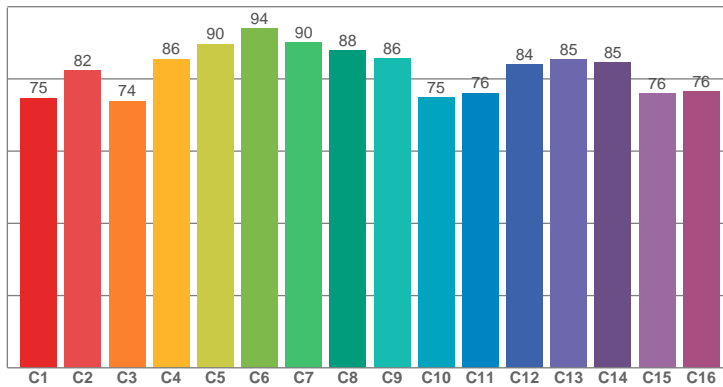
Дата и время:

10.04.2018 10:21:20

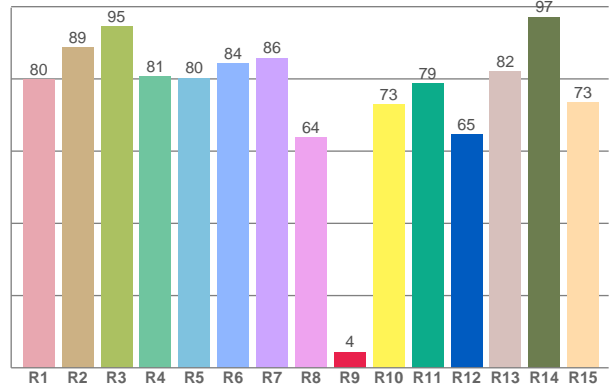




TM30: 82,4



CRI: 82,2 (R1-R8)



CRI R values, only R1-R8 are used to calculate final CRI value

R1	R2	R3	R4	R5	R6	R7	R8	R9	R10	R11	R12	R13	R14	R15
79,89	88,64	94,54	80,60	80,28	84,29	85,84	63,80	4,40	72,99	78,80	64,70	82,00	97,13	73,40

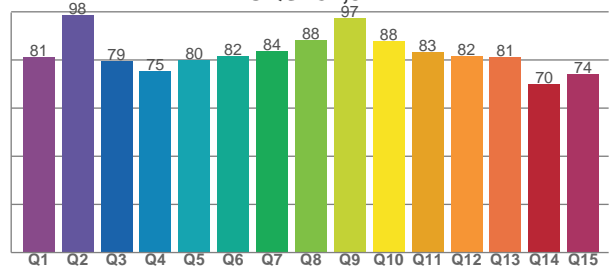
TM30 C values, 16 binned values out of total of 99 C values

C1	C2	C3	C4	C5	C6	C7	C8	C9	C10	C11	C12	C13	C14	C15	C16
74,76	82,26	73,90	85,56	89,67	93,90	90,08	87,89	85,71	74,79	76,08	84,01	85,49	84,59	75,93	76,43

CQS Q values

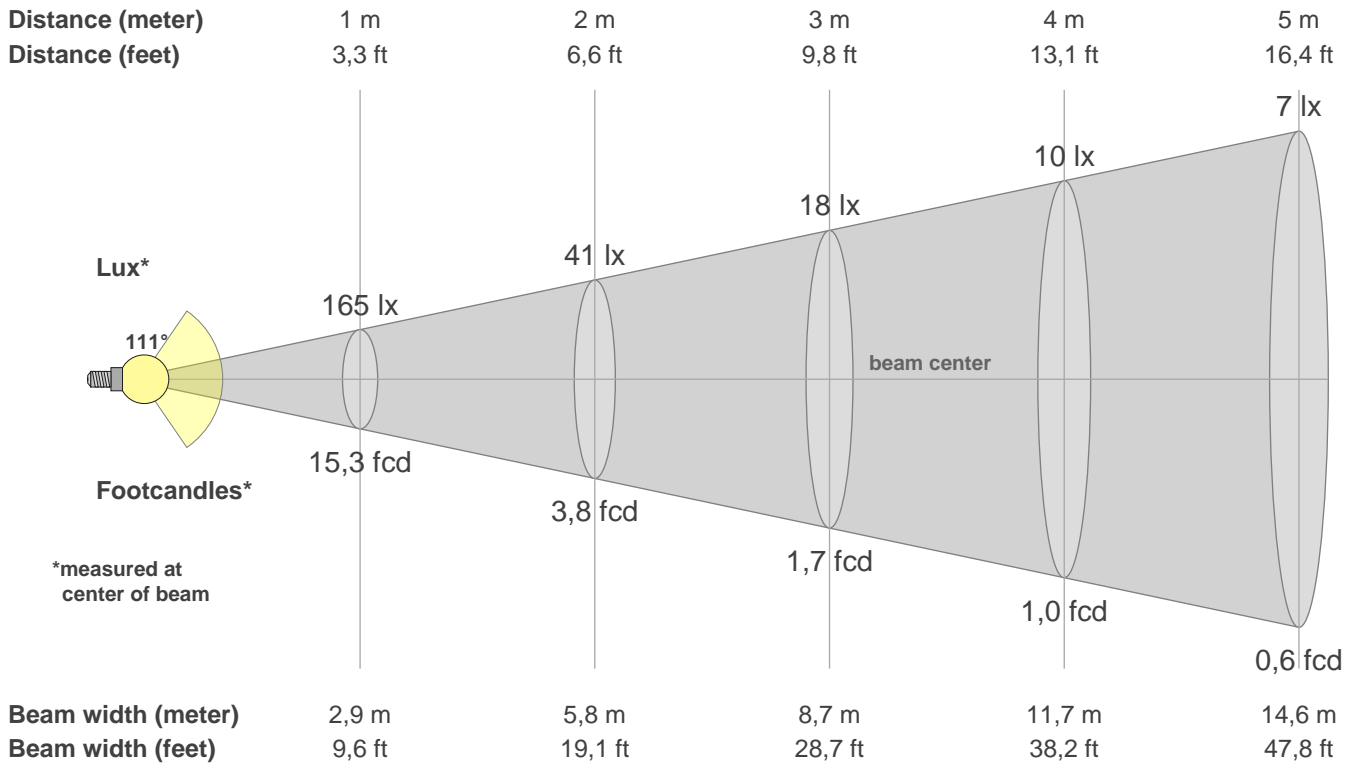
Q1	Q2	Q3	Q4	Q5	Q6	Q7	Q8	Q9	Q10	Q11	Q12	Q13	Q14	Q15
81,26	98,46	79,50	75,44	79,77	81,66	83,65	88,08	97,40	87,74	83,28	81,54	81,11	70,05	74,07

CQS: 81,3



Color parameters

CCT	CRI	CRI R9	TM30 Rf	TM30 Rg	CQS	x	y	u	v	Duv
4233 K	82,2	4,4	82,4	94,7	81,3	0,4	0,4	0,2	0,3	0,0003



Intensities in 0° c-plane

0°	5°	10°	15°	20°	25°	30°	35°	40°	45°	50°	55°	60°	65°	70°	75°	80°	85°	90°	95°
165	163	162	158	152	148	143	134	126	111	101	90	77	68	60	50	41	31	21	16
100%	99%	98%	96%	92%	90%	86%	81%	76%	67%	61%	55%	47%	41%	36%	30%	25%	19%	13%	10%

Intensities in 90° c-plane

0°	5°	10°	15°	20°	25°	30°	35°	40°	45°	50°	55°	60°	65°	70°	75°	80°	85°	90°	95°
165	163	161	160	150	146	142	133	123	109	98	87	76	66	55	40	28	16	11	8
100%	98%	97%	97%	91%	88%	86%	81%	74%	66%	59%	52%	46%	40%	33%	24%	17%	9%	7%	5%

Intensities in 180° c-plane

0°	5°	10°	15°	20°	25°	30°	35°	40°	45°	50°	55°	60°	65°	70°	75°	80°	85°	90°	95°
165	164	160	154	150	145	136	127	116	104	93	84	73	63	52	40	30	23	19	13
100%	99%	97%	94%	91%	88%	83%	77%	70%	63%	56%	51%	44%	38%	32%	24%	18%	14%	11%	8%

Intensities in 270° c-plane

0°	5°	10°	15°	20°	25°	30°	35°	40°	45°	50°	55°	60°	65°	70°	75°	80°	85°	90°	95°
165	164	159	155	153	146	139	131	118	105	91	78	65	52	40	29	20	15	11	8
100%	99%	96%	94%	93%	89%	84%	79%	72%	63%	55%	47%	39%	32%	24%	18%	12%	9%	6%	5%

Beam angle 50%	Field angle 10%	Cutoff angle 2,5%	Intensity ratio in 120° cone	Intensity ratio in 90° cone
111,1°	173,0°	360,0°	69,8%	47,9%