

СЕВЕРО-ЗАПАДНАЯ СВЕТОТЕХНИЧЕСКАЯ ЛАБОРАТОРИЯ

Эффективность света:

121 Lumen/Watt

Качество света:

CRI: 82,8

Цветовая температура:

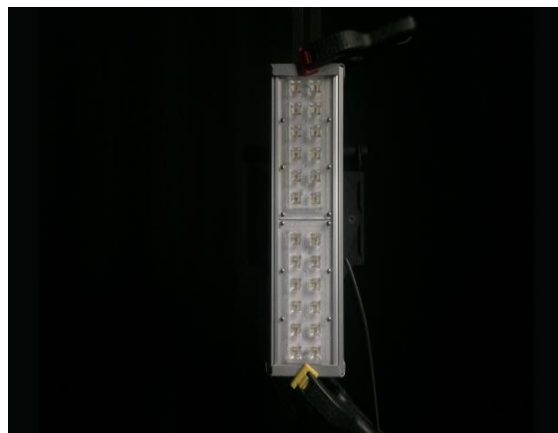
4164 K

Поток: 7812 lm

Интенс.: 5618 cd

Мощн.: 64,8 W

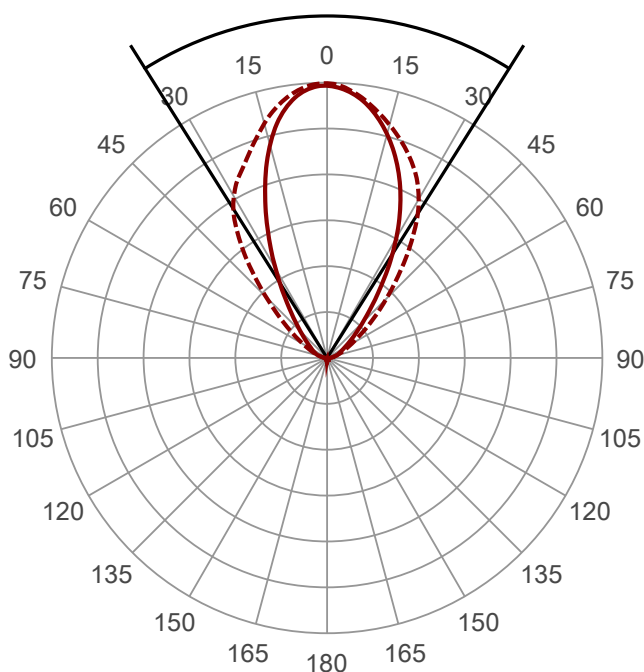
КПД: 0,97



Угол пучка

64,3°

(4 PLANES)
8 C-Planes

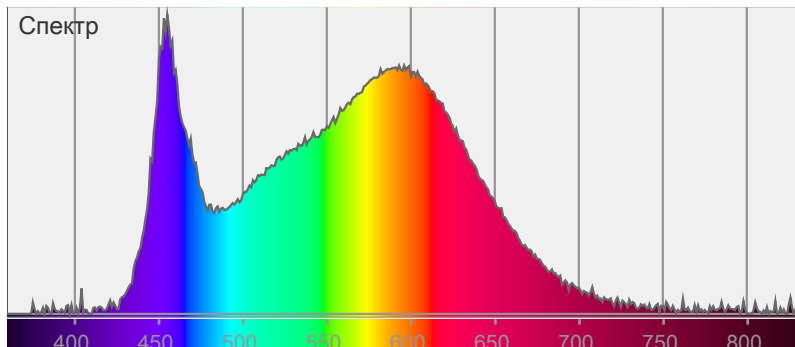


Цвет



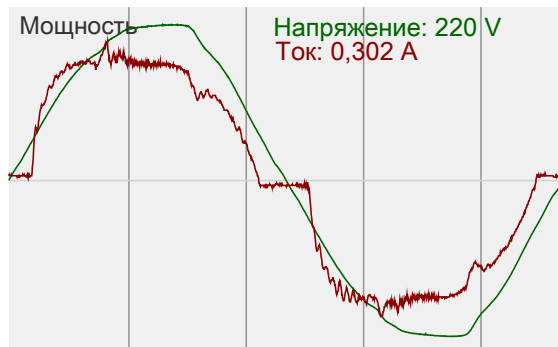
CIE1931
x: 0,373
y: 0,369

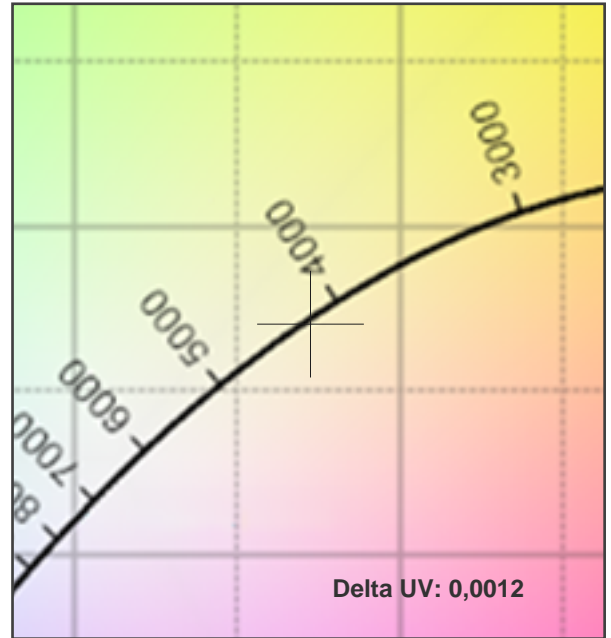
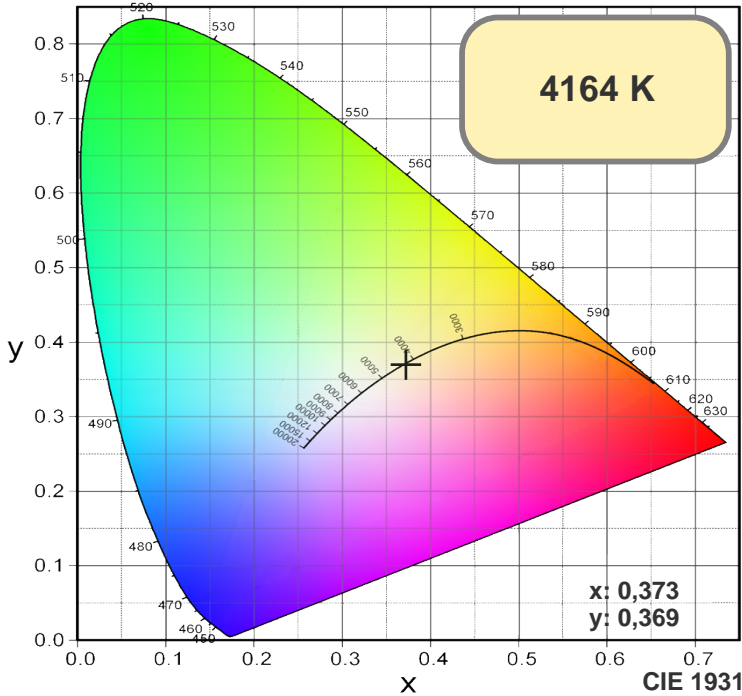
Спектр



Мощность

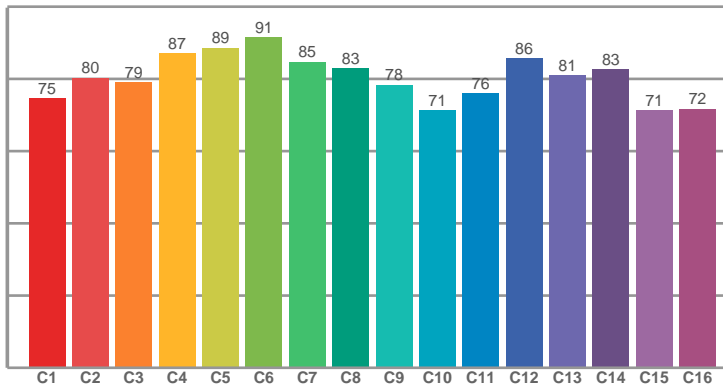
Напряжение: 220 V
Ток: 0,302 A



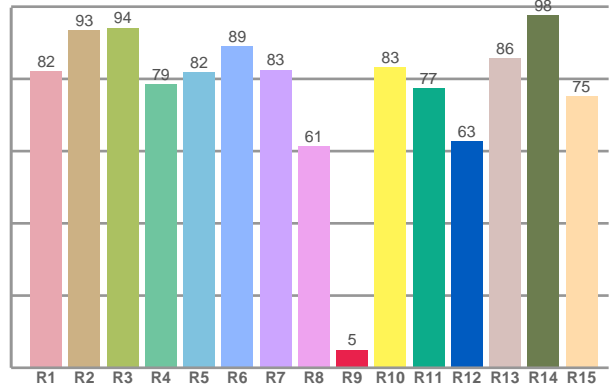


COLOR

TM30: 80,3



CRI: 82,8 (R1-R8)



CRI R values, only R1-R8 are used to calculate final CRI value

R1	R2	R3	R4	R5	R6	R7	R8	R9	R10	R11	R12	R13	R14	R15
82,10	93,37	94,10	78,56	81,78	88,94	82,51	61,33	4,94	83,18	77,36	62,72	85,71	97,50	75,17

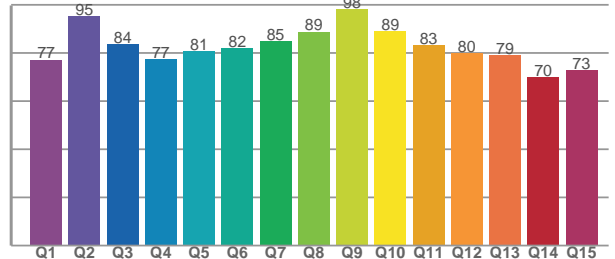
TM30 C values, 16 binned values out of total of 99 C values

C1	C2	C3	C4	C5	C6	C7	C8	C9	C10	C11	C12	C13	C14	C15	C16
74,50	80,30	78,96	87,13	88,61	91,39	84,72	82,92	78,32	71,17	76,07	85,67	80,91	82,67	71,35	71,67

CQS Q values

Q1	Q2	Q3	Q4	Q5	Q6	Q7	Q8	Q9	Q10	Q11	Q12	Q13	Q14	Q15
77,19	95,39	83,66	77,42	80,69	82,07	84,79	88,83	98,07	88,94	83,22	80,01	79,00	69,82	73,02

CQS: 81,3



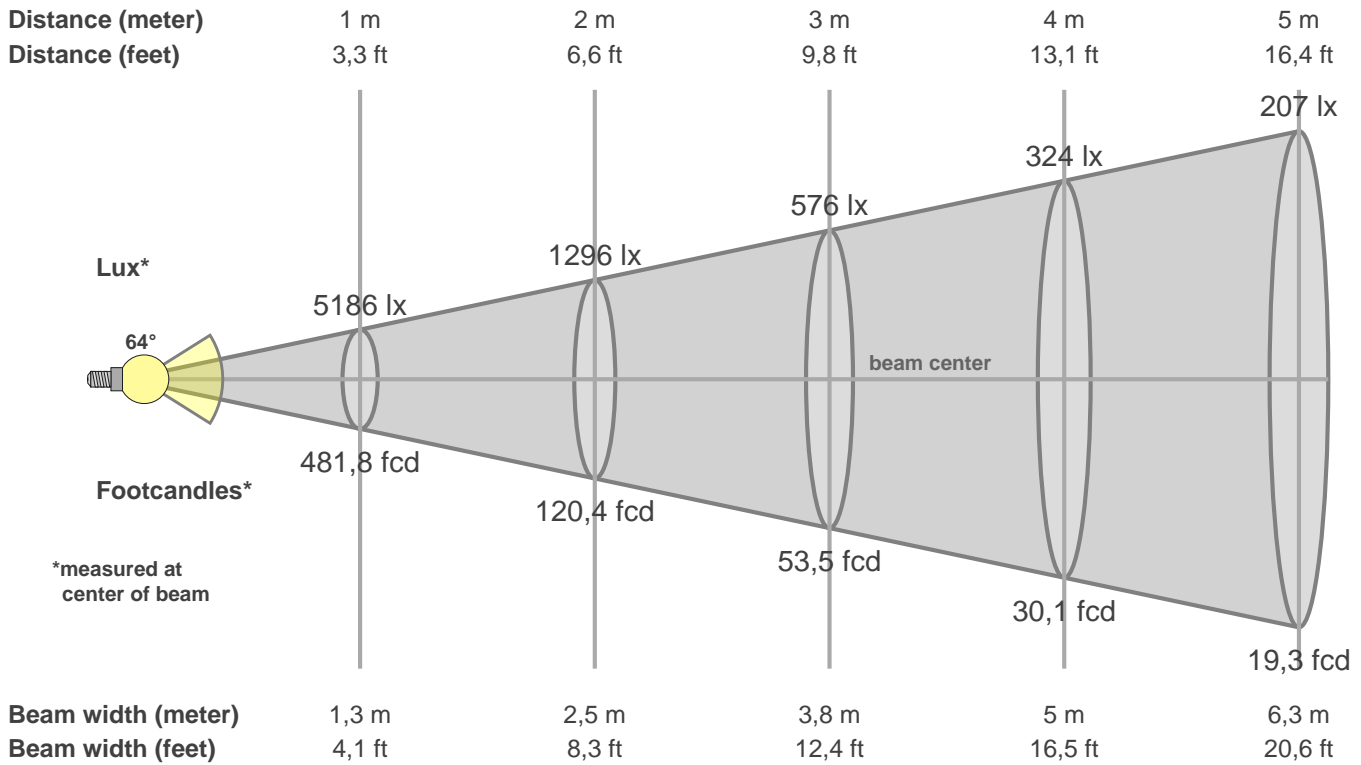
Color parameters

CCT	CRI	CRI R9	TM30 Rf	TM30 Rg	CQS	x	y	u	v	Duv
4164 K	82,8	4,9	80,3	92,0	81,3	0,4	0,4	0,2	0,3	0,0012

СЕВЕРО-ЗАПАДНАЯ СВЕТОТЕХНИЧЕСКАЯ ЛАБОРАТОРИЯ

Beam details

3 of 3



Intensities in 0° c-plane

0°	5°	10°	15°	20°	25°	30°	35°	40°	45°	50°	55°	60°	65°	70°	75°	80°	85°	90°	95°
5186	5093	4765	4200	3466	2694	1991	1421	1010	734	552	425	340	278	224	167	106	64	49	43
100%	98%	92%	81%	67%	52%	38%	27%	19%	14%	11%	8%	7%	5%	4%	3%	2%	1%	1%	1%

Intensities in 90° c-plane

0°	5°	10°	15°	20°	25°	30°	35°	40°	45°	50°	55°	60°	65°	70°	75°	80°	85°	90°	95°
5186	5125	4918	4595	4220	3875	3515	2987	2307	1657	1148	784	531	364	246	156	93	49	19	18
100%	99%	95%	89%	81%	75%	68%	58%	44%	32%	22%	15%	10%	7%	5%	3%	2%	1%	0%	0%

Intensities in 180° c-plane

0°	5°	10°	15°	20°	25°	30°	35°	40°	45°	50°	55°	60°	65°	70°	75°	80°	85°	90°	95°
5186	5083	4822	4421	3914	3315	2650	1980	1404	986	702	511	378	292	235	187	130	78	51	45
100%	98%	93%	85%	75%	64%	51%	38%	27%	19%	14%	10%	7%	6%	5%	4%	3%	2%	1%	1%

Intensities in 270° c-plane

0°	5°	10°	15°	20°	25°	30°	35°	40°	45°	50°	55°	60°	65°	70°	75°	80°	85°	90°	95°
5186	5078	4850	4572	4266	3912	3455	2850	2189	1607	1145	794	548	384	271	184	118	66	32	23
100%	98%	94%	88%	82%	75%	67%	55%	42%	31%	22%	15%	11%	7%	5%	4%	2%	1%	1%	0%

Beam angle 50%	Field angle 10%	Cutoff angle 2,5%	Intensity ratio in 120° cone	Intensity ratio in 90° cone
64,3°	120,8°	161,1°	87,3%	72,3%