

# СЕВЕРО-ЗАПАДНАЯ СВЕТОТЕХНИЧЕСКАЯ ЛАБОРАТОРИЯ

Эффективность света:

**125 Lumen/Watt**

Качество света:

**CRI: 82,6**

Цветовая температура:

**4230 K**

Поток: 7654 lm

Интенс.: 5603 cd

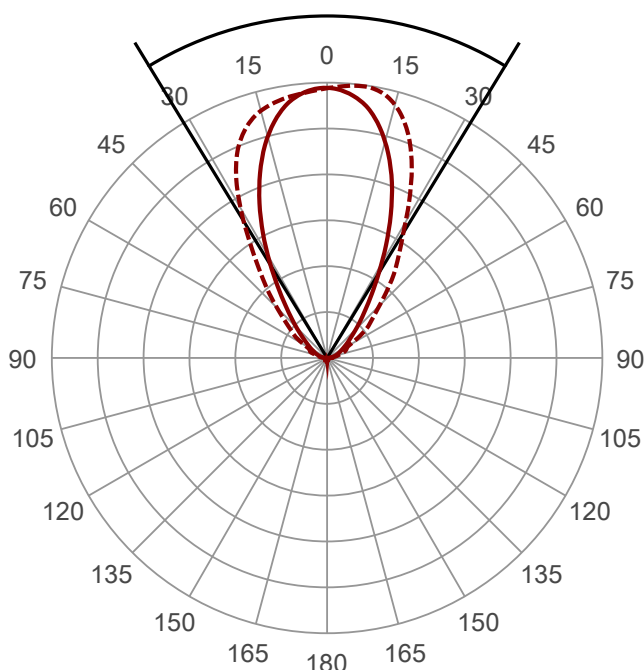
Мощн.: 61,1 W

КПД: 0,94



Угол пучка

**62,7°** (3 C-PLANES)



Название продукта:

СС

МЗ-У-Н-64-250.200.150-4-0-67

Дата и время:

14.05.2016 14:45:22

Цвет

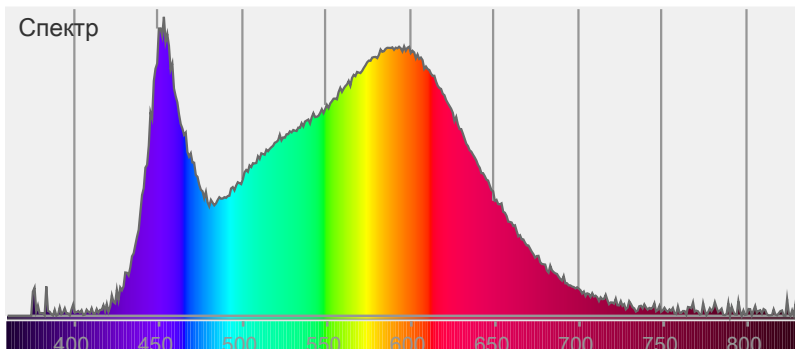


CIE1931

x: 0,371

y: 0,372

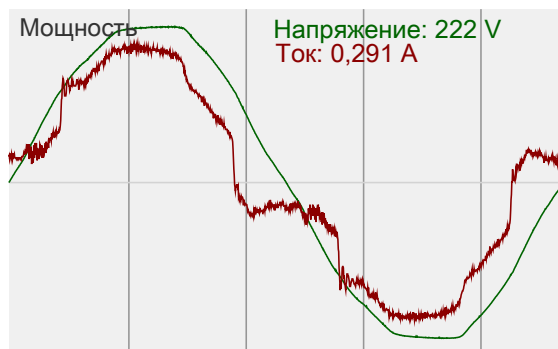
Спектр



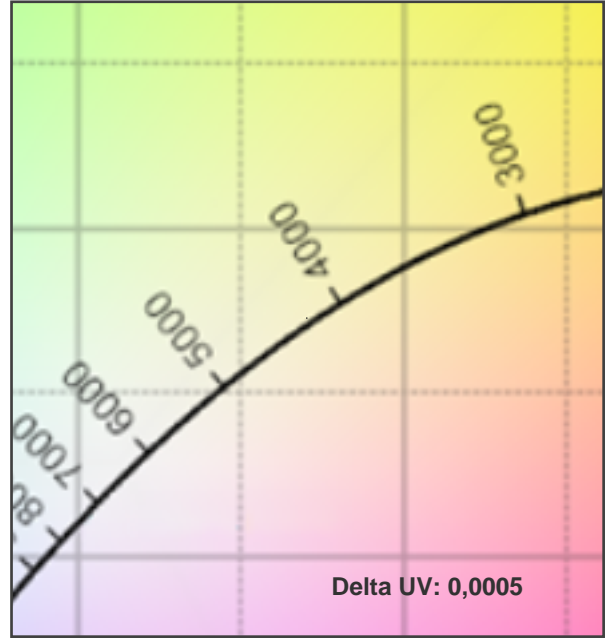
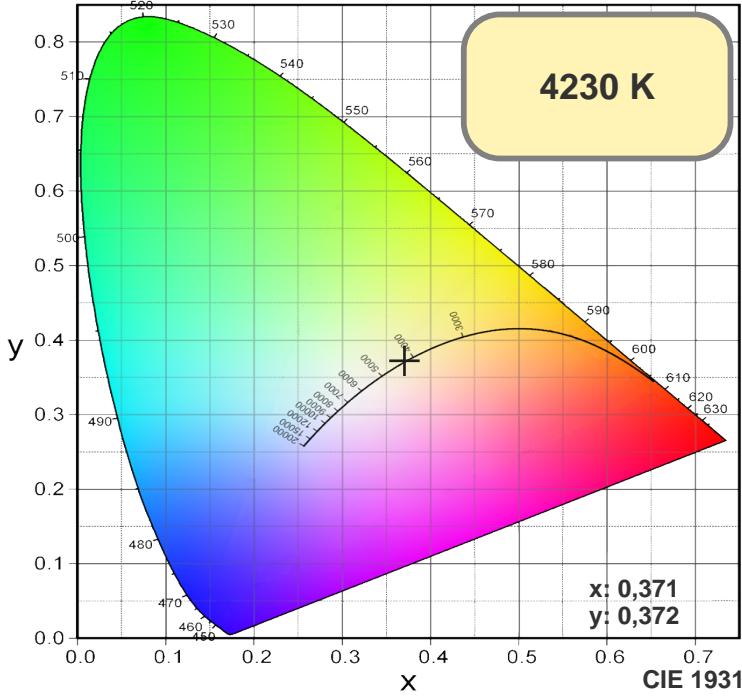
Мощность

Напряжение: 222 V

Ток: 0,291 A

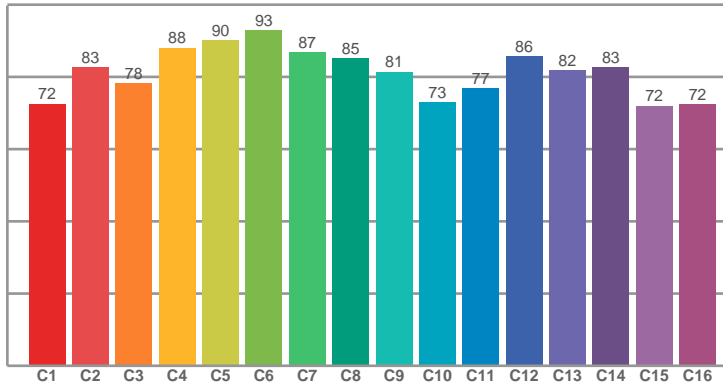


# СЕВЕРО-ЗАПАДНАЯ СВЕТОТЕХНИЧЕСКАЯ ЛАБОРАТОРИЯ

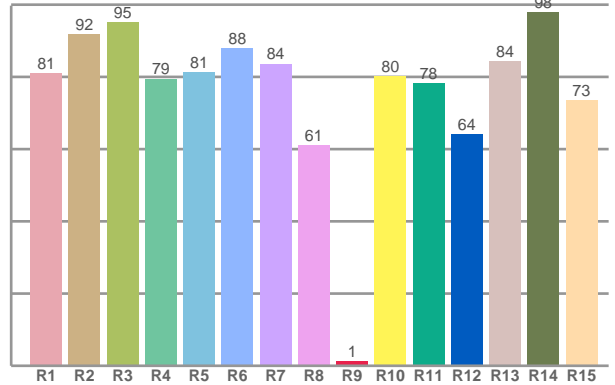


COLOR

TM30: 81,4



CRI: 82,6 (R1-R8)



CRI R values, only R1-R8 are used to calculate final CRI value

R1	R2	R3	R4	R5	R6	R7	R8	R9	R10	R11	R12	R13	R14	R15
81,01	91,75	95,15	79,41	81,20	87,80	83,63	61,10	1,14	80,04	78,29	64,06	84,23	97,88	73,46

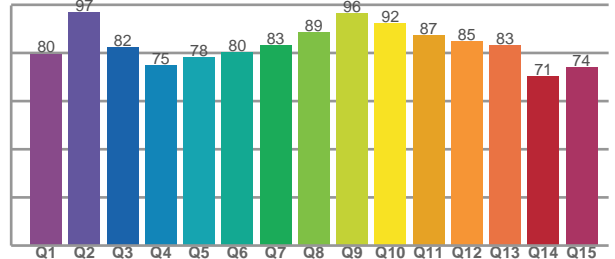
TM30 C values, 16 binned values out of total of 99 C values

C1	C2	C3	C4	C5	C6	C7	C8	C9	C10	C11	C12	C13	C14	C15	C16
72,48	82,54	78,19	88,00	90,08	92,92	86,84	85,10	81,41	72,94	76,89	85,77	81,81	82,71	71,93	72,31

CQS Q values

Q1	Q2	Q3	Q4	Q5	Q6	Q7	Q8	Q9	Q10	Q11	Q12	Q13	Q14	Q15
79,69	96,80	82,26	75,07	78,42	80,28	83,40	88,56	96,46	92,45	87,38	84,84	83,28	70,51	74,12

CQS: 81,9



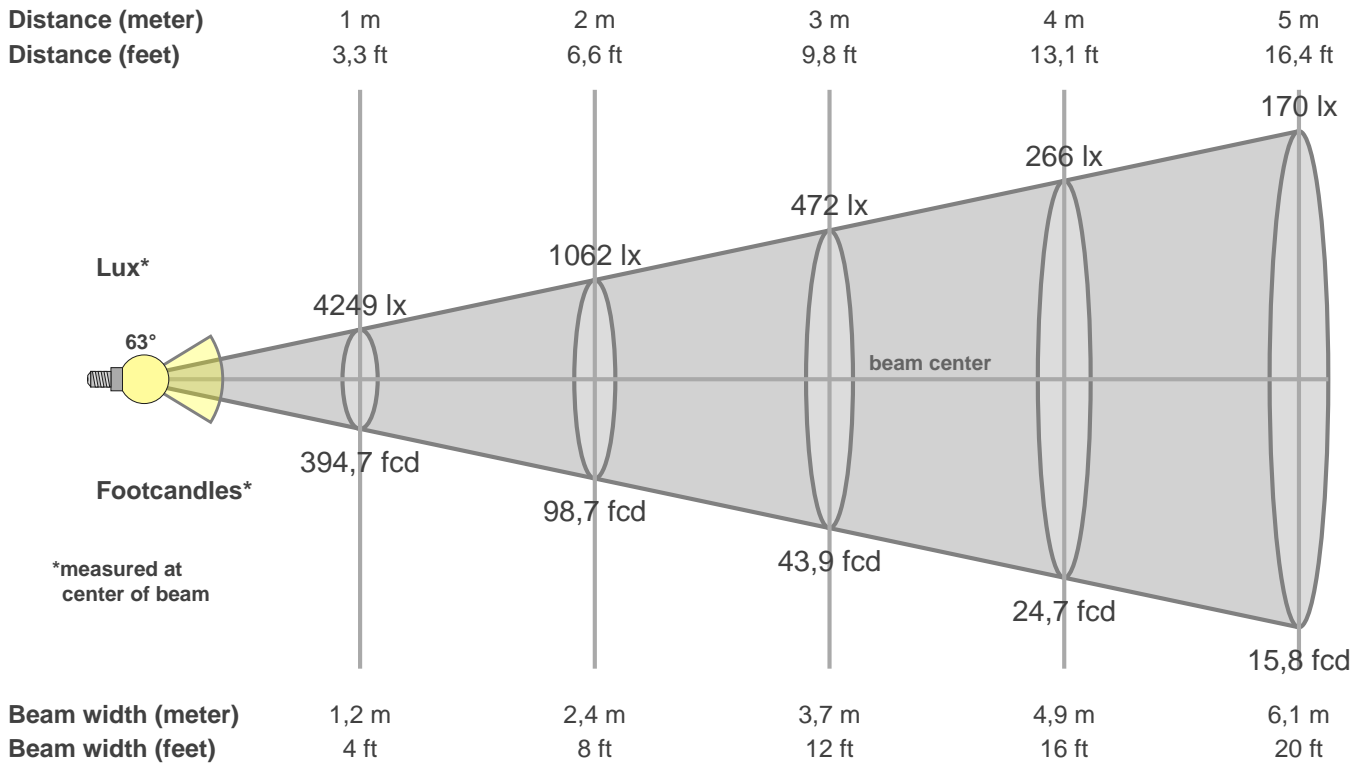
## Color parameters

CCT	CRI	CRI R9	TM30 Rf	TM30 Rg	CQS	x	y	u	v	Duv
4230 K	82,6	1,1	81,4	92,6	81,9	0,4	0,4	0,2	0,3	0,0005

# СЕВЕРО-ЗАПАДНАЯ СВЕТОТЕХНИЧЕСКАЯ ЛАБОРАТОРИЯ

## Beam details

3 of 3



### Intensities in 0° c-plane

0°	5°	10°	15°	20°	25°	30°	35°	40°	45°	50°	55°	60°	65°	70°	75°	80°	85°	90°	95°
4249	4197	3984	3605	3092	2488	1874	1339	956	690	502	378	293	225	178	133	91	50	27	19
100%	99%	94%	85%	73%	59%	44%	32%	22%	16%	12%	9%	7%	5%	4%	3%	2%	1%	1%	0%

### Intensities in 60° c-plane

0°	5°	10°	15°	20°	25°	30°	35°	40°	45°	50°	55°	60°	65°	70°	75°	80°	85°	90°	95°
4249	4190	4131	4025	3806	3374	2726	2041	1530	1118	824	636	421	305	275	189	132	80	37	19
100%	99%	97%	95%	90%	79%	64%	48%	36%	26%	19%	15%	10%	7%	6%	4%	3%	2%	1%	0%

### Intensities in 180° c-plane

0°	5°	10°	15°	20°	25°	30°	35°	40°	45°	50°	55°	60°	65°	70°	75°	80°	85°	90°	95°
4249	4170	3939	3523	2979	2339	1723	1226	887	649	475	366	280	221	174	126	84	48	26	21
100%	98%	93%	83%	70%	55%	41%	29%	21%	15%	11%	9%	7%	5%	4%	3%	2%	1%	1%	0%

### Intensities in 240° c-plane

0°	5°	10°	15°	20°	25°	30°	35°	40°	45°	50°	55°	60°	65°	70°	75°	80°	85°	90°	95°
4249	4303	4295	4115	3735	3145	2484	1966	1565	1174	908	687	420	338	288	198	137	76	36	21
100%	101%	101%	97%	88%	74%	58%	46%	37%	28%	21%	16%	10%	8%	7%	5%	3%	2%	1%	0%

Beam angle 50%	Field angle 10%	Cutoff angle 2,5%	Intensity ratio in 120° cone	Intensity ratio in 90° cone
62,7°	114,6°	161,3°	88,0%	73,8%