

СЕВЕРО-ЗАПАДНАЯ СВЕТОТЕХНИЧЕСКАЯ ЛАБОРАТОРИЯ

Эффективность света:

126 Lumen/Watt

Качество света:

CRI: 81,2

Цветовая температура:

4109 K

Поток: 17470 lm

Интенс.: 4593 cd

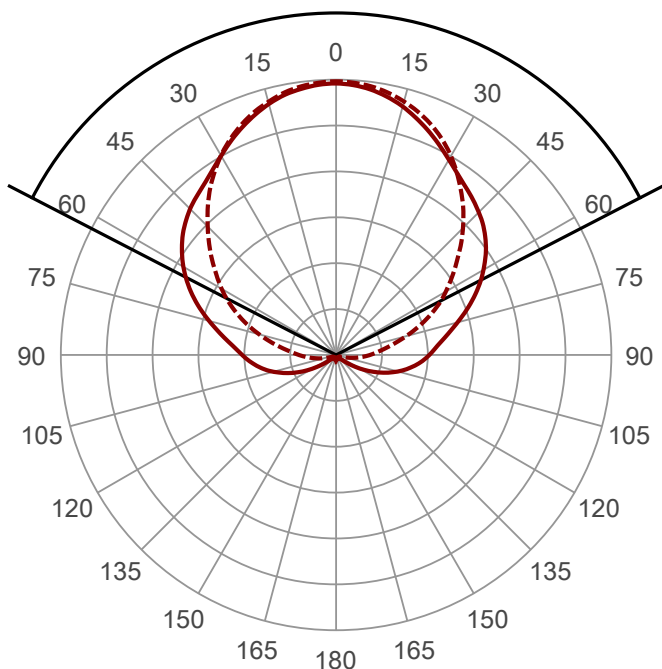
Мощн.: 139 W

КПД: 0,98



Угол пучка

125,3° (3 C-PLANES)



Название продукта:

СС

M1-MK-E-144-250.295.130-4-0-67

Дата и время:

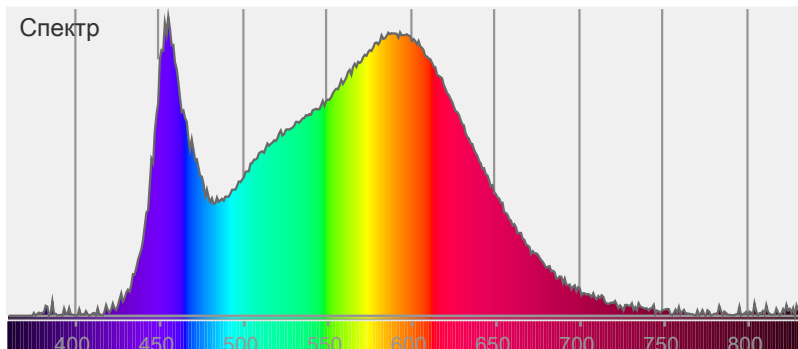
24.03.2016 14:19:43

Цвет



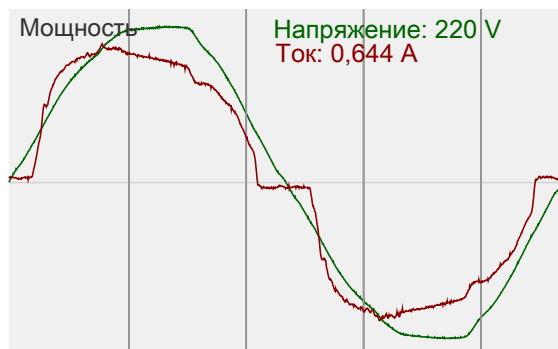
CIE1931
x: 0,378
y: 0,381

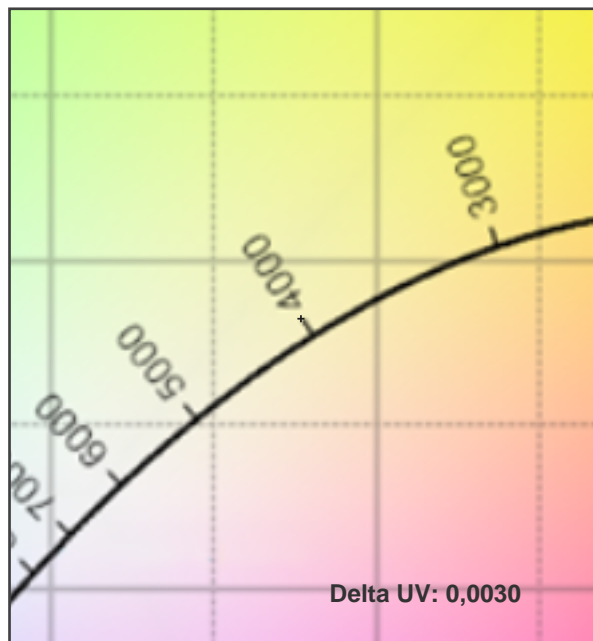
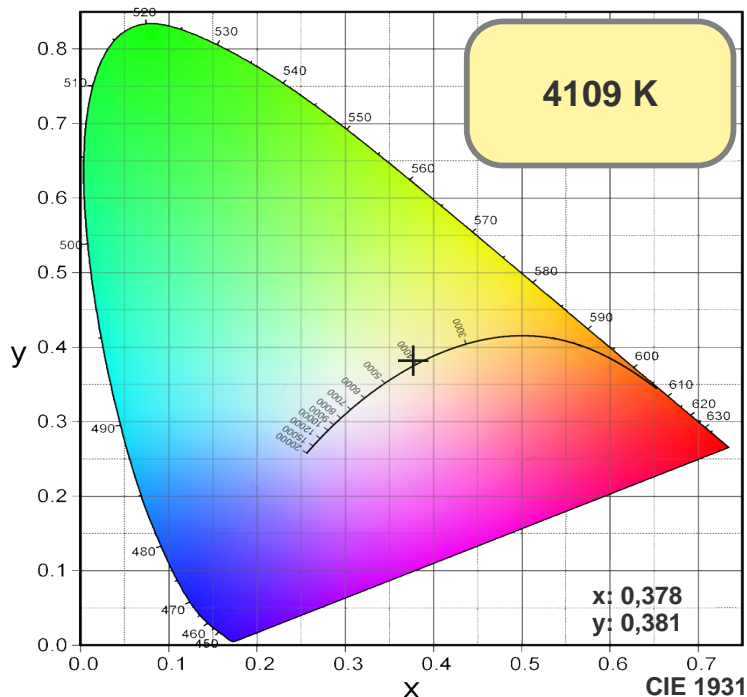
Спектр



Мощность

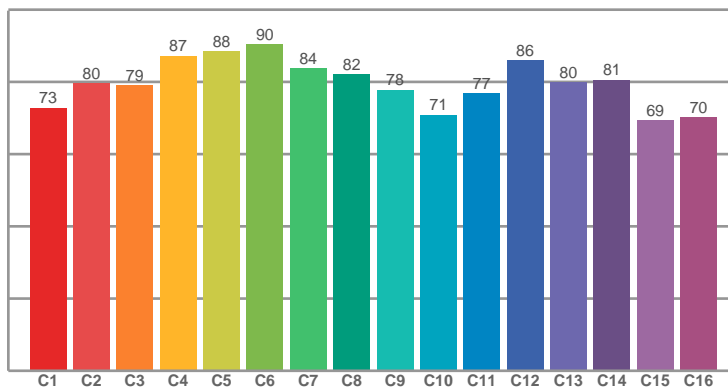
Напряжение: 220 V
Ток: 0,644 A



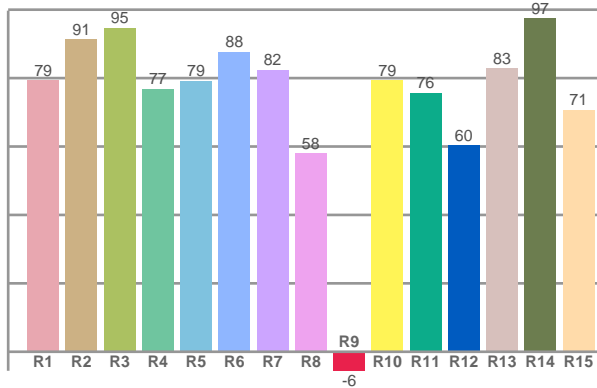


COLOR

TM30: 79,7



CRI: 81,2 (R1-R8)



CRI R values, only R1-R8 are used to calculate final CRI value

R1	R2	R3	R4	R5	R6	R7	R8	R9	R10	R11	R12	R13	R14	R15
79,32	91,34	94,63	76,84	79,19	87,65	82,36	58,01	-5,56	79,35	75,65	60,41	82,90	97,40	70,68

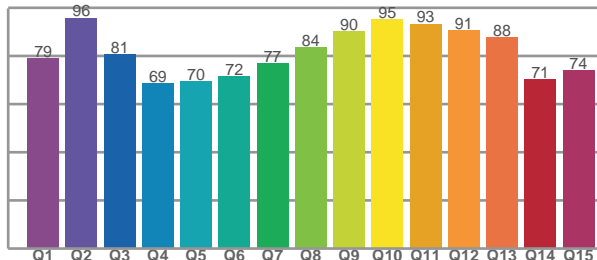
TM30 C values, 16 binned values out of total of 99 C values

C1	C2	C3	C4	C5	C6	C7	C8	C9	C10	C11	C12	C13	C14	C15	C16
72,77	79,63	78,96	87,23	88,42	90,32	83,79	82,08	77,81	70,86	76,81	86,01	79,82	80,58	69,39	70,08

CQS Q values

Q1	Q2	Q3	Q4	Q5	Q6	Q7	Q8	Q9	Q10	Q11	Q12	Q13	Q14	Q15
79,26	95,91	80,74	68,55	69,50	71,66	76,85	83,79	90,15	95,31	93,42	90,79	87,93	70,53	74,02

CQS: 79,5



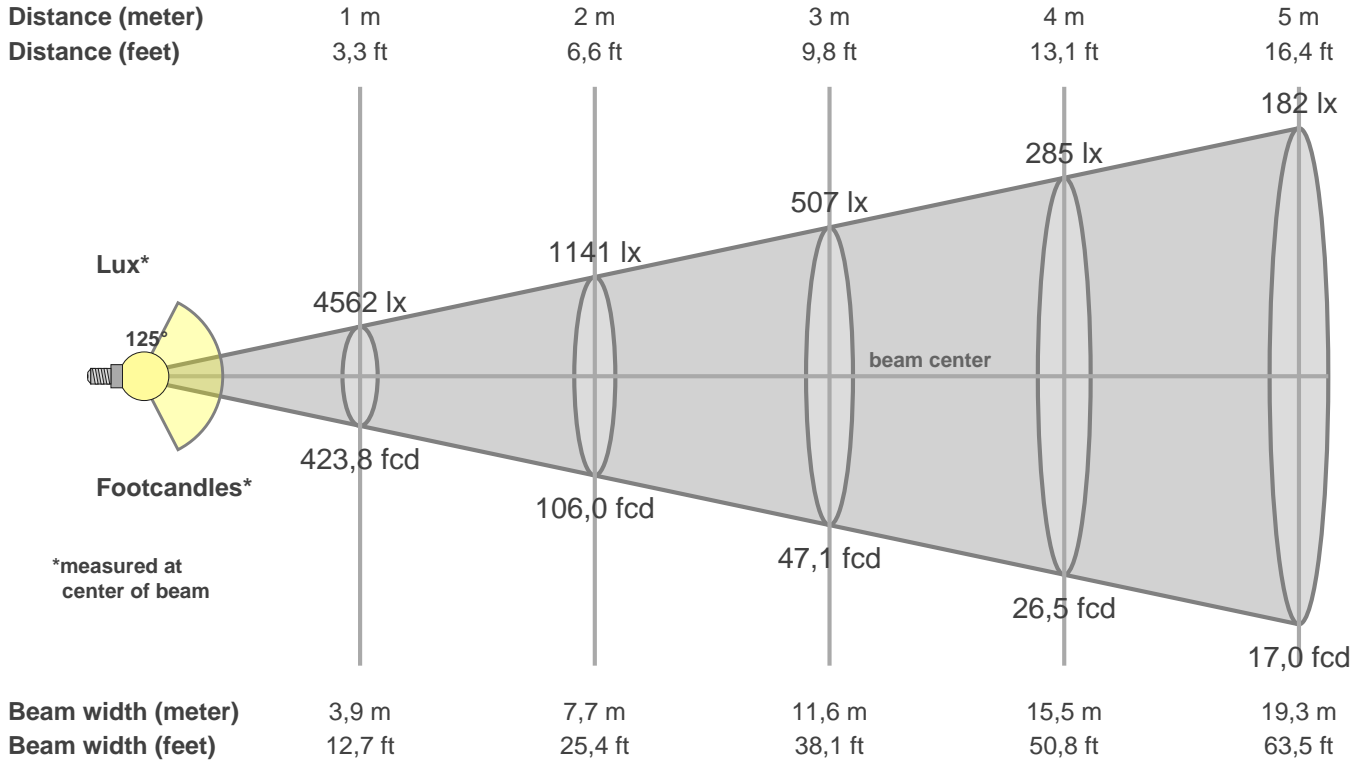
Color parameters

CCT	CRI	CRI R9	TM30 Rf	TM30 Rg	CQS	x	y	u	v	Duv
4109 K	81,2	-5,6	79,7	90,6	79,5	0,4	0,4	0,2	0,3	0,0030

СЕВЕРО-ЗАПАДНАЯ СВЕТОТЕХНИЧЕСКАЯ ЛАБОРАТОРИЯ

Beam details

3 of 3



Intensities in 0° c-plane

0°	9°	18°	27°	36°	45°	54°	63°	72°	81°	90°	99°	108°	117°	126°	135°	144°	153°	162°	171°
4562	4482	4274	3971	3669	3465	3195	2825	2369	1910	1578	1304	968	592	239	76	71	70	74	71
100%	98%	94%	87%	80%	76%	70%	62%	52%	42%	35%	29%	21%	13%	5%	2%	2%	2%	2%	2%

Intensities in 60° c-plane

0°	9°	18°	27°	36°	45°	54°	63°	72°	81°	90°	99°	108°	117°	126°	135°	144°	153°	162°	171°
4562	4522	4321	3997	3563	3049	2540	2055	1521	998	627	354	147	65	59	61	62	66	72	74
100%	99%	95%	88%	78%	67%	56%	45%	33%	22%	14%	8%	3%	1%	1%	1%	1%	1%	2%	2%

Intensities in 180° c-plane

0°	9°	18°	27°	36°	45°	54°	63°	72°	81°	90°	99°	108°	117°	126°	135°	144°	153°	162°	171°
4562	4461	4220	3897	3603	3386	3107	2720	2264	1846	1565	1289	952	574	230	77	73	73	71	75
100%	98%	92%	85%	79%	74%	68%	60%	50%	40%	34%	28%	21%	13%	5%	2%	2%	2%	2%	2%

Intensities in 240° c-plane

0°	9°	18°	27°	36°	45°	54°	63°	72°	81°	90°	99°	108°	117°	126°	135°	144°	153°	162°	171°
4562	4523	4324	3995	3533	3012	2464	1965	1405	896	571	305	118	62	61	63	65	69	74	75
100%	99%	95%	88%	77%	66%	54%	43%	31%	20%	13%	7%	3%	1%	1%	1%	1%	2%	2%	2%

Beam angle 50%	Field angle 10%	Cutoff angle 2,5%	Intensity ratio in 120° cone	Intensity ratio in 90° cone
125,3°	206,0°	233,1°	60,7%	40,1%