

# СЕВЕРО-ЗАПАДНАЯ СВЕТОТЕХНИЧЕСКАЯ ЛАБОРАТОРИЯ

Эффективность света:

**127 Lumen/Watt**

Качество света:

**CRI: 85,8**

Цветовая температура:

**4048 K**

Поток: 22928 lm

Интенс.: 7825 cd

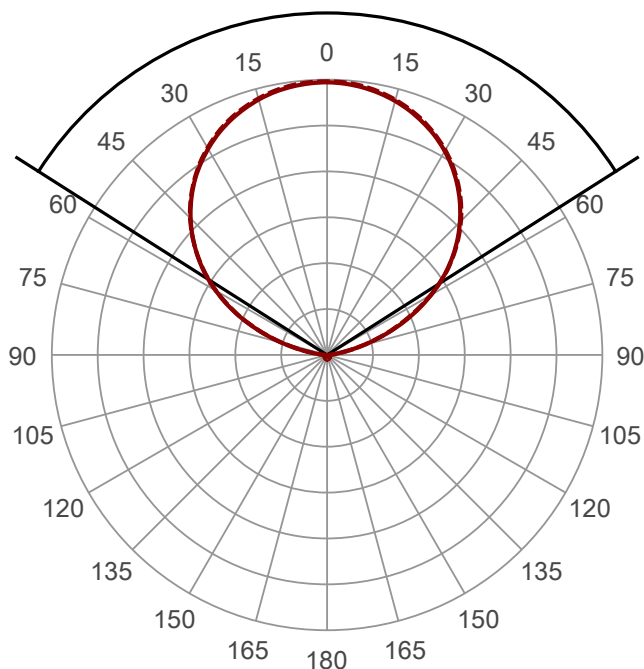
Мощн.: 181 W

КПД: 0,97



Угол пучка

**115,1°** (3 C-PLANES)

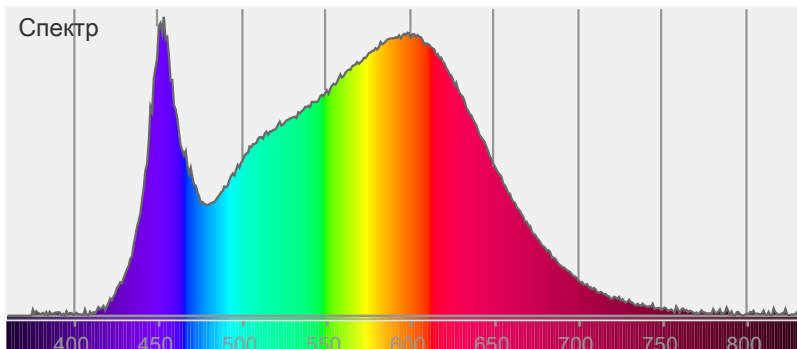


Цвет



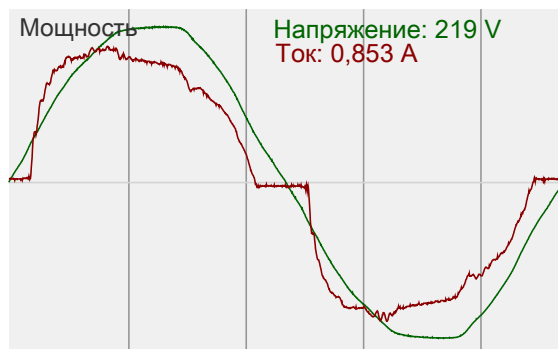
CIE1931  
x: 0,379  
y: 0,379

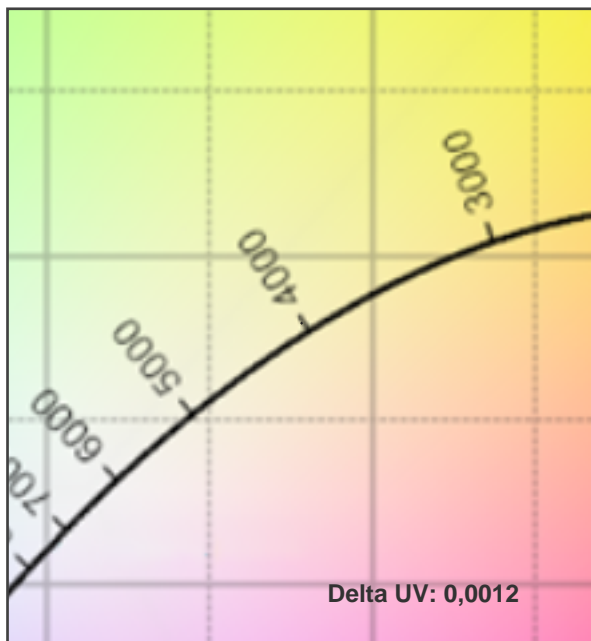
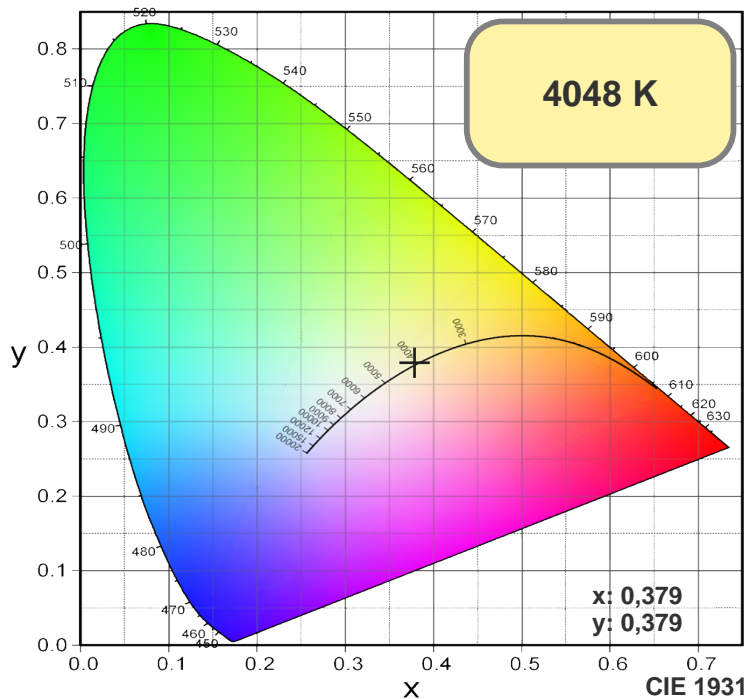
Спектр



Мощность

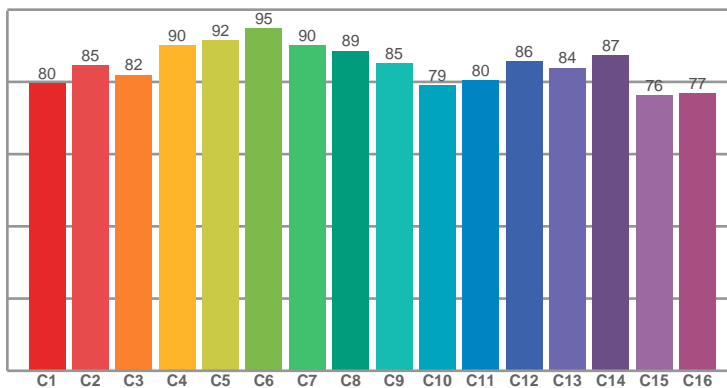
Напряжение: 219 V  
Ток: 0,853 A



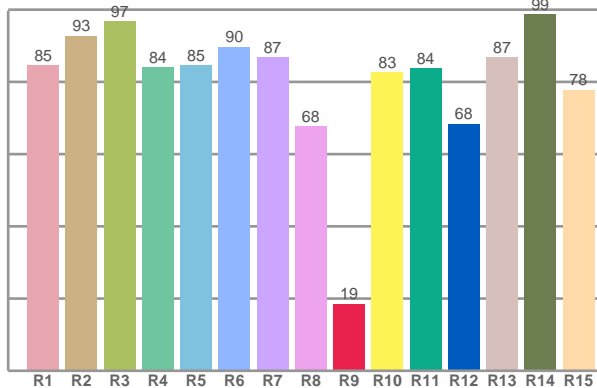


COLOR

TM30: 84,7



CRI: 85,8 (R1-R8)



CRI R values, only R1-R8 are used to calculate final CRI value

R1	R2	R3	R4	R5	R6	R7	R8	R9	R10	R11	R12	R13	R14	R15
84,51	92,71	96,74	84,05	84,59	89,69	86,75	67,64	18,51	82,53	83,71	68,39	86,88	98,71	77,81

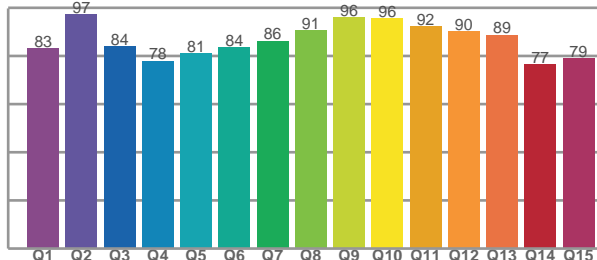
TM30 C values, 16 binned values out of total of 99 C values

C1	C2	C3	C4	C5	C6	C7	C8	C9	C10	C11	C12	C13	C14	C15	C16
79,61	84,53	81,89	90,07	91,53	94,72	90,13	88,57	85,14	78,94	80,40	85,69	83,89	87,43	76,27	76,74

CQS Q values

Q1	Q2	Q3	Q4	Q5	Q6	Q7	Q8	Q9	Q10	Q11	Q12	Q13	Q14	Q15
83,34	97,27	83,94	78,06	81,34	83,58	86,39	90,60	96,20	95,71	92,23	90,38	88,84	76,68	79,17

CQS: 85,4



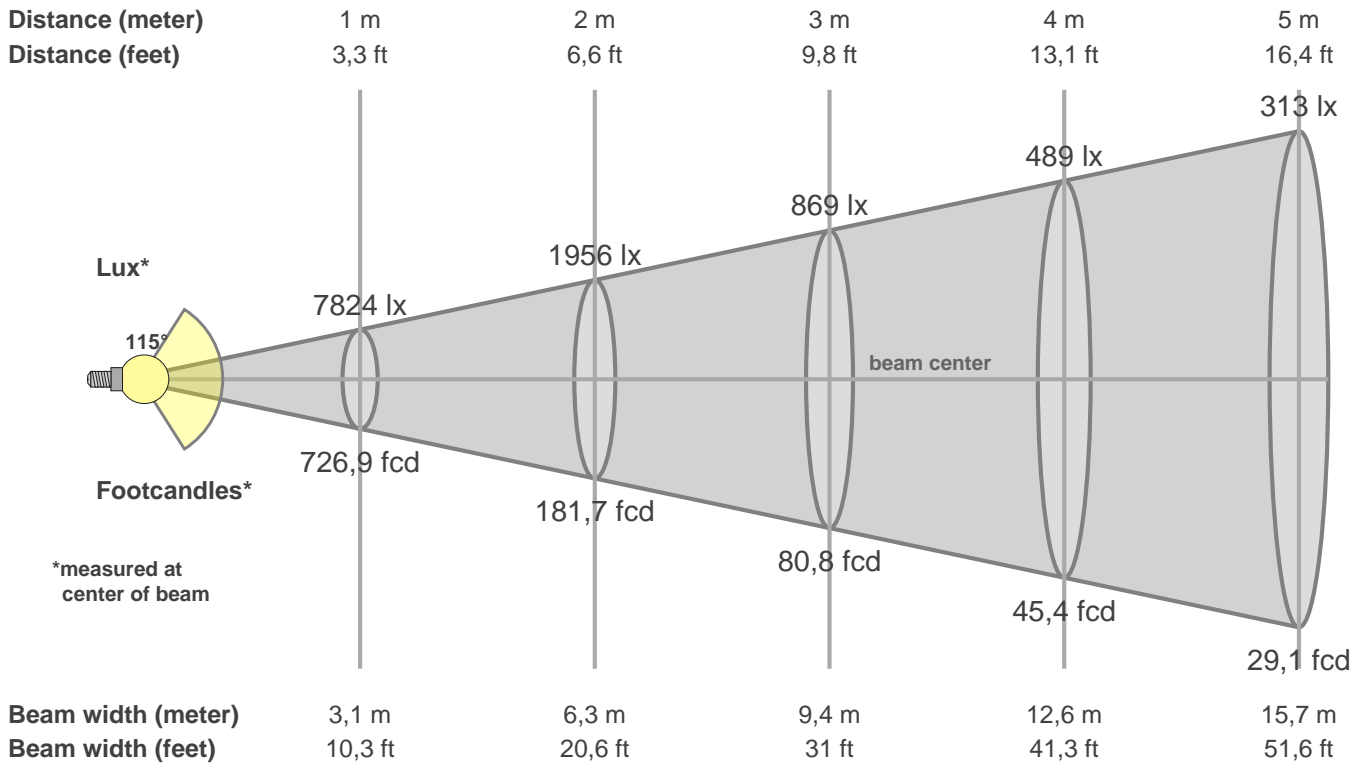
## Color parameters

CCT	CRI	CRI R9	TM30 Rf	TM30 Rg	CQS	x	y	u	v	Duv
4048 K	85,8	18,5	84,7	94,6	85,4	0,4	0,4	0,2	0,3	0,0012

# СЕВЕРО-ЗАПАДНАЯ СВЕТОТЕХНИЧЕСКАЯ ЛАБОРАТОРИЯ

## Beam details

3 of 3



### Intensities in 0° c-plane

0°	5°	10°	15°	20°	25°	30°	35°	40°	45°	50°	55°	60°	65°	70°	75°	80°	85°	90°	95°
7824	7795	7720	7586	7389	7141	6828	6459	6031	5537	4984	4378	3688	2937	2137	1356	671	215	73	63
100%	100%	99%	97%	94%	91%	87%	83%	77%	71%	64%	56%	47%	38%	27%	17%	9%	3%	1%	1%

### Intensities in 60° c-plane

0°	5°	10°	15°	20°	25°	30°	35°	40°	45°	50°	55°	60°	65°	70°	75°	80°	85°	90°	95°
7824	7802	7727	7592	7399	7151	6837	6464	6031	5539	4970	4350	3660	2907	2113	1319	639	193	73	65
100%	100%	99%	97%	95%	91%	87%	83%	77%	71%	64%	56%	47%	37%	27%	17%	8%	2%	1%	1%

### Intensities in 180° c-plane

0°	5°	10°	15°	20°	25°	30°	35°	40°	45°	50°	55°	60°	65°	70°	75°	80°	85°	90°	95°
7824	7784	7690	7544	7334	7074	6752	6359	5905	5388	4811	4171	3447	2668	1857	1089	479	139	81	78
100%	99%	98%	96%	94%	90%	86%	81%	75%	69%	61%	53%	44%	34%	24%	14%	6%	2%	1%	1%

### Intensities in 240° c-plane

0°	5°	10°	15°	20°	25°	30°	35°	40°	45°	50°	55°	60°	65°	70°	75°	80°	85°	90°	95°
7824	7793	7702	7552	7346	7083	6761	6372	5925	5410	4822	4177	3419	2605	1815	1083	479	147	84	79
100%	100%	98%	97%	94%	91%	86%	81%	76%	69%	62%	53%	44%	33%	23%	14%	6%	2%	1%	1%

Beam angle 50%	Field angle 10%	Cutoff angle 2,5%	Intensity ratio in 120° cone	Intensity ratio in 90° cone
115,1°	156,1°	169,2°	79,0%	53,4%