

СЕВЕРО-ЗАПАДНАЯ СВЕТОТЕХНИЧЕСКАЯ ЛАБОРАТОРИЯ

Эффективность света:

104 Lumen/Watt

Качество света:

CRI: 84,7

Цветовая температура:

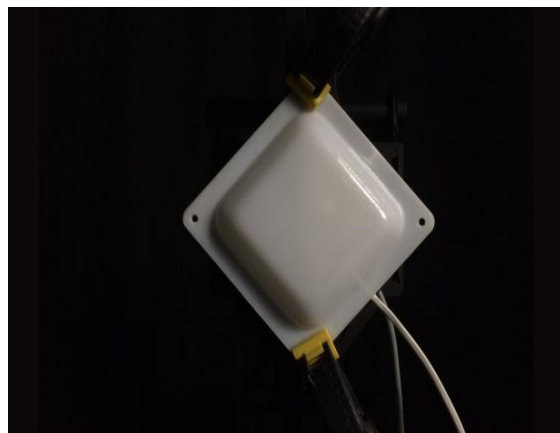
4052 K

Поток: 1150 lm

Интенс.: 329 cd

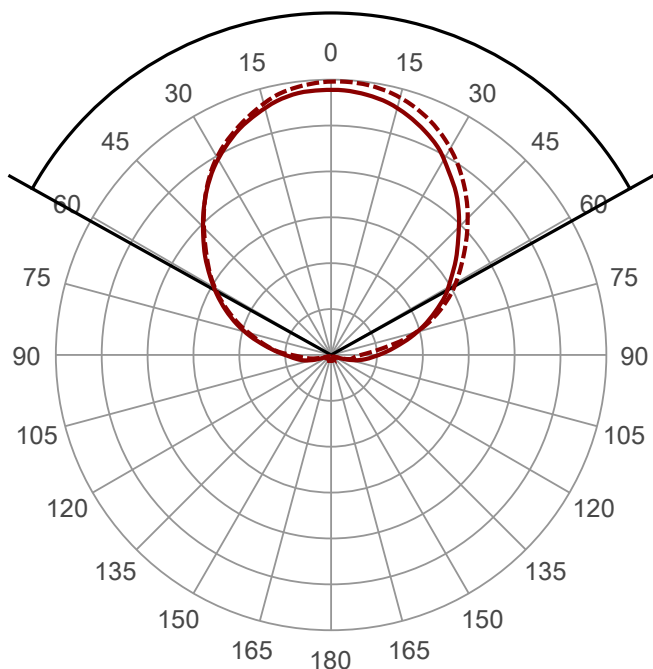
Мощн.: 11,0 W

КПД: 0,90



Угол пучка

121,8° (4 PLANES)
8 C-Planes

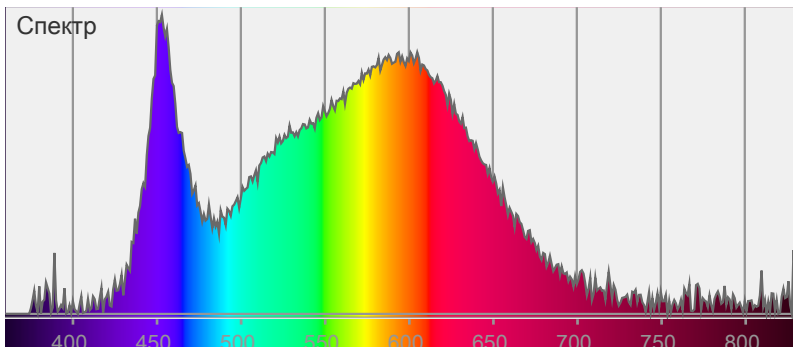


Цвет



CIE1931
x: 0,377
y: 0,370

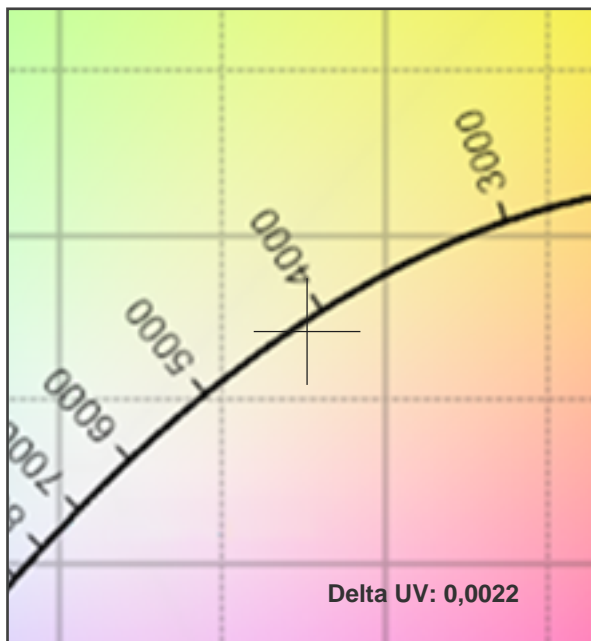
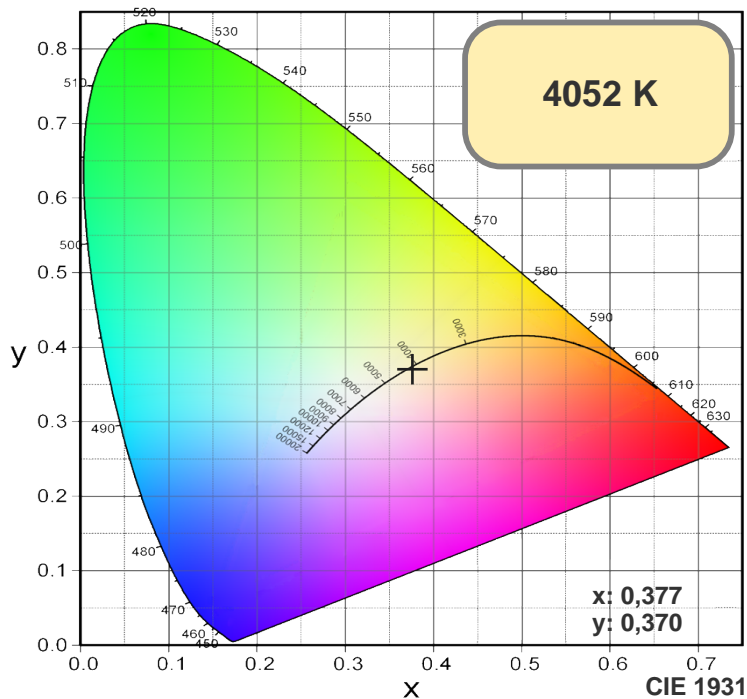
Спектр



Мощность

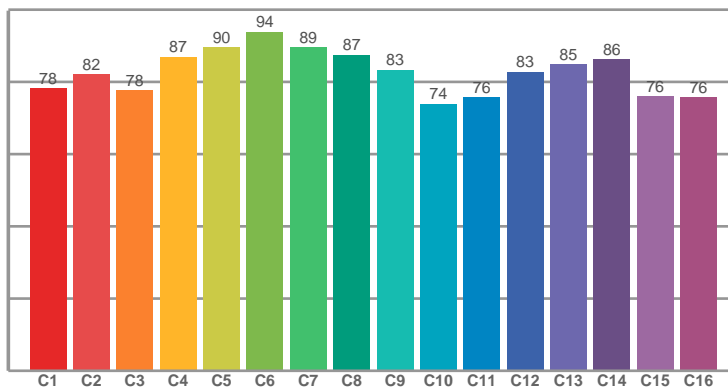
Напряжение: 223 V
Ток: 0,055 A



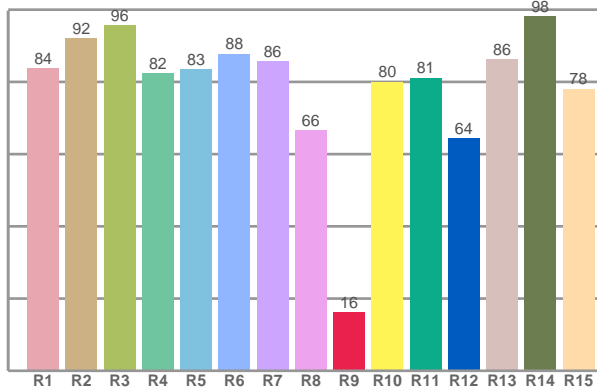


COLOR

TM30: 82,5



CRI: 84,7 (R1-R8)



CRI R values, only R1-R8 are used to calculate final CRI value

R1	R2	R3	R4	R5	R6	R7	R8	R9	R10	R11	R12	R13	R14	R15
83,75	92,08	95,67	82,38	83,41	87,77	85,64	66,50	16,16	80,00	81,12	64,41	86,25	98,16	78,06

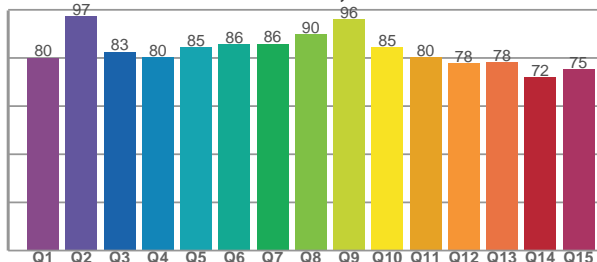
TM30 C values, 16 binned values out of total of 99 C values

C1	C2	C3	C4	C5	C6	C7	C8	C9	C10	C11	C12	C13	C14	C15	C16
78,25	82,04	77,63	86,95	89,62	93,83	89,46	87,50	83,31	73,86	75,72	82,78	84,84	86,24	75,89	75,78

CQS Q values

Q1	Q2	Q3	Q4	Q5	Q6	Q7	Q8	Q9	Q10	Q11	Q12	Q13	Q14	Q15
80,15	97,35	82,66	80,33	84,60	85,65	85,96	89,89	96,19	84,66	80,30	77,89	78,14	72,10	75,27

CQS: 82,1



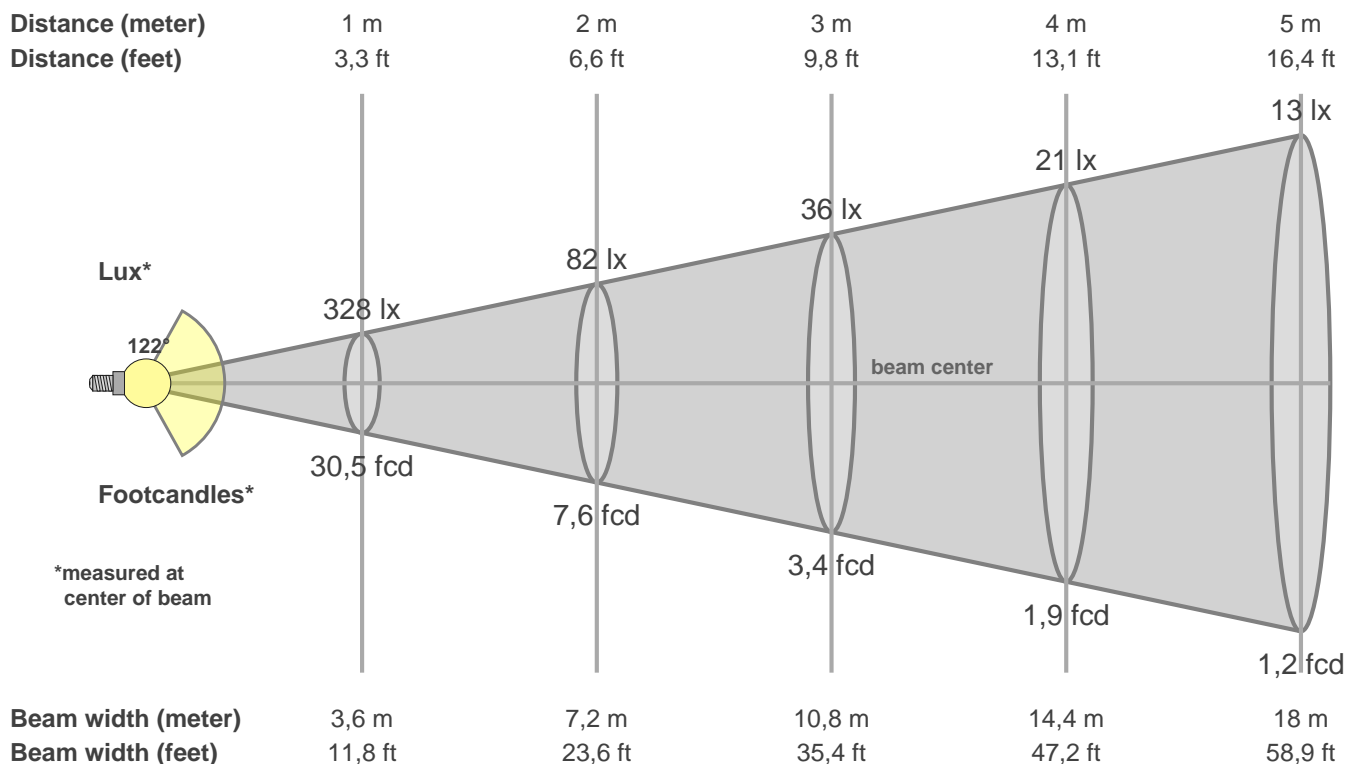
Color parameters

CCT	CRI	CRI R9	TM30 Rf	TM30 Rg	CQS	x	y	u	v	Duv
4052 K	84,7	16,2	82,5	94,9	82,1	0,4	0,4	0,2	0,3	0,0022

СЕВЕРО-ЗАПАДНАЯ СВЕТОТЕХНИЧЕСКАЯ ЛАБОРАТОРИЯ

Beam details

3 of 3



Intensities in 0° c-plane

0°	9°	18°	27°	36°	45°	54°	63°	72°	81°	90°	99°	108°	117°	126°	135°	144°	153°	162°	171°
328	325	311	289	259	224	190	157	122	87	57	39	17	6	5	6	6	6	6	7
100%	99%	95%	88%	79%	68%	58%	48%	37%	26%	18%	12%	5%	2%	1%	2%	2%	2%	2%	2%

Intensities in 90° c-plane

0°	9°	18°	27°	36°	45°	54°	63°	72°	81°	90°	99°	108°	117°	126°	135°	144°	153°	162°	171°
328	322	306	283	253	216	182	150	115	81	49	26	9	6	5	6	6	6	7	6
100%	98%	93%	86%	77%	66%	56%	46%	35%	25%	15%	8%	3%	2%	1%	2%	2%	2%	2%	2%

Intensities in 180° c-plane

0°	9°	18°	27°	36°	45°	54°	63°	72°	81°	90°	99°	108°	117°	126°	135°	144°	153°	162°	171°
328	324	311	290	259	224	189	158	122	88	59	38	16	6	6	6	5	6	6	7
100%	99%	95%	88%	79%	68%	58%	48%	37%	27%	18%	12%	5%	2%	2%	2%	1%	2%	2%	2%

Intensities in 270° c-plane

0°	9°	18°	27°	36°	45°	54°	63°	72°	81°	90°	99°	108°	117°	126°	135°	144°	153°	162°	171°
328	326	315	295	266	232	196	162	122	72	37	26	14	5	5	6	6	5	6	7
100%	99%	96%	90%	81%	71%	60%	49%	37%	22%	11%	8%	4%	2%	2%	2%	2%	2%	2%	2%

Beam angle 50%	Field angle 10%	Cutoff angle 2,5%	Intensity ratio in 120° cone	Intensity ratio in 90° cone
121,8°	194,4°	228,8°	65,0%	43,3%